



BROWN

Department of Public Safety

Professional Standards Bureau

MOTOR VEHICLE & INVESTIGATORY FIELD STOP DATA REPORT THIRD QUARTER JANUARY- SEPTEMBER 2011

The Brown University Department of Public Safety seeks to demonstrate a high level of professional performance, enhance and maintain the professional integrity of the department, and promote a high level of community confidence in its operations.

The Professional Standards Bureau is responsible for implementing policy, procedures, and directives that aid the organization and its members to realize those goals.

Lt. Bruce W. Holt

Commander, Professional Standards Bureau

Introduction

It is the policy of the Brown University Department of Public Safety to patrol in a proactive manner, to investigate suspicious persons and circumstances in a professional impartial and unbiased manner.

In 2006, the Department of Public Safety launched a proactive Field Stop Integrity Initiative to monitor and analyze the level of activity surrounding all field stops conducted by DPS Officers.

In addition, the Department of Public Safety and the Office of Institutional Diversity have worked collaboratively to enhance this initiative.

The Proactive Integrity Initiative encompasses the following key principles:

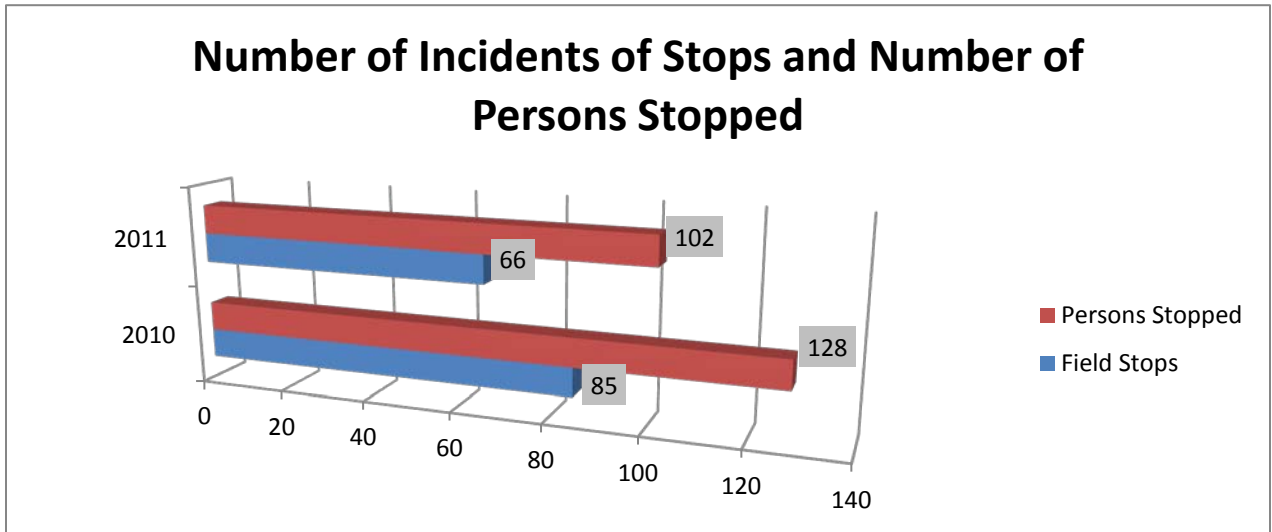
- Ongoing efforts to enhance agency integrity and transparency
- Collecting and analyzing citizen/field stop data
- Consistent efforts to sustain accountability and supervision of personnel
- Implementation of strategies that prevent biased-based policing

As part of our initiative, DPS has established an inquiry process that allows members of the community to request information about their interaction with a DPS Officer, if they are unsure of the reason or validity of a stop.

Investigatory Stop Data

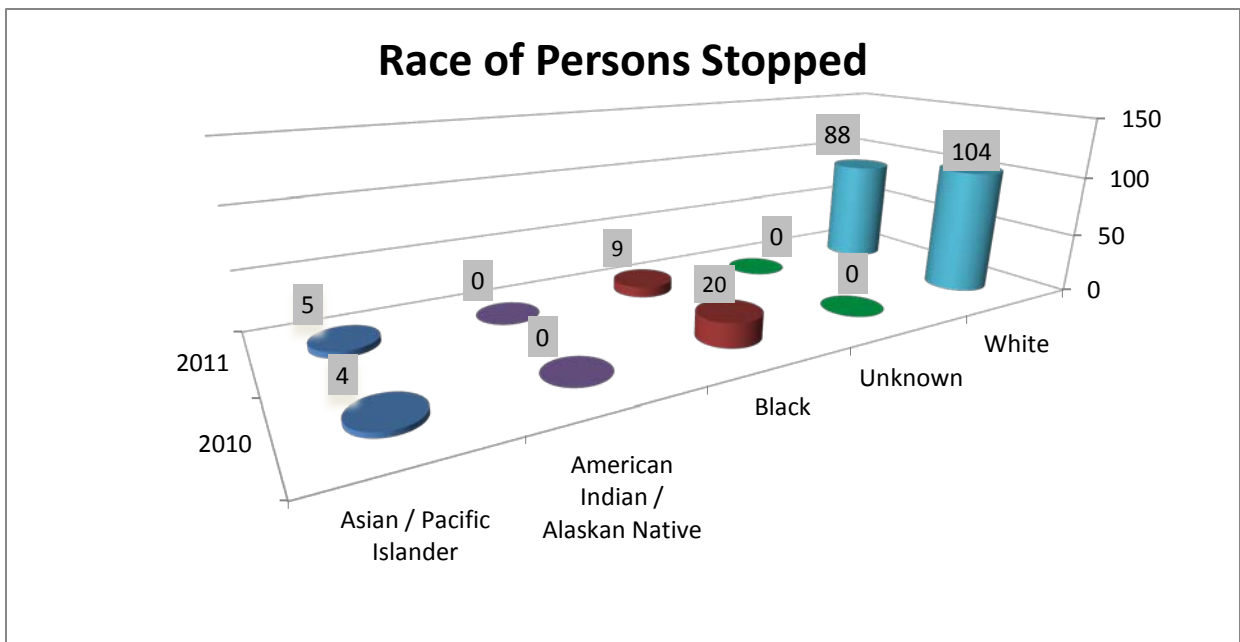
- From the beginning of the year to the end of the Third Quarter of 2011, there were 33,804 service and emergency call entries recorded by the Department of Public Safety.
- There were 66 reports of investigatory stops of persons which documented a total of 102 persons in total.
- The report also includes data through the Third Quarter 2011 regarding time, month, and day of Motor Vehicle and Investigatory Field Stops.

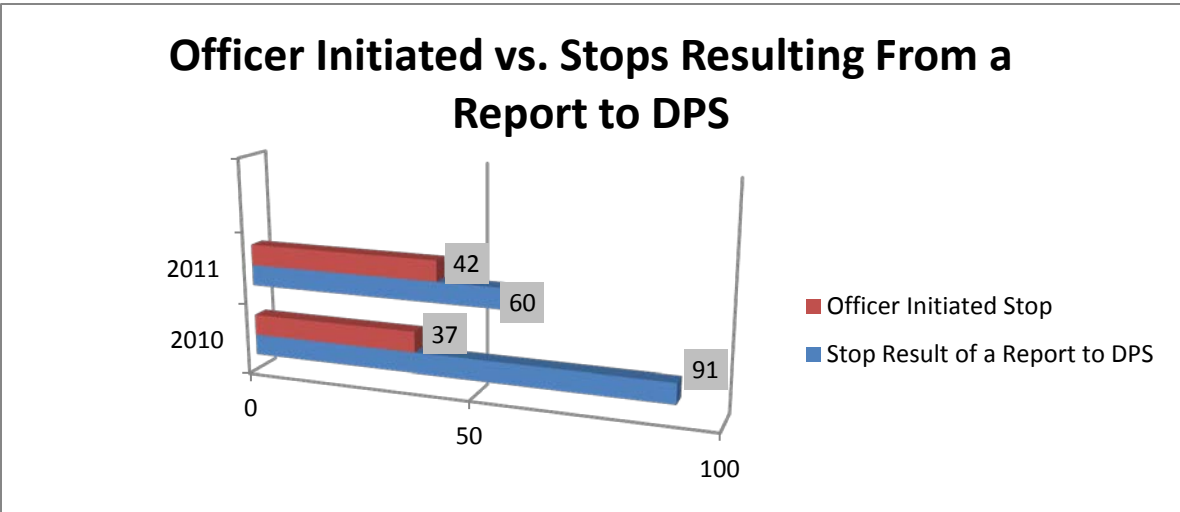
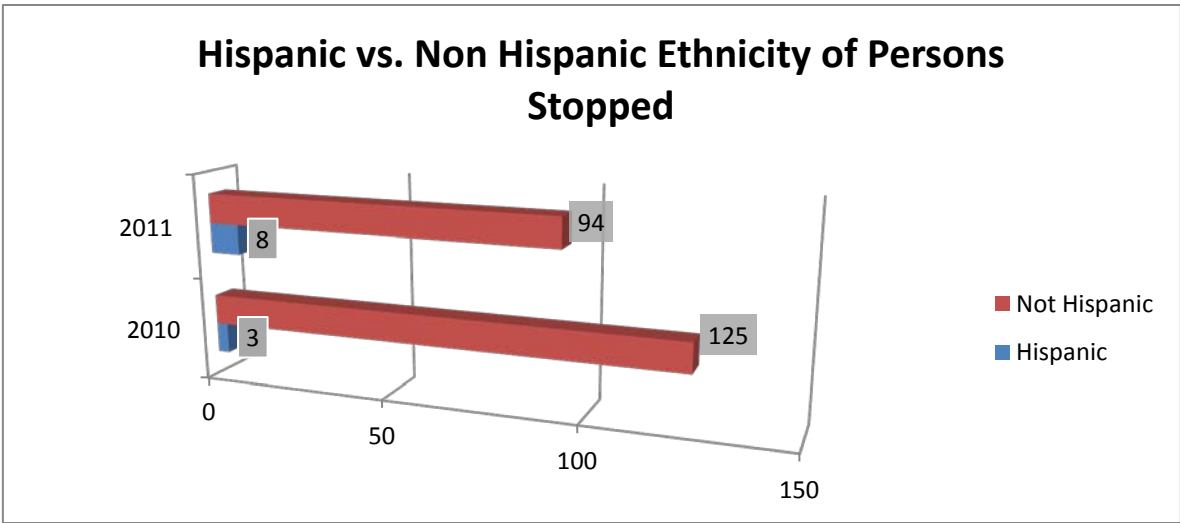
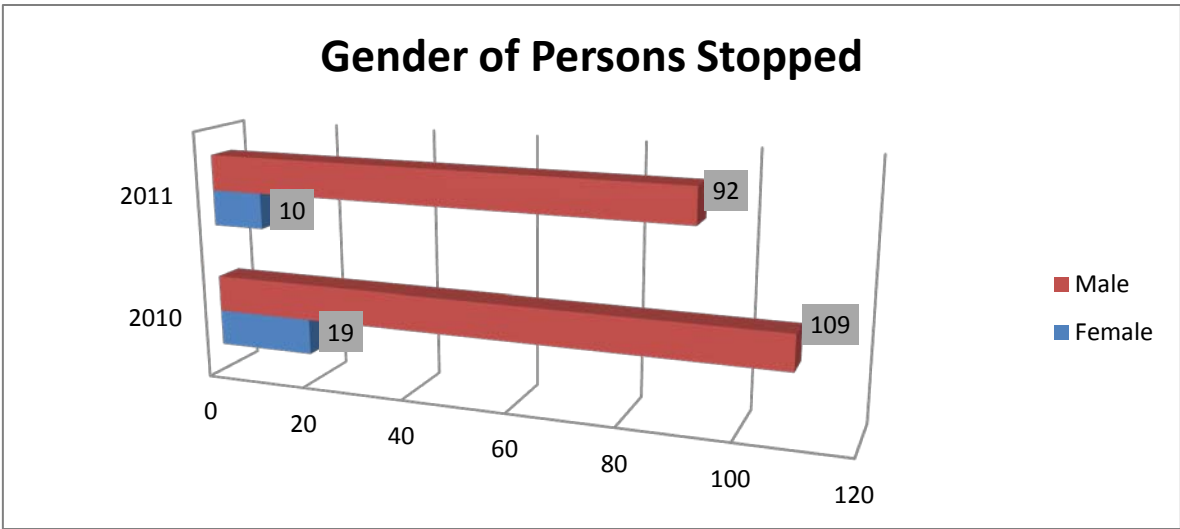
The chart below provides both the total number of persons stopped in the given time period and the total number of incidents of stops.



The chart below shows the breakdown by race of persons stopped. The categories utilized are standard and include:

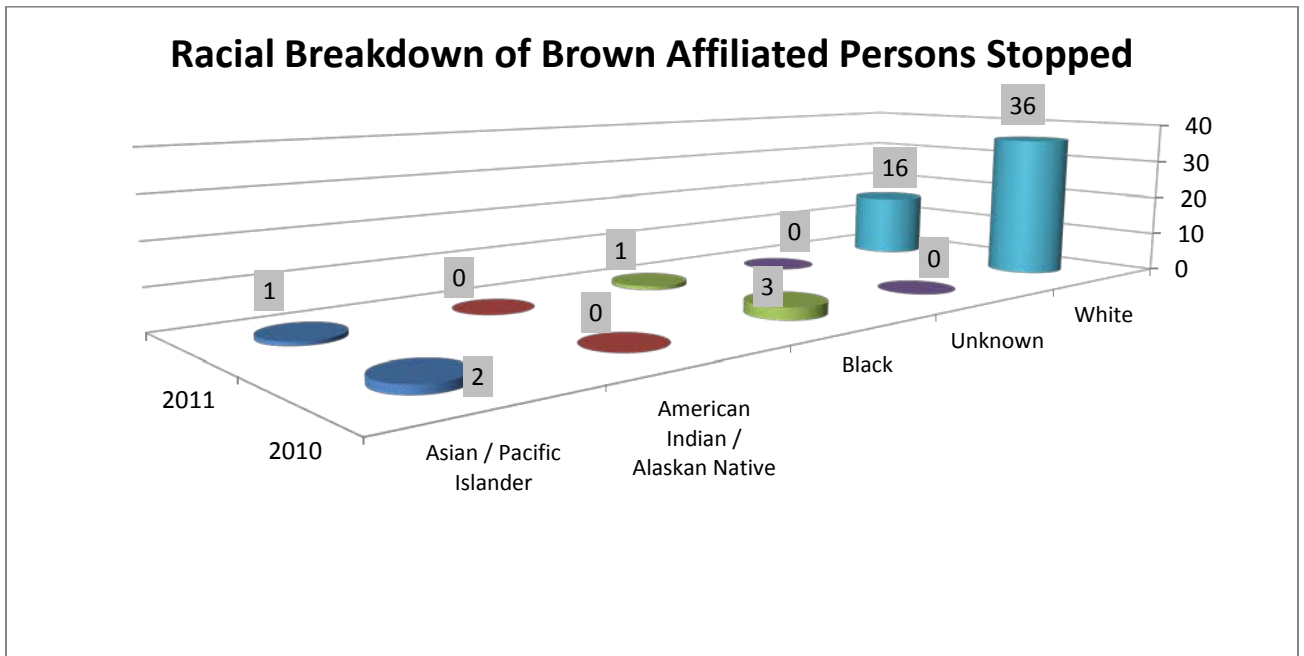
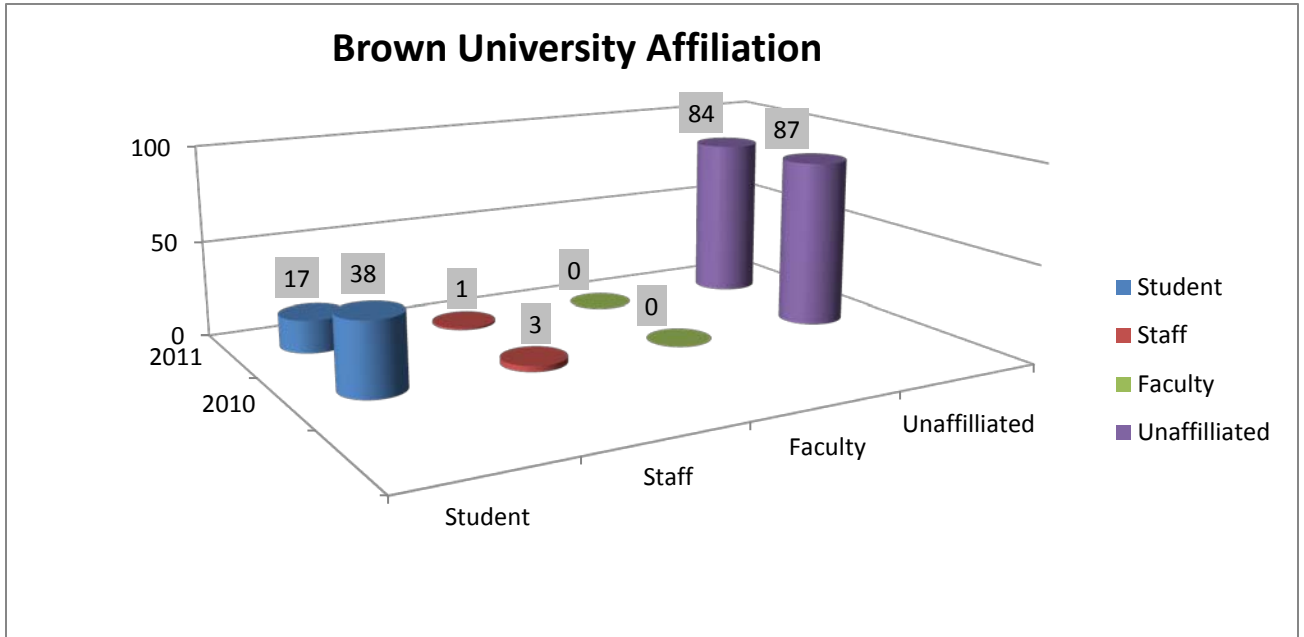
- Asian/Pacific Islander
- Black
- American Indian / Alaskan Native,
- White



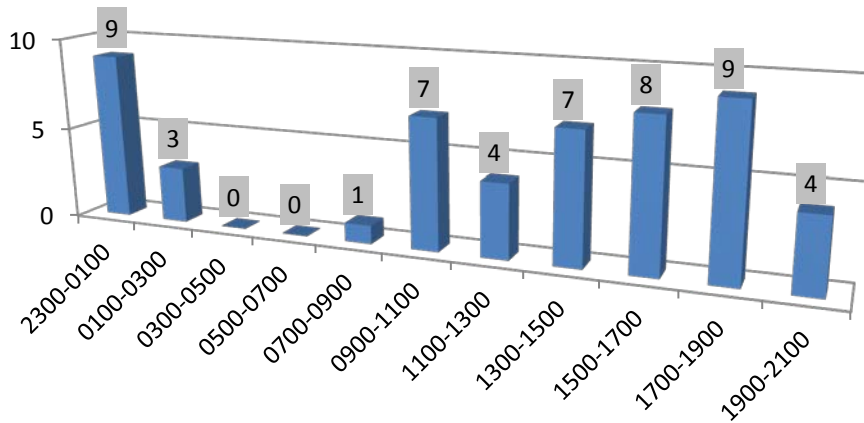


Brown University Affiliation

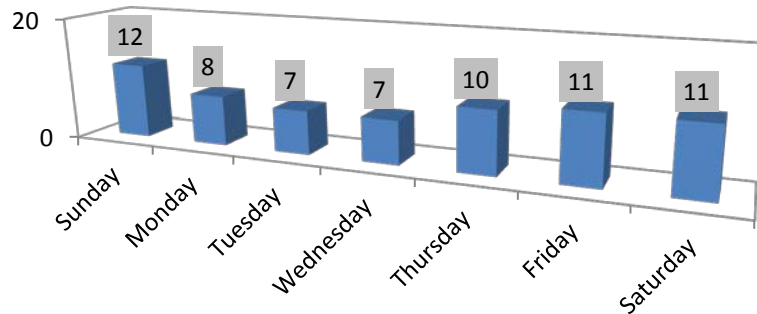
The department also documents whether the person stopped is affiliated with the University (student, faculty, staff member), or unaffiliated with the University.



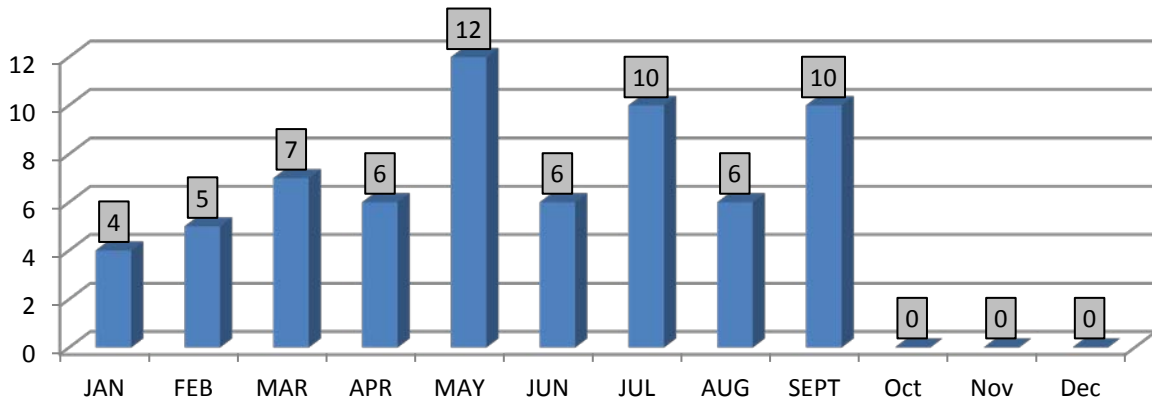
Distribution of Stops by Time of Day for 2011



Distribution of Stops by Day of Week 2011

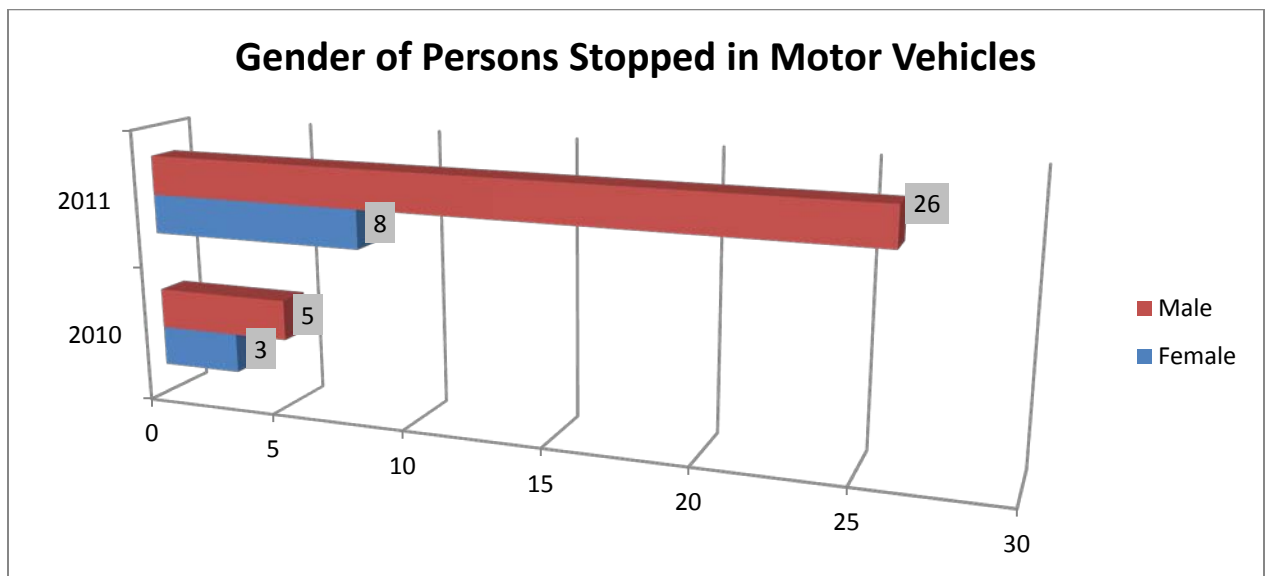
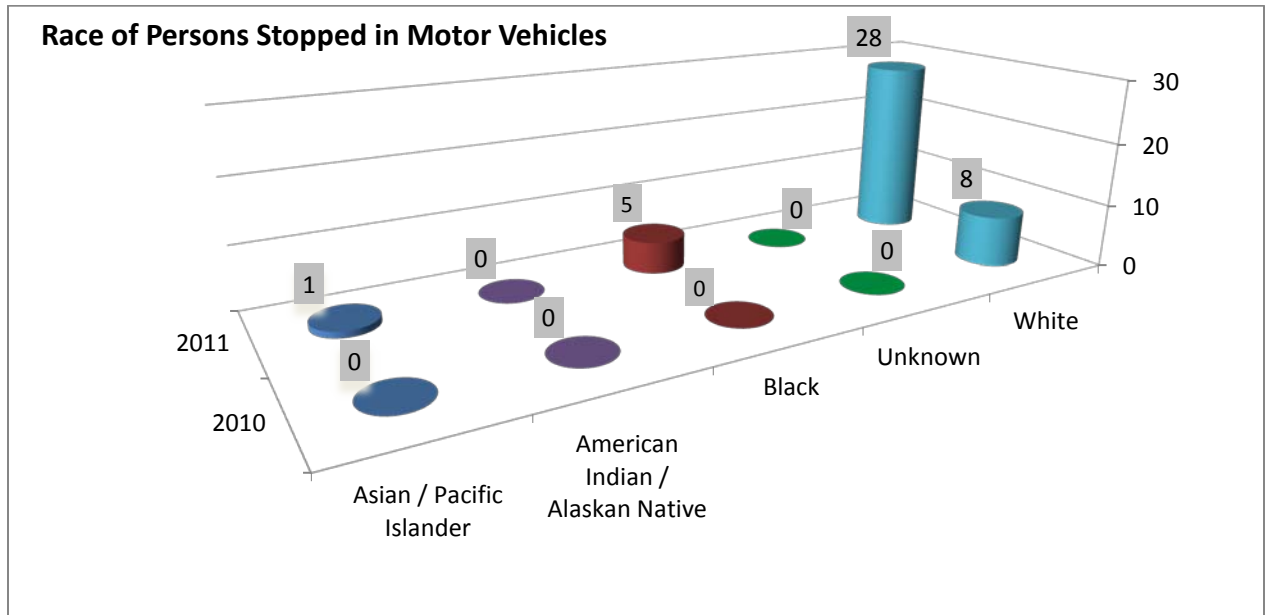


Field Stops per Month 2011

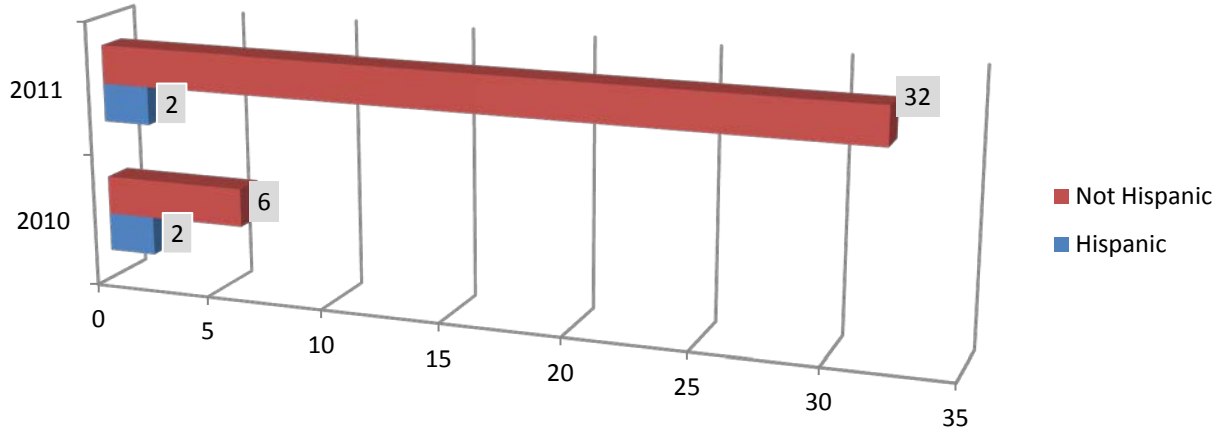


Motor Vehicle Stop Data

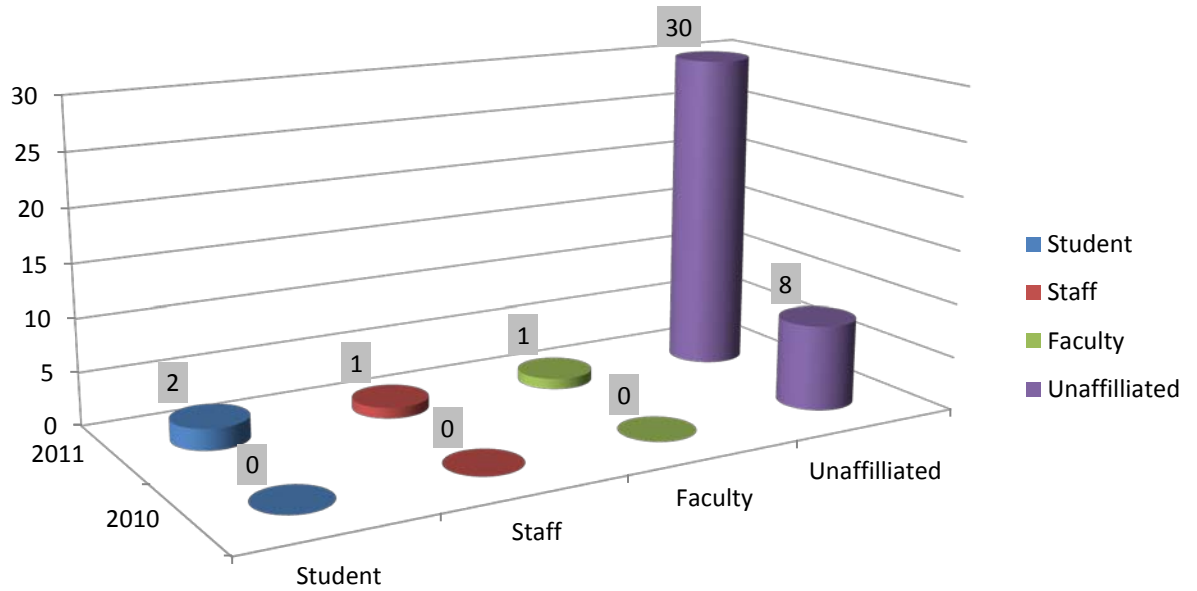
In January of 2008, the Department of Public Safety authorized its officers to conduct motor vehicle stops of suspicious vehicles and vehicles posing a danger to the community. In July of this year the Department of Public Safety began conducting traffic enforcement.



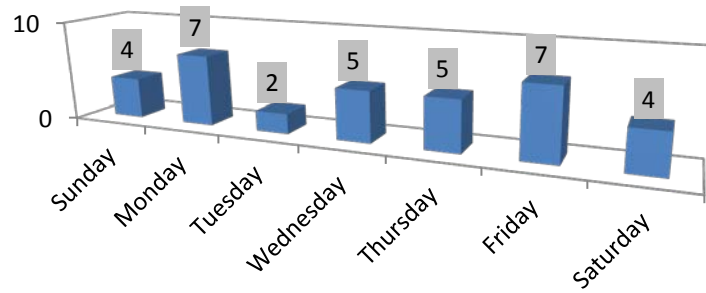
Hispanic vs. Non Hispanic Ethnicity of Persons Stopped in Motor Vehicles



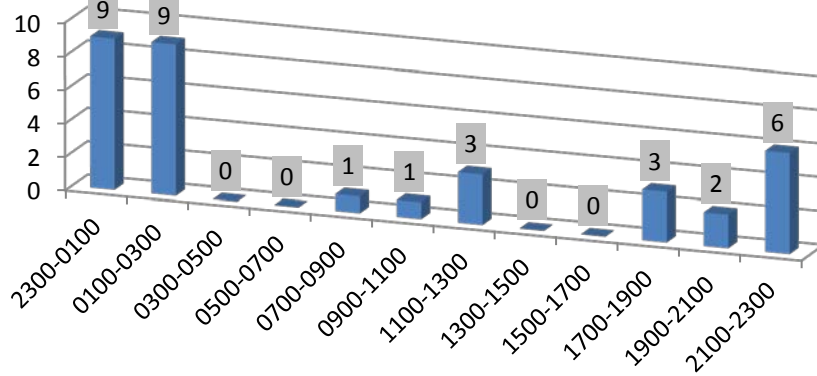
Brown University Affiliation of Persons Stopped in Motor Vehicles



**Distribution of Motor Vehicle Stops by Day of Week
2011**



**Distribution of Motor Vehicle Stops by Time of Day for
2011**



Motor Vehicle Stops per Month 2011

