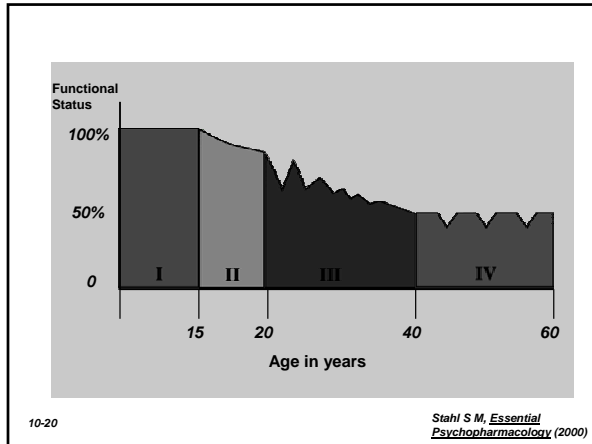


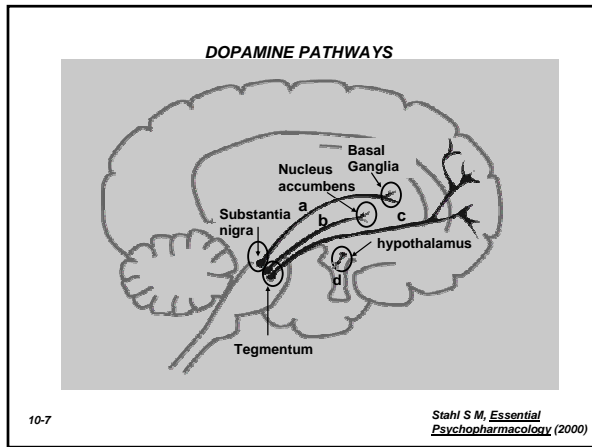
Positive Symptoms of Schizophrenia

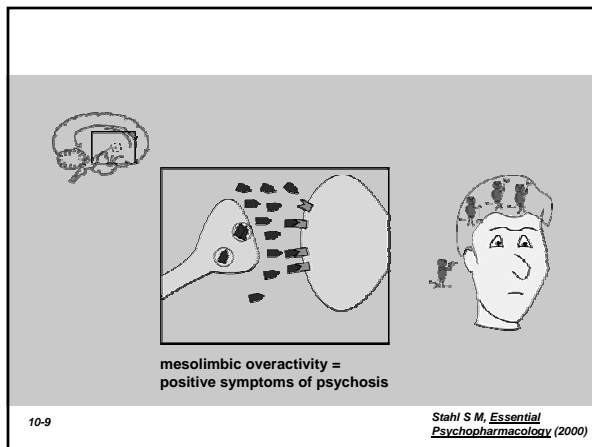
<p>Hallucinations</p> <ul style="list-style-type: none"> Auditory Voices commenting Voices conversing Somatic-tactile Olfactory Visual <p>Delusions</p> <ul style="list-style-type: none"> Persecutory Jealousy Guilt, sin Grandiose Religious Somatic Delusions of reference Delusions of being controlled Delusions of mind reading Thought broadcasting Thought insertion 	<p>Bizarre behavior</p> <ul style="list-style-type: none"> Clothing, appearance Social, sexual behavior Aggressive-agitated behavior Repetitive-stereotyped behavior <p>Formal thought disorder</p> <ul style="list-style-type: none"> Tagentiality Incoherence Illogicality Circumstantiality Pressure of speech Distractible speech Clanging
---	---

Negative Symptoms of Schizophrenia

<p>Affective flattening</p> <ul style="list-style-type: none"> Unchanging facial expression Decreased spontaneous movements Paucity of expressive gestures Poor eye contact Affective nonresponsivity Inappropriate affect Lack of vocal inflections <p>Alogia</p> <ul style="list-style-type: none"> Poverty of speech Poverty of content of speech Blocking Increased response latency <p>Avolition-apathy</p> <ul style="list-style-type: none"> Grooming and hygiene Impersistence at work or school Physical anergia 	<p>Anhedonia-asociality</p> <ul style="list-style-type: none"> Recreational interests, activities Sexual interest, activity Intimacy, closeness Relationship with friends, peers <p>Attention</p> <ul style="list-style-type: none"> Social inattentiveness Inattentiveness during testing
--	--







Mesolimbic Dopaminergic Hyperactivity in Schizophrenia

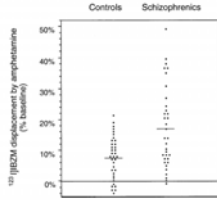
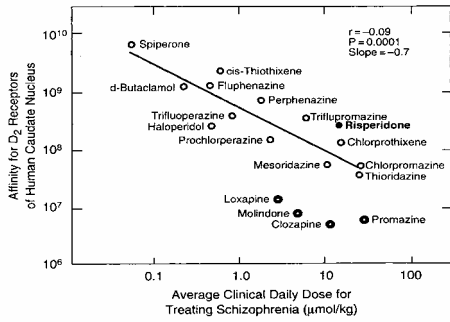
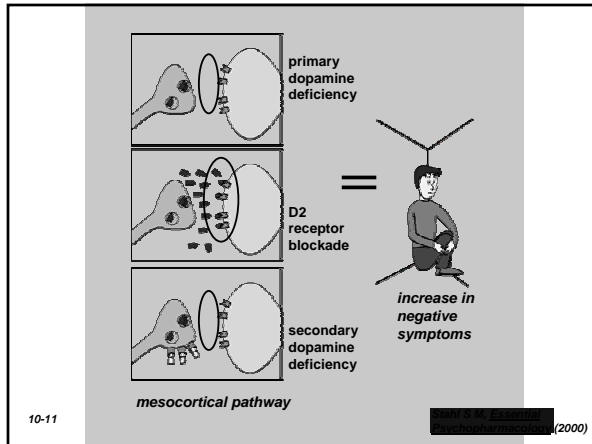


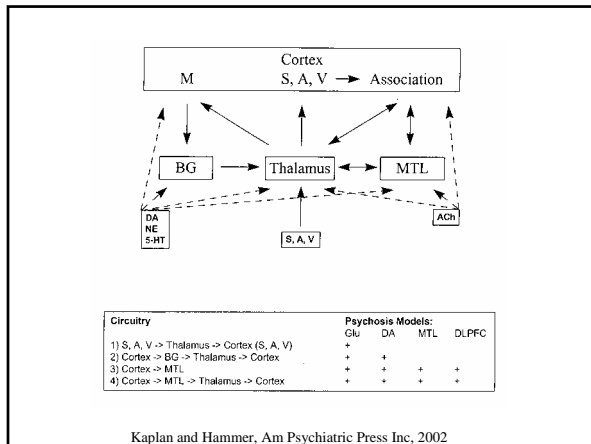
FIGURE 1. Effect of amphetamine (0.3 mg/kg) on ^{125}I IBZM binding in healthy controls and unmedicated patients with schizophrenia. The y axis shows the percentage decrease in ^{125}I IBZM binding potential induced by amphetamine, which is a measure of the increased occupancy of D_2 receptors by DA following the challenge.

Laruelle et al., Ann NY Acad Sci (2003)

Relationship Between Affinity for Dopamine D_2 Receptors and Daily Dose for Treating Schizophrenia







Thesis- Dopamine Dysregulation in Schizophrenia

<u>Mechanism</u>	<u>Schizophrenia Sxs</u>
1. Hypoactivity of PFC DA Systems	Negative/Cognitive Sxs
2. Hyperactivity of NAc DA Systems	Positive Sxs
3. Neuroleptic induced DA blockade	Improves Positive Sxs Worsens Negative Sxs
