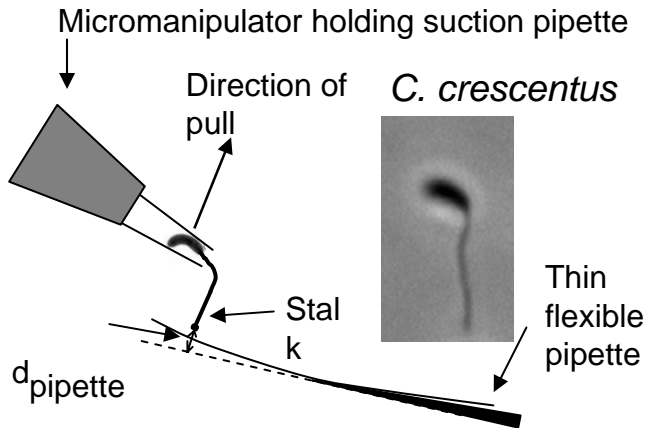
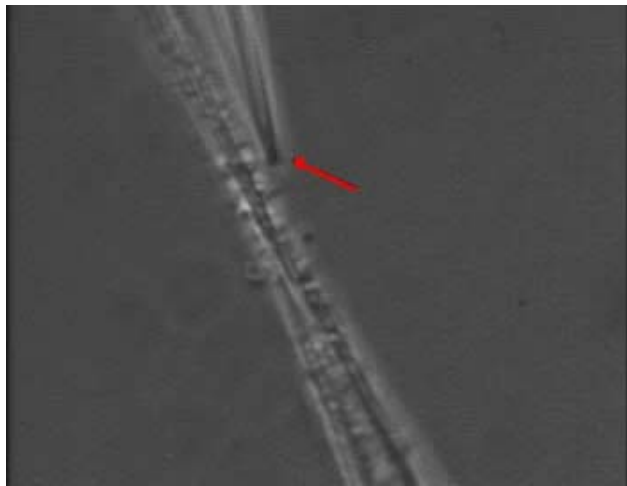


Measuring detachment force of *C. crescentus* by micromanipulation



- A micromanipulation system has been developed to measure the adhesion of single bacterial cells
- The detachment force varies from 0.11 to 2.26 μN (14 cells)
- Average force $0.59 \pm 0.62 \mu\text{N}$
- Adhesion strength (failure stress) $68 \text{ N/mm}^2 = 6800 \text{ N/cm}^2$



Such a strength is stronger than super glue, and is equivalent to

- ~hang 70 tons/(10 cm)²
- ~12 elephants on a palm