

## First Optional Homework Problem Set for Engineering 1630, Fall 2013

1. Using a K-map, minimize the expression:

$$OUT = \overline{A}\overline{B}\overline{C}\overline{D} + \overline{A}\overline{B}\overline{C}D + \overline{A}\overline{B}C\overline{D} + \overline{A}\overline{B}CD + \overline{A}B\overline{C}\overline{D} + \overline{A}B\overline{C}D$$

How many non-essential primes are there in the K-map? How many included non-essential primes are there in the minimized OUT expression?

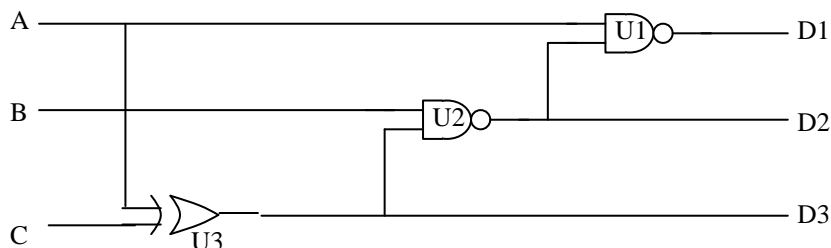
2. How many terms or elements does one of the shortest possible Gray code sequences in 4 variables have? All variables must change value at least once and the sequence must be closed, that is, start and end on the same term. (Try doodling on a K-map.) The longest sequence has 16 terms. How many sequences are there with lengths intermediate between the longest and shortest?

3. Draw the gate-level circuit for a four input multiplexor using only NOR gates.

4. Simplify the following expression and draw its gate-level circuit using only NAND gates:

$$C = \overline{X} \cdot \overline{Y} \cdot \overline{Q_1} \cdot \overline{Q_2} + X \cdot \overline{Y} \cdot Q_1 \cdot \overline{Q_2} + X \cdot Y \cdot \overline{Q_1} \cdot Q_2 + \overline{X} \cdot \overline{Y} \cdot Q_1 \cdot \overline{Q_2} + X \cdot \overline{Y} \cdot \overline{Q_1} \cdot \overline{Q_2} + X \cdot \overline{Y} \cdot \overline{Q_1} \cdot Q_2$$

5. Consider a three input NAND gate made with just N-MOSFETs and a resistor with  $V_{DD} = 5V$ . The transistors have parameters:  $K_N = 5 \cdot 10^{-5}$  amp. per volt sq.,  $\frac{W}{L} = 3$ ,  $a = 0.2$ , and  $V_{TH} = 0.9$  volts. What resistor value is needed to make  $V_{OL} \leq 0.9$  volts. Sketch the circuit too. [Note: to keep life simple, you may neglect the term in the current proportional to  $\frac{(1+a)V_{DS}}{2}$ . The main difficulty in this problem comes from the slightly different gate-source voltages for each transistor. Assume that  $V_{DS}$  for the transistor connected to ground is 0.25 volts and see if the output voltage meets the requirement.]
6. The circuit below has inputs, which always change essentially simultaneously, if they change at all. All input combinations are possible and so are all possible changes. Suppose the XOR gate is glitch-free but has a time delay of  $2\tau_p$ . All the other gates have delay,  $\tau_p$ . Which output or outputs will have glitches? For each output susceptible to glitches, find at least one input transition that will cause a glitch and estimate how wide it will be in units of  $\tau_p$ .

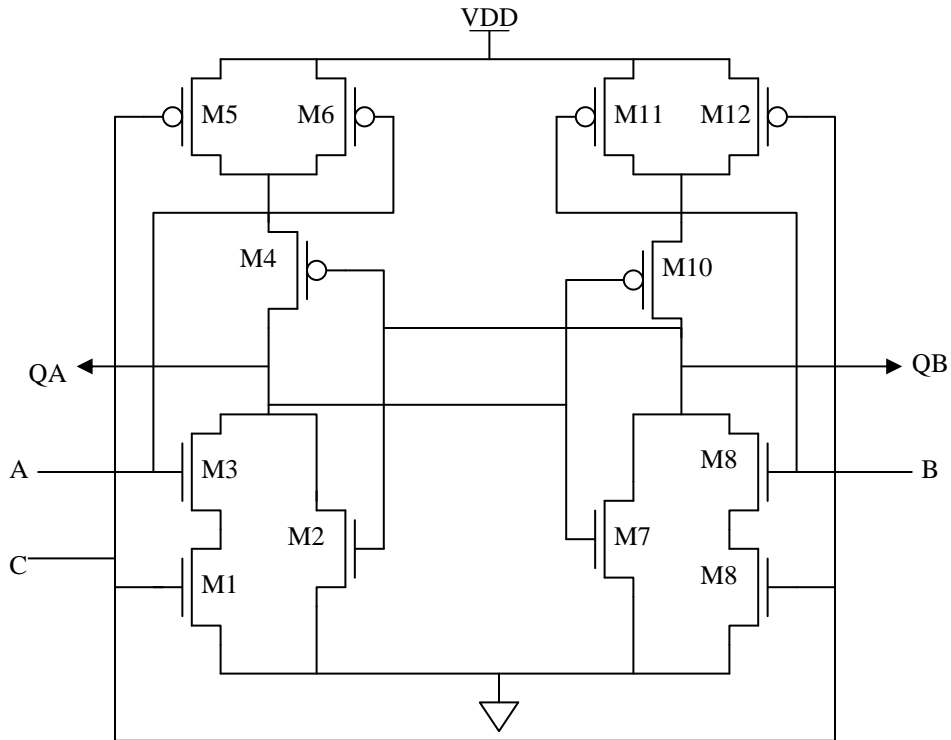


7. Design a three-bit Gray code counter with an Up/Down control line and a count enable (CE) line. Implement this with D - flip flops. (A Gray code is a binary sequence in which only one bit changes at each step of the sequence. The row or column markings of a K-map are an example. For the sequence in this problem, start off 000, 001, 011, 010.....) You may use three, one-of-two multiplexers for the count enable logic. Find the minimum logic needed to derive the Next D lines from the Q's and from the Up/Down line.
8. A traffic light placed at the intersection of a busy north-south (N-S) road with a lightly traveled east-west (E-W) road is connected to a sensor which detects traffic waiting on the east-west road. The sensor asserts (sets to '1') a signal line ETW (East-west Traffic Waiting) when such traffic is present. The traffic light is supposed to respond to this signal and to a clock signal in its controller by operating the light according to the following rules:
  1. After turning on the NS green light, it will ignore ETW and wait for 40 seconds.
  2. North-south traffic continues to have a green light until there is east-west traffic waiting (i.e. ETW=1).
  3. The yellow light will be on for N-S traffic for TWO (2) clock cycles.
  4. E-W traffic has a green light for 40 seconds.
  5. E-W traffic then has a yellow light for ONE (1) clock cycle before N-S has green again.

The problem is to design a controller for this traffic light in the form of the block diagram shown below. This is a finite state machine with the slight twist that one of its inputs (signal TMO, Timer Output) is the output of a monostable multivibrator or one shot (similar to the 74LS123 in your kit) which is used to time the 40 second intervals. The one shot responds to a rising edge at one input by immediately asserting an output for some set period of time independent of the subsequent history of the input. The signal line TMI (Timer Input) is an output of the next state logic which triggers the multivibrator on a low to high transition to begin a 40 second time interval. The D flip-flop between TMI and the multivibrator prevents glitches retriggering the one shot, that is, it prevents an edge on TMI from affecting the one-shot until the 40 sec time runs out. The timer output pulse itself clears the D flip-flop.

The system is to use three, edge triggered, D flip-flops, but will not need to use all the states. The state  $Q_2 \cdot Q_1 \cdot Q_0 = 000$  is to be one of the states used. If the system should accidentally get to any unused state, it should make a transition to 000 immediately. The "light signal" outputs will consist of green, yellow and red light signals for the north-south traffic (GNS, YNS, RNS) and similar signals for east-west (GEW, YEW, REW). A given signal line should be at logic '1' when the corresponding light is lit. Questions:

1. Make a table assigning particular conditions of the system to particular states of the flip-flops.
2. Make a state diagram of the system.
3. Make a transition table for the system showing the present state, the next state, the conditions of ETW and TMO which cause transitions, and the values which TMI and GNS should have for each combination of state and inputs.
- 4 Find Boolean expressions for  $D_2$ ,  $D_1$ ,  $D_0$ , TMI, and GNS in terms of  $Q_2$ ,  $Q_1$ ,  $Q_0$ , ETW and TMO.
5. Draw a gate implementation of the logic for TMI.
9. The circuit below is designed in CMOS logic. Transistors M1, M2,...M6 form a single gate with inputs A, C, and QB.

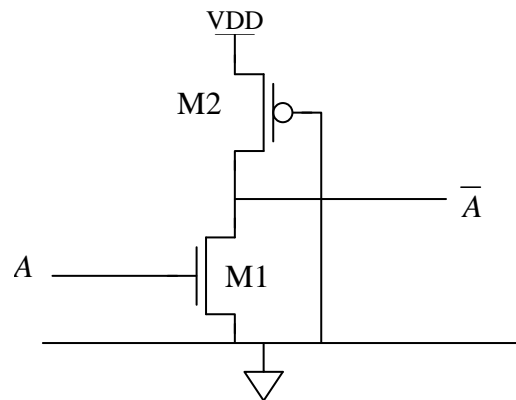


What logic function is implemented in this gate? Draw a gate-level schematic, that is, replace the transistor version with standard gate symbols. What is the overall circuit? If the capacitances at nodes QA and QB are both .07 pf. (which is typical of the levels actually encountered), what is the power dissipation if the inputs make Qa change state roughly at 10 MHz.? (The mean period of Qa is 200 ns and its mean frequency is 5 MHz. For comparison, one half of a 74LS74, which is not the same thing but which has some similarity, dissipates 10 mw. with essentially no change in power up to its limit of operation which is about 20 MHz.)

How many transistors would it take to make a master-slave flip-flop based on the partial design in this problem?

10. For a given level of technology, a pure NMOS logic gate with a pull up resistor (or transistor) is sometimes faster than a conventional CMOS implementation. This is partly because the load capacitances driven by the output of a gate do not include the input capacitance of P channel devices in the next gate. The tradeoff is much higher power. For certain critical paths on a complex chip, this extra speed may be worth the tradeoff. The circuit below is one way to implement such a gate in a CMOS system by having the P channel device turned on at all times.

Assume that the input high level is 5 volts. What is the ratio of the width of the P channel device to the N channel width that will insure that  $V_{OL}$  is less than 0.8 volts? (Assume that the thresholds of the two device types are both 0.8 volts, that  $K_N = 2.5 \cdot K_P = 5 \cdot 10^{-5}$  amp/V<sup>2</sup> and that  $a = .3$  for both devices.) What is the **gate threshold** for this circuit? (I defined the “gate” threshold to be the value of input voltage to a gate at which the input and output voltages are equal.) If  $\frac{W}{L} = 3$  for the N channel device, what is the power dissipation of this inverter? (Assume that the input is high and low for roughly equal proportions of time.)



11. The circuit below is a simple gate realized in an unusual way. What Boolean function does it realize? Draw the complete actual transistor version of the circuit. In doing so, assume that both B and its complement are available as inputs. [This type of gate has some advantages in certain circumstances because when embedded in a large system, it is easier to test for manufacturing faults. For a discussion of this issue, see M. Katoozi and M Soma, IEEE JSSC 23 (Oct. 1988) 1241-1248.]

