

SPRING/SUMMER 2012

INVENTORY

NEWS FROM THE JOUKOWSKY INSTITUTE FOR ARCHAEOLOGY AND THE ANCIENT WORLD

INTERNATIONAL VENUES FOR BROWN ARCHAEOLOGY

Members of the Joukowsky Institute are by nature 'international' in our activities: pursuing fieldwork and attending conferences abroad, learning a range of foreign languages, working with citizens of numerous countries. This year, however, Brown archaeology also took place in two more unusual formats and venues.

First, in January 2012, I attended the World Economic Forum in Davos/Klosters, Switzerland as part of a Brown faculty delegation. The subject of the 'IdeasLab' (conducted in a very frightening pecha kucha format) was 'Decoding Data with Brown University', its underlying question: how are new methods to understand data generating breakthrough insights, from history to health? The Brown team involved faculty from the Brown Institute for Brain Science and the Departments of Biology and of Applied Mathematics, as well as the Joukowsky Institute (for a brief summary, see <http://www.weforum.org/sessions/summary/decoding-data-brown-university>).



Archaeology might seem a peculiar thing to have in such a conversation, but – as in all fields – datasets in archaeology are rapidly expanding and growing through the application of a range of technologies, from satellite imagery to nano-indentation. I specifically spoke about the case of Petra in Jordan, a much visited but very fragile site, arguing that massive data collection both allows archaeologists to monitor and track structural deterioration and helps urban management and planning for the future. Through new technologies, the youth community in Petra also potentially has the opportunity to learn transferable, career-enhancing skills, such as geophysics and database management.

This concept – of leveraging economic and educational benefits through archaeological work – fell on friendly ears at the World Economic Forum. More traditionally, I also spoke in a session on 'Civilization and Transformation: Myths of Our Creation', moderated by Niall Ferguson of Harvard University, discussing civilizational myths such as the notion that empires inevitably 'decline and fall', that walls always 'separate', and the monuments are highly stable entities (for a summary, see <http://www.weforum.org/>

<http://www.weforum.org/> sessions/summary/civilization-and-transformation-myths-our-creation). All in all, the World Economic Forum was a more diverse setting than certainly I had previously believed.

The other unusual international 'event' of the year was our Getty Research Seminar, 'The Art's of Rome's Provinces'. This seminar, organized through Brown



University and sponsored by the Getty Foundation, actually started in 2011 with the seminar team of some two-dozen, chiefly junior academics, visiting museums and sites in Great Britain. In May 2012, the same group reconvened and spent two weeks in Greece (including the time around the recent Greek national elections). This collective project was led by Professor Emerita Natalie Boymel Kampen (Columbia University, now a Visiting Professor at Brown) and myself, in conjunction with a team of distinguished international scholars.

The basic question driving the seminar was the exploration of how we understand the arts of

Roman provinces in light of new theoretical thinking about colonialism and imperialism, set within the framework of an increasingly global world. The highly diverse nature of the group – with academics originally from Canada, Germany, Great Britain, Greece, India, Italy, Lebanon, Palestine, Rumania, Serbia, Spain, and the United States – made for a rich and often quirky conversation, full of excitement and sometimes unexpected results. A book is planned to share our group results.

Sue Alcock

Director, Joukowsky Institute for Archaeology and the Ancient World
Joukowsky Family Professor of Archaeology
Professor of Classics; Professor of Anthropology; Professor of the History of Art and Architecture



Top left photo by Moritz Hager, bottom left by Andy Mettler. both copyright World Economic Forum

To learn more about the Joukowsky Institute, visit www.brown.edu/joukowskyinstitute

NEW DOCTORS OF ARCHAEOLOGY

The Joukowsky Institute for Archaeology and the Ancient World is delighted to announce the successful defense of three doctoral dissertations this year.

Lyra D. Monteiro

Racializing the Ancient World: Ancestry and Identity in the Early United States

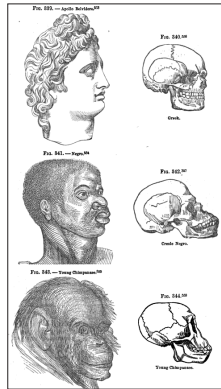
In creating their new country, early Americans used the ancient language of Latin to express their sense that they were living in a *novus ordo seclorum*, a new order of the ages. Dr. Monteiro's dissertation argues that Mediterranean antiquity was mobilized in the service of organizing race in a slaveholding republic predicated on equality but erected on exclusion and difference. Focusing on the period between the Revolutionary War and the start of the Civil War (1770-1861) – an era that previous scholars have shown was pivotal in the construction of the modern concept of race – the dissertation analyzes how ideas about “whiteness” and “blackness” shaped encounters with Egyptian mummies and classical sculptures in American museums and medical schools; theatrical representations of ancient Greeks, Romans, Carthaginians, and Egyptians; and the classicizing landscapes of southern slave plantations.

Dr. Monteiro successfully defended her dissertation on Tuesday, April 24th.

Bradley Sekedat

Large Politics and Small Quarries: Local Resources and Imperial Governance in Roman Asia Minor

Dr. Sekedat's dissertation combines survey archaeology and materials science to explore the connection between Roman imperial governance and small-scale marble quarries in western Asia Minor. The primary case study revolves around eleven marble quarries in the hinterland of Sardis, a major city from the Iron Age through the Roman period. By considering issues such as place, space, landscape, and memory, Dr. Sekedat's research reveals



variation in marble extraction practices throughout the eastern Mediterranean during the Roman period, arguing for greater complexity in Roman industrial organization. Drawing on theories of governmentality, this research further demonstrates that while large-scale polities employ deliberate acts of landscape intervention, they are also shaped by local landscape contexts and social practices.

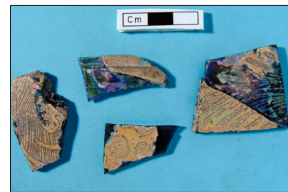
Dr. Sekedat successfully defended his dissertation on Monday, March 20th.

Carolyn Swan

In Flux: Glass, Technology, and the Glassmaking Industry of the Middle Byzantine and Early Islamic Eastern Mediterranean – the Archaeology and Archaeometry of a High-Temperature Craft

Dr. Swan's dissertation explores the history of glassmaking technology in the post-Roman world, focusing on Hisn al-Tinat in southern Turkey and Ayla in southern Jordan as case studies. Using methods from the fields of archaeology, art history, and materials science, Dr. Swan studied 250 fragments of glass vessels and jewelry. Combining typological, chronological, and chemical data allowed her to make detailed observations about economics, craft, and taste in glassmaking practices. Her findings show that glass production using mineral soda as a flux continued well into the 10th century CE, while the glass production using plant ash soda as a flux began in the 9th century CE and was totally dominant by the 11th century CE. Her research also identifies two entirely new chemical groups of glass that appear in the 10th century CE and seem to be exclusive to the northern regions of the Byzantine world; these unique glass types suggest that while the Byzantine and Islamic glassmakers were inheritors of the Roman glassmaking industry and shared many technological and economic elements, they also developed in rather distinct ways.

Dr. Swan successfully defended her dissertation on Friday, March 23rd.



Envisioning the Tomb of the First Emperor

Conceived and designed by Building Big! + Olga Mesa

Qin Shi Huang (259-210 BCE) was king of the state of Qin and First Emperor of a unified China, which he ruled from 221 to 210 BCE. Gifted with exceptional military prowess and colossal ambition, the First Emperor conceived and completed many monumental projects, including a massive road system, immense defense structures, and – grandest of all – his own mausoleum. Believing that his sway extended to the afterlife, Qin Shi Huang built a funerary complex of unprecedented size and complexity. His tomb was so large it would occupy a substantial portion of the city of Providence. It included more than a hundred chariots, several hundred horses, human and animal sacrificial victims, and as many as 8000 life-size terracotta warriors.



Students in Postdoctoral Fellow Felipe Rojas's ARCH 1715, *Building Big! Supersized Architectural and Engineering Structures From Antiquity*, observed the Year of China by recreating a fraction of the sprawling mausoleum. Life-sized prints of the terracotta warriors made by Building Big! students were erected on the Brown University Main Green, and markers were placed around campus to give a sense of the scope and dimensions of the sumptuous tomb. In addition to celebrating the diverse history and archaeology of China, this project was intended to inspire the Providence community to envision one of the world's largest and most fascinating funerary structures.



ARCHAEOLOGY OF TURKEY: STATE OF THE FIELD 2012

Archaeology has a long history in what is modern day Turkey, and the archaeology of Turkey has long been a strong presence in the history of the Joukowsky Institute. In fact, this past year, the number of faculty and graduate students who do research in Turkey was so great that it seemed almost imperative to follow in the footsteps of last year's "Archaeology of Italy: State of the Field 2011" by holding a symposium similarly dedicated to clarifying where archaeology in Turkey is, where it has been, and where it is going. Joukowsky Institute doctoral candidate Sarah Craft, whose dissertation focuses on the late Roman and early Byzantine landscapes of Anatolia, led the planning process

The aim of the symposium was to examine the place of the archaeology of Turkey in the North American academy, as well as contemplating current and future structures for archaeological research. The symposium's invited speakers came from a range of institutions and archaeological projects – in terms of method, location, chronology, and specialization – from across Turkey. They addressed issues related to their specific experiences, such as directing long-term major projects; salvage projects, especially with regard to dam construction; community archaeology; and the opportunities and difficulties involved in starting up new projects in the current political and financial climate. Hour-long roundtables gave speakers a chance to respond to questions raised by the presentations as well as those of audience members.



Symposium participants dedicated a great deal of time to working through challenges and rewards of how different projects and scholars have engaged with local communities. The ethical responsibilities of the archaeologist working in Turkey, from research questions and methodologies to collaboration with local museums – as well as with each other, across chronological specializations – featured throughout

the symposium, during which speakers also discussed permitting structures and current developments in legislation and cultural heritage management. For example, Müge Durusu-Tanrıöver, a 2nd-year graduate student at the Joukowsky Institute, presented her impressions of recent controversies over, and the ethical implications of, the price-tagging of artifacts and the legalized sale of archaeological material by Turkish museums.

The successful weekend led to lively and productive discussions, and promises to yield future publications. Durusu-Tanrıöver and Craft are currently working on writing up the questions, issues and directions of the conference in a journal article, organizing it around the main take-away themes of collaboration, permitting structures, data comparability, and perhaps most pressingly, heritage management.

The success of the symposium builds upon what is likely to become a tradition at the Joukowsky Institute: convening scholars to critically examine the practice of archaeology in the different countries in which faculty and students work.



CORE FACULTY AND EXECUTIVE COMMITTEE

Susan E. Alcock
Director, Joukowsky Institute for Archaeology
Joukowsky Family Professor in Archaeology
Professor of Classics and Anthropology

James P. Allen
Wilbour Chair and Professor of Egyptology & Ancient Western Asian Studies

Christoph Bachhuber
Postdoctoral Fellow in Archaeology

Laurel Bestock
Assistant Professor of Archaeology and Egyptology & Ancient Western Asian Studies

John Bodel
W. Duncan MacMillan II Professor of Classics and Professor of History

Sheila Bonde
Professor of History of Art and Architecture, Professor of Archaeology

John F. Cherry
Joukowsky Family Professor in Archaeology
Professor of Classics and Anthropology

Thomas Garrison
Adjunct Assistant Professor in Anthropology and Archaeology

Ömür Harmanşah
Assistant Professor of Archaeology and Egyptology & Ancient Western Asian Studies

Susan Ashbrook Harvey
Chair and Willard Prescott and Annie McClelland Smith Professor of Religious Studies

Stephen D. Houston
Dupee Family Professor of Social Science
Professor of Archaeology

Natalie Boymel Kampen
Visiting Professor of Roman Archaeology and Art

Serena Love
Postdoctoral Fellow in Archaeology

Steven Lubar
Director, John Nicholas Brown Center for Public Humanities and Cultural Heritage; Director, Haffenreffer Museum of Anthropology

Rachel Mairs
Postdoctoral Fellow in Archaeology and Egyptology & Ancient Western Asian Studies

John M. Marston
Postdoctoral Fellow in Archaeology and Environmental Change

Rebecca Molholt
Assistant Professor of History of Art & Architecture and Archaeology

Carrie Murray
Visiting Assistant Professor of Classical Archaeology

Felipe Rojas
Postdoctoral Fellow in Archaeology

Andrew Scherer
Assistant Professor of Anthropology and Archaeology

Christopher Tuttle
Visiting Scholar in Archaeology

Margaret Watters
Research Fellow in Archaeology

FORTRESS IN A FORGOTTEN LAND

In March 2012, Assistant Professor Laurel Bestock started a new project at the site of Uronarti in northern Sudan. Uronarti was an island in the Nile where the Egyptian kings of the 12th Dynasty, c. 1900 BC, built one of a series of massive mud brick fortresses. The fortresses controlled river and desert traffic and gave the Egyptians access to the gold mines of Lower Nubia. Most of the fortresses were lost when the Aswan High Dam was built in the 1960s, but Uronarti and one other were only recently found to have survived.



Brown University's project, which is run jointly with Christian Knoblauch from the University of Vienna, is designed to document and study not only the fortress itself but also other sites in the area. The first season was only one week long, and was designed primarily to figure out the logistics of running a project in an area where no archaeologists have worked for 60 years and where no

local villages can be used for support.

Despite the heat, biting flies, crocodiles, and difficulty of



getting to the site, this year's work was a great success. In particular, areas of dry-stone construction with large amounts of 12th Dynasty pottery were found well outside of the fortress itself, indicating that not all Egyptians at Uronarti were living within the fort. The regular presence of Nubian sherds also suggests that we will be able to explore questions of the relationships between the Egyptians and the local

population at the time the fort was occupied.

In addition to the island itself, the project team was able to do some sight-seeing by boat.

The concession includes an area for 5km around the island, and

Bestock and Knoblauch intend to do a great deal of survey in coming seasons. Already the team has located and begun to document a massive fortification wall that ran for more than 2km along the west bank of the Nile between the southern Egyptian fortresses. Remarkably, they have also found that some walls of a fortress that had been flooded are, while badly damaged, still partly intact and accessible.

