



# CULTURE CARAVAN

## Haffenreffer Museum of Anthropology School Programs 2011-2012

Let us deliver the world's cultures right to your classroom with objects from the Haffenreffer Museum's famous collections! The Museum has brought experiential educational programs to school classrooms, libraries, camps, and after school programs for more than 40 years. Discover what we have to offer you and your school this year!

Haffenreffer

Museum of Anthropology AT BROWN UNIVERSITY



Live up your day with a visit from the Museum's Culture CaraVan! We bring an assortment of hands-on materials and projects to your classroom or site so that students can examine real museum objects and natural materials with images and discussion topics tailored to the age of your group. Our engaging programs and pre-visit materials will help you to meet a wide range of curriculum standards that will enhance your lesson plan. Choose from eight exciting programs that bring the past and present to life in your classroom. Craft projects are part of most programs.



### To book a program

Contact the Museum by phone at 401-253-8388, by email at haffenrefferprograms@brown.edu, or visit our web site at www.brown.edu/Haffenreffer

**Scheduling:** Culture CaraVan programs are available Monday through Friday in two-hour time slots, however, we can adjust any program to fit shorter class periods. We can adapt each program for any grade level, and we will make every effort to accommodate the needs of your group. Register as early as possible! Although we may be able to meet shorter requests, six weeks in advance is a good rule of thumb due to the popularity of these programs. To ensure a quality experience, there is a maximum of 30 students per session. If your group surpasses 30, we recommend scheduling two consecutive sessions.

**Cost:** One session; \$6 per person, \$150 minimum charge. Two sessions on the same day (one morning/one afternoon session); \$6 per person, \$270 minimum charge.

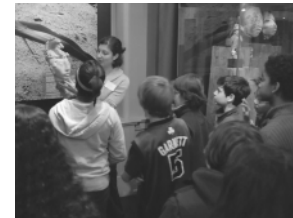
**Chaperones:** A classroom teacher or aide should be in the classroom at all times to assist the museum educator.

**Cancellations:** A two-week notice is required for all cancellations or a \$50 cancellation fee will be charged (except for snow days).

**Special needs:** If any in your group have special needs, please let us know when you are scheduling. We are committed to having our programs accessible to all.

**Book your CaraVan now to ensure that your classroom can enjoy this popular program. Call us today at 401 253-8388 or email us at haffenrefferprograms@brown.edu**

Haffenreffer Museum of Anthropology  
300 Tower Street, Bristol, RI 02809  
401 253-8388, fax: 401 253-1198  
email: haffenrefferprograms@brown.edu  
www.brown.edu/Haffenreffer



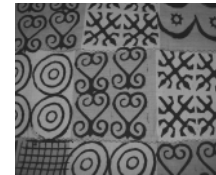
### Visit the Museum!

Groups are welcome to visit the Haffenreffer Museum's exhibits located in Manning Hall at Brown University (21 Prospect Street, Providence). Current exhibits are listed on our website.

The Museum is free and open to the public Tuesdays through Sundays 10 a.m. to 4 p.m. Groups of more than ten participants are encouraged to call at least two weeks in advance to schedule a visit. There is a maximum of 40 group participants allowed in the Museum at any one time. K-12 school groups must be accompanied by one adult chaperone per ten students. Guided tours and exhibit-related activities may be available upon request.

### Sankofa: African Americans in Rhode Island

*Sankofa* is a term from the West African Akan language meaning "going back to the past in order to move forward." Evoking that concept, *Sankofa* focuses on the many cultures of West Africa whose people were brought to Rhode Island by the transatlantic slave trade. The program also explores the role of slavery around the world, the experiences of enslaved Africans in Rhode Island, the roles of Rhode Islanders in ending slavery, and the contributions African Americans have made and continue to make in our society. Students will handle objects from our African collections and try musical instruments.



**New lesson plan available on our web site!**

K-12 Curriculum Standards/Frameworks:

Rhode Island:

**Civics & Government:** C&G5(K-8)-1; C&G5(K-8)-2 **Historical Perspectives:** HP1(K-8)-1; HP2(K-8)-1; HP2(K-8)-2; HP2(K-8)-3; HP3(3-8)-1; HP3(K-8)-2 **Visual Art and Design:** VAD2(K-8)-1 **Music:** M2(K-8)-2; M2(5-6)-2

Massachusetts:

**Social Science:** (Gr. 4): 4.15B; (Gr. 5): 5.12 **Arts (Gr. 4):** Visual Arts: Standard 5; Music: Standard 3; 5.2

**The information along with the objects brought for the students to handle was very interesting as well as engaging, including the final print activity.**

5th grade teacher  
Oldham School, East Providence, RI



**There was a good mixture of information and hands-on activities. It was more than I anticipated. The students really enjoyed themselves and learned a great deal.**

6th grade teacher  
Glen Hill School, Cranston, RI

### Dig It!

#### Discovering Archaeology

How do we know about the cultures of the past? Dig It! brings an archaeological site to you for a down and dirty exploration of archaeology. Your students will participate in a simulated dig during which they will find a variety of artifacts, leading them to discover the history of New England's Native people. After their investigation, your students will report on their findings and the class will reconstruct what the site looked like in the past. Take this opportunity to give your students a unique experience using scientific inquiry to understand the past. Free lesson plan available on our web site.



K-12 Curriculum Standards/Frameworks:

Rhode Island:

**Historical Perspectives:** HP 1 (K-8) -1; HP 2 (K-4) -3; HP 3 (K-4) -2 **Earth and Space Science:** ESS1 (K-6)-1 **Life Science:** LS1 (K-4)-1 **Reading:** (4-8) R-2; R-3; R-4; R-5; R-7; R-8; R-11; R-13; R-16 **Writing:** (4-8) W-1; W-2; W-3; W-6; W-8; W-9; W-10 **Oral Communication:** (4-8) OC-1; OC-2 **Mathematics:** M(N&O)-(4-6)-3; M(N&O)-(4-6)-4; M(N&O)-(4-8)-7; M(G&M)-(4-6)-7 **Visual Arts & Design:** VAD 1 (4-8)-1 a&c, VAD 4 (5-6)-1 b&c

Massachusetts:

**Social Science:** Gr. 7 concept 6 **Arts:** Visual Arts: 5.1 **Science and Technology (3-5):** Life Sciences: 8&10; Physical Sciences: 1 **English Language Arts (5-8):** General Standards 1, 2, 3, 4, 8, 13, 19, 23, 24, 25 **Mathematics:** Number Sense and Operation: 4.N.5, 6.N.5; Measurement: 4.M.1, 4.M.5, 8.M.1

### Culture Connect: Experience the Cultures of the World

In this interactive program your students will travel the world with amazing objects from our collections to explore cultures of today and yesterday through clothing, food, shelter, religion, music, and art. Your students will become citizens of the world as they learn how similar and how exciting their cultural differences can be.

We will bring objects from Africa, Asia, Europe, and North and South America to your classroom, turning it into a kaleidoscope of diversity and a multicultural laboratory for teaching inquiry-based lessons about tolerance and respect. Free lesson plan available on our web site.



K-12 Curriculum Standards/Frameworks:

Rhode Island:

**Civics & Government:** C&G5(K-6)-1; C&G5(K-6)-2 **Historical Perspectives:** HP1(K-8)-1; HP2(K-4)-3; HP3(K-8)-2 **Engineering and Technology:** ET1.1(K-8); ET1.2(K-4); ET2.2(K-4) **Reading:** (3-8) R-3; R-7; R-11; R-13 **Writing:** (3-8) W-1; W-2; W-3; W-6; W-7; W-8; W-9; W-10; W-11 **Oral Communication:** (3-8) OC-1; OC-2 **Dance:** D2(K-8)-1 **Music:** M2(K-8)-1; M2(K-12)-2 **Theater:** T2(K-8)-1 **Visual Arts & Design:** VAD2(K-8)-1; VAD3(K-8)-2 VAD3(K-8)-1c,d

Massachusetts:

**Social Science: Economics (Gr. 4):** 7, 4.15E **Arts (K-4):** Visual Arts: 1.1, 1.2, 3.3, 4.1, 4.2, 5.1, 5.2, 5.3 **Arts (5-8):** Visual Arts: 3.5, 3.6, 3.7, 5.6 **Science and Technology (K-2):** Life Sciences: 1, 6, 8; Technology/Engineering: 1.1, 1.2, 2.1, 2.2 **Science and Technology (3-5):** Life Sciences: 8&10; Technology/Engineering: 2.1 **English Language Arts (3-8):** General Standards 3, 8, 19, 23, 24.

**The children were very interested in learning about other cultures and some were excited to hear about their own background.**

5th grade teacher  
Pleasant View School, Providence, RI





It was a wonderful experience and a perfect supplement to my program. It certainly brought my program to life.

3rd grade teacher  
Greystone School, North Providence, RI

### Native People of Southeastern New England

In this exciting program, your students will learn how the early people of New England lived and used the resources available in their environment. Students will examine a model wetu, arrows and other tools, grind corn, and much more. Your students will investigate cultural differences between the English settlers and the Native people, and will understand how Native people adapted and changed through time. Then, we move forward to discuss and explore today's pow-wow. Participants will practice drumming, examine real pow-wow regalia, and try a social dance while learning how the Native People of Southeastern New England celebrate their heritage today.

K-12 Curriculum Standards/Frameworks:

**Rhode Island:**  
**Civics & Government:** C&G5(7-8)-1; C&G5(K-8)-2 **Historical Perspectives:** HP1(K-8)-1; HP2(K-8)-1; HP2(3-8)-2; HP2(K-8)-3; HP3(3-8)-1; HP3(K-8)-2 **Engineering and Technology:** ET1.1(K-8); ET1.2(K-4) **Reading:** (3-8) R-3; R-7; R-8; R-11; R-13 **Writing:** (3-8) W-1; W-2; W-3; W-6; W-7; W-8; W-9; W-10; W-11 **Oral Communication:** (3-8) OC-1; OC-2 **Dance:** D2(K-8)-1 **Music:** M2(K-8)-1; M2(5-6)-2

**Massachusetts:**  
**Social Science (Gr. 3):** 3.2., 4.15A **Economics (Gr. 4):** 6&7, 4.11, 4.15E; (Gr. 5): 5.6 **Arts (K-4):** Dance: 1.3, 1.6, 1.7, 4.1, 5.1 **Science and Technology (K-2):** Life Sciences: 1, 6, 8; **Technology/Engineering:** 1.1, 1.2, 2.1, 2.2 **Science and Technology (3-5):** Life Sciences: 8&10; **Technology/Engineering:** 2.1 **English Language Arts (Gr. 3-8):** General Standards 3, 8, 19, 23, 24.

### Indigenous People of Central America

The program begins with an exploration of the ancient civilizations of the Toltecs, Olmecs, Aztecs and Maya. With a focus on the Maya, students learn about environmental and cultural changes that occurred before the arrival of the Spanish conquistadors. As students examine artifacts from today and yesterday, they will understand how the Maya live today and the traditions they continue to keep. We end with a discussion of the issues the Indigenous people of Central America face within their existing governments, and the experiences of Central American immigrants in Rhode Island.

K-12 Curriculum Standards/Frameworks:

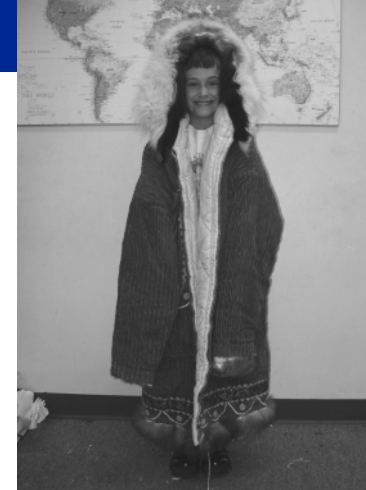
**Rhode Island:**  
**Civics & Government:** C&G5(7-8)-1; C&G5(K-8)-2 **Historical Perspectives:** HP1(K-8)-1; HP2(5-8)-2; HP2(K-8)-3; HP3(5-6)-1; HP3(K-8)-2 **Engineering and Technology:** ET1.1(K-8); ET1.2(K-4) **Visual Art and Design:** VAD2(K-8)-1; VAD3(5-8)-2

**Massachusetts:**  
**Social Science (Gr. 4):** 4.24; 4.25; 4.28; (Gr. 5): 5.2 **Science and Technology (K-2):** Life Sciences 1, 6, 8; (3-5) 8&10 **Arts (Gr. 4):** Visual Arts: Standards 1, 5



The program was well presented and helps students focus on cultural diversity.

5th grade teacher  
Pleasant View School, Providence, RI



### Native People of The Arctic

How have people survived and thrived in the Arctic's harsh environment for thousands of years? Find out in this fascinating program featuring the Yup'ik and Inupiaq people of Alaska. Students will feel real seal, bear, and musk ox skins, examine baleen from a whale's mouth, try on a parka and play traditional games that made children strong hunters. Students will learn traditions that the people of the Arctic use today to maintain their cultures and use their resources wisely. Students will also investigate how global warming has affected coastal villages and the hunting economy.

K-12 Curriculum Standards/Frameworks:

**Rhode Island:**  
**Civics & Government:** C&G5(7-8)-2; C&G5(K-4)-2 **Historical Perspectives:** HP1(K-8)-1; HP2(5-8)-2; HP2(K-8)-3; HP3(5-6)-1; HP3(K-8)-2 **Engineering and Technology:** ET1.1(K-8); ET1.2(K-4)

**Massachusetts:**  
**Social Science (Gr. 4)** 4.15A: Economics 6&7, 4.11, 4.15E; (Gr. 5): 5.6 **Arts (K-4):** Theater 1.1 **Science and Technology (K-2):** Life Sciences: 1,6,8; Technology/ Engineering: 1.1, 1.2, 2.1, 2.2 **Science & Technology (3-5):** Life Sciences: 8&10; Technology/ Engineering: 2.1

Your program tied together everything we learn about in our Arctic Program — giving us hands-on experience to supplement our unit.

4th Grade Teacher  
Lincoln Central Elementary School, Lincoln, RI



### Native People of the Plains

Let us help you to explore life on the Plains "then and now." Your students will gain an understanding of the importance of the American buffalo, or bison, to the survival of the early Native people of the Plains. Students can touch real buffalo fur, hoofs, and tools made of buffalo bone, and make and try a snack of pemmican. Students will learn about cultural changes brought by the reservation system, examine the beautiful beadwork of Plains women, and study how the Plains people today incorporate early traditions into their contemporary lives.

K-12 Curriculum Standards/Frameworks:

**Rhode Island:**  
**Civics & Government:** C&G5(K-8)-2 **Historical Perspectives:** HP1(K-8)-1; HP2(5-8)-2; HP2(K-8)-3; HP3(5-6)-1; HP3(K-8)-2 **Engineering and Technology:** ET1.1(K-8); ET1.2(K-4) **Reading:** (3-8): R-3; R-7; R-8; R-11; R-13 **Writing:** (3-8) W-1; W-2; W-3; W-6; W-7; W-8; W-9; W-10; W-11 **Oral Communication:** (3-8) OC-1; OC-2 **Visual Art and Design:** VAD2(K-8)-1; VAD3(5-8)-2 **Dance:** D2(K-8)-1

**Massachusetts:**  
**Social Science (Gr. 3):** 3.2., 4.15A **Economics (Gr. 4):** 6&7, 4.11, 4.15E; (Gr. 5): 5.6 **Arts (K-4):** Dance: 1.3, 1.6, 1.7, 4.1, 5.1 **Science and Technology (K-2):** Life Sciences: 1, 6, 8; **Technology/Engineering:** 1.1, 1.2, 2.1, 2.2 **Science and Technology (3-5):** Life Sciences: 8&10; **Technology/Engineering:** 2.1 **English Language Arts (Gr. 3-8):** General Standards 3, 8, 19, 23, 24.

The Activities match curriculum and frameworks in an enjoyable educational atmosphere. You have a great program which is age appropriate with a variety of informational activities and engaging, hands-on learning was encouraged.

1st grade teacher  
Hoyle School, Swansea, MA



The presenter was able to adapt the program for all ages. We enjoyed the program. It was interesting for the students and kept them engaged. Thank you for visiting our school!

K-12 program teacher  
South Shore School, Wakefield, RI

### Native People of the Southwest: The Hopi

Did you know that many Hopi still live in the pueblos their ancestors built on desert mesas hundreds of years ago? Your students will explore Hopi culture in this interactive, hands-on presentation using pottery, baskets, clothing and other materials from the Haffenreffer Museum's legendary collections. Students will learn about ancestral traditions still observed in modern Hopi communities. Students will discover the surprising resources available in the desert, how the Hopi use them and Hopi beliefs about their world. Your students will also learn how the Hopi name their children and will participate in a social dance.

K-12 Curriculum Standards/Frameworks:

**Rhode Island:**  
**Civics & Government:** C&G5(7-8)-1; C&G5(K-4)-2 **Historical Perspectives:** HP1(K-8)-1; HP2(5-8)-2; HP2(K-8)-3; HP3(5-6)-1; HP3(K-8)-2 **Engineering and Technology:** ET1.1(K-8); ET1.2(K-4) **Dance:** D2(K-8)-1 **Music:** M2(K-8)-1; M2(5-6)-2

**Massachusetts:**  
**Social Science (Gr. 4):** 4.24; 4.25; 4.28; (Gr. 5): 5.2 **Science and Technology (K-2):** Life Sciences 1, 6, 8; (3-5) 8&10 **Arts (Gr. 4):** Visual Arts: Standards 1, 5

