

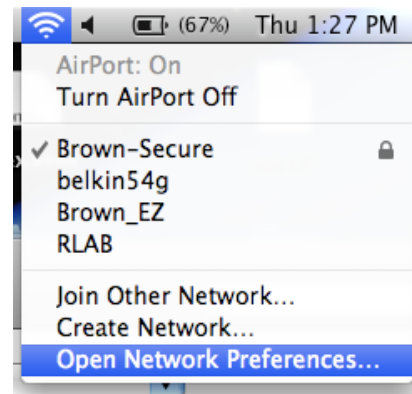
## For OSX 10.5.2 +(Leopard)

### \*Before beginning, follow these steps to clear all previously created Brown-Secure settings

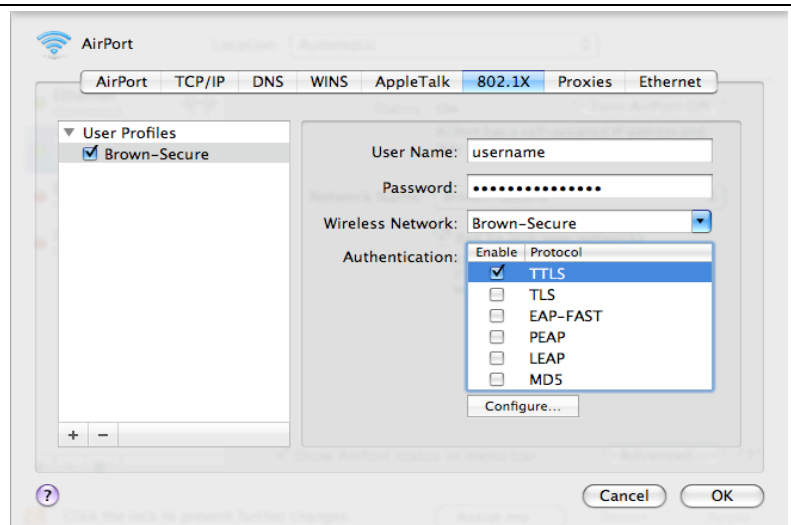
- Begin by switching your wireless network to the “Brown\_EZ” wireless network. This will stop Brown-Secure from attempting to authenticate while you perform these steps.
- Open Keychain Access, go to: Applications>Utilities>Keychain Access. Double click the icon and the window will open displaying the contents of the keychain.
- **You will need to delete any items in Keychain Access which contain Brown-Secure.**
- Once you’ve deleted these items, go to the Airport icon and click on Open Network Preferences and then click on the Advanced tab and then the 802.1x tab.
- **Click on User Profiles and delete all the existing profiles which contain Brown-Secure** by highlighting them and clicking on the minus button at the bottom of the window.
- Once deleted, hit OK and then Apply in the Network window.
- You can now set-up a new Brown-Secure user profile by following the steps below..

*Before following the instructions below, make sure your wireless driver is up to date. To do this, run "Software Update."  
You can select **Software Update** from the Apple menu in the upper left corner of your desktop.*

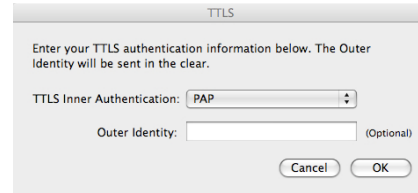
1. Be sure to clear any previously created Brown-Secure entries according to the steps above. Click on the Airport icon in the top right-hand corner of the desktop and choose **Open Network Preferences** from the **Drop-down** menu.



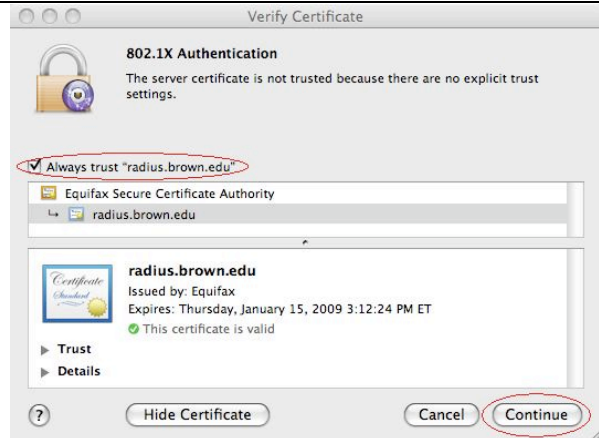
2. In the Network panel choose **Automatic** from the Location drop-down, select Airport from the list of devices on the left. Click the **Advanced** button, then select the **802.1X** tab. At the bottom of the 802.1x page, click on the Plus + sign to create a User Profile, and name it Brown-Secure. Enter your Brown username and password for the User Profile. Choose Brown-Secure from the **Wireless Network** drop-down menu. Under **Authentication**, uncheck everything except **TTLS**, highlight TTLS and then click the **Configure** button.



3. Set TTLS Inner Authentication to **PAP** and leave Outer Identity empty. Save the configuration change by clicking **OK**, then click **Apply** to finalize the Brown-Secure setup. Select Airport from the left pane and Brown-Secure from the Network Name Drop-down.



4. If the Certificate window appears Click **Show Certificate**, set the trust settings to **Always Trust** for "radius.brown.edu" and click **Continue**.



5. You may be presented with two dialog boxes requiring you to enter your **Mac** username and password. Enter this information to save the certificate and trust settings.

**Note: One box will be evident, the other may be hidden behind the View Certificate window.**

Click OK on these windows.

You should now be able to connect to the Brown-Secure Wireless network.

If you need further assistance, please call the Help Desk at 863-4357.

