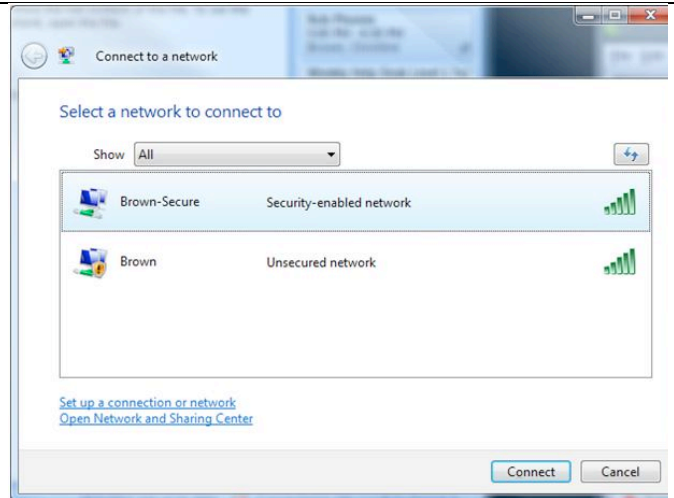
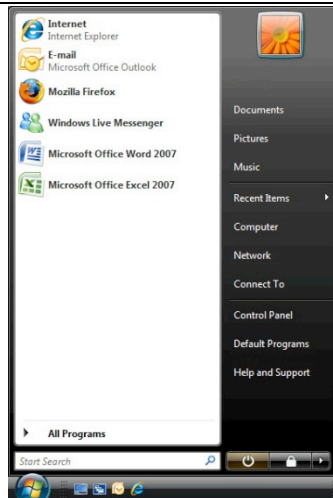


# Brown-Secure Wireless with Windows Vista

**Download and Install Secure W2** located in the Windows tab at: <http://software.brown.edu> prior to using this setup.

1. Navigate to the **Connect To** screen through the Windows Start Menu. Select Brown-Secure from the list of available wireless networks and click **Connect**.



2. After selecting Brown-Secure, the "Connect to a network" window will appear. Click on the dialog option to **Enter/select additional log on information**.



3. Enter your Brown **username** and **password** in the SecureW2 log in screen and click "OK." You will be notified that you have successfully connected to Brown at which point you can close the Connect to a secure network dialog box.



4. CIS recommends you chose **Public location** in the "Select a location" dialogue box as it is the most secure. After making this selection, click **Close** to begin using Brown-Secure wireless. It is recommended that you disconnect from the Brown-Secure wireless network when you are finished using the service. To do so, go to the Start menu and select "Connect To" again. Click on the "Disconnect" button to end your Brown-Secure session.

