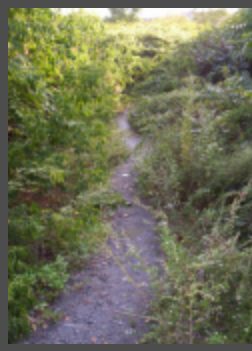


arch 1600. archaeologies of the near east  
joukowsky institute for archaeology and the ancient world  
spring 2008

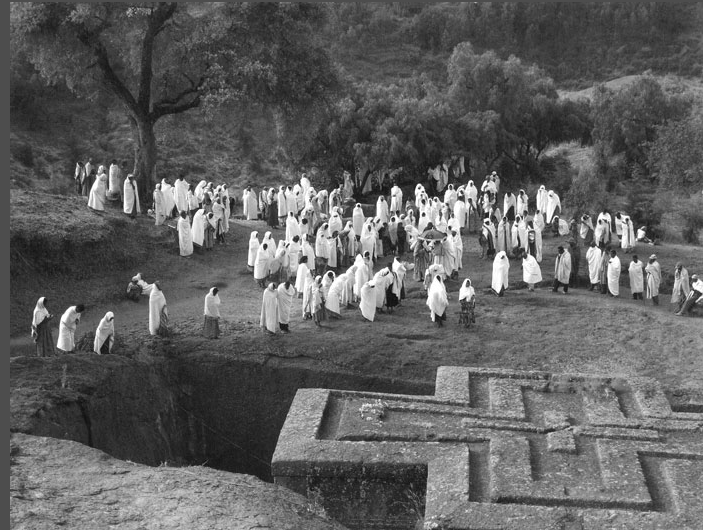


archaeology and the presence of the past  
January 28, 2008



industrial ruins of providence new, creative uses to abandoned spaces





Orthodox Christian rock cut churches of Lalibela, Ethiopia (12<sup>th</sup>- 13<sup>th</sup> centuries)  
and the contemporary worshippers  
the long-term presence of cult places





Mussolini and the "healing pick"  
modernism and the monumentalization of the ancient past



The contested past in 20<sup>th</sup> century Rome: modernism and the monumentalization of the ancient past



The contested past in the acropolis at Athens, Greece:  
modernism and the monumentalization of the classical past, silencing of the rest

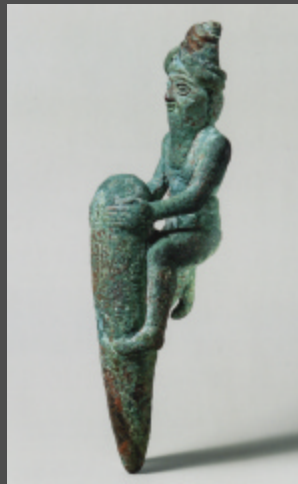
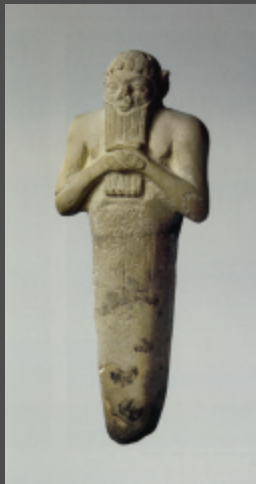


Ankara: the contemporary ancient past



An Early Bronze age ritual standard, Alacahoyuk, Turkey





Foundation deposits of ancient Mesopotamia records of construction, buried for "future generations"



**The king as builder**  
Foundation figurine of Ur-Namma  
(2047-2030 BC)



Wall plaque- Ur-Nanše and family.  
Limestone w/ cuneiform inscription  
Girsu (modern Tello), Southern Iraq  
Early Dynastic IIIA 2550-2400 BC

THE FIRST FOSSIL HUNTERS



Adrienne Mayor

PALEONTOLOGY IN GREEK AND ROMAN TIMES

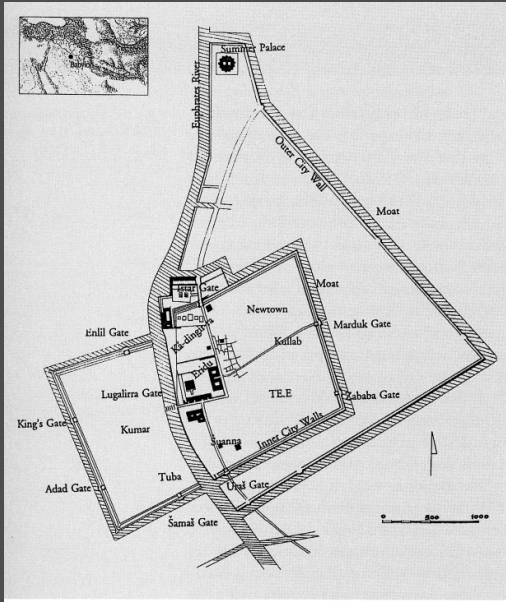


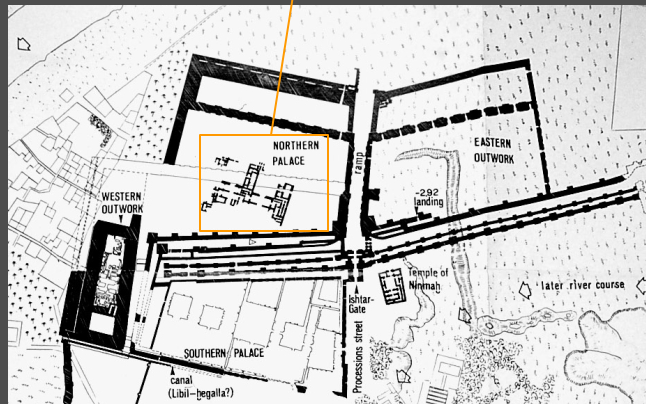
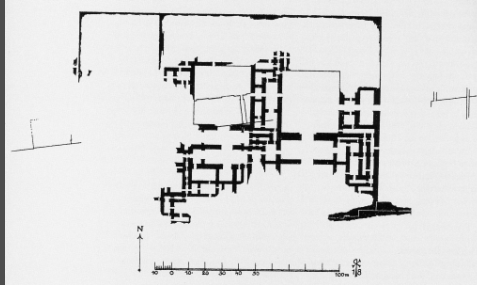
Corinthian helmet

From Apulia, ca 510 BC

(British Museum GR 1865.7-22.1 (Cat. Bronzes 2838))

Babylon = TIN.TIR<sup>KI</sup>





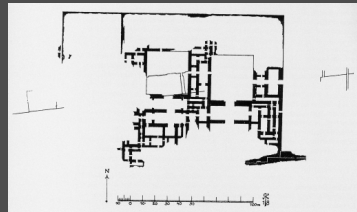


Abb. 3. Die vier Mari-Gates von Babylon.

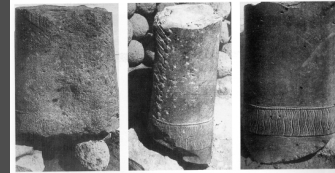


Abb. 46. Stele mit Darstellung des Wettergottes

Early Iron Age Stele of the Storm God from North Syria, Found in the "museum: in Babylon



Abb. 47. Relief des Schamsch-erach-umar (Apsal)



Old Babylonian royal statues from Mari, Found in the "museum: in Babylon

**Memory p(a)laces:**  
Babylon's ancient "museum" and its "antiquities"



92 The Hanging Gardens of Babylon (Kalmeyer's reconstruction)

### Hanging Gardens of Babylon

idea of paradeisos: exotic royal garden in the ancient Near East?



**Memory p(a)laces:**  
Modern archaeological/ethnographic museum and  
its objects



**Cabinet of curiosities**  
Musei Wormiani Historia



**Modern display of material culture**  
The ethnographic museum

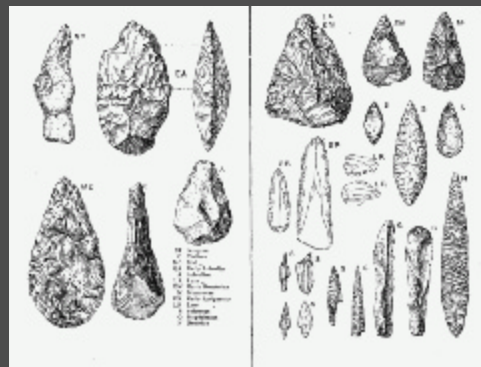
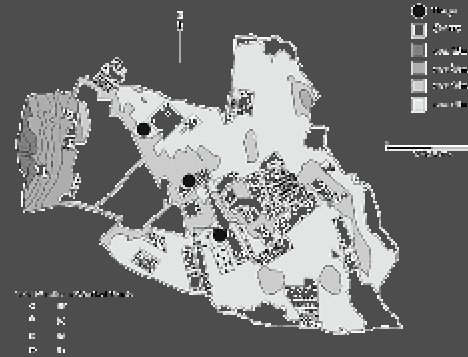


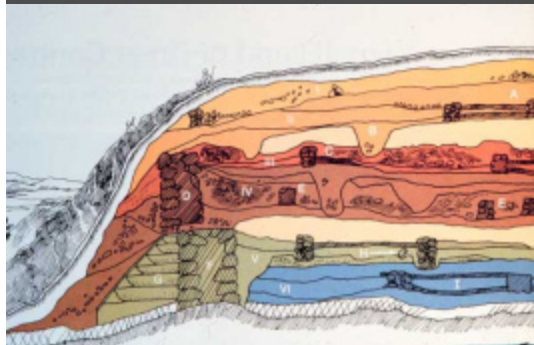
Figure 9.4 : Lithics

Archaeological typologies lithics



CERN  
 CERN  
 CERN  
 CERN  
 CERN

**Distribution maps** mapping artifacts



**Stratigraphy** the specific time and space of artifacts