

18 Sept 2006

FBC-A1/1

J. Berthiaume, J. Carabeis, C. Rocca

We took off the first lot (10 cm) in FBC-A1. We removed and sifted through grass. We worked on the north- and south-east section of the unit (most uphill part of unit), taking it down to 10 cm. The final depths were taken from a datum point at northeast stake of the unit.

NE: 12 cm

NW: 23 cm

SE: 15 cm

SW: 28 cm

We found 9 pieces of glass (2 of which colored, 1 with text "H... DA[R?]" embossed), 2 pieces of cylindrical-shaped unknown material (possibly stakes?) and 1 piece of lithic, possibly worked.

25 September 2006

FBC-A1/2

J. Berthiaume, A. Bravo

We worked primarily on lot 2, taking the unit down to 20 cm depth from the datum point. Artifacts from this level include 10 shards of glass (one with a raised "R"); 4 pieces rusted metal wire; 3 pieces anthracite; 5 pieces ceramics, including a piece of polychrome glazed (looks like a bowl base or foot); 4 pieces of cylindrical unknown material, tapered at the end in some cases; 1 piece stone or ceramic (unknown which is threaded).

We reached the end of lot 2 with depths:

NE: 18 cm

NW: 22 cm

SE: 17 cm

SW: 28 cm

center: 21 cm

25 Sept 2006

FBC-A1/3

J. Berthiaume, A. Bravo

We began the third lot, Lot 3. We will be digging to a depth of 30 cm bdp, finally able to remove soil from all corners of the unit. We have found, so far:

9 pieces clear glass; 3 pieces cylindrical of unknown material; 1 rusty nail; 1 anthracite
1 sherd glazed ceramic; 1 pencil eraser top.

Also, we found ~~the~~ an intact bottle neck, made of clear glass, which we will excavate next week. We covered it and marked it with a large flat rock.

2 Oct 2006

FBC A1-3

J. Berthiaume R. Tadenev

Initial depth measurements

NE: 20.5 cm

SE: 22 cm

NW: 22 cm

SW: 26 cm

bottle neck: 22 cm depth

- location: 60 cm west of datum

20 cm south of datum

Lot 3 has been taken down, because of the appearance of a natural layer, which will be Lot 4.

We've found:

10 pieces unknown material cylinders (chalk)

2~~1~~ pieces of glass, 1 green, 2 milky white, 1 diagnostic

14 nails

1 piece unknown (possibly pencil or ceramic)

2 candy wrappers (possibly diagnostic)

4 pieces metal

1 piece cement fragment?

1 piece charcoal

1 piece anthrusite

We will complete the paperwork next day
on site.

10/16/06

FBC A1/? - level 4

ADAM + ADAM are attempting to determine the level and such - when we find a tape measure marked in centimeters.

- Raddy showed up -

Level 4 - 25 cm to

the pit was quartered, and the North east corner .75 x .75 has continued excavation.

The stake in the center of the pit encountered resistance, so it was not pounded in all the way.

This layer ended in 2 colors of soil at the bottom, to be divided into layers 5 + and 6 - white clay on the west and dark brown on the east, roughly in the middle.

2 pieces of brick found + lots of rocks.

on deeper consideration, it turns out
the clay stuff ran across the
entire pit - which is good.

Deepest point - 43 cm, highest now 38

One piece of greenish glass found.

Kate believes it was thrown or spun
glass.

FBC - A1/5

38 cm to 48 cm

Quick excavation, despite the
rocks, pebbles + ~~so~~ hard clay
we didn't quite clear the level

Completely - LOT FORM

NOT quite finished

No Artifacts found

CLA
Time:
Mond
Tuesd
Wedn
Thurs
Frida
Satur

FBC-A1/5 and /6

A. Eisman and J. Berthiaume cleaned, finished and photographed level 5.

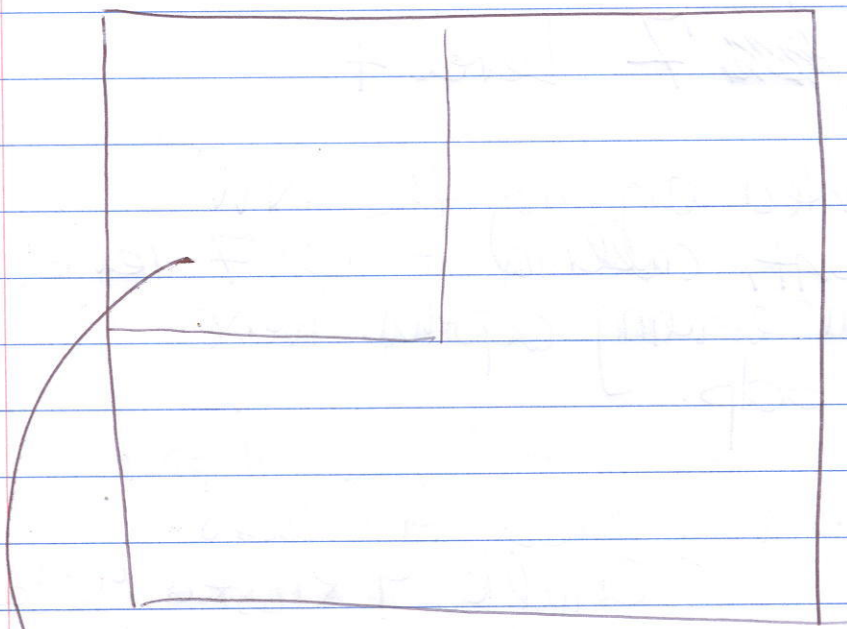
W
G
Cer
wy

We will follow with lot 6 and our depth below datum is 50 cm.

CM
C
el
E
I
b

~~We~~ We have hit what Dr. Nelson observed to be sterile soil. We will bring the level down to 60 cm and then work on the other ~~#~~ 3 quarters of the unit, starting with NW. The soil we are currently observing is gray, packed clay filled with very gritty rocky deposits and small stones. Around 53 cm, we hit ~~3~~ 4 large ^{rocks} 15 x 10 cms on average.

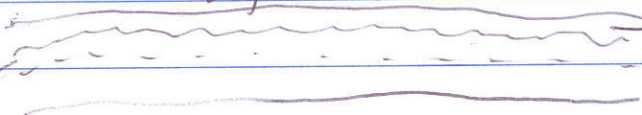
We went through a level of silty yellow perhaps 2 cm thick, after which was the layer of gray, rocky packed clay.



dark brown



lighter brown



white packed clay

yellow silt

gray packed clay (sterile)

FBCA1 ~~Lot~~ 7 Level 4

We started digging the NW quadrant, calling it Lot 7 level 4. Our ending depths were 40 cm bdp.

We found 2 shell 4 Glass.
2 Chalk 9 Rusted Metal
1 brick fragment

FBC A1

Continuing digging & attempting to use stratigraphic layers

Started digging in NW corner, initial measurements

were 35cm. NE corner's initial measurements were

59cm at higher point & 63cm

Lot 8 = NW corner (corresponds to 35cm)

- will be bringing it down to 40cm level lot.

- after digging approximately 3 cm, we encounter a soil change.

Lot 9 = NW corner

- begins with soil change.

- stopped digging at 43cm

FBC-A1

11/20

Today we completed the east & north wall
profile views.