

Senwosret I's White Chapel at Karnak



Michael Bohl



Hatshepsut's Red Chapel at Karnak



Pillars of the White Chapel



Listing of the nomes along the bottom of the outside of the White Chapel



The extremely high quality relief at the White Chapel

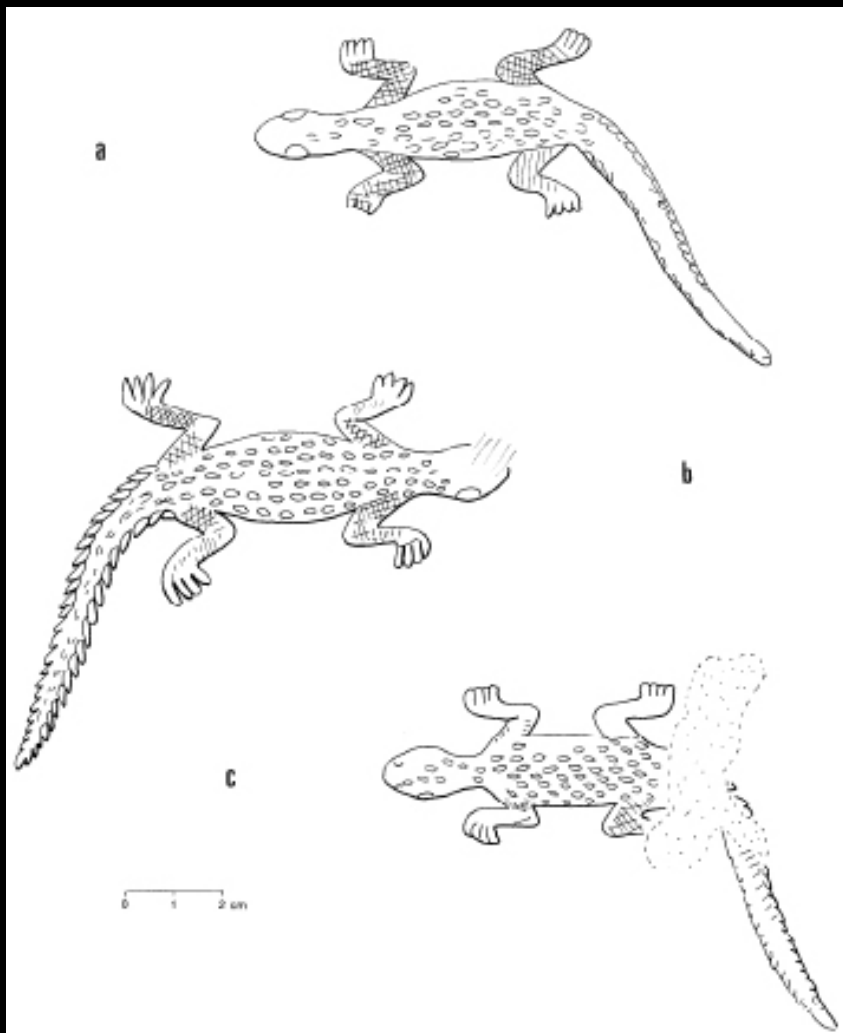
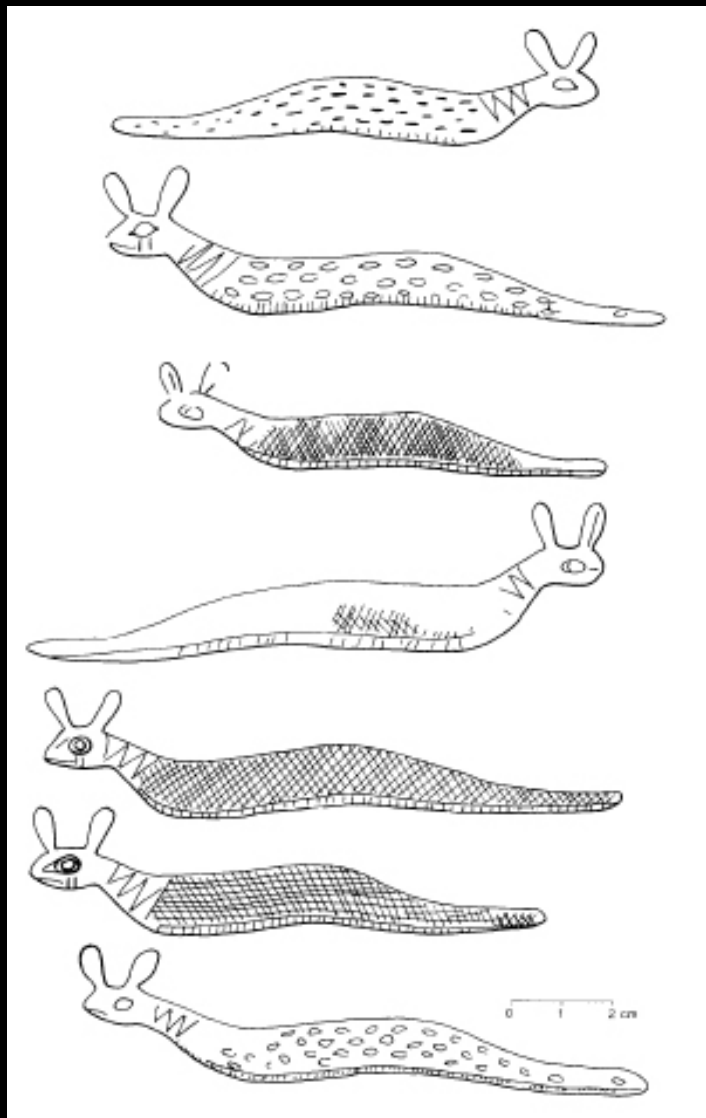


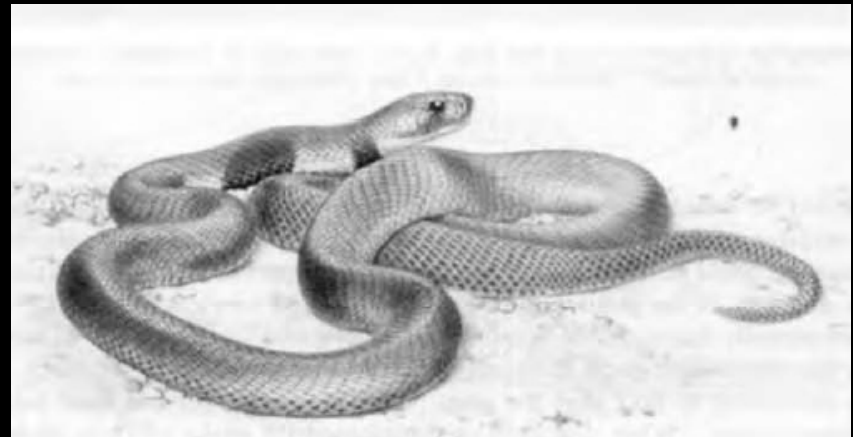
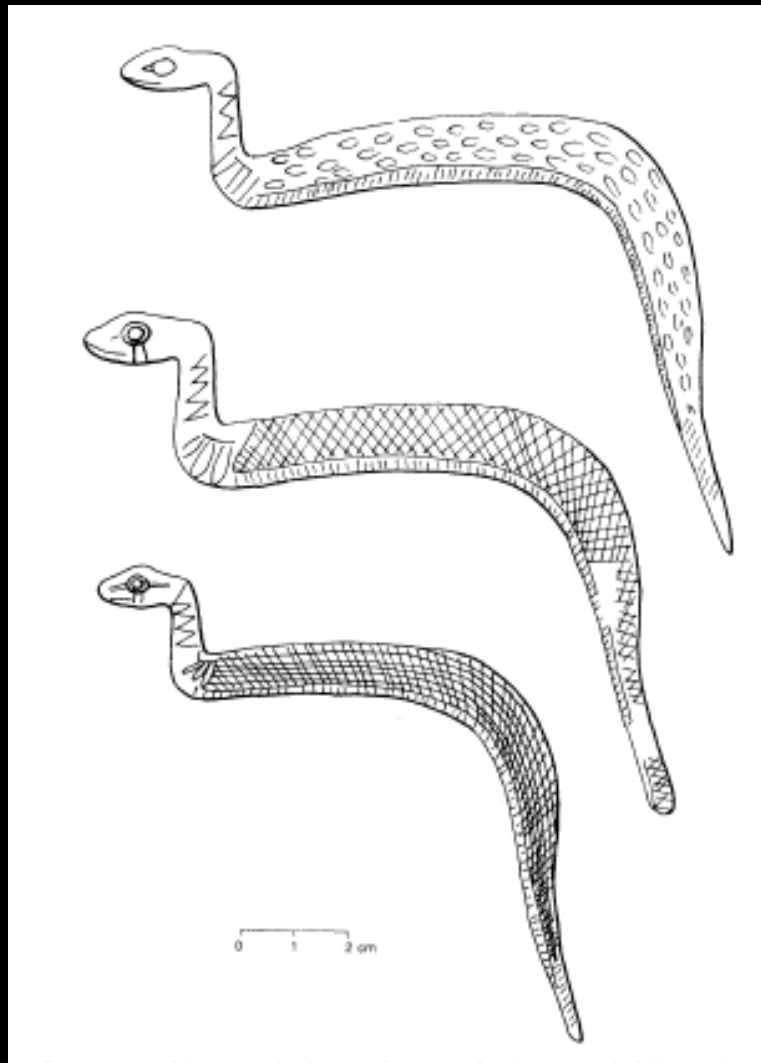
Fig. 2. — Illustration of *Uromastix aegyptius* from Anderson, o.c., pl. XIV.



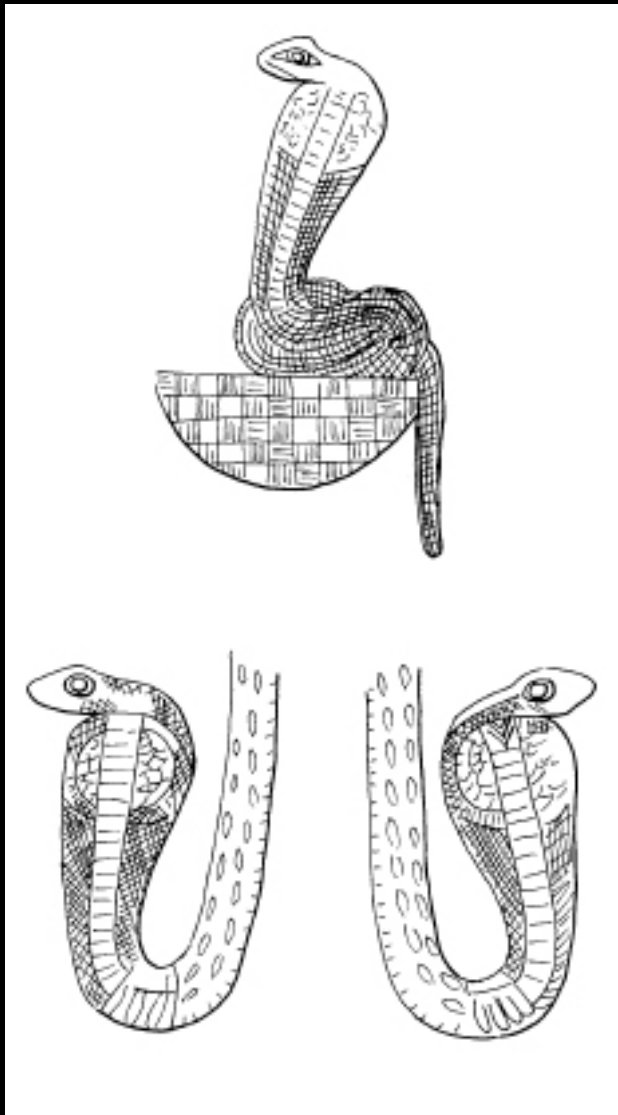
I 1 (*Uromastix* lizard)



I 9 (Horned Viper)



I 10 (Spitting Cobra)



I 12 (Egyptian Cobra)

Royal Jewelry from Dahshur and Lahun



Crown of King's Daughter Sithathoriunet, from
Her Tomb within the Pyramid Complex of
Senwosret II at Lahun

Cairo CG 52641

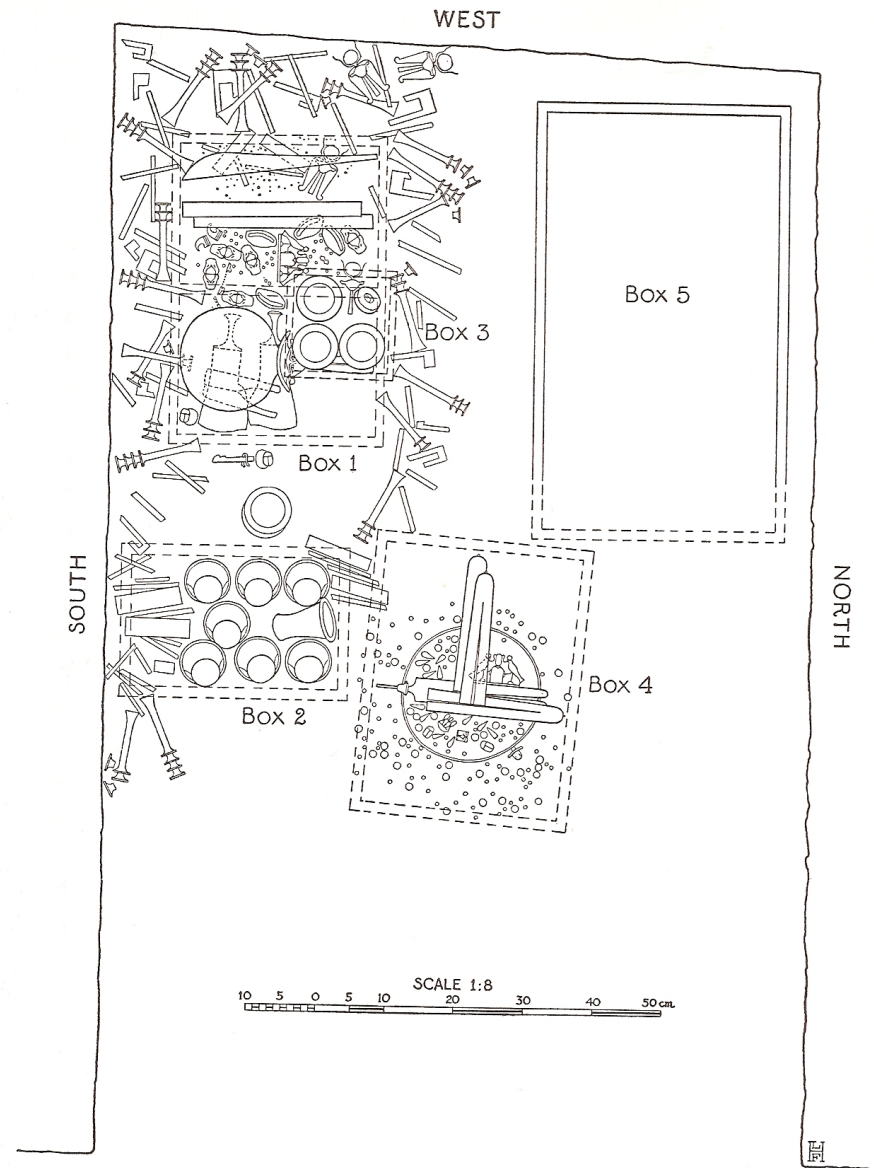


FIGURE 2
PLAN OF THE RECESS WITH THE TREASURE AS FOUND
(REDRAWN FROM BRUNTON, "LAHUN I," PL. XII)

Emily Russo



Jewelry chest of Sithathoriunet
Lahun
MMA

Newspaper illustration of De Morgan
discovering treasure of Dahshur
princesses





Amethyst and gold bracelets, anklets, and girdle from jewelry chest of Sithathoriunet at Senwosret II's Lahun pyramid
MMA



Turquoise, lapis lazuli, carnelian, and gold necklace, bracelets, and amuletic motto clasps from cache of Mereret at Senwosret III's Dahshur pyramid
Egyptian Museum, Cairo



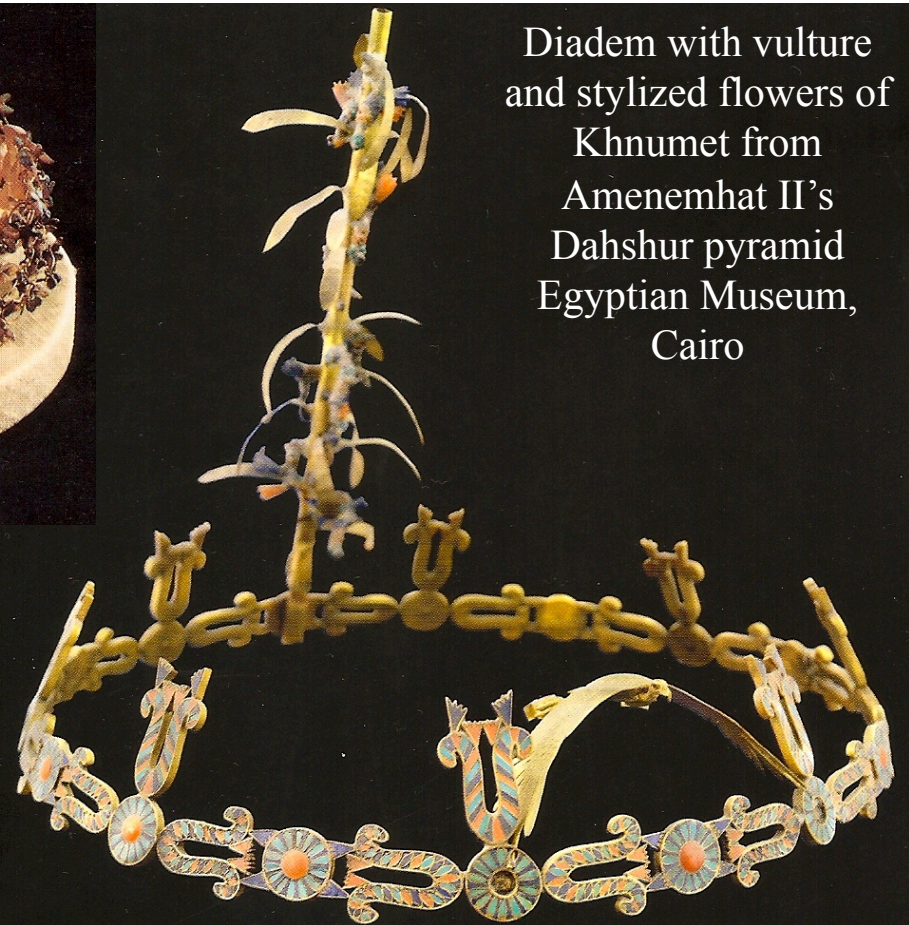
Turquoise, faience, and gold leaf (reconstructed in gilt silver and brass) broad collar of Senebtisi from her shaft tomb at Lisht (late Dyn. 12 – early Dyn. 13)
MMA

Bracelets and girdle of Queen Weret
from Senwosret III's pyramid
complex at Dahshur





Gold-wire flower diadem of Khnumet
Egyptian Museum, Cairo



Diadem with vulture
and stylized flowers of
Khnumet from
Amenemhat II's
Dahshur pyramid
Egyptian Museum,
Cairo





Cloisonné pectoral of Sithathoriunet in gold, feldspar, carnelian and turquoise in a heraldic design of the throne name of Senwosret II

MMA

Pectoral of Mereret with name of Senwosret III from Dahshur



Tomb of Senwosret III

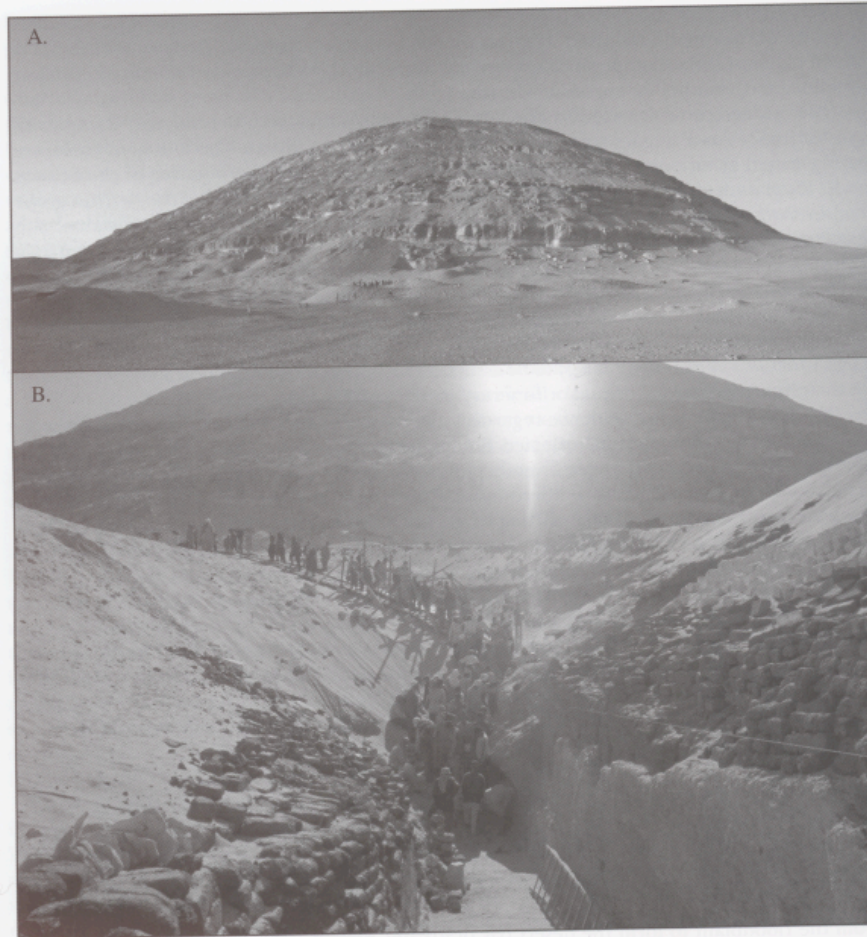


Fig. 5. View of the pyramidal form of the gebel above the location of the Senwosret III tomb enclosure (a); and view of the rock-cut trench with gebel rising behind during 2005 excavations (b).

Peter Johnson 4-18-11

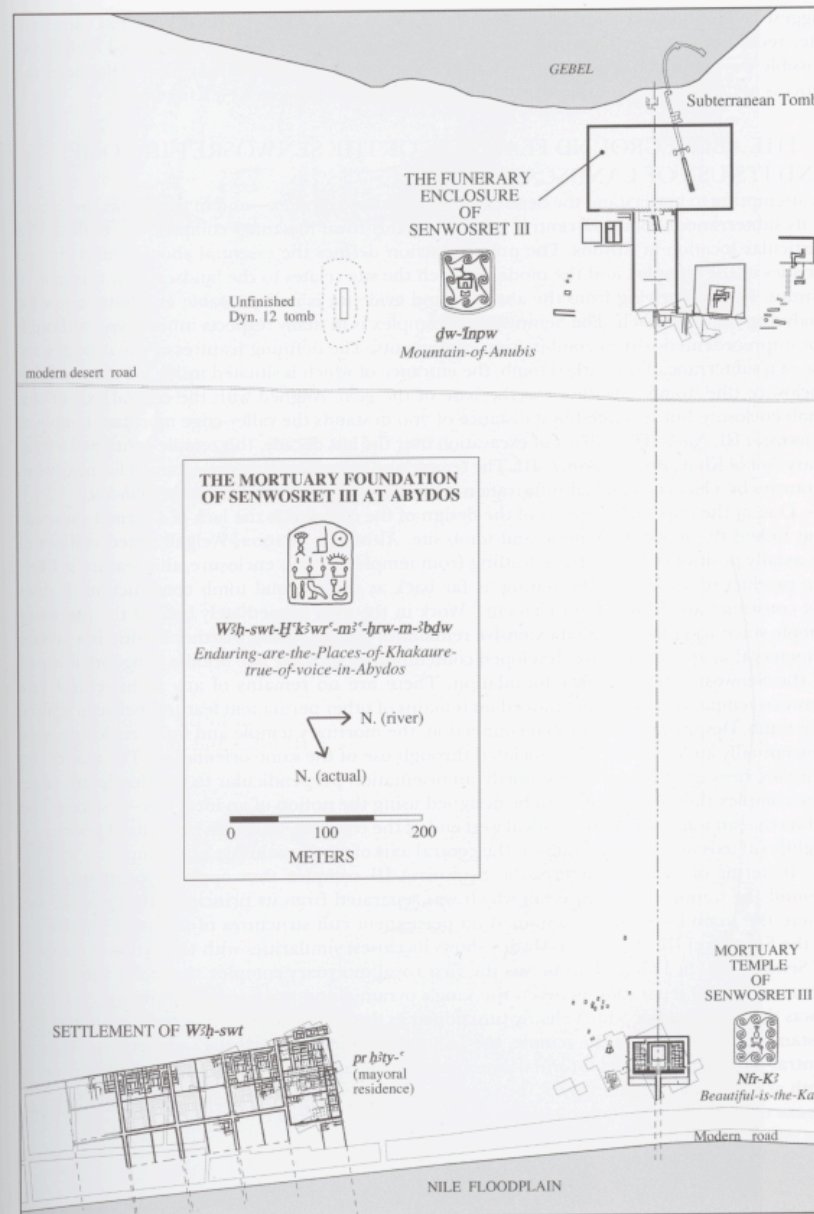


Fig. 2. Plan showing the major features of the Senwosret III mortuary complex.

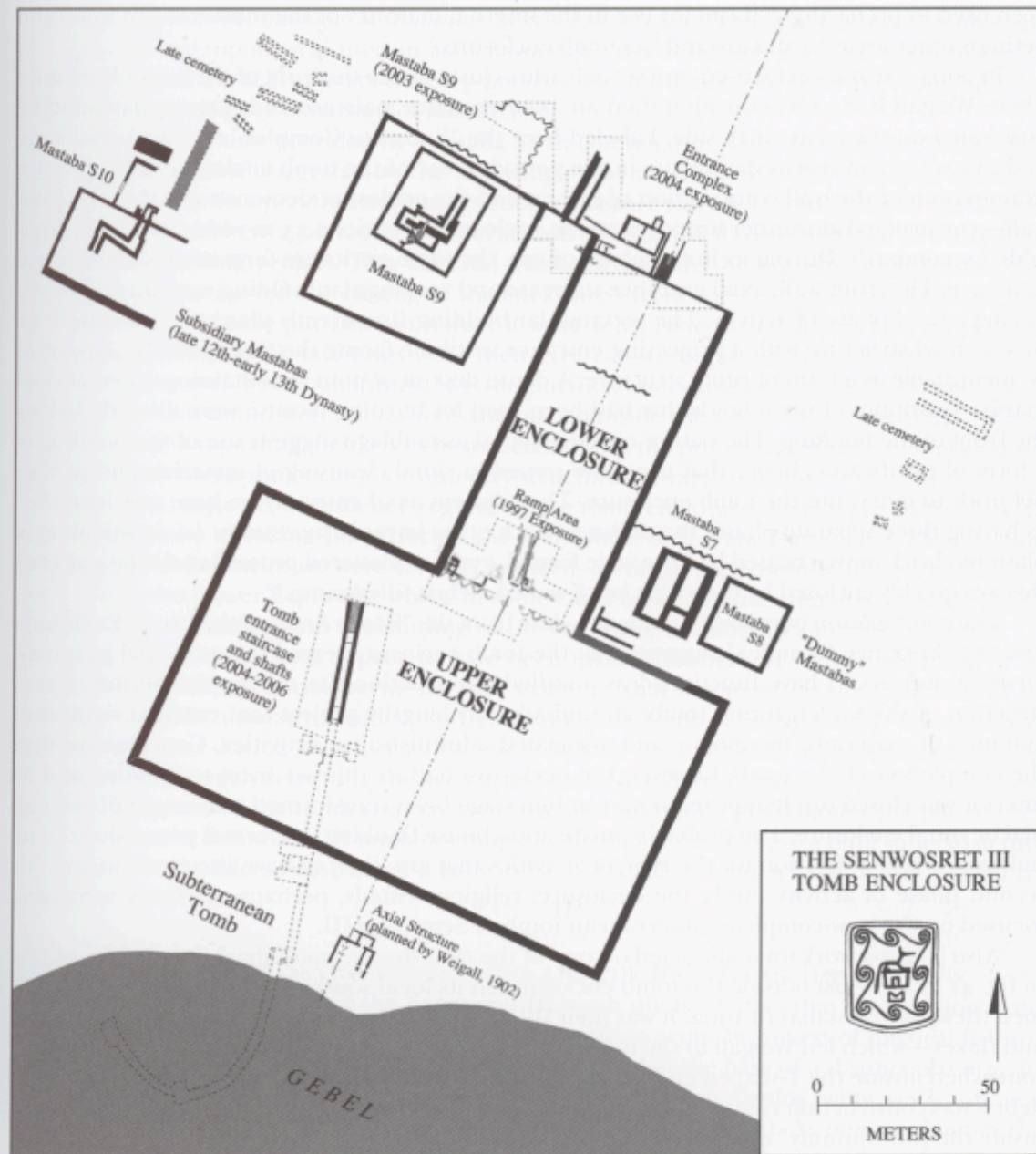


Fig. 4. The Senwosret III tomb enclosure showing the areas excavated since 1997.

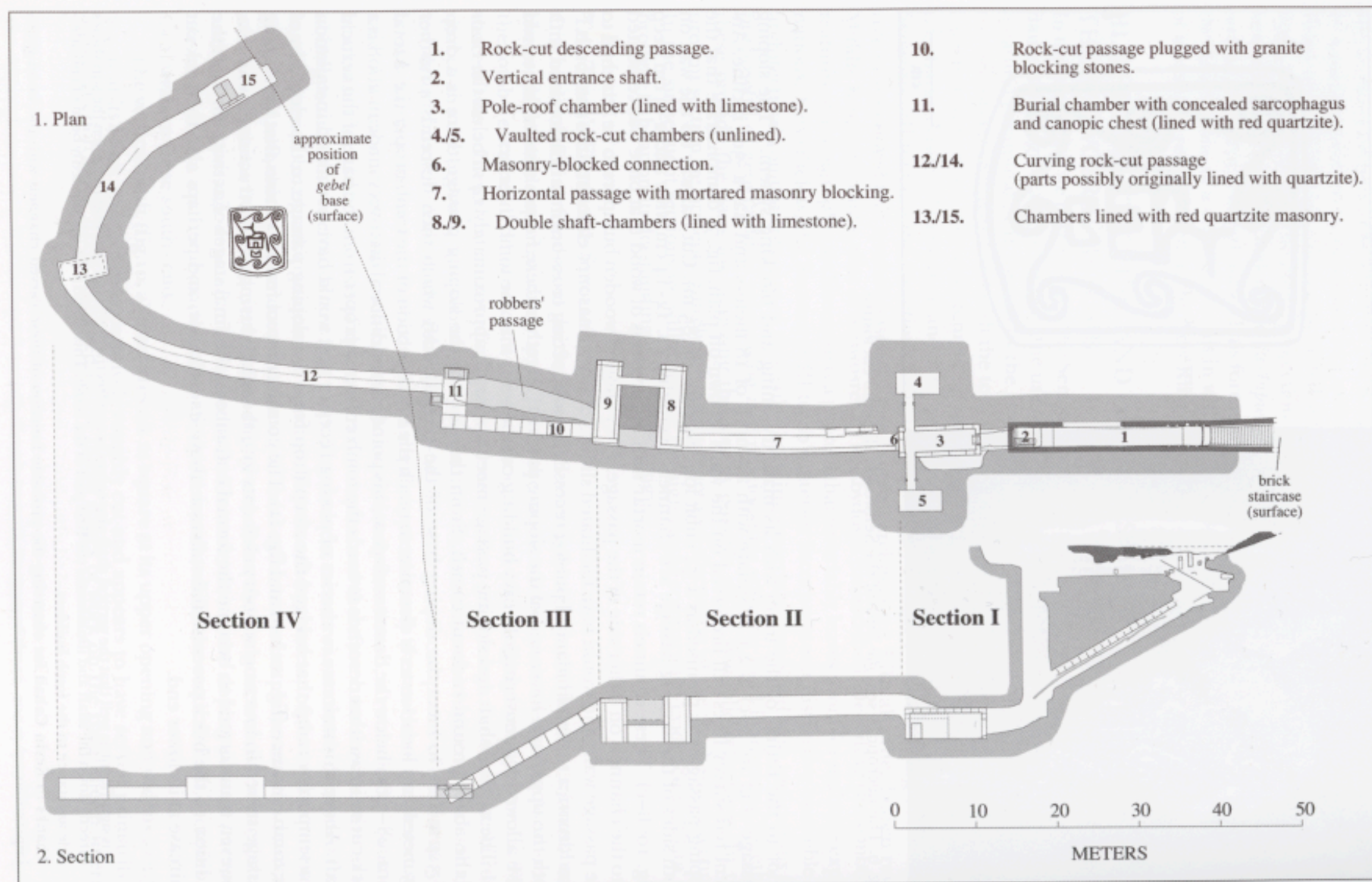


Fig. 7. Overall plan of the architecture of the Senwosret III tomb.

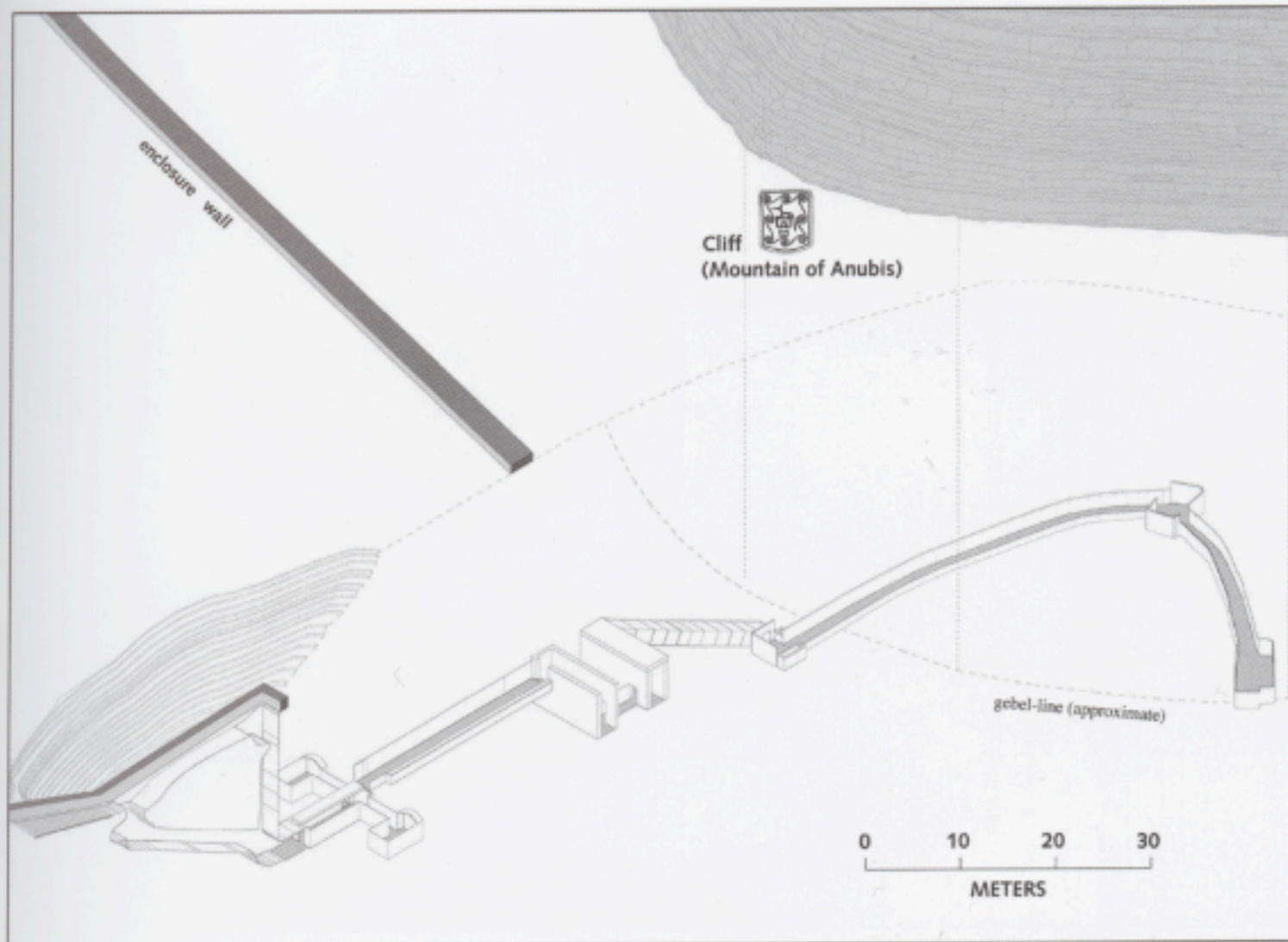


Fig. 8. Isometric view of the subterranean tomb showing its spatial relationship with the natural pyramid of the *dw-Inpw*.

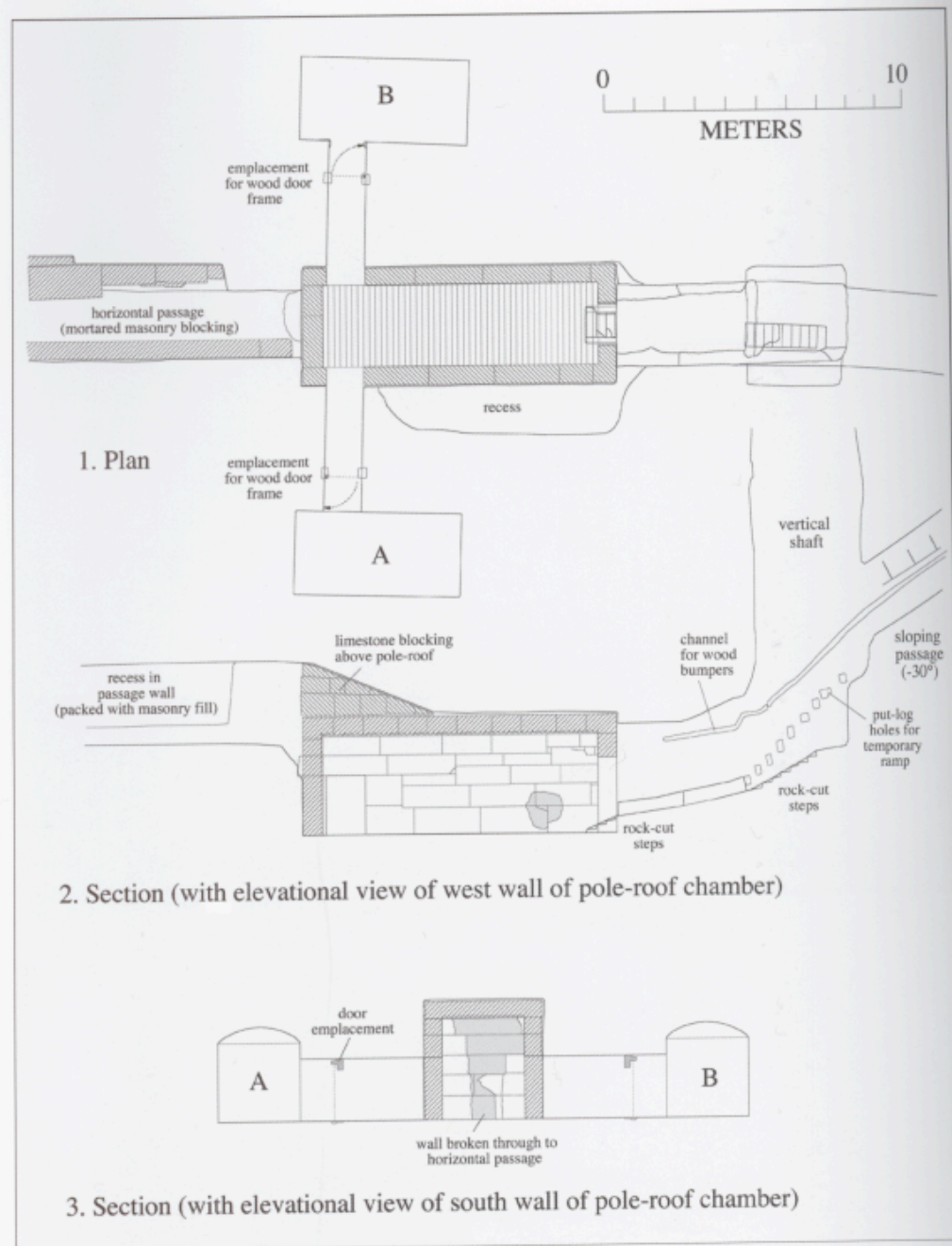


Fig. 11. Plan of the T-shaped unit (Section I).

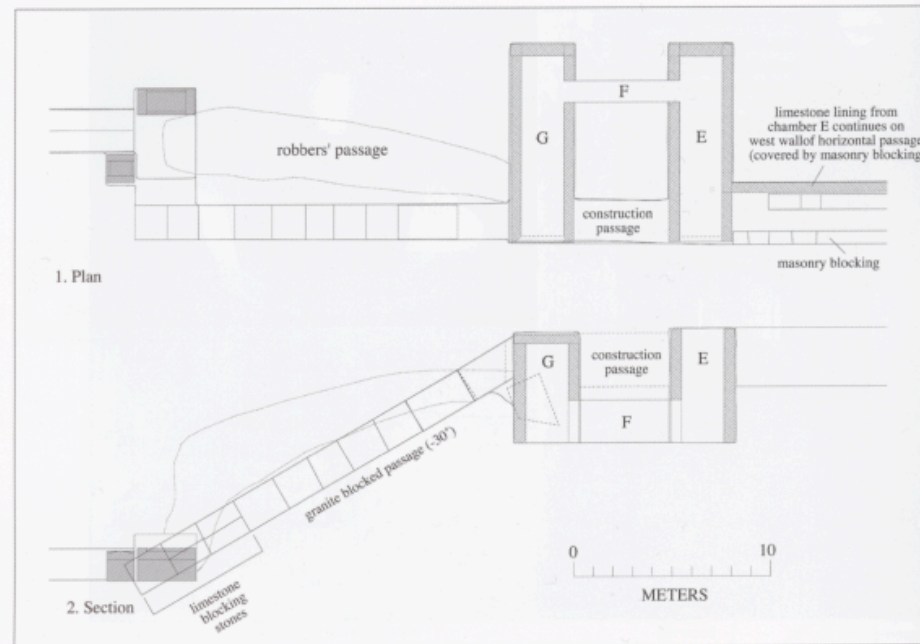


Fig. 14. Plan of the double-shaft chambers, granite blocked passage and burial chamber.



Fig. 15. Views of the second shaft chamber (a-b) with secondarily cut square recesses and the fallen granite blocking stone from the blocked passage (b).

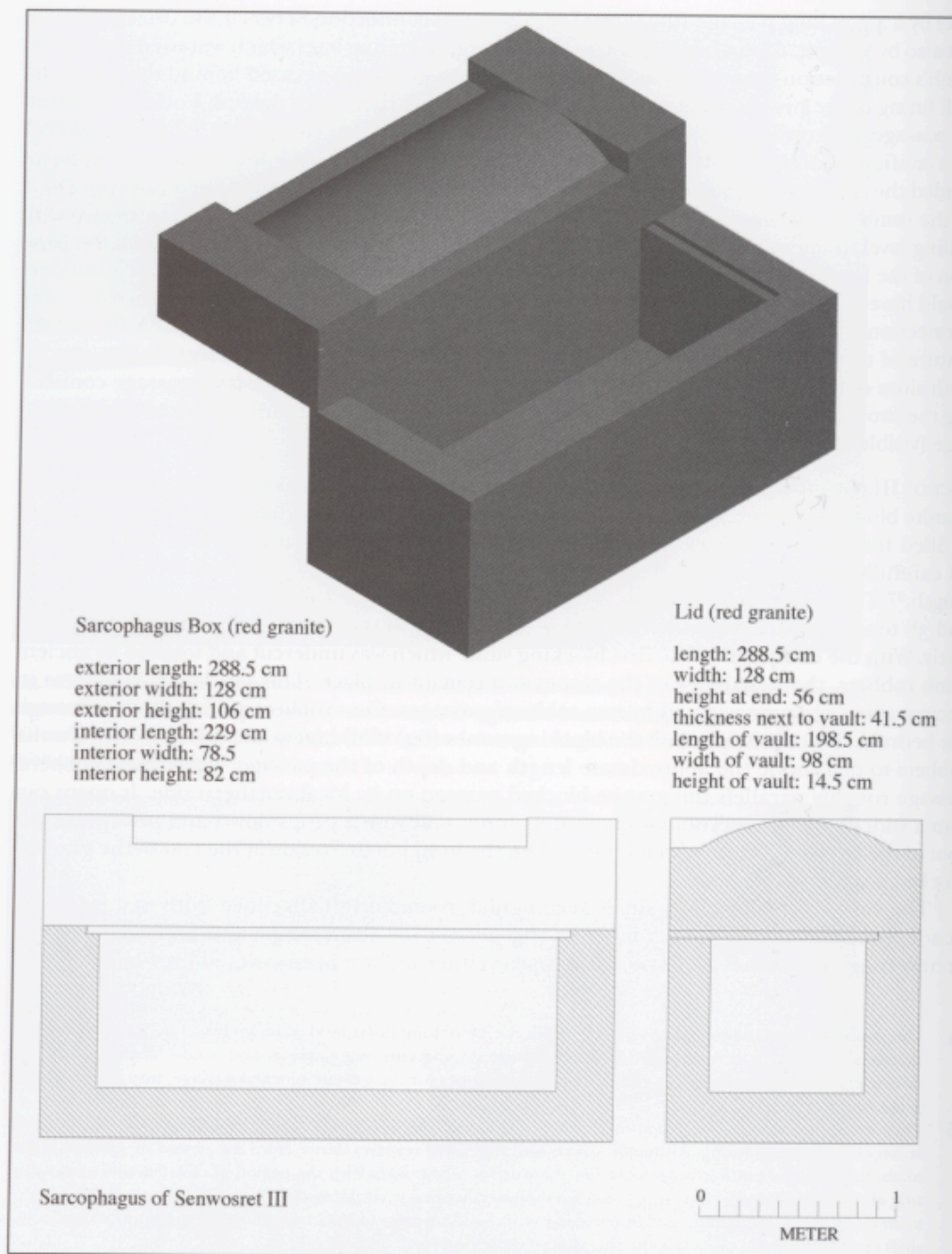


Fig. 18. Detail of the red granite sarcophagus.

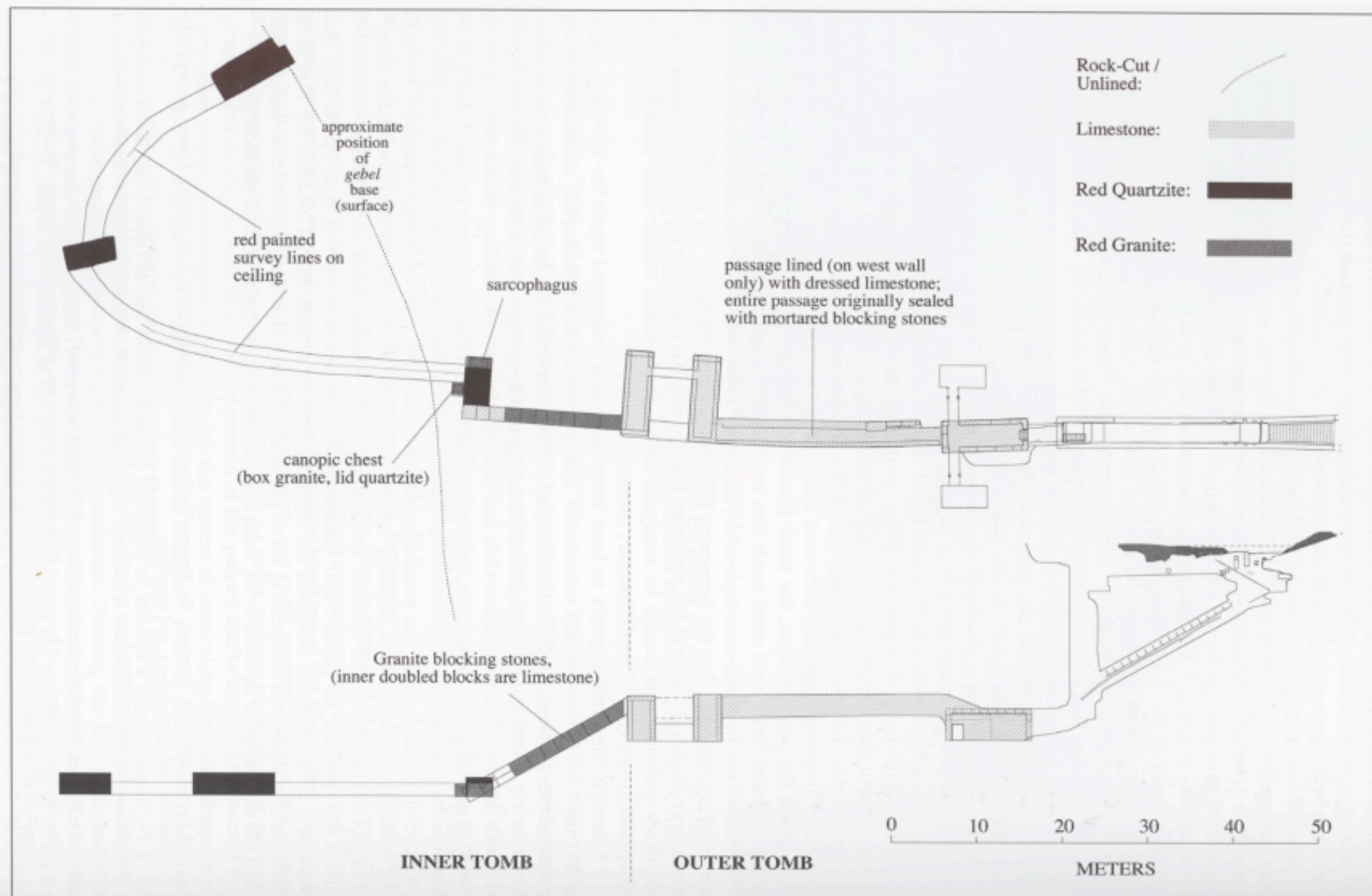


Fig. 20. The materials used in construction of the Senwosret III tomb showing relationship of limestone and red quartzite with the inner and outer sections of the tomb.

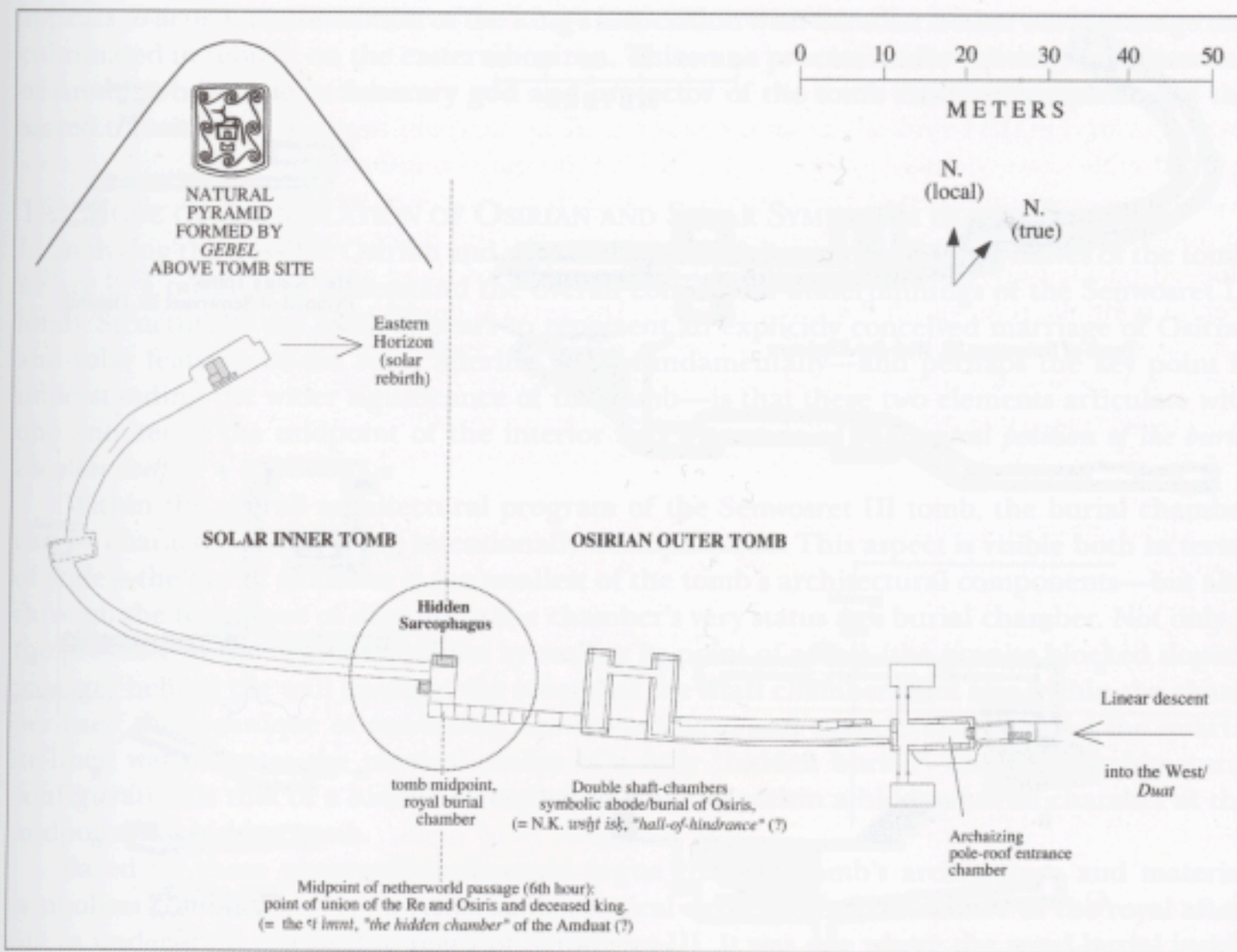
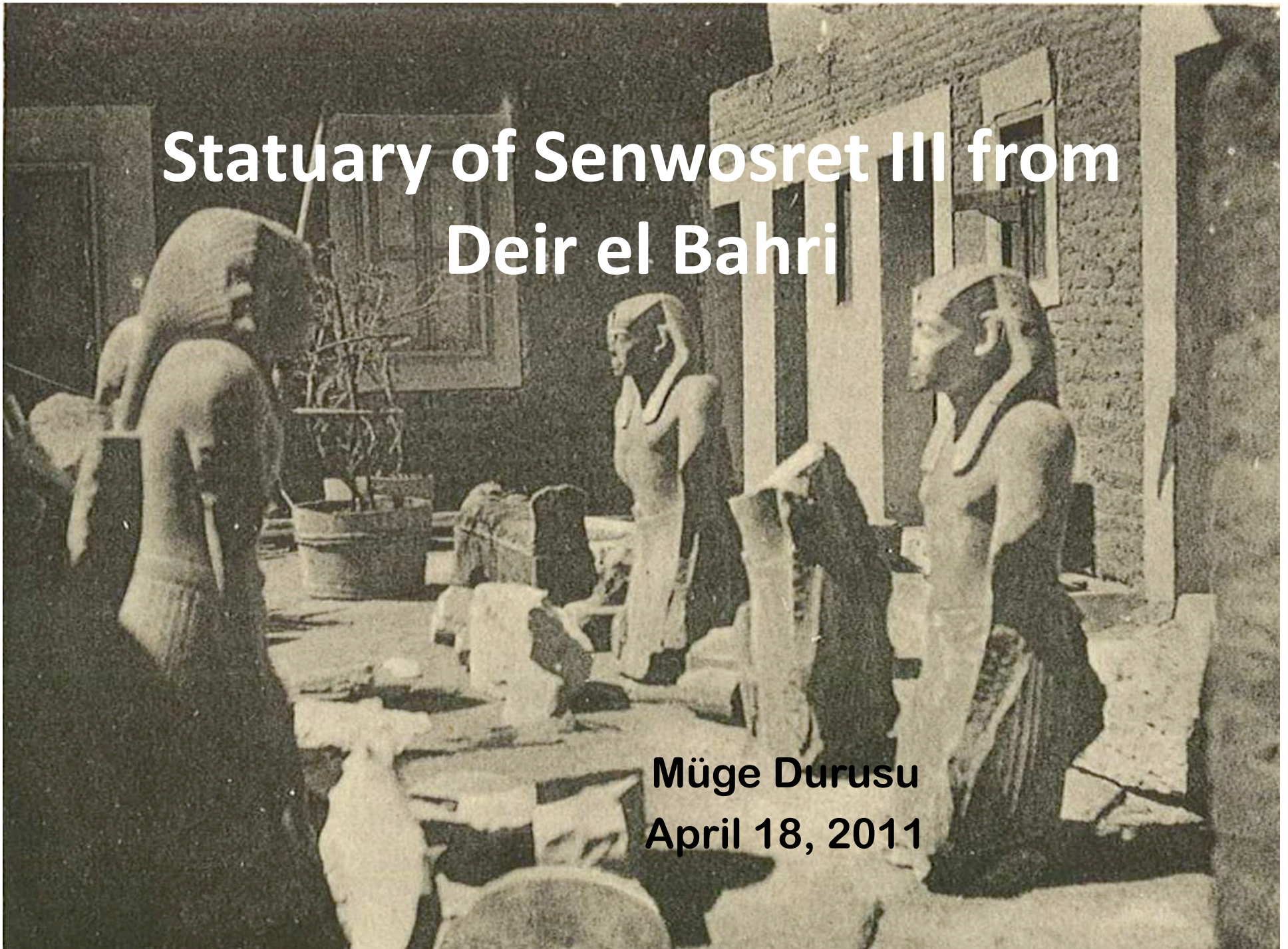


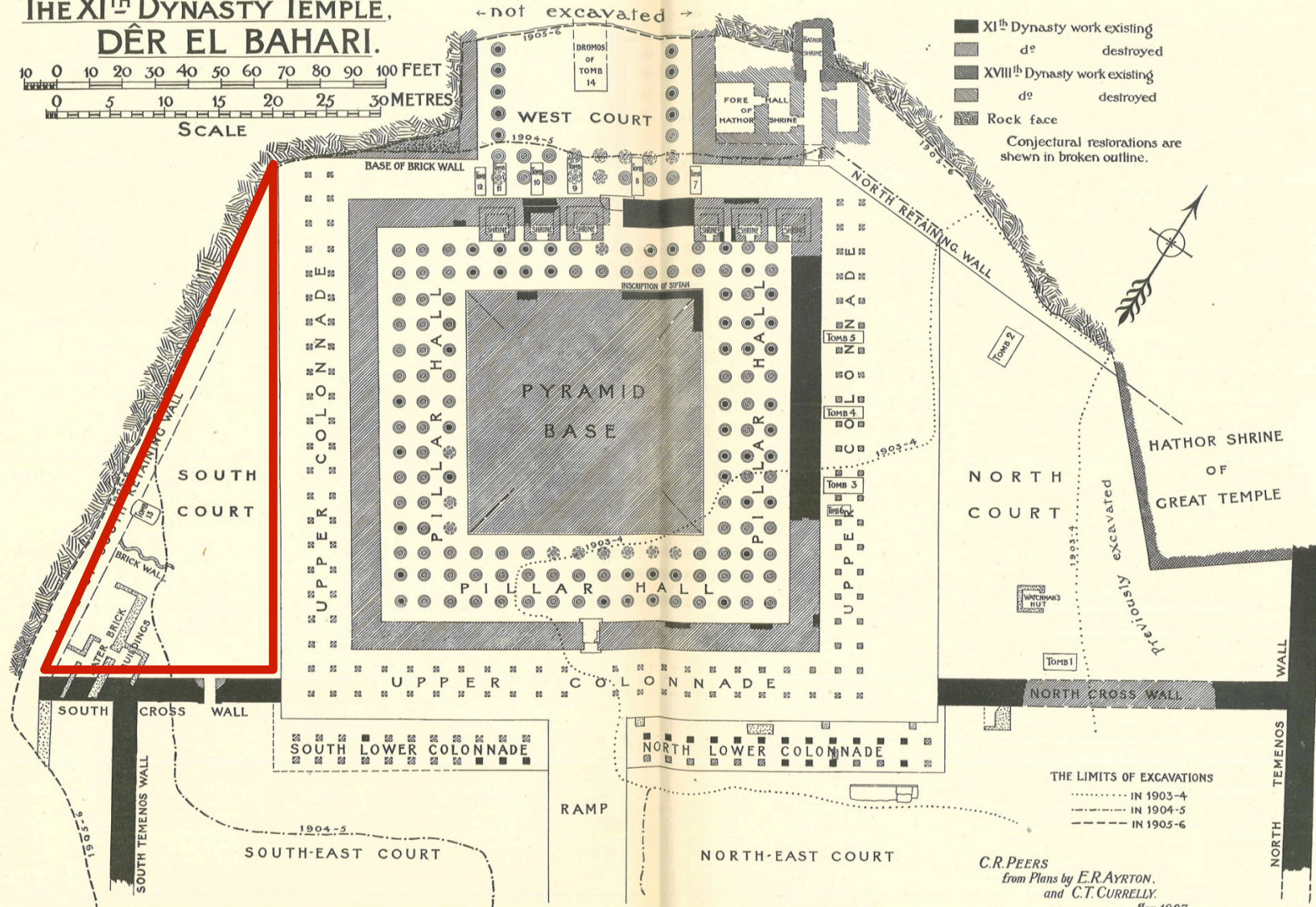
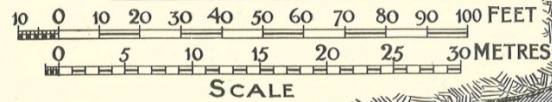
Fig. 21. Suggested Osirian and solar symbolism of the inner and outer tomb with the hidden sarcophagus as point of initiation of solar rebirth at midpoint of the nocturnal passage through the netherworld.

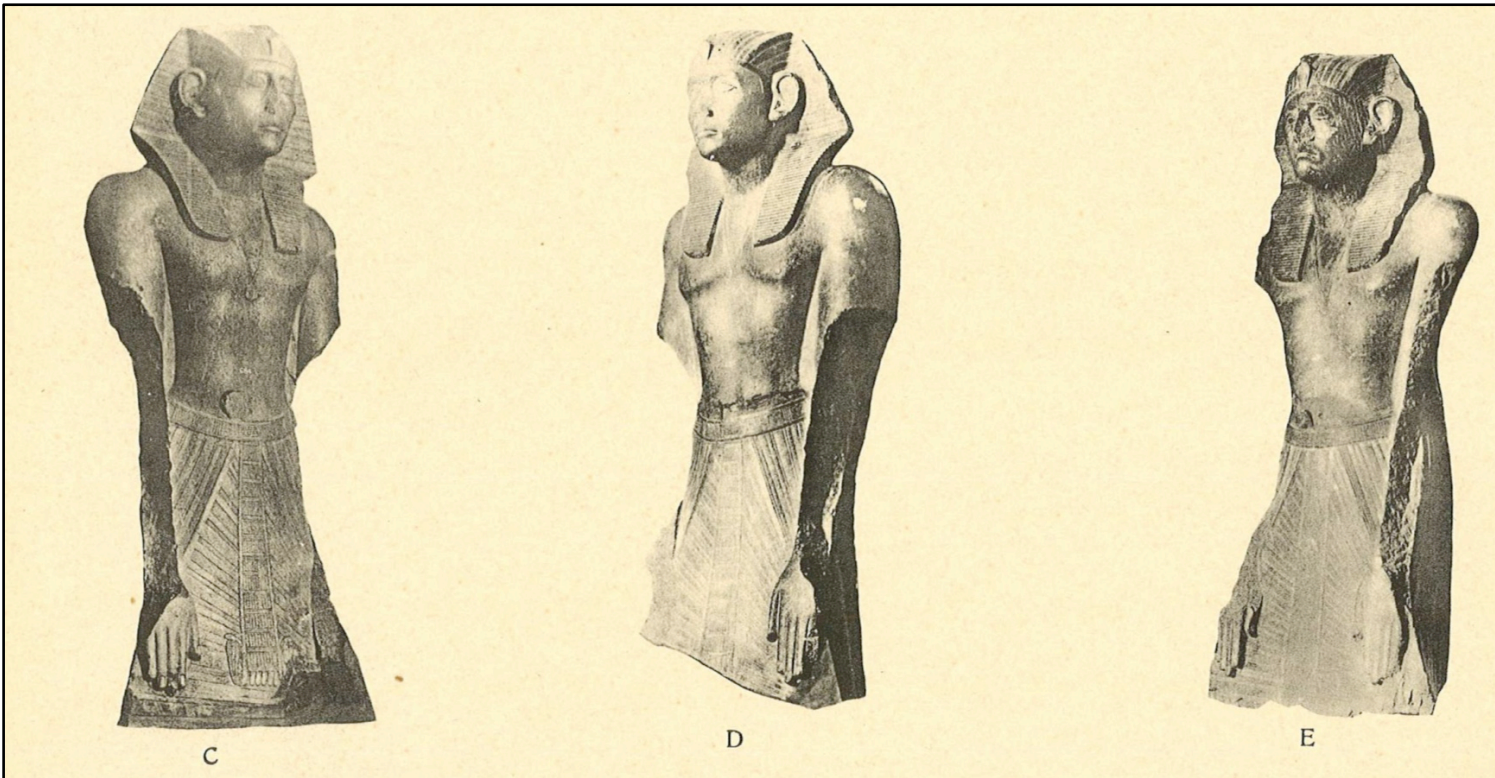
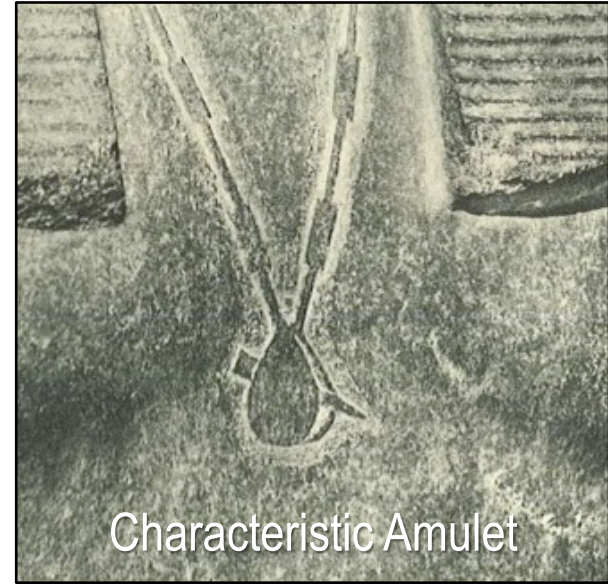
Statuary of Senwosret III from Deir el Bahri



Müge Durusu
April 18, 2011

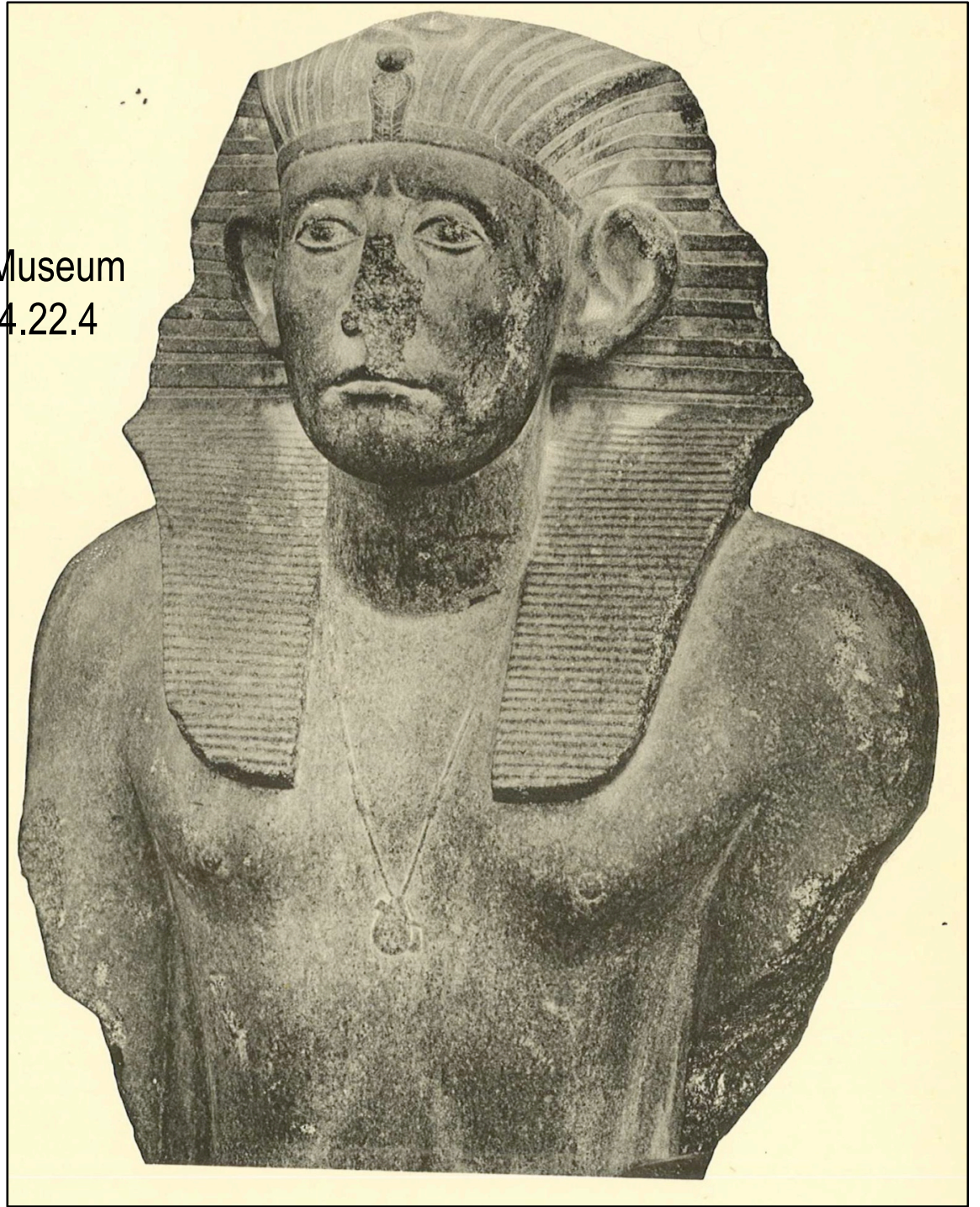
THE XITH DYNASTY TEMPLE, DËR EL BAHARI.





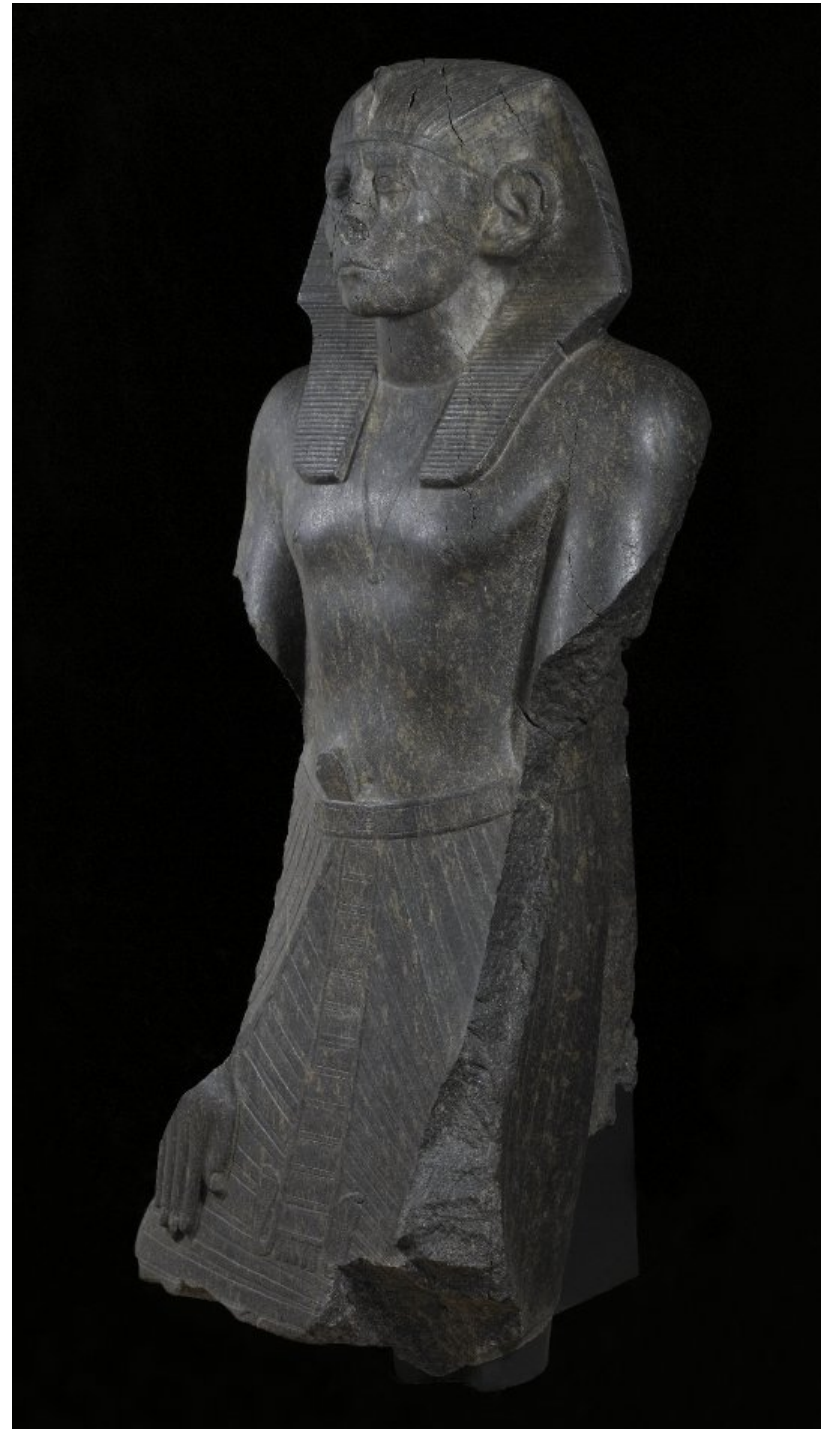


Cairo Museum
RT 18.4.22.4



British Museum

EA 684

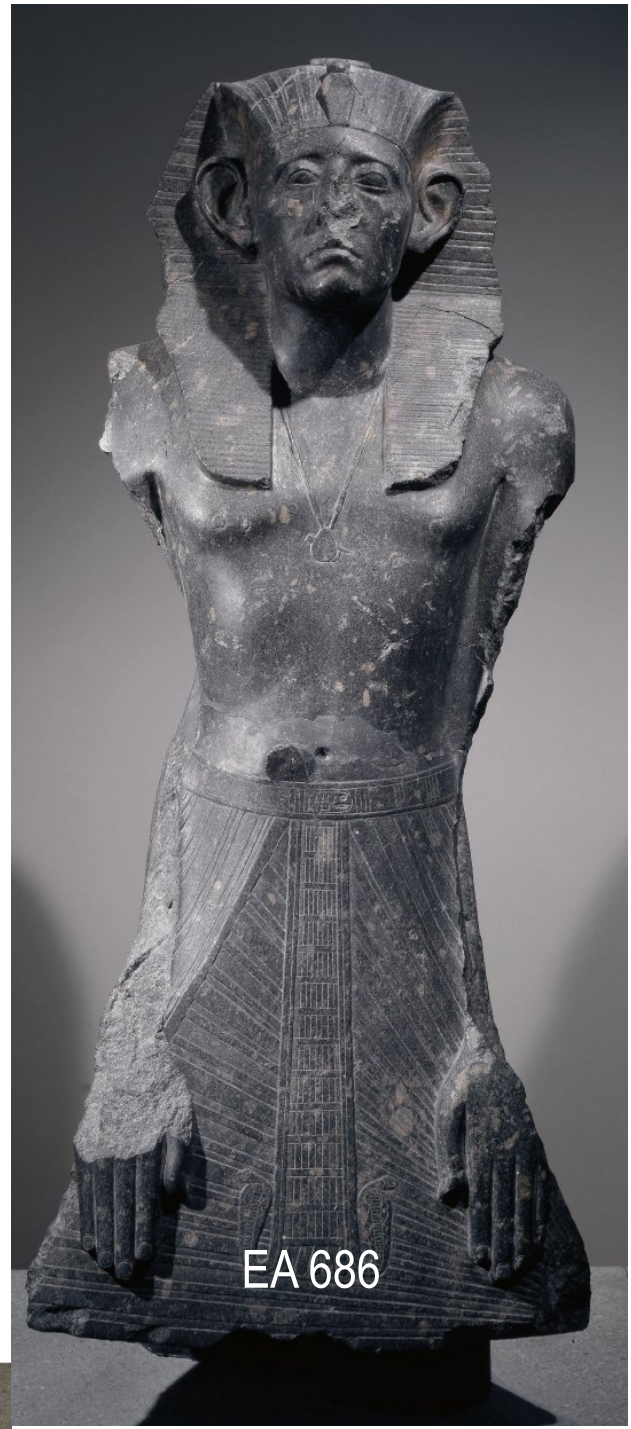
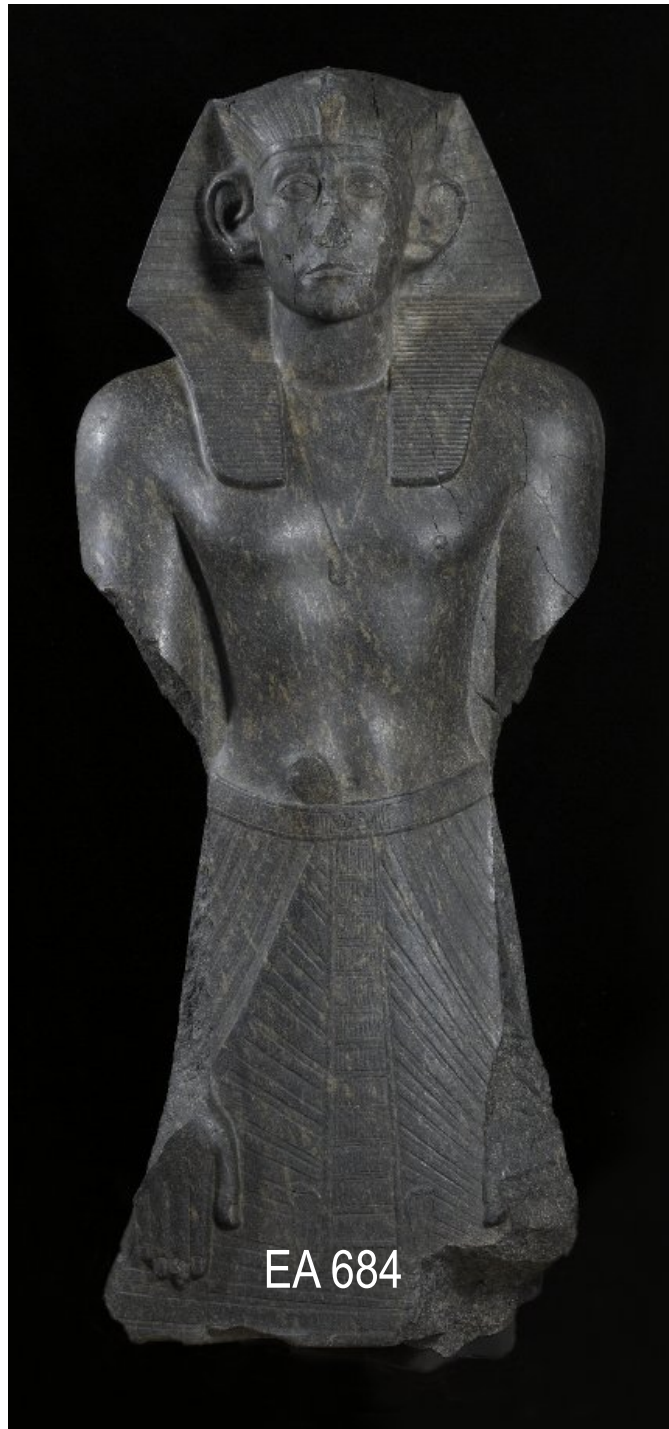


British Museum
EA 685



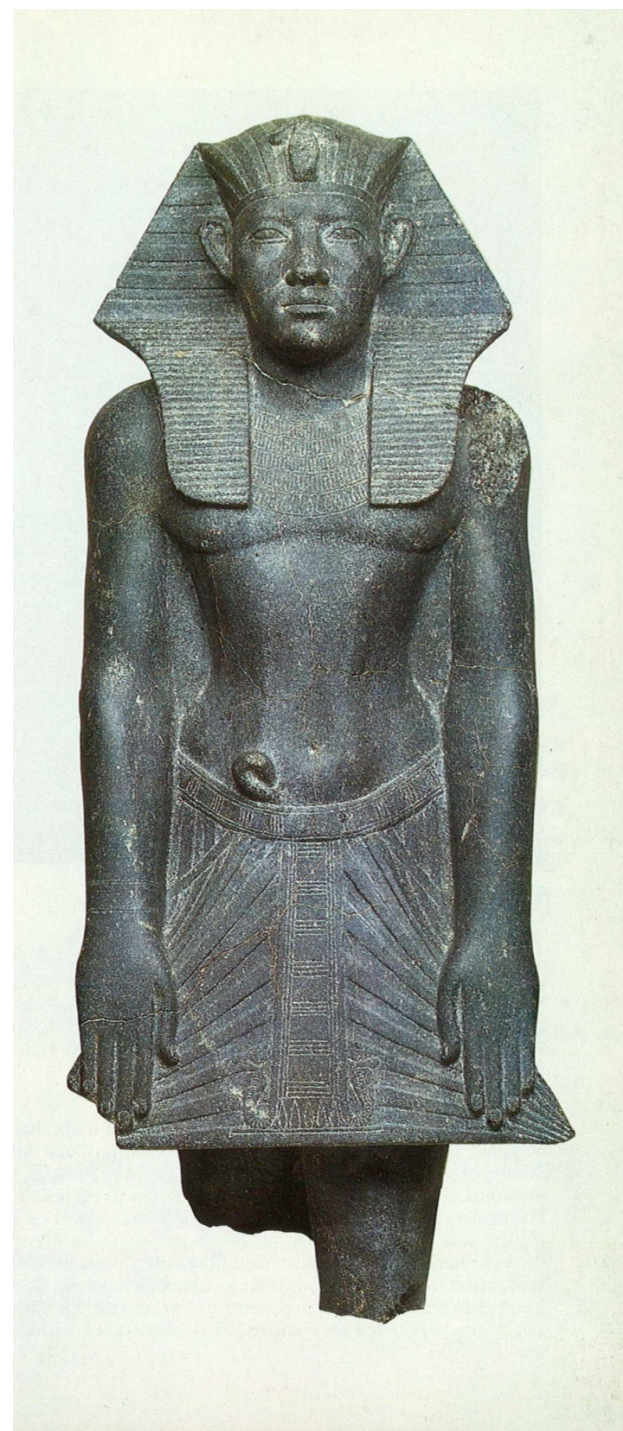
British Museum
EA 686



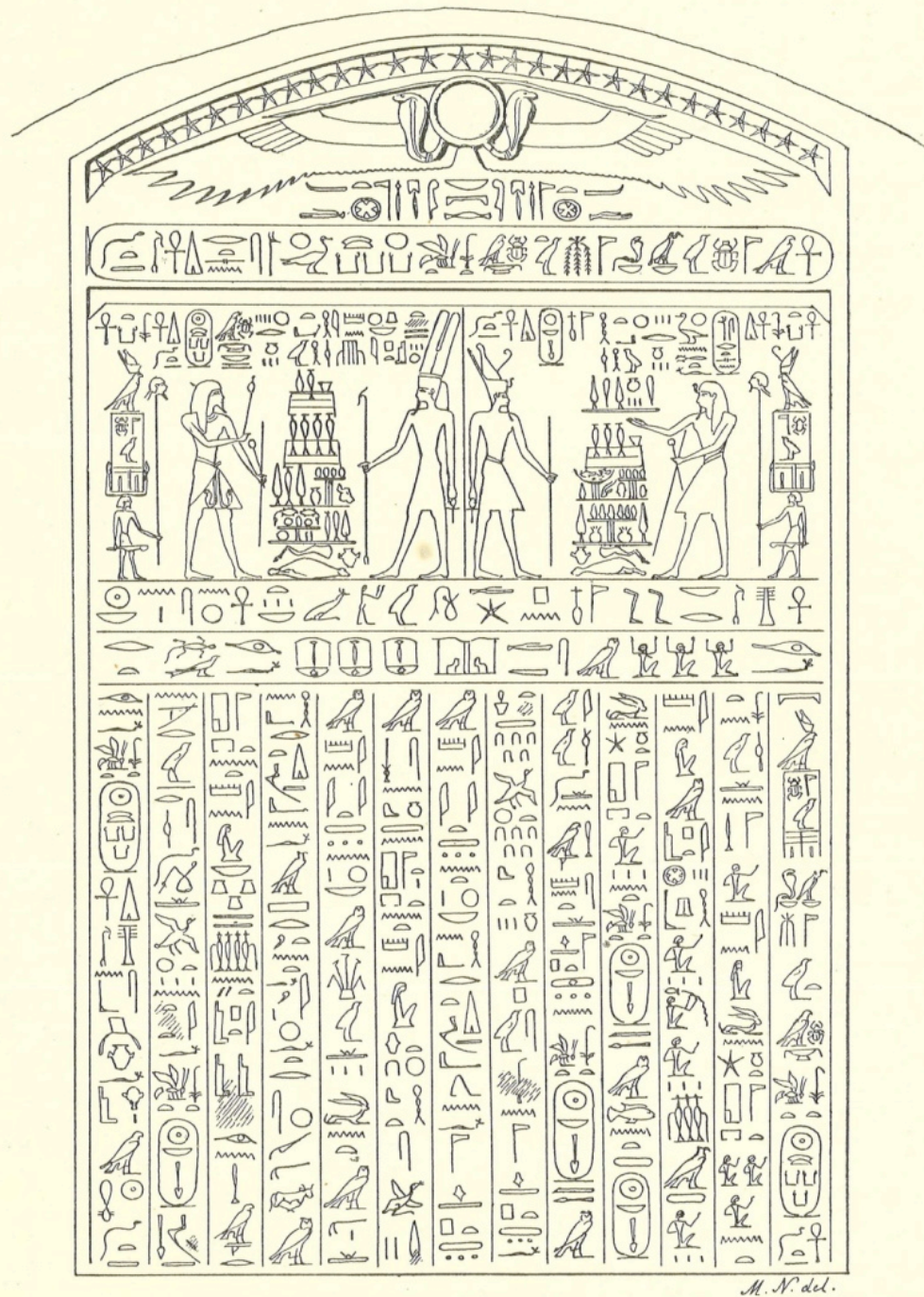




Ukh-hotep and Family
12th Dynasty
Grey granite
Cairo, JE 30965



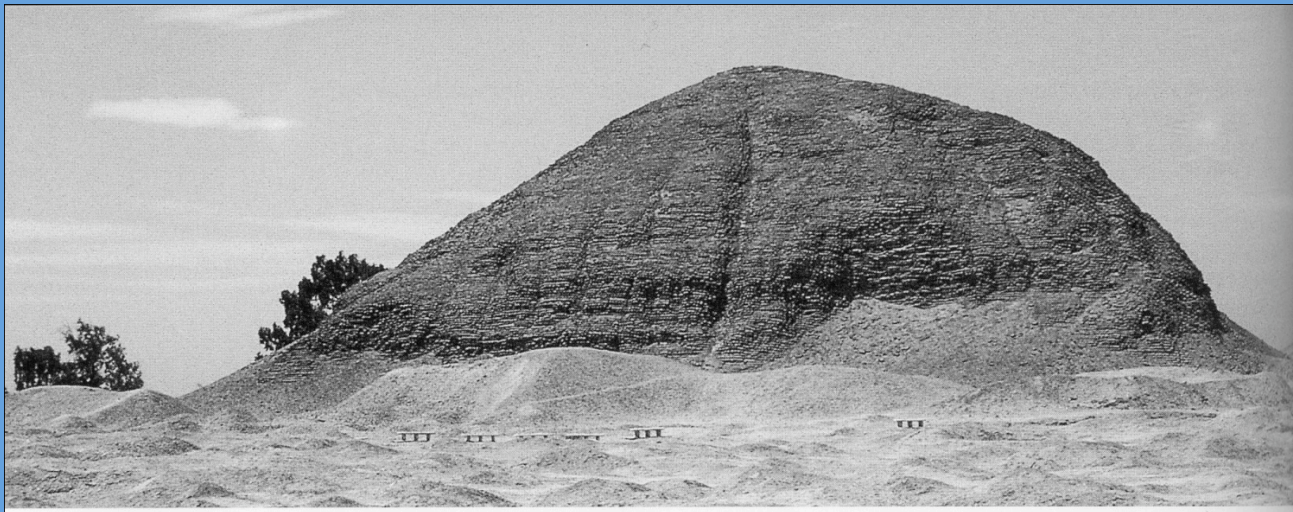
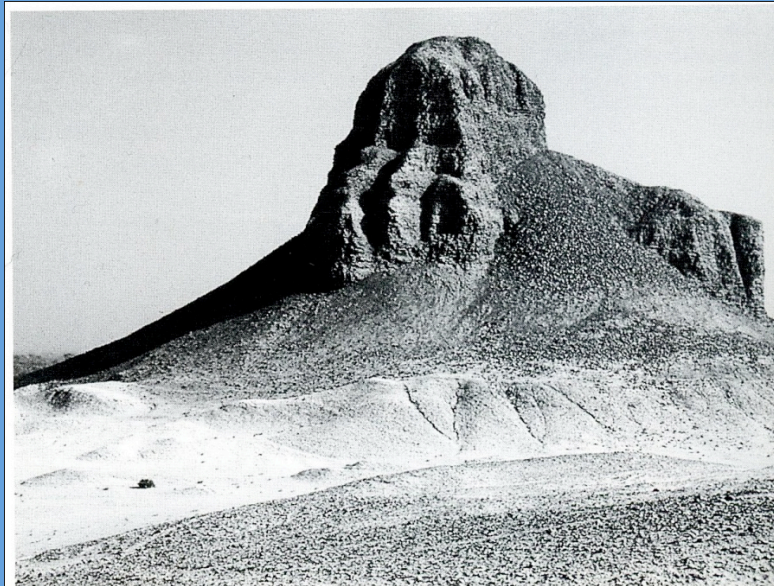
Amenemhat III
12th Dynasty
Black granite
Cairo, JE 37400



Stele of Senwosret III
12th Dynasty
(from Deir el-Bahri)

Pyramids of Amenemhat III

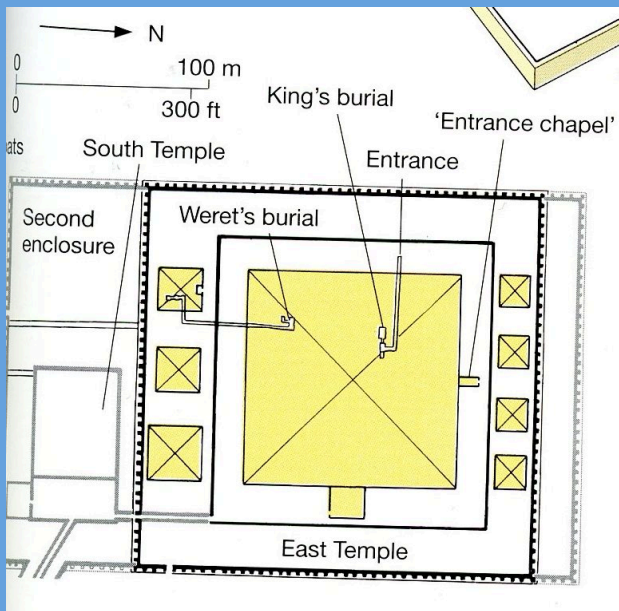
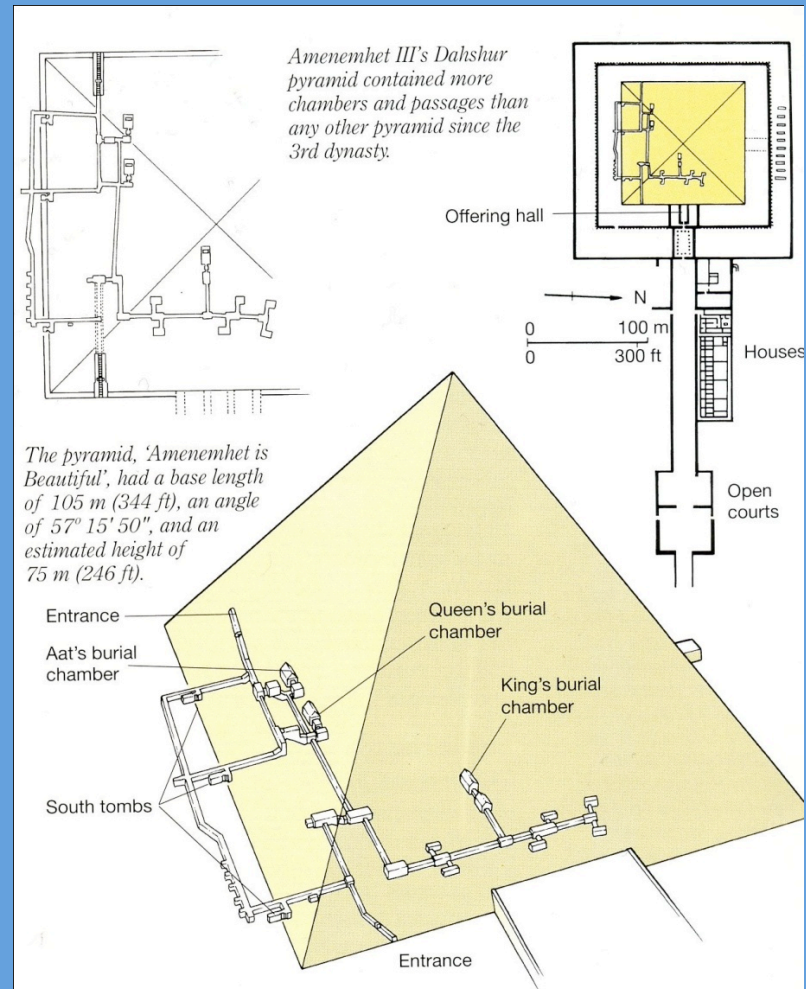
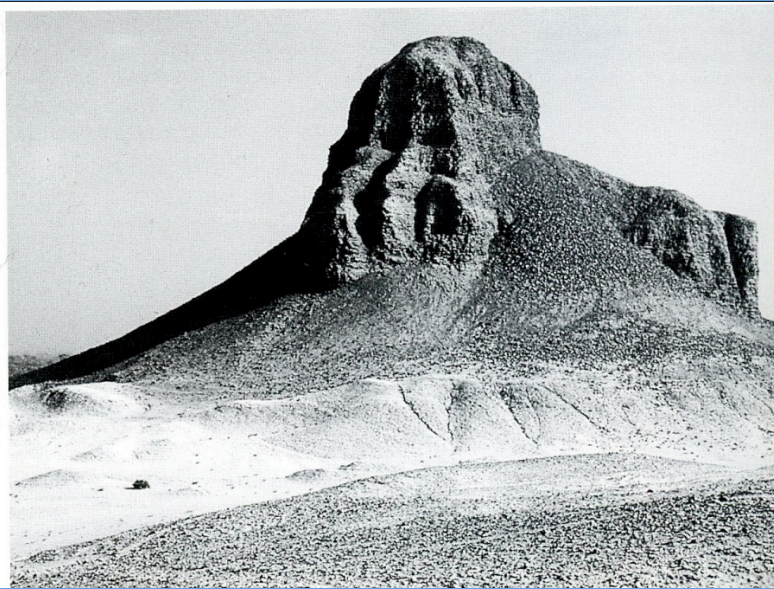
Dahshur



Hawara

Julia Troche: MK Royal

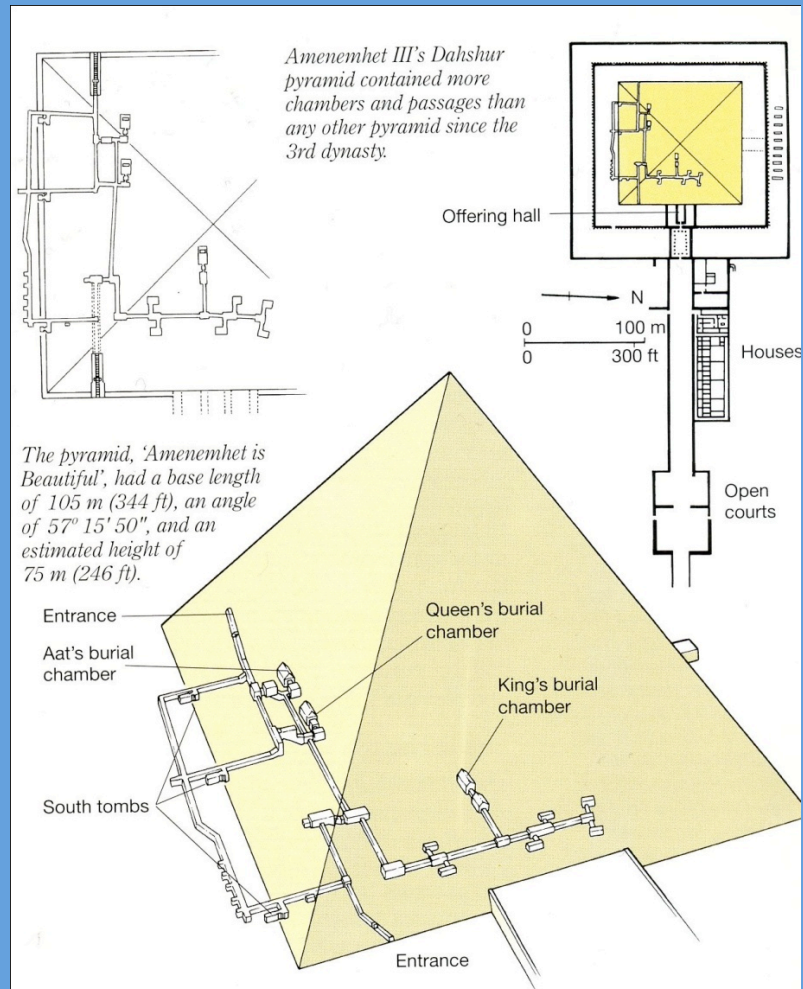
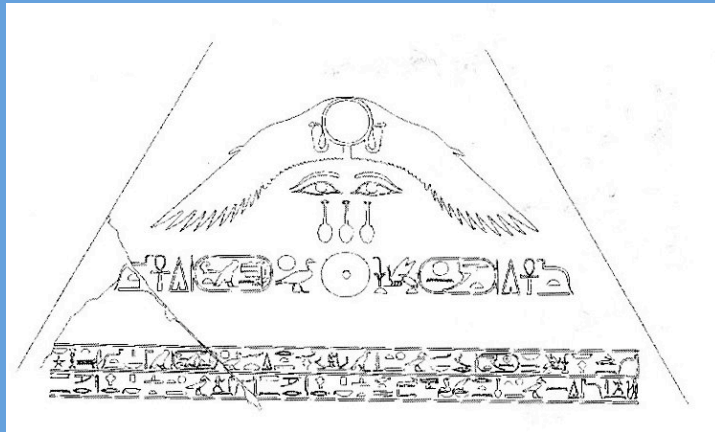
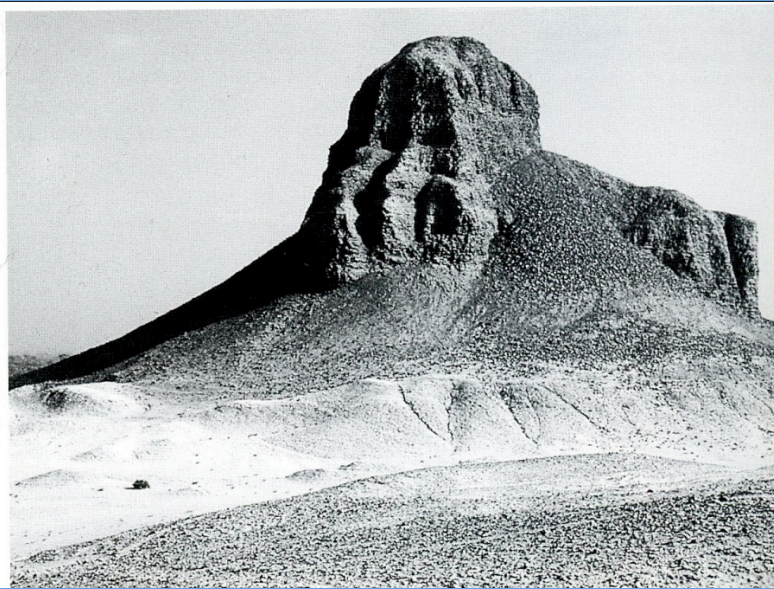
Dahshur Pyramid aka Amenemhat's Black Pyramid



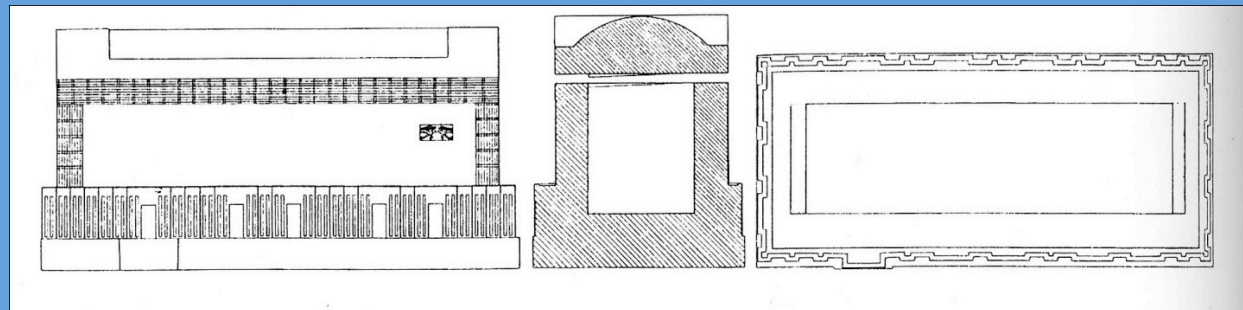
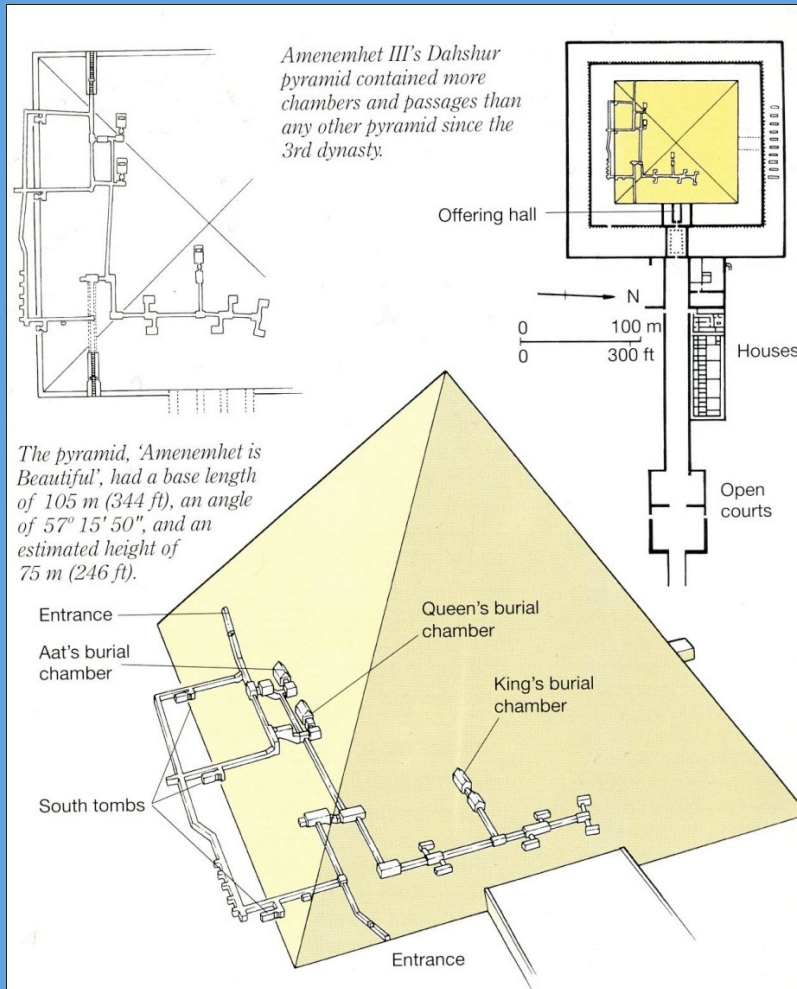
(left) Senwosret III's Pyramid Complex

Dahshur Pyramid

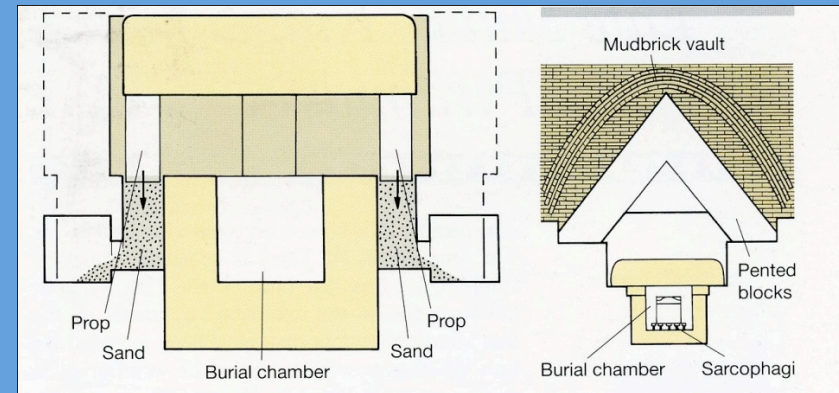
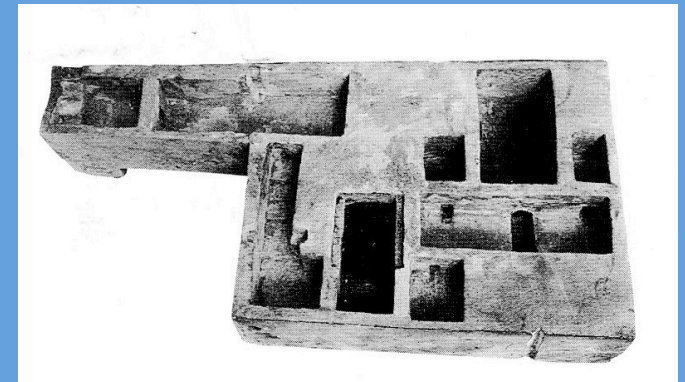
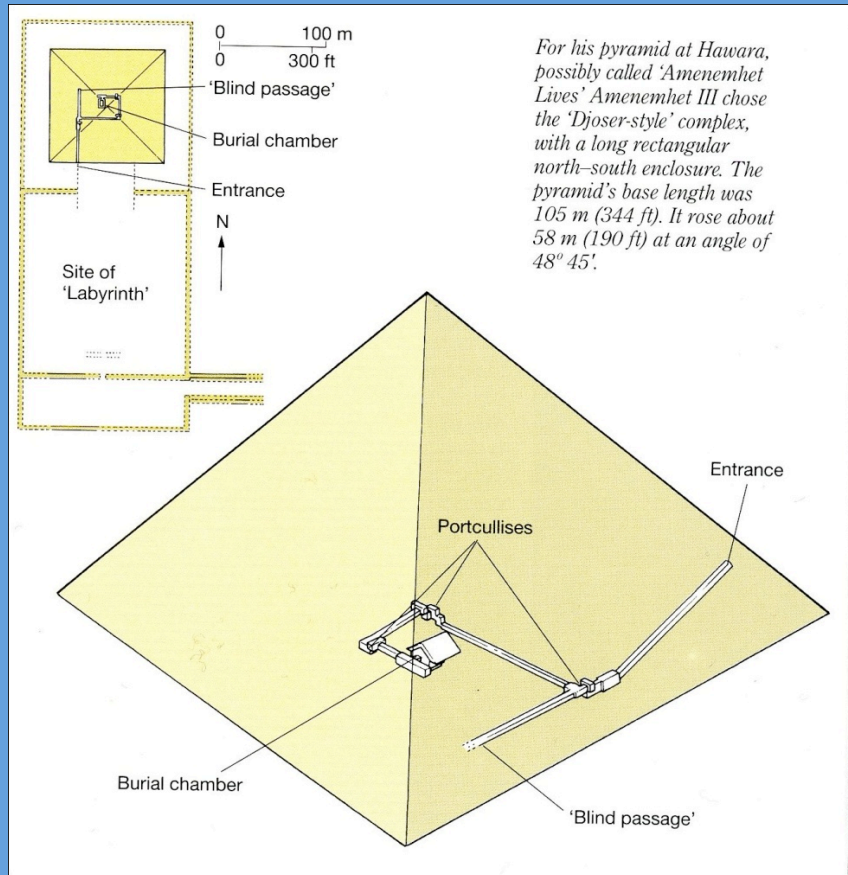
aka Amenemhat's Black Pyramid



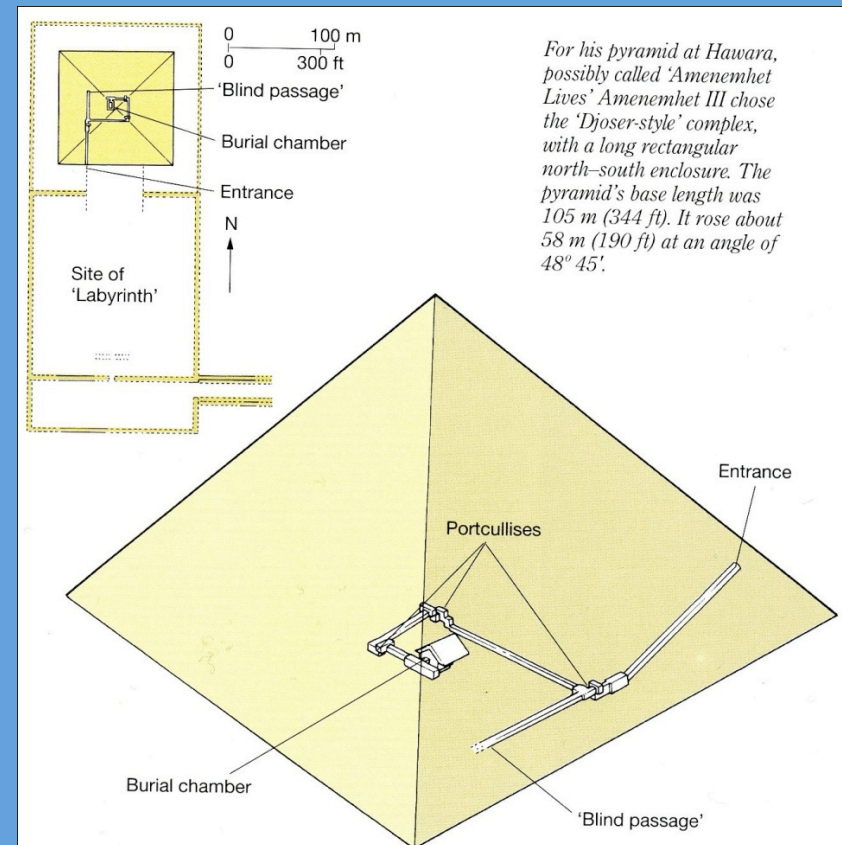
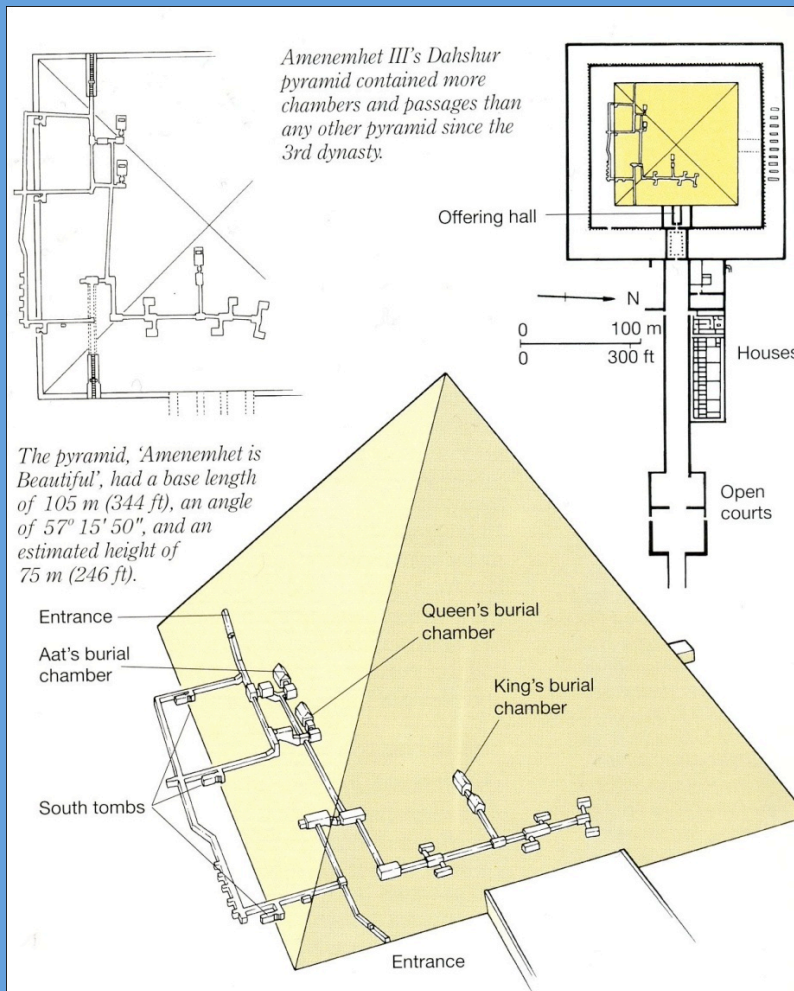
Dahshur Pyramid aka Amenemhat's Black Pyramid



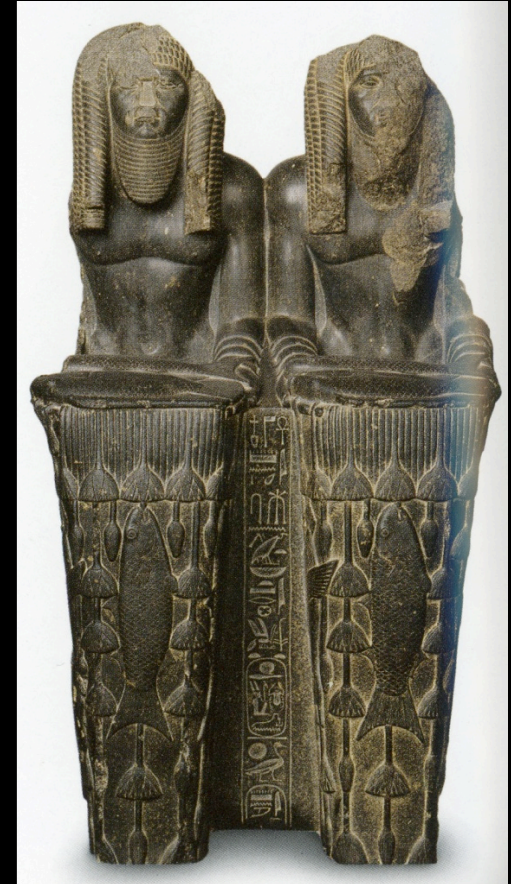
Hawara 'Labyrinth' Pyramid Complex



Why the extreme differences in orientation and layout?
 Was the Hawara Pyramid built only because of the collapse of the Dahshur pyramid, or did the two pyramid complexes represent two distinctive ideological concerns?



Statuary of Amenemhat III



Kathryn Howley



a) Amenemhet III., MMA 29.100.150. H. O. Havemeyer Collection, Bequest of Mrs. H. O. Havemeyer, 1929. Photograph by BILL BARRETTE



b) Amenemhet III., Cambridge E 2.1946. Courtesy of the Fitzwilliam Museum, Cambridge



c) Amenemhet III., Hawara, Kairo CG 385. UB-Archiv Heidelberg, Neg.Nr. I/795



d) Amenemhet III., Lischt, MMA 08.200.2. Rogers Fund, 1908. Photograph by BILL BARRETTE



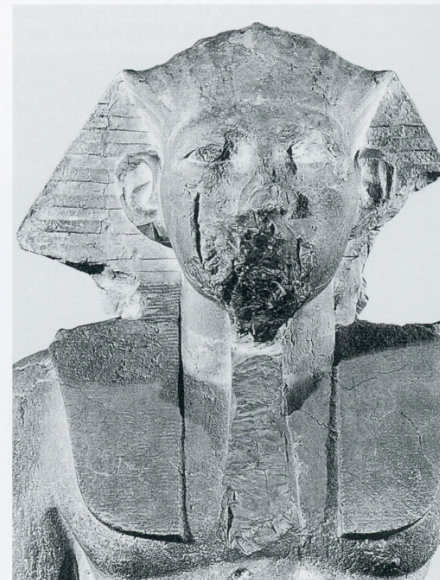
a) Amenemhet III., MMA 12.183.6. Gift of J. Piermont Morgan, 1912. Photograph by BILL BARRETTE



b) Amenemhet III., St. Petersburg 729



c) Amenemhet III., Medinet Madi, Kairo JE 66322



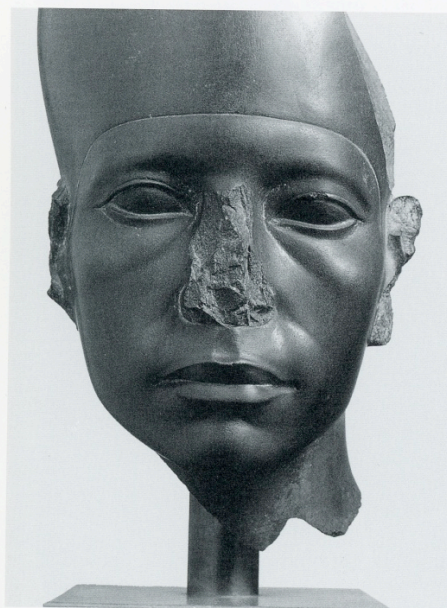
d) Amenemhet III., Medinet Madi, Mailand RAN 0.9.40001. Courtesy of the Civiche Raccolte Archeologiche e Numismatiche, Mailand



a) Amenemhet III., Karnak, Kairo CG 42015



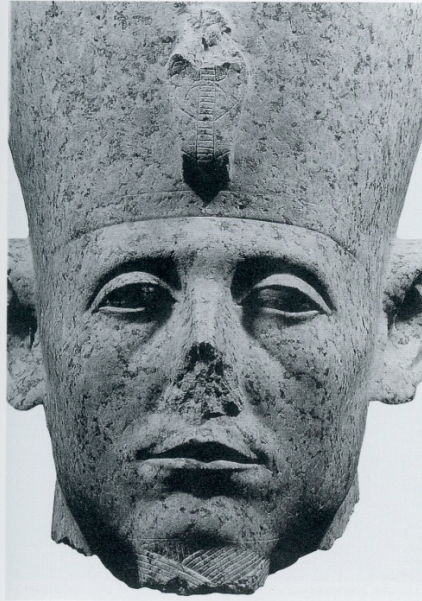
b) Amenemhet III., Tanis, Kairo CG 394



c) Amenemhet III., Kopenhagen AEIN 924. Courtesy of the Ny Carlsberg Glyptotek



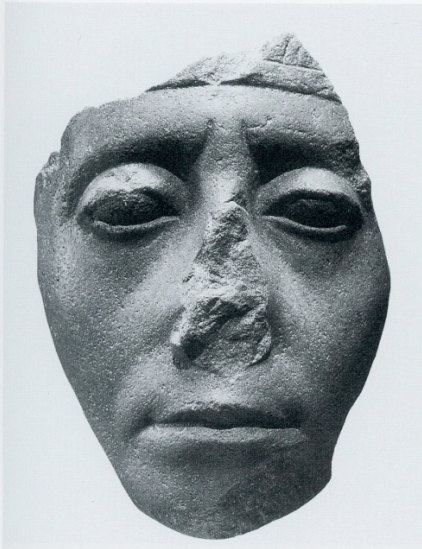
d) Amenemhet III., Tanis, Kairo CG 1243



a) Sesostrius III., Karnak, Luxor Museum J 34.
Photo: E. THIEM, Lotos-Film Kaufbeuren



b) Sesostrius III., Cambridge E 37.1930. Courtesy of the Fitzwilliam Museum, Cambridge



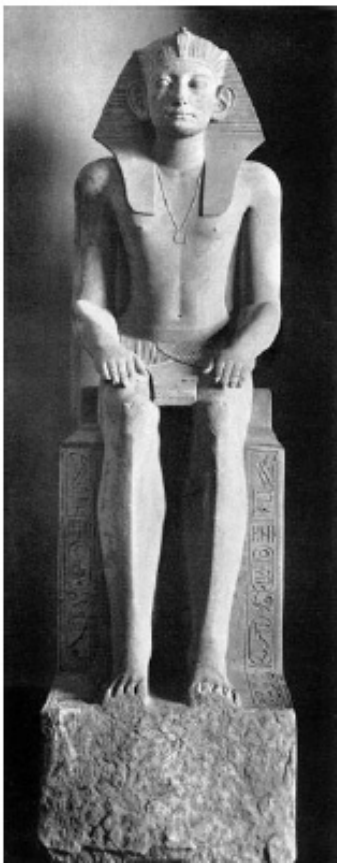
c) Sesostrius III., MMA 26.7.1394. Purchase, Edward S. Harkness Gift, 1926. Photograph by BILL BARRETTE



d) Sesostrius III., Brooklyn 52.1. Courtesy of The Brooklyn Museum Charles Edwin Wilbour Fund



a. Senwosret III from Deir el-Bahari. British Museum, EA 686. Courtesy of The Trustees of The British Museum.



b. Amenemhat III seated, from Hawara. Cairo, CG 385. Courtesy Egyptian Museum, Cairo.



c. Amenemhat III, from Karnak (?). Cleveland 1960.56. © The Cleveland Museum of Art, 200. Purchase from the J.H. Wade Fund.



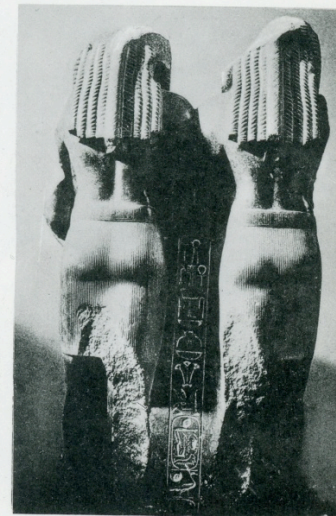
1 - Caire 1243



2 - Caire 392



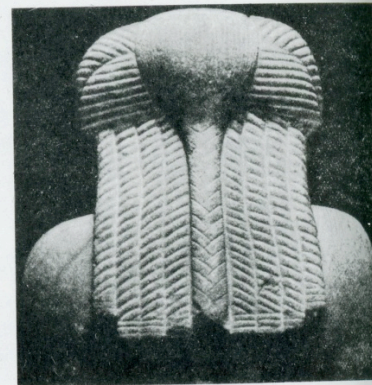
3 - Caire 392



4 - Caire 392

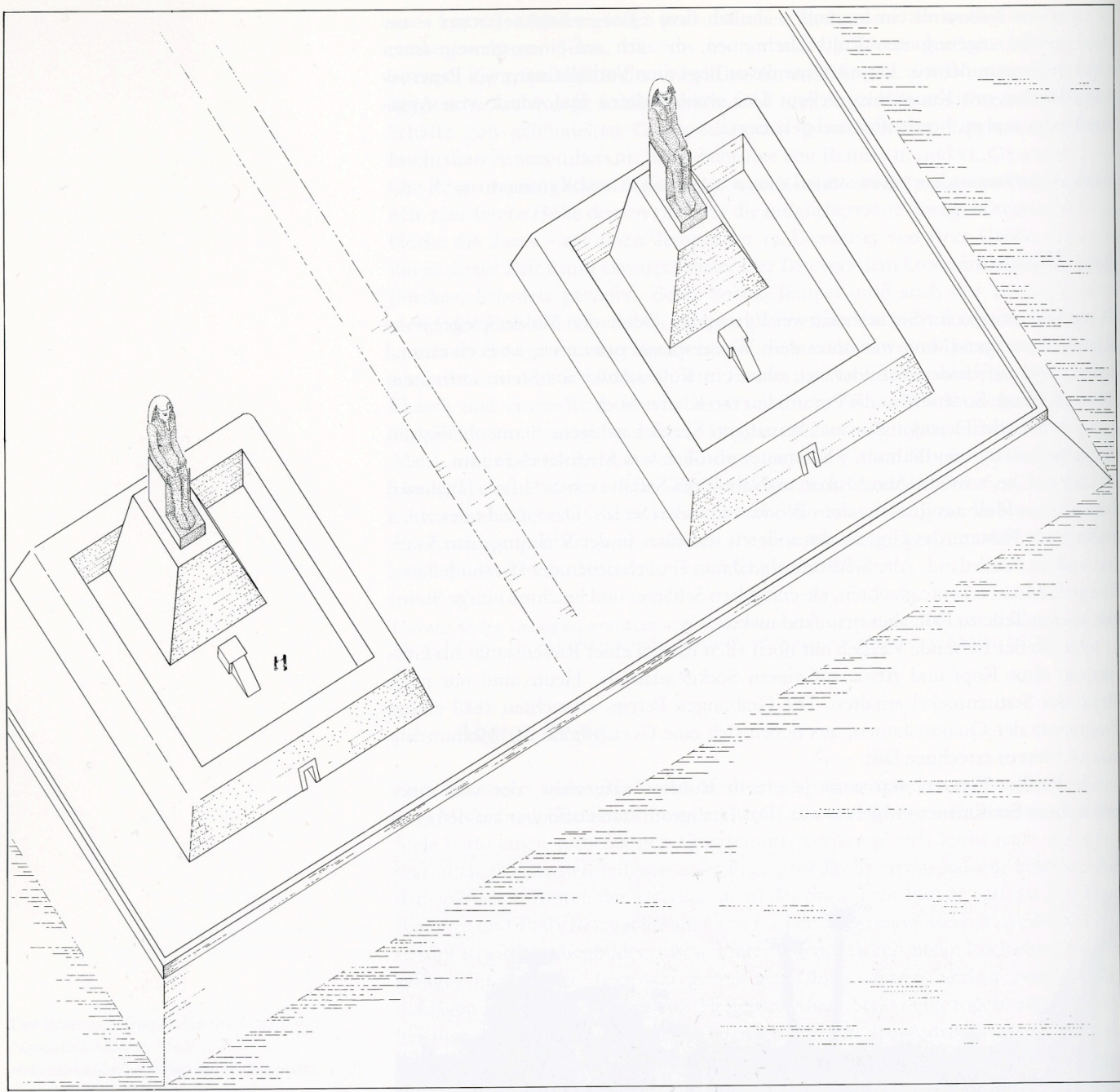


1-2 - Caire 395



3-4 - Rome, Musée des Thermes





Wooden Ka-Statue of King Hor

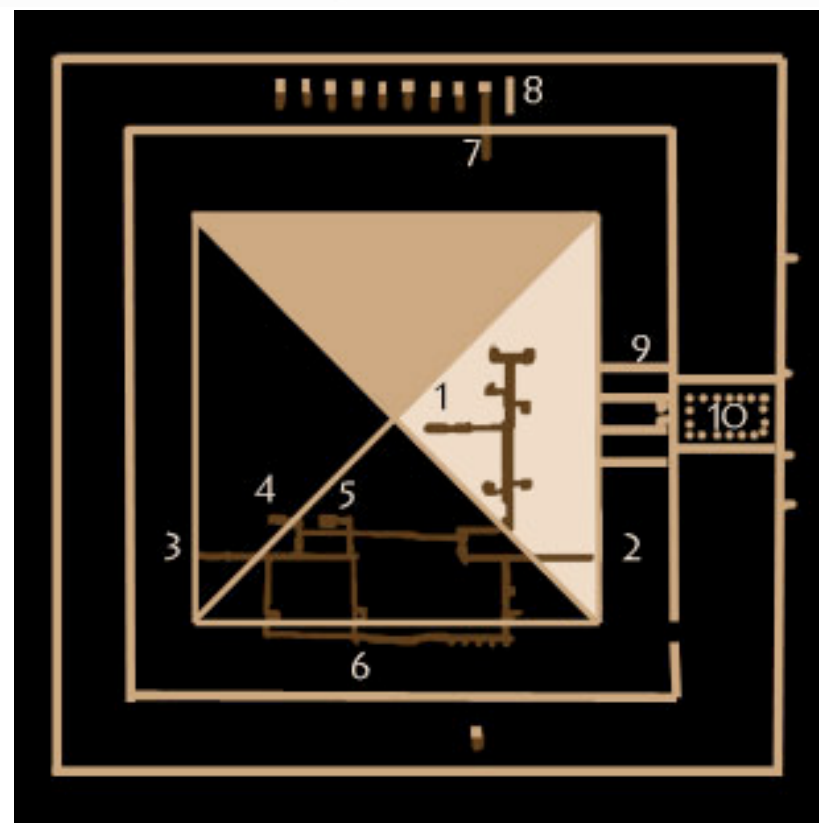
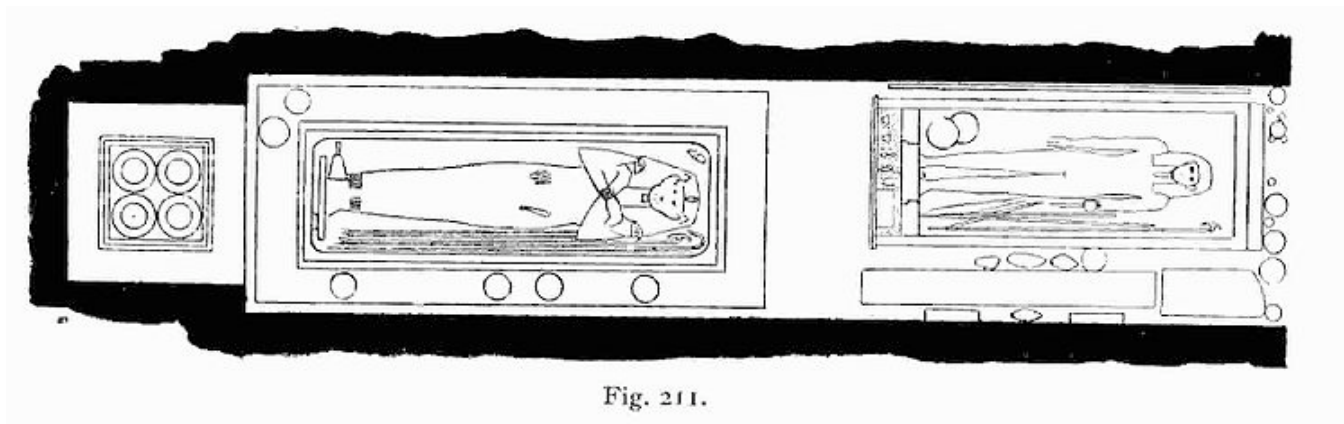
From the Egyptian
Museum in Cairo

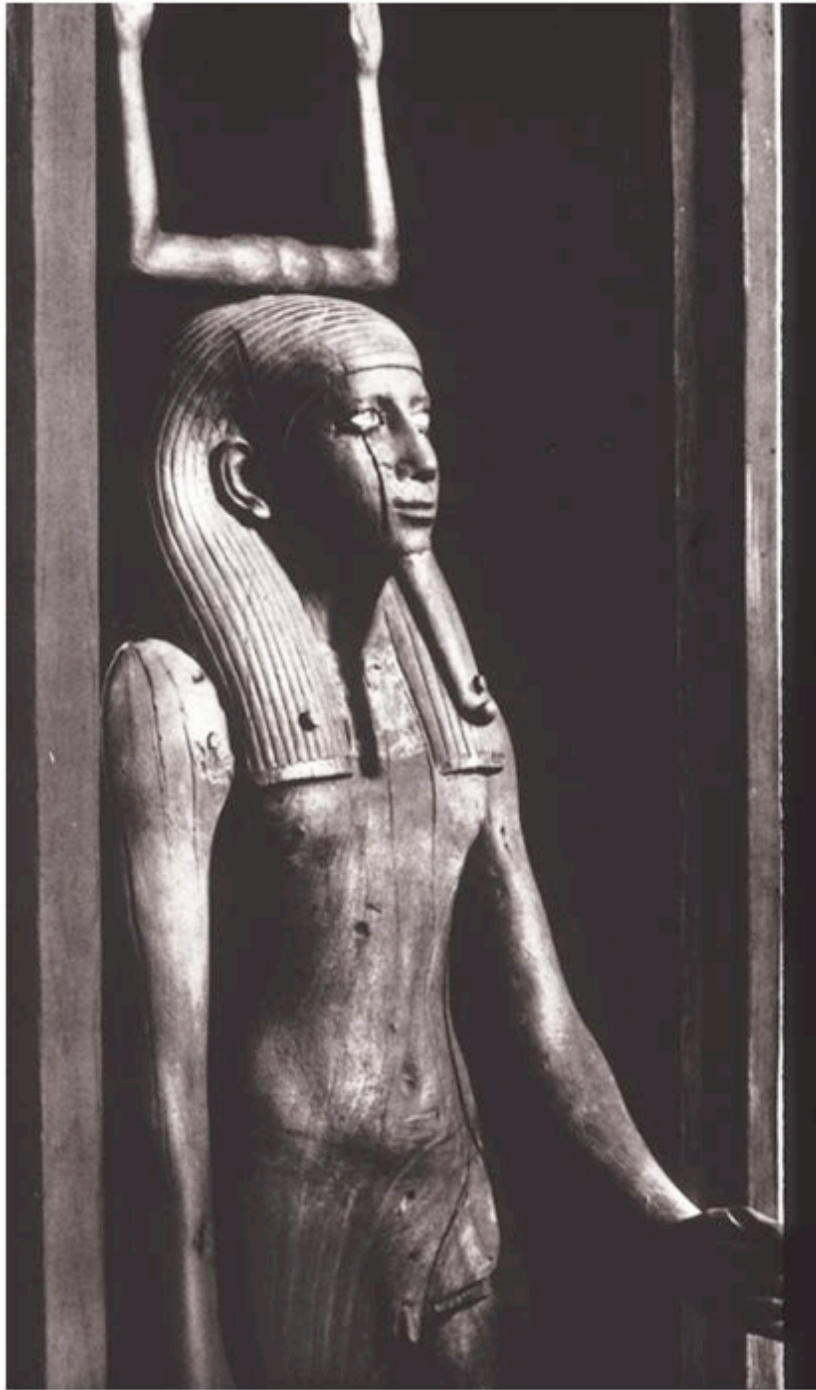
Accession Number:
JE 30948

Height of figure: 170 cm
Width of figure: 27 cm

Oren Siegel









Comparable Statuary (?)



Seated statue of Sebekemsaf I



The British Museum, 1907,0608.1

Michael Bohl

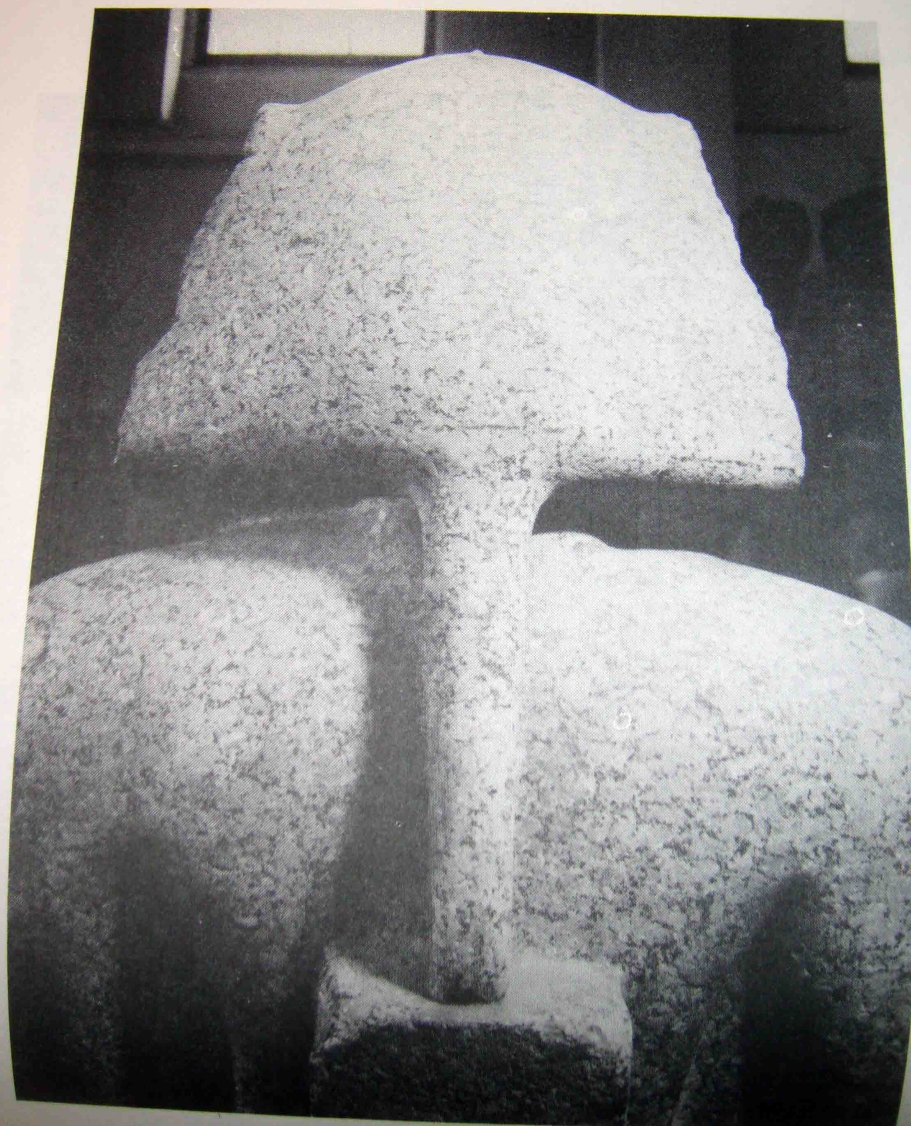


Senwosret III



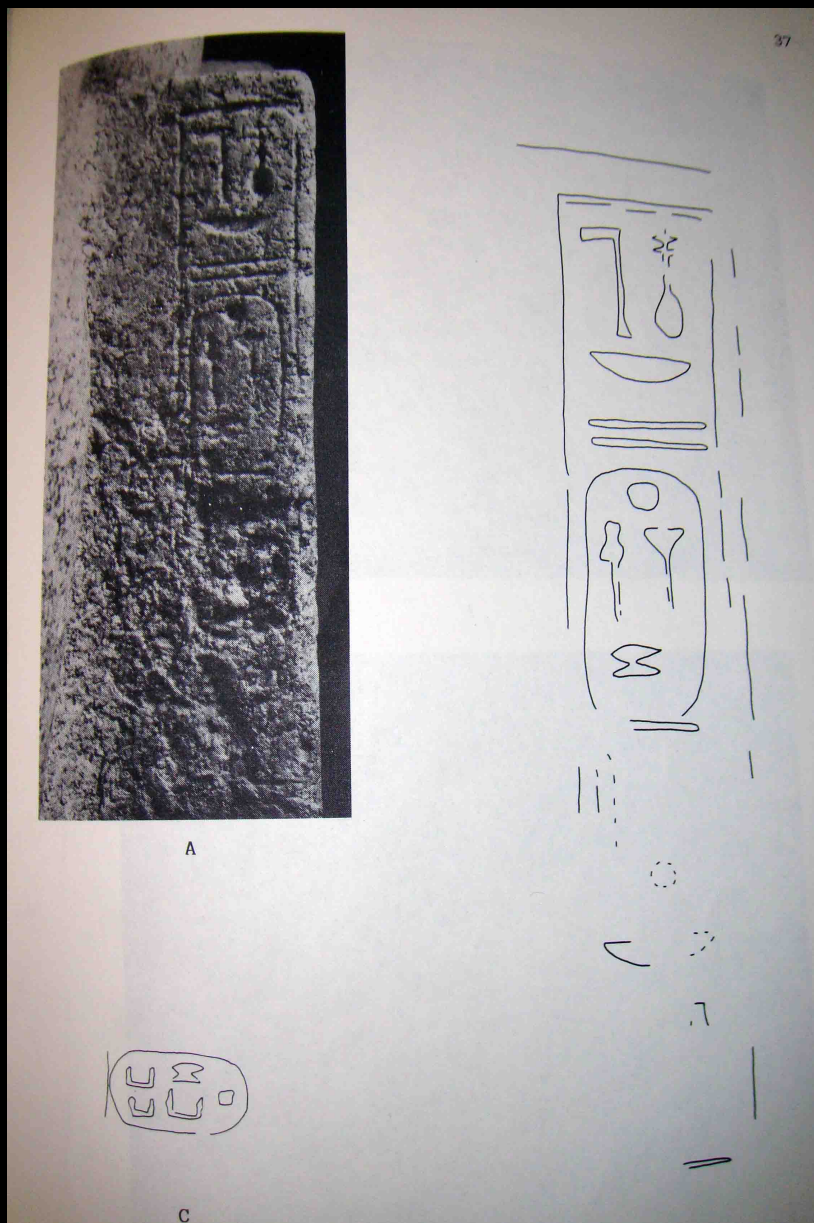
Amenemhat III



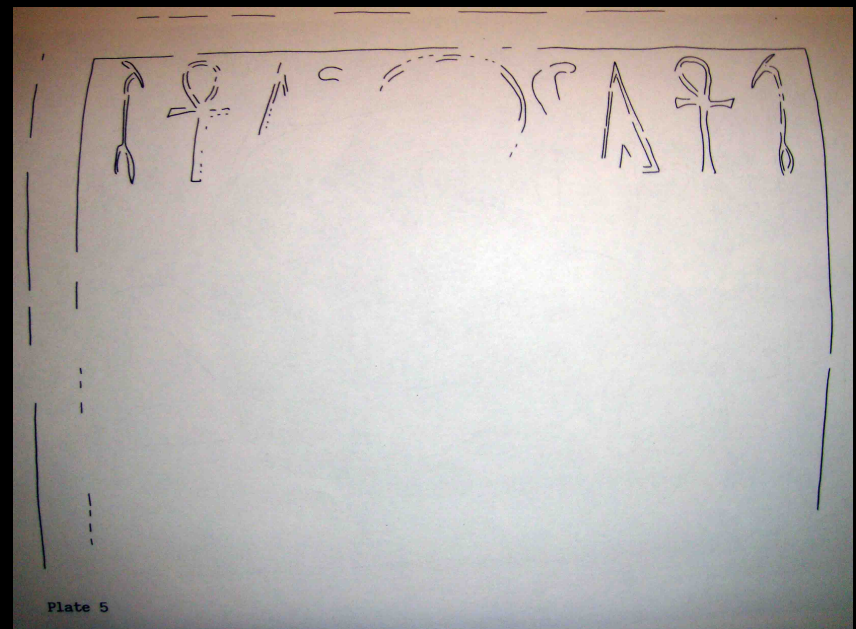
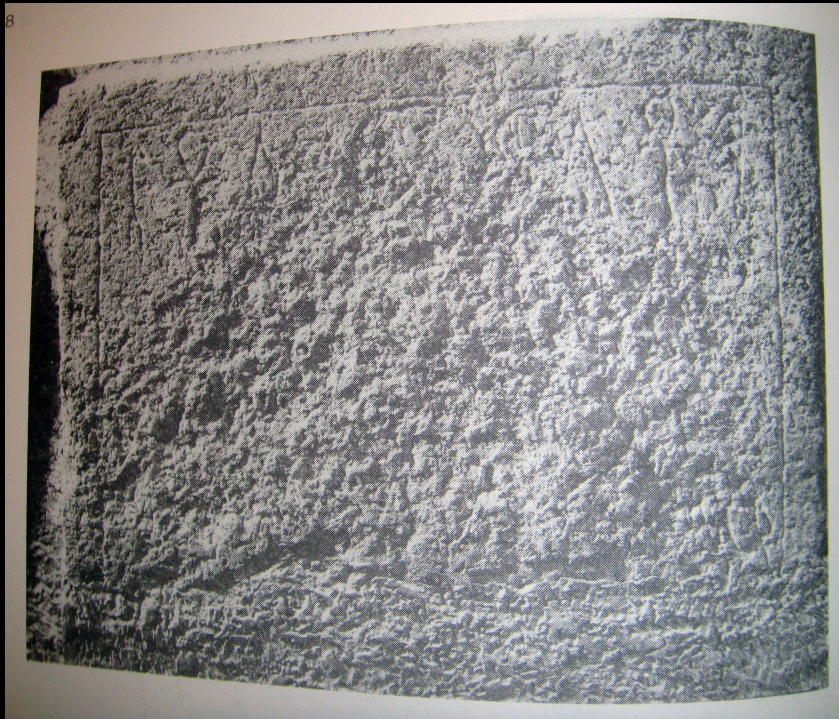


A

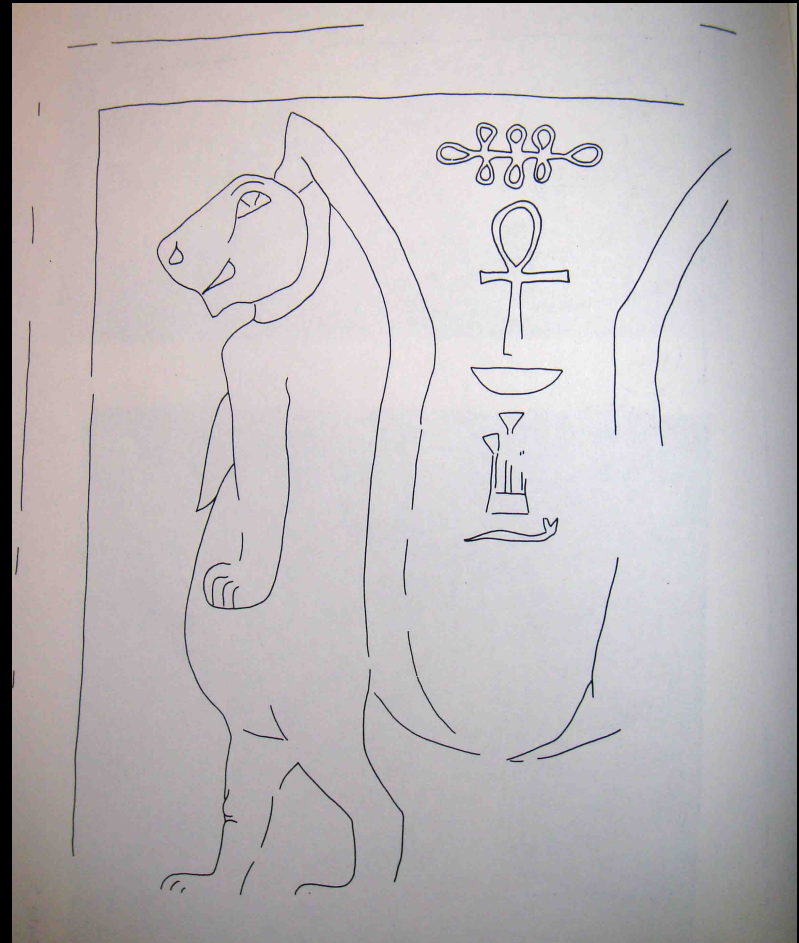
PL



Front



Left side



Back



Sebekemsaf I in the Cairo Museum