

Themes for the Middle Kingdom

Kingship:

- relations to gods, administrators, earlier kings
- co-regency
- royal burial programs
- temple building

Administration

- titles
- location and contents of private tombs
- rise of a “middle class”

Religion

- changes in funerary and temple practice

Lahun

- an example of Egyptian urbanism

International relations

- wars
- trade and tribute
- movements of people

Middle Kingdom Chronology

11th Dynasty (starting in the middle)

Nebhepetre Montuhotep (II)

Montuhotep III

Montuhotep IV

12th Dynasty

Amenemhat I (former vizier?)

Senwosret I (probable co-regency with Amenemhat I)

Amenemhat II (probable co-regency with Senwosret I)

Senwosret II (probable co-regency with Amenemhat II)

Senwosret III

Amenemhat III (probable co-regency with Senwosret III)

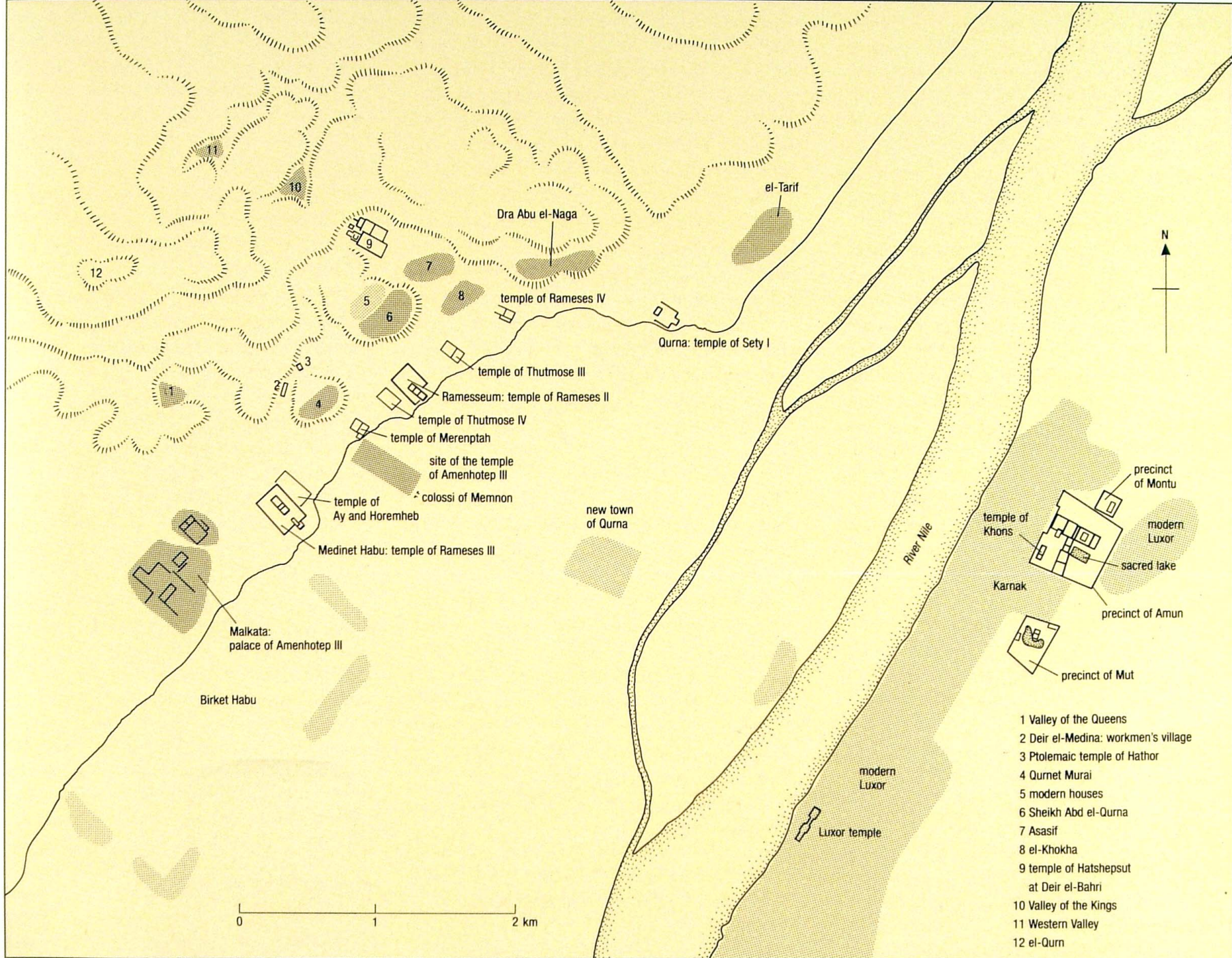
Amenemhat IV

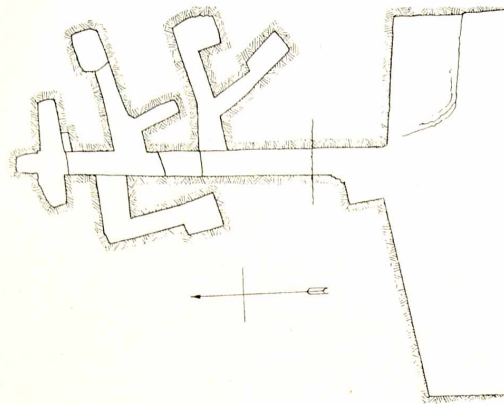
Sobeknefru

13th Dynasty

many kings of whom Neferhotep I and Sobekhotep IV are the best attested

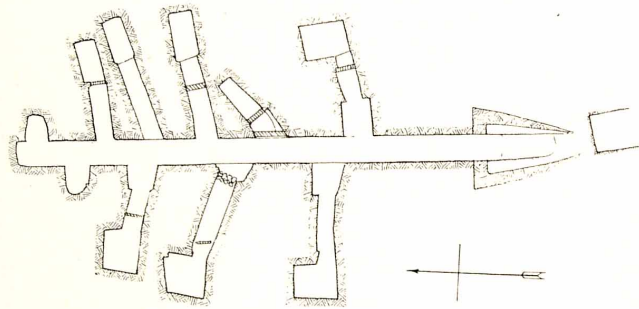




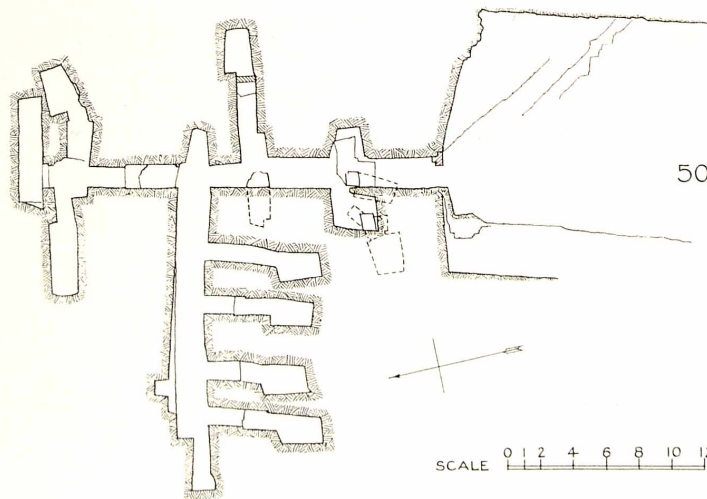


507

Slain soldiers

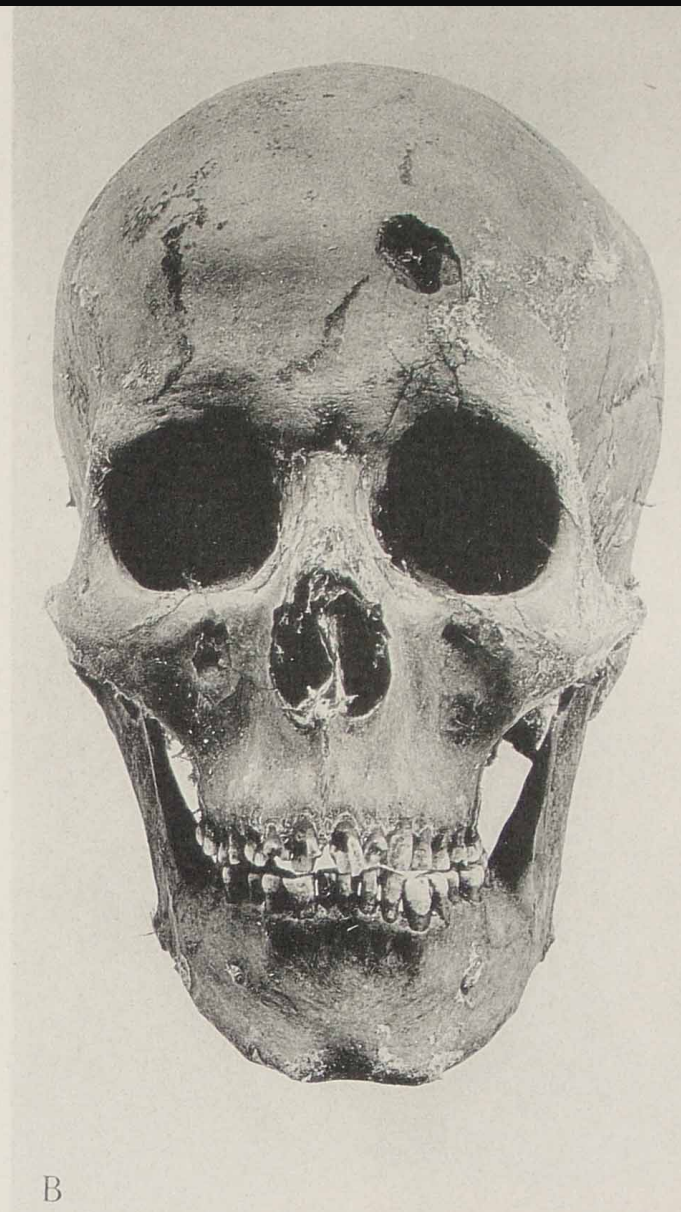
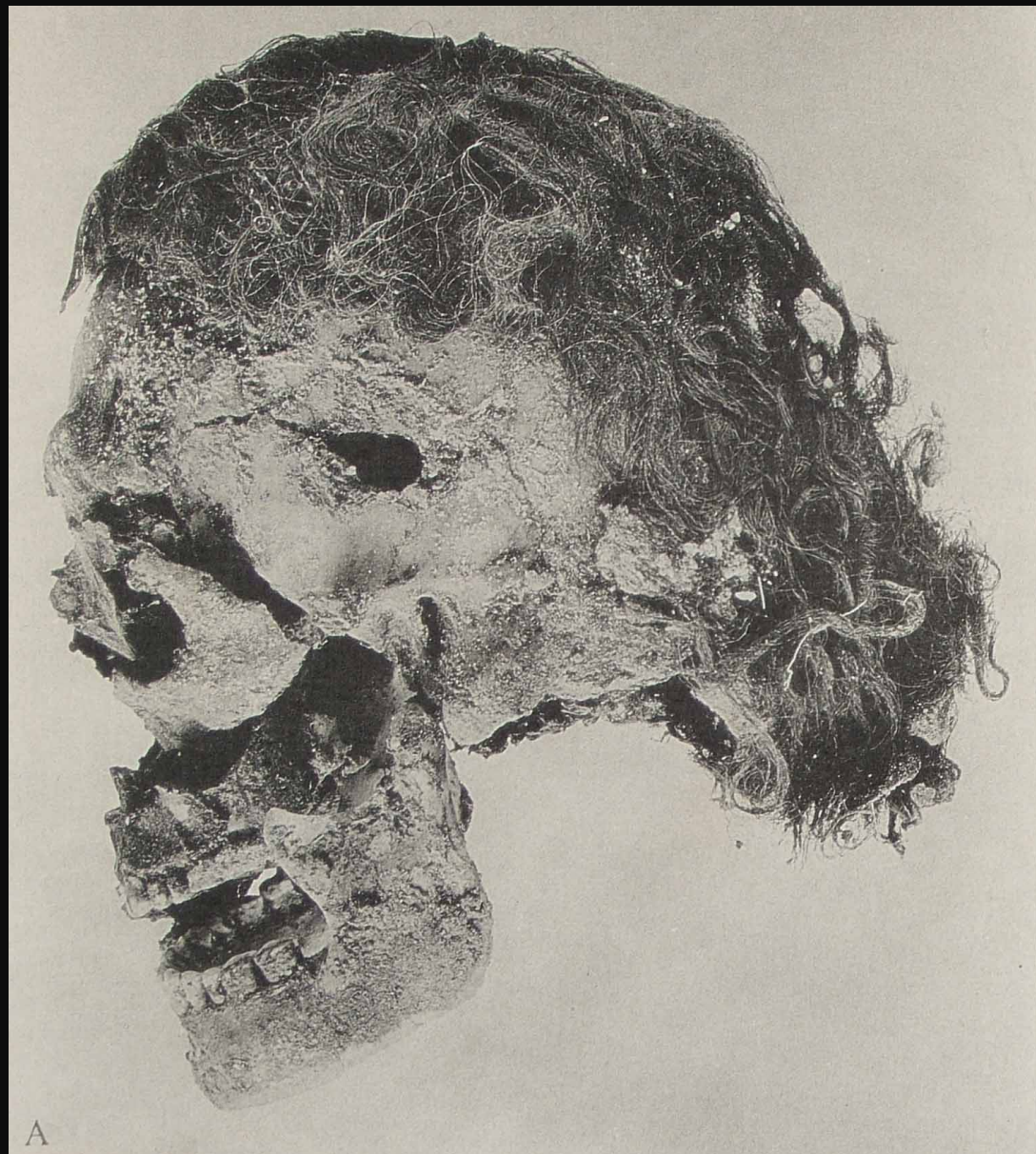


101



506

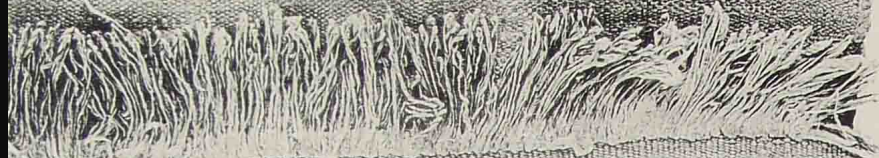
SCALE 0 1 2 4 6 8 10 12 METERS



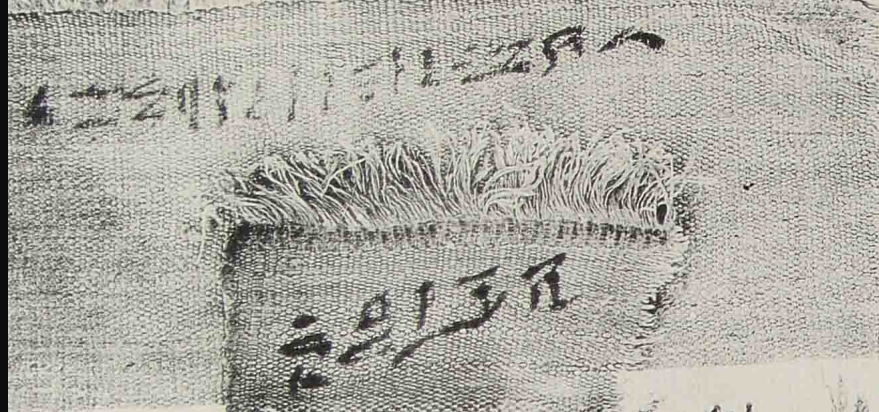




XVI



XVII



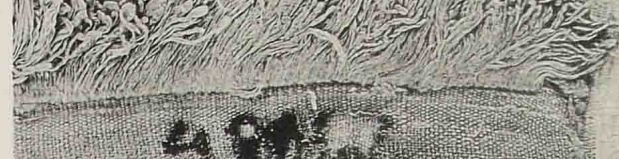
XVIII



XIX

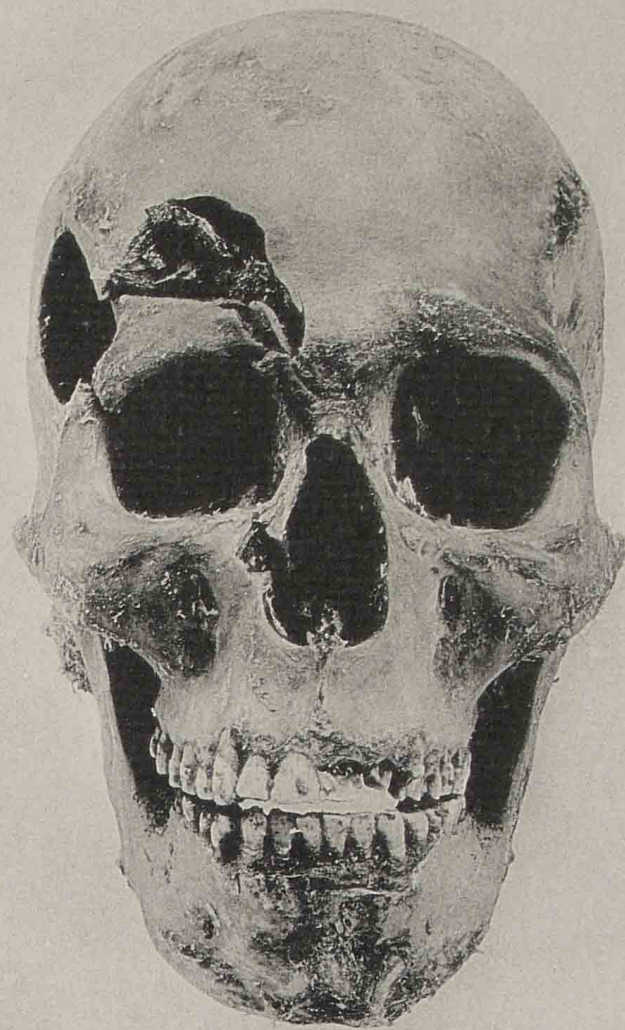


XIII

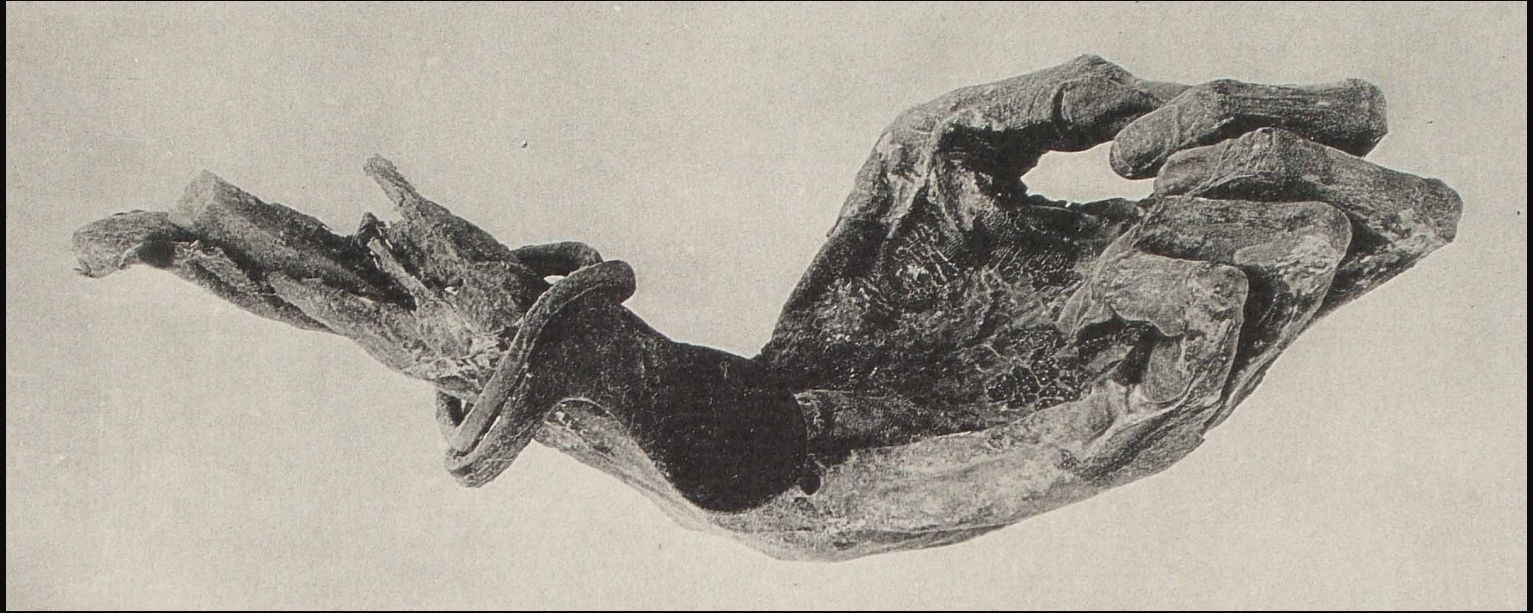
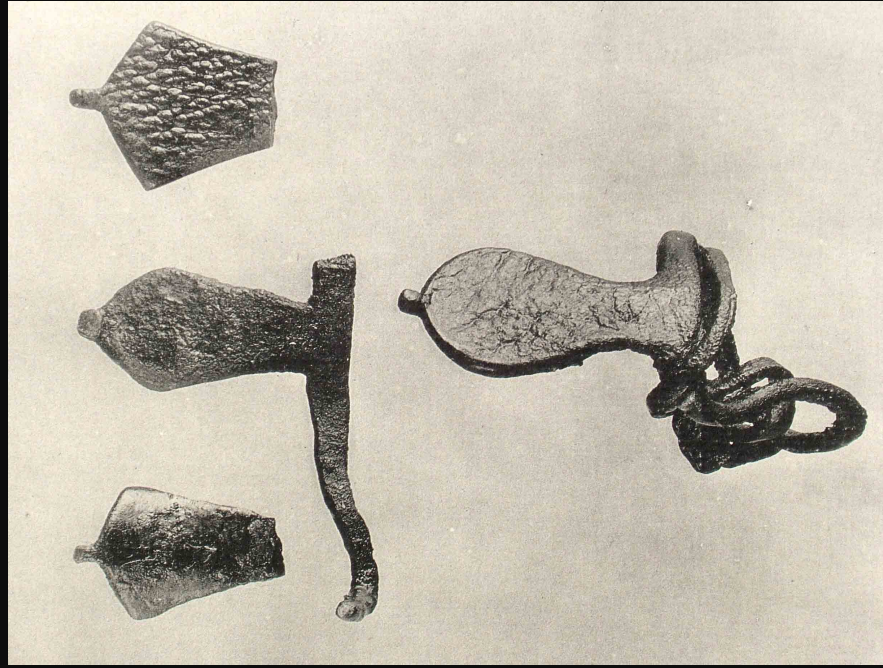


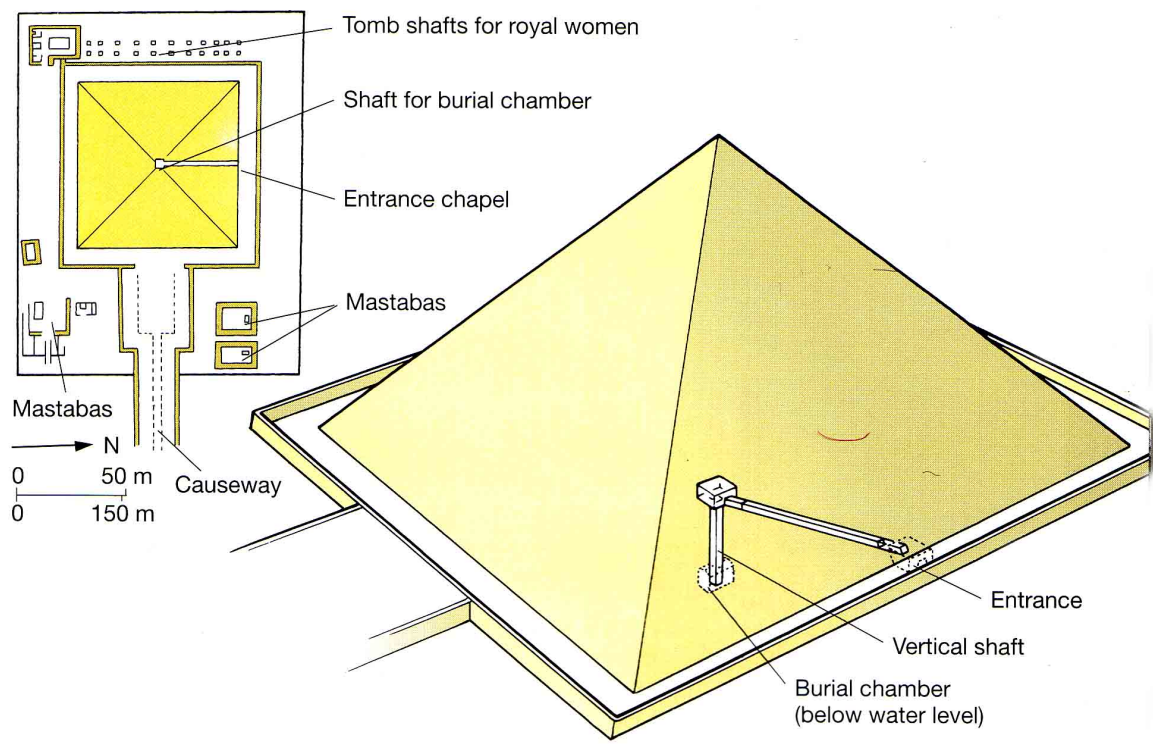
XIV

XV





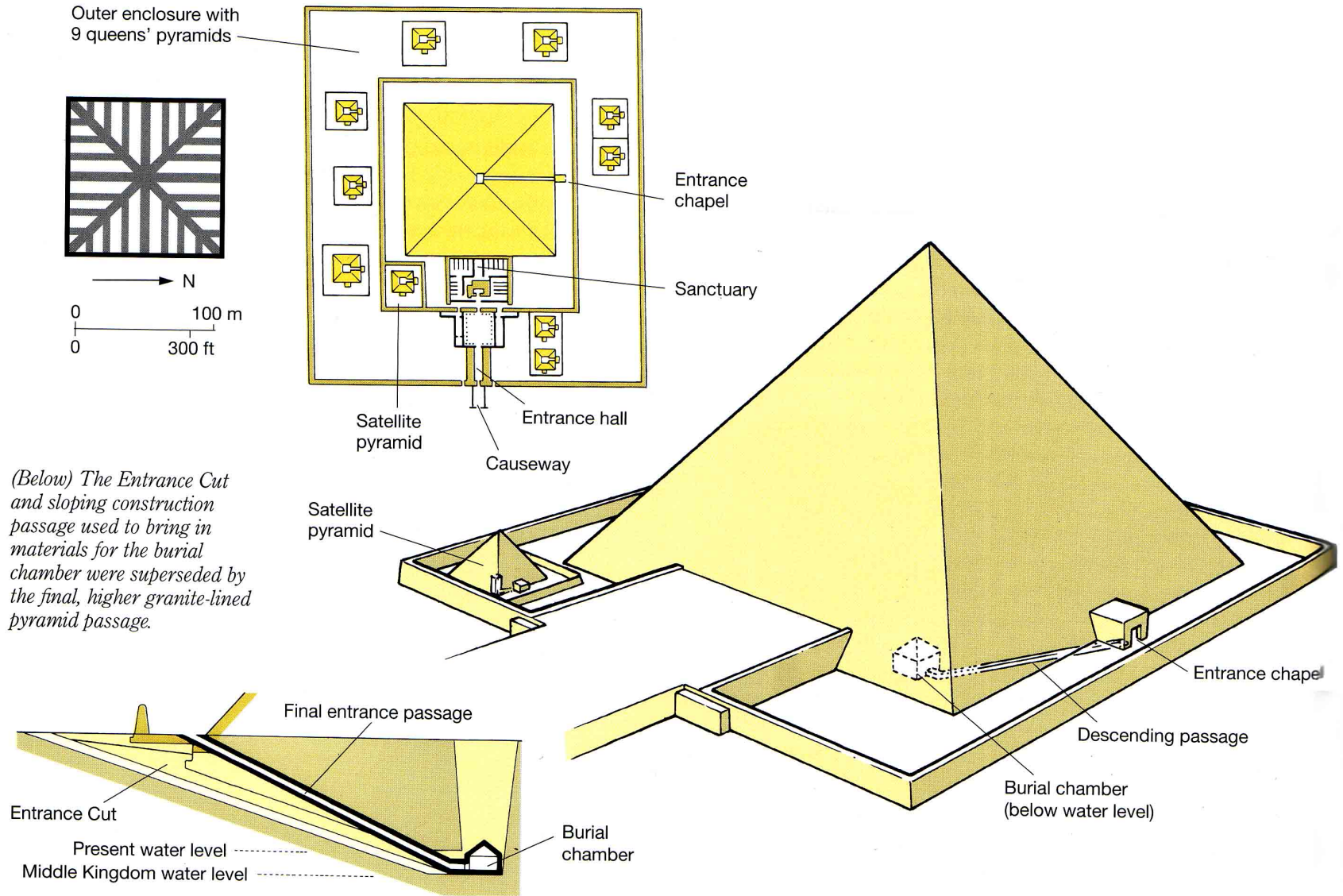




Pyramid Complex of Amenemhat I at Lisht



Reliefs of Amenemhat I

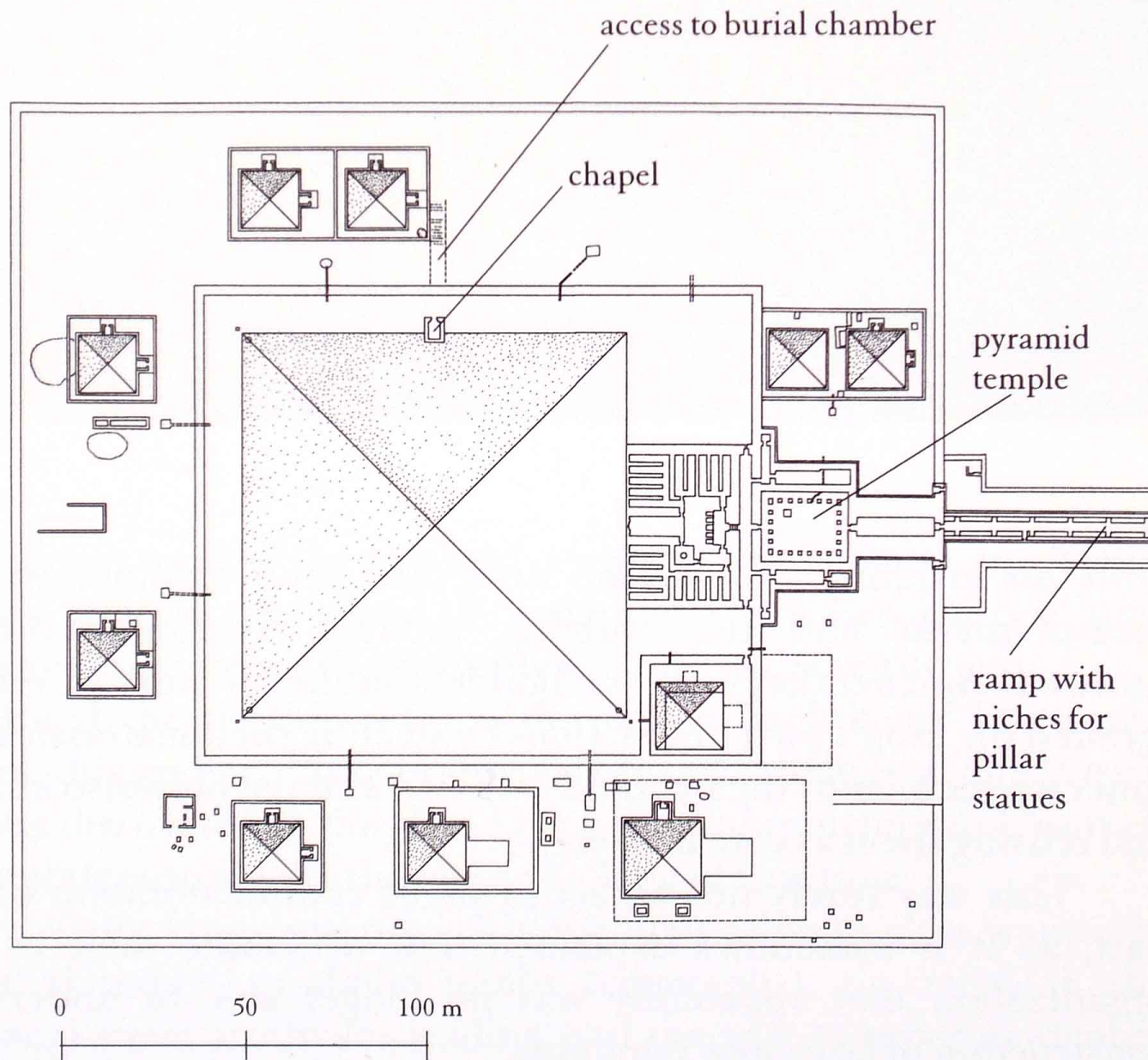


Senwosret I Pyramid Complex at Lisht













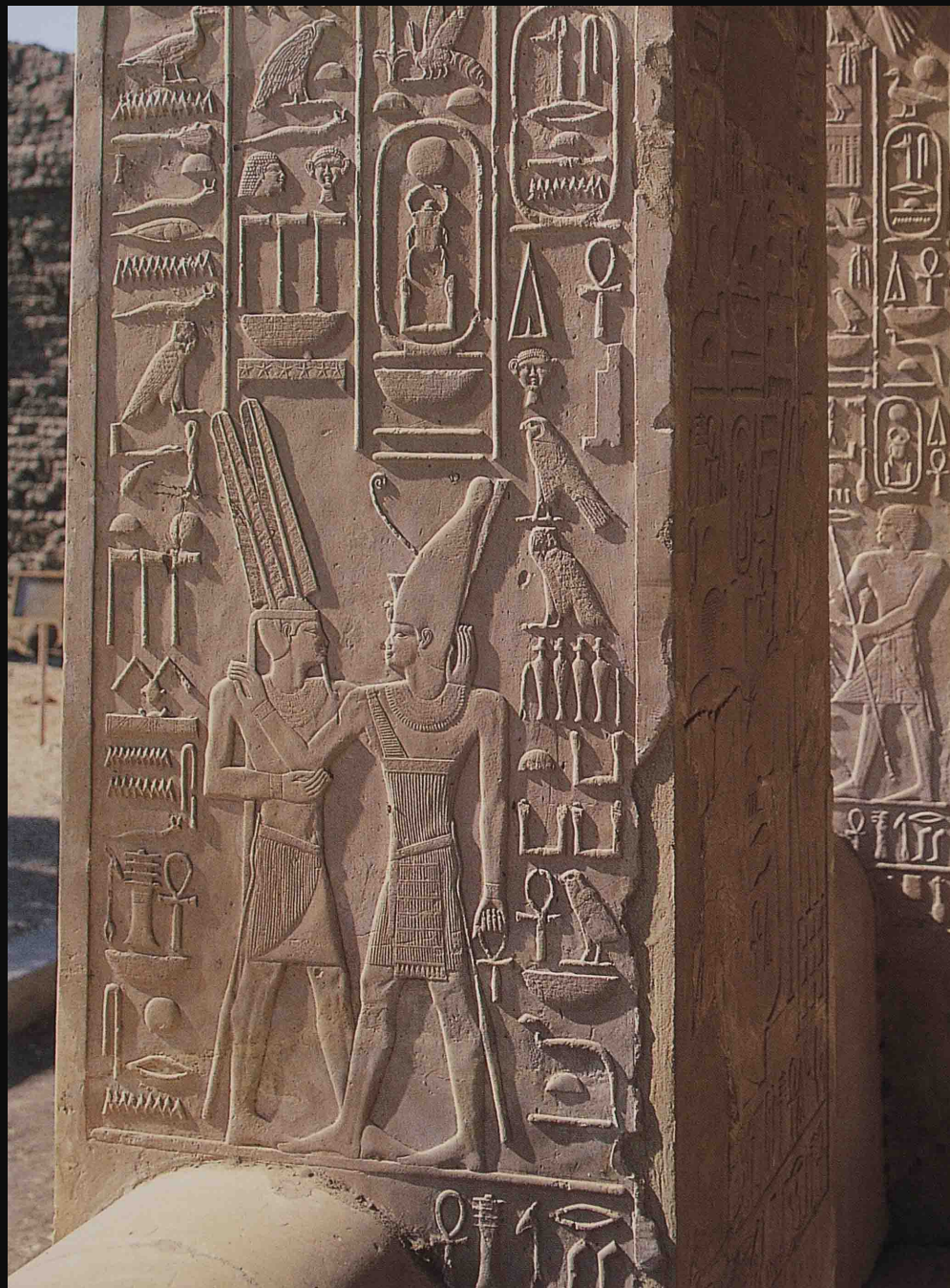
Senwosret I Osirian statues and serekh panels from his pyramid complex at Lisht



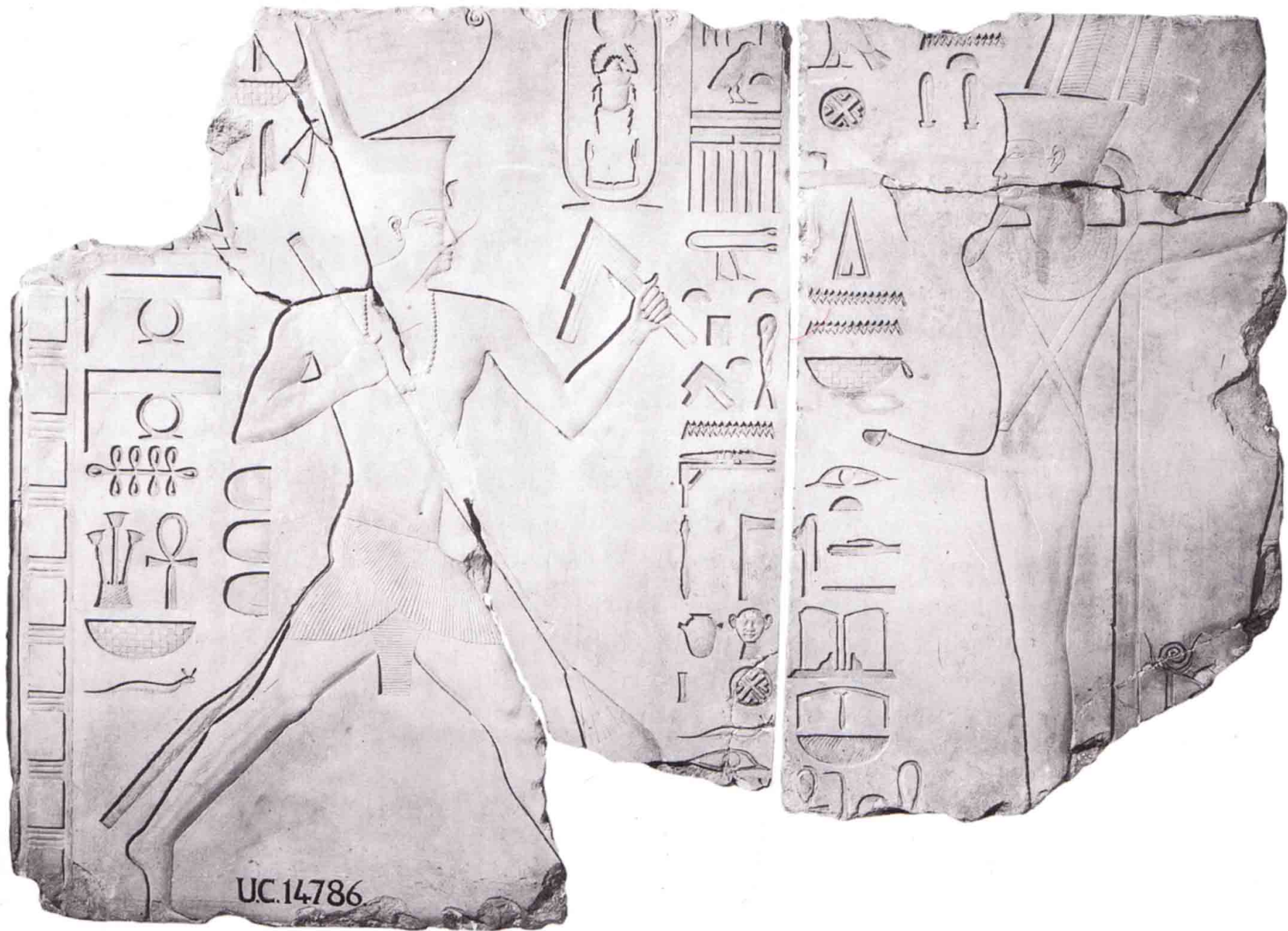












UC.14786

ALTES REICH
Dyn. XII.

Abth. II. Bl. 119.



Ansicht von Nordosten.

Medinet el Faiûm [Krokodilopolis]
Obelisk von Begig.



Durchschnitt der Spitze.

Senwosret I stela from
Crocodilopolis, Faiyum

Shows the king before
various gods

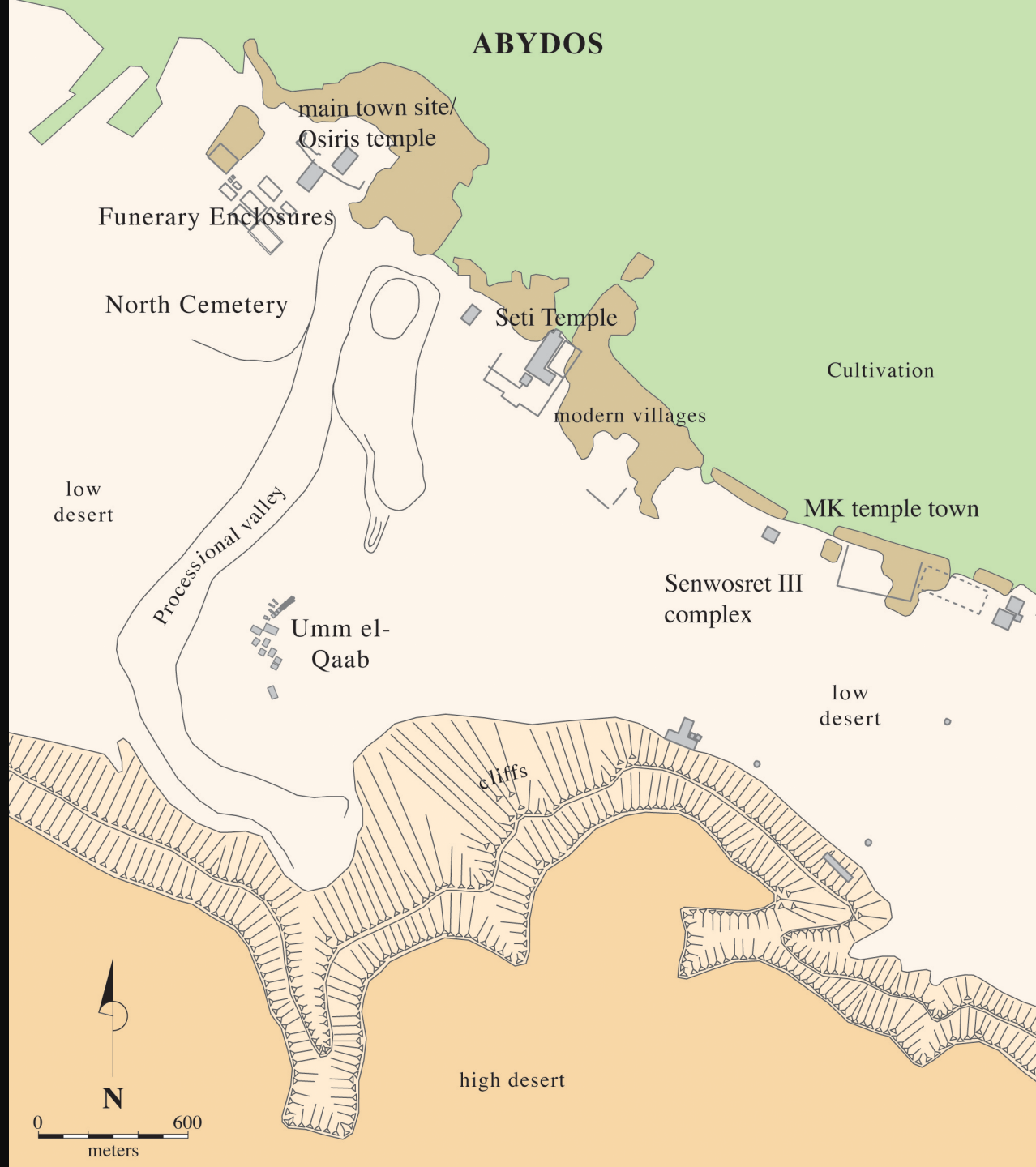


Excerpt from the Berlin Leather Roll (NK copy of a MK temple text):

Year 3, month 3 of Akhet, day 8, under the majesty of the king of Upper and Lower Egypt Kheperkare, Son of Ra Senwosret (True of voice), may he live for ever in eternity.

The king appeared with the double-crown; and a sitting took place in the Hall, a consultation with his followers, the Friends of the Palace and the officials of the private chambers, with commands for their hearing, a consultation for their instruction. See, my Majesty is planning works, being mindful of a deed of excellence for the future. I will make a monument, and lay down durable decrees for Harakhti, as he bore me to do what should be done for him, to create what he commanded done. He placed me as shepherd of this land; he knew who would gather it together for him...

And these friends said, answering to their god: Utterance is in your mouth, and perception around you! O sovereign (lph) whatever is to happen, that is your plan: the royal appearance as the uniter of the two lands to stretch the cord in your temple. It is noble to look to tomorrow, as something excellent for one's lifetime... Great are you, as you make monuments in Iunu, the sanctuary of the gods, before your father, the lord of the Great Mansion, Atum, the bull of the ennead. Create your mansion, provide for the offering stone, that it shall do service for the statue and be well disposed for your image for the fullness of all time... The rope was let loose, the line put on the ground, made into this temple.



ABYDOS

main town site/
Osiris temple

Funerary Enclosures

North Cemetery

Seti Temple

modern villages

Cultivation

MK temple town

Senwosret III
complex

Umm el-
Qaab

low
desert

cliffs

high desert



0 600
meters





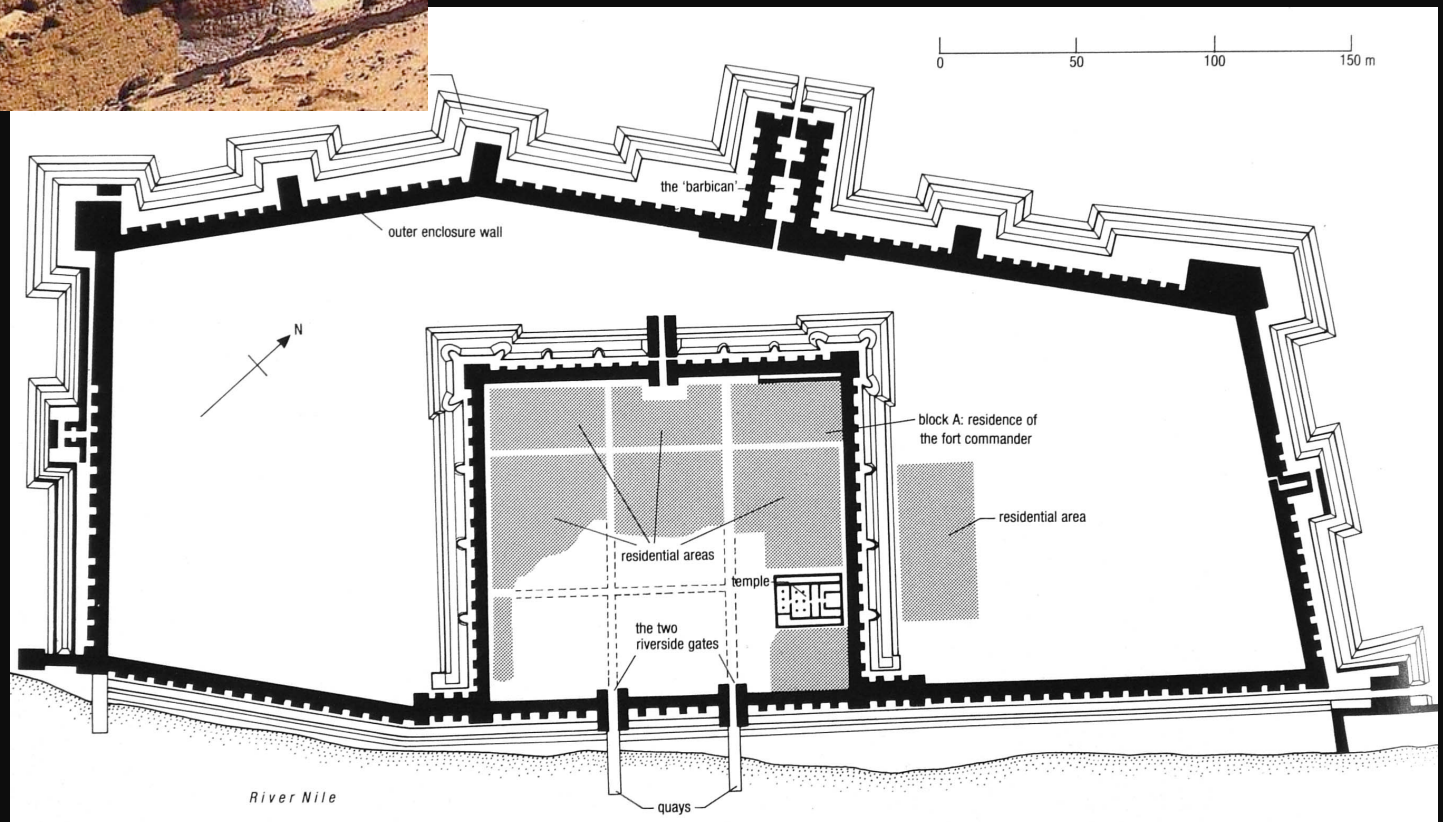
Hieroglyphic text arranged in 12 vertical columns, reading from right to left. The text is carved in a stylized Egyptian script, likely representing a religious or funerary inscription. The columns are separated by thin vertical lines, and the overall layout is rectangular and well-defined.







Fortress at Buhen





Amenemhat II
 Poorly preserved and
 excavated pyramid at
 Dahshur; an enigmatic king

Amenemhat II annals
from Memphis



Item 7: 'offering divine offerings when they are set up'

Item 8: 'despatching an expedition to Khenty-she' (Khenty-she means 'the one in front of the lake', and has the mountain-land determinative used for foreign lands - it has been identified as Lebanon from the products brought back by the expedition, recorded later in the inscription) (line 7)

Item 9: recruiting manpower

Item 10: 'despatching an expedition with an overseer of troops to destroy Syrian Iwa [...]'

Item 11: donation of cult equipment from the 'king's domain' to the cult of the god Mont in Iun(y) (Armant) and Djert(y) (Tod), each receiving a vessel of 'Asiatic copper'

Item 12: 'following the goddess [..] to her temple in Wadi Natrun'

Item 13: 'making a wood statue of the overseer of Wadi Natrun dwellers Ameny permitted (?) to him in Djefa-Amenemhat' (the place-name Djefa-Amenemhat has the hieroglyphic determinatives pyramid and town, and is probably therefore a settlement, small or large, near the pyramid of Amenemhat II at Dahshur) (line 10)

Item 14: arrival of deputation from Kush and Webat-sepet (Nubian Nile Valley and desert valleys), and record of the produce brought by them (lines 11-12)

Item 15: 'arrival in obeisance of the children of rulers of Syria, bringing with them...' (followed by list of produce) (lines 12-13)

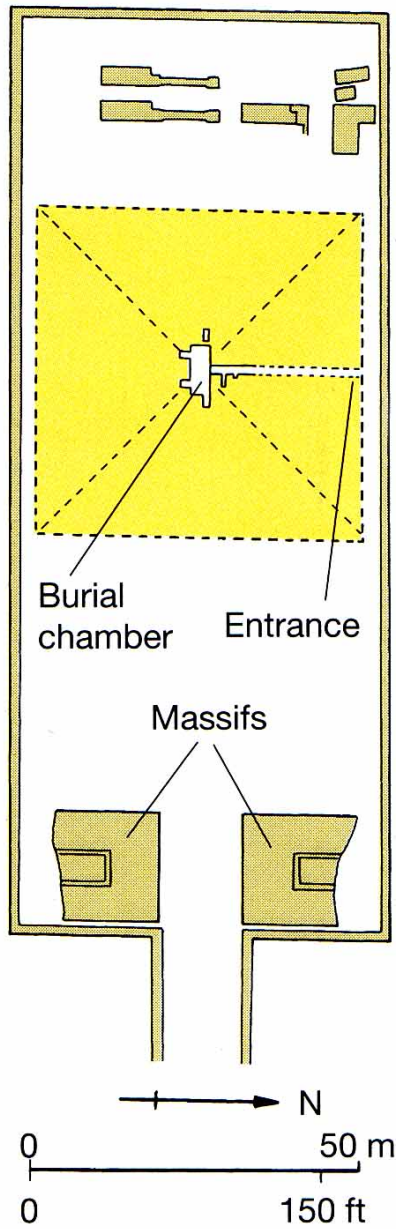


"Tod Treasure"

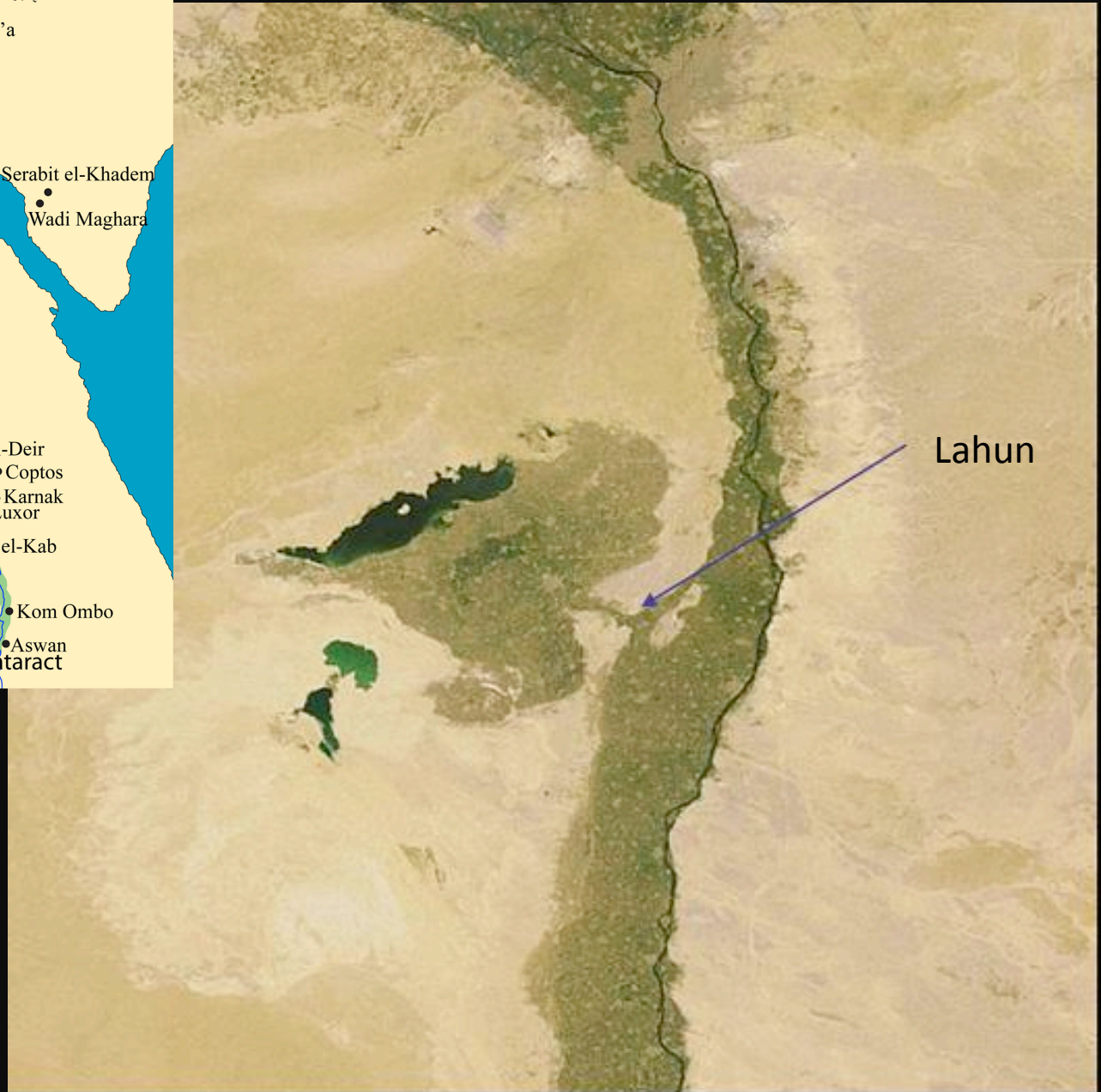
Silver bowls from the Levant and Aegean, gold, lapis in copper boxes with the name of Amenemhat II on them

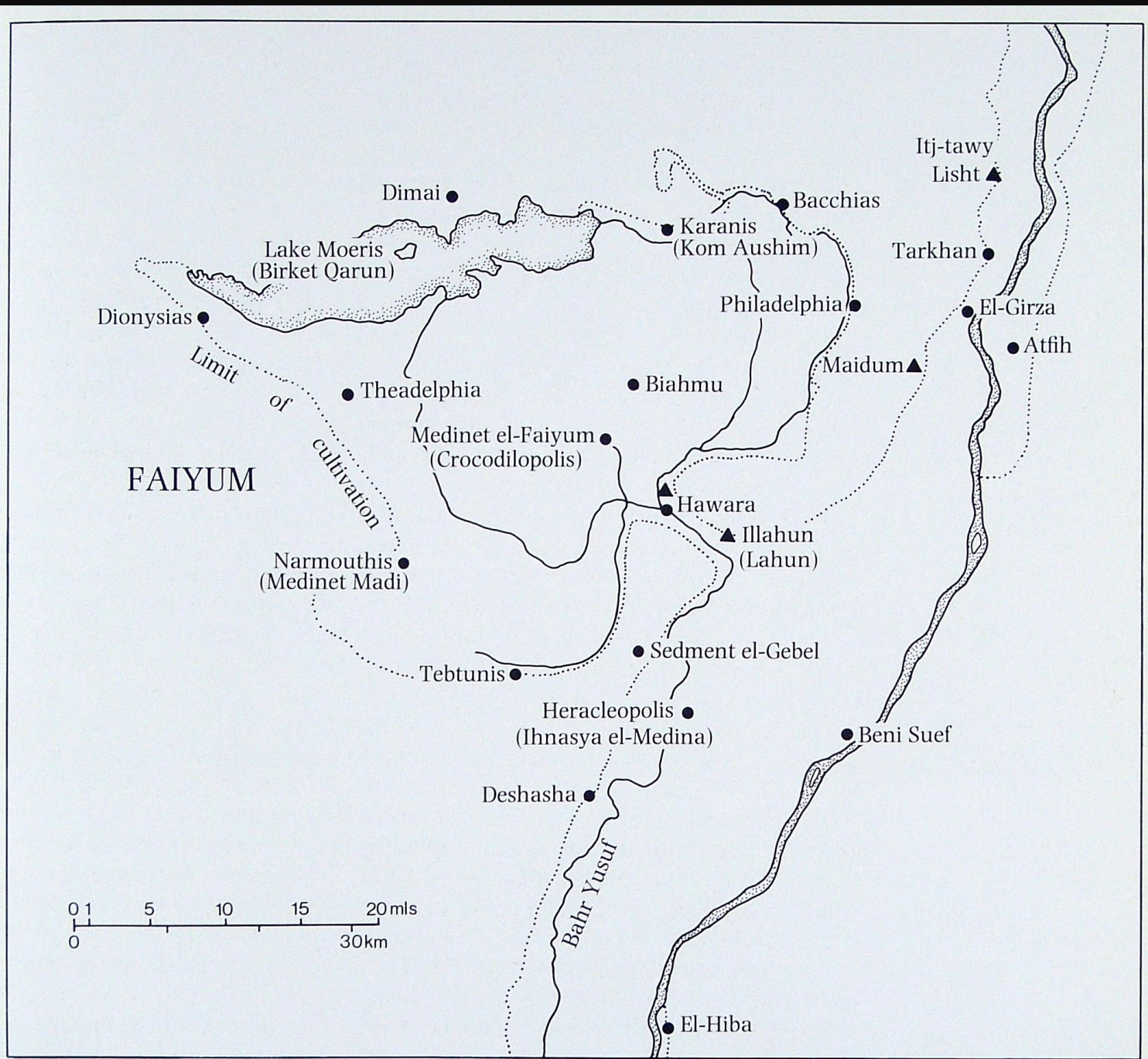


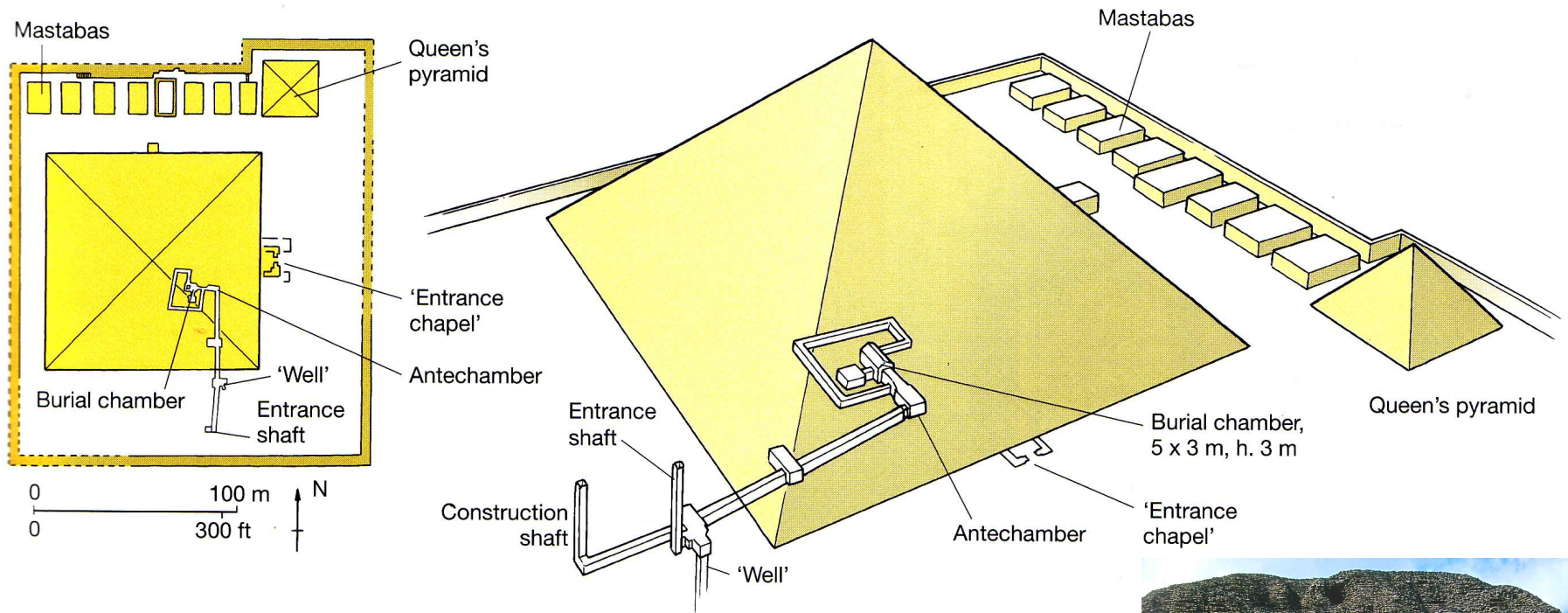
Amenemhat II's Pyramid Complex at Dahshur



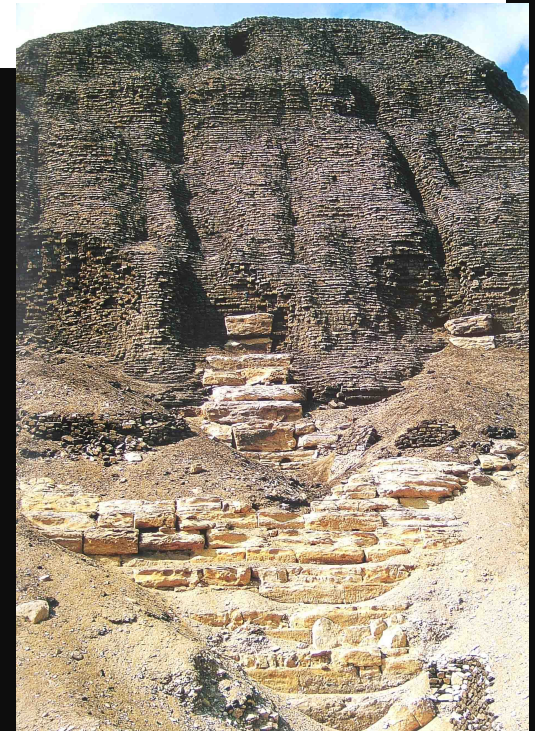


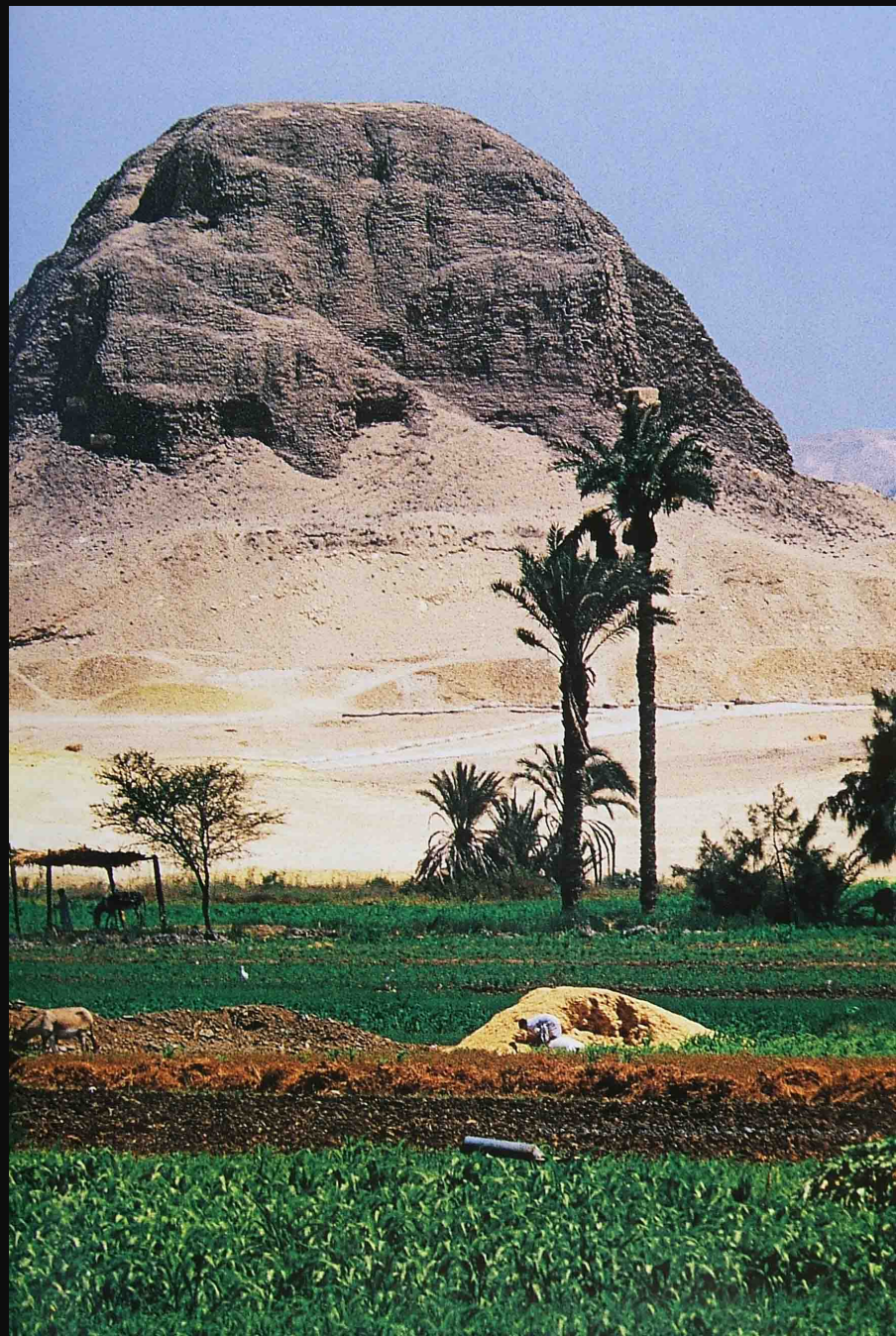






Senwosret II's pyramid at Lahun



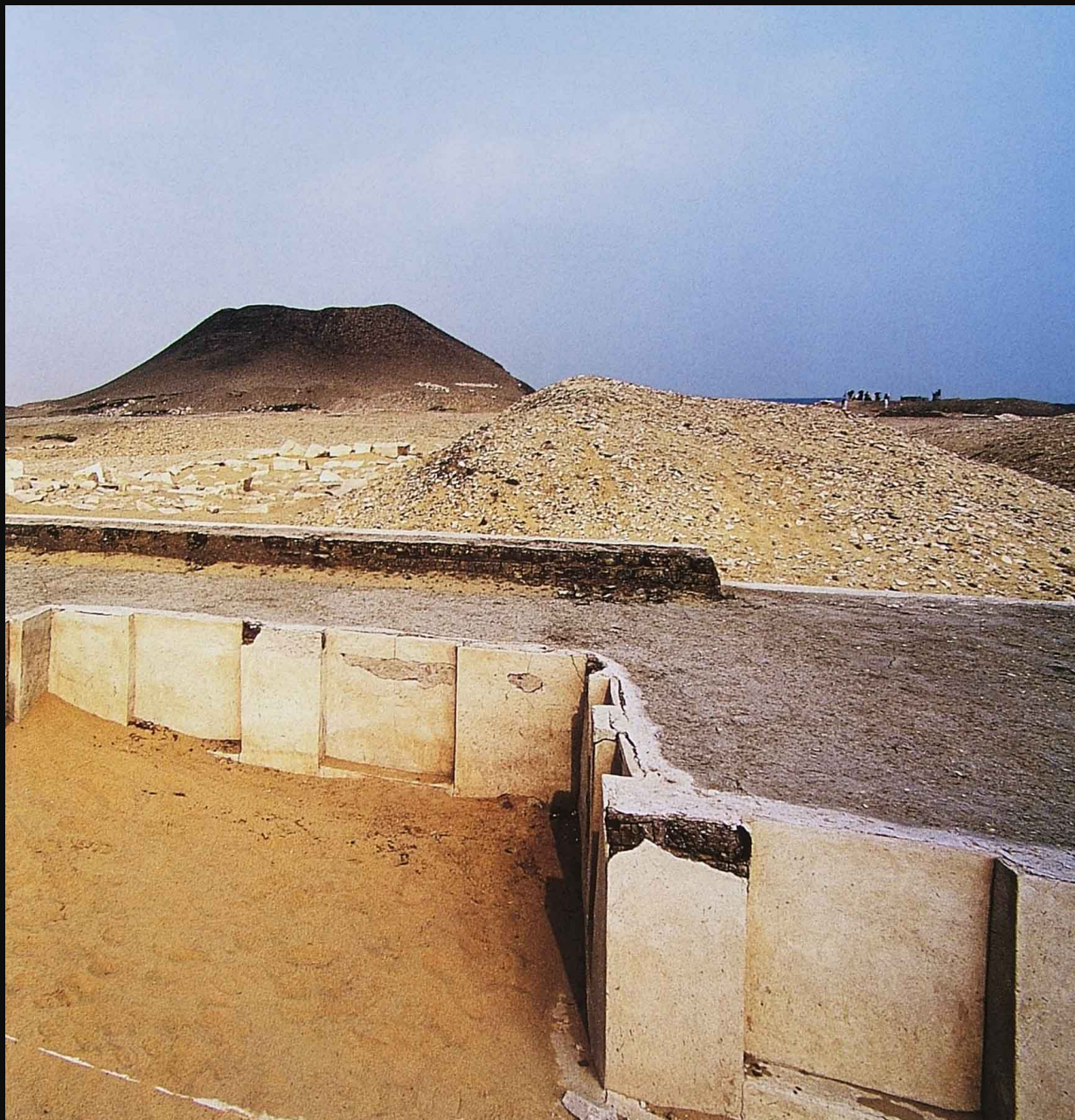




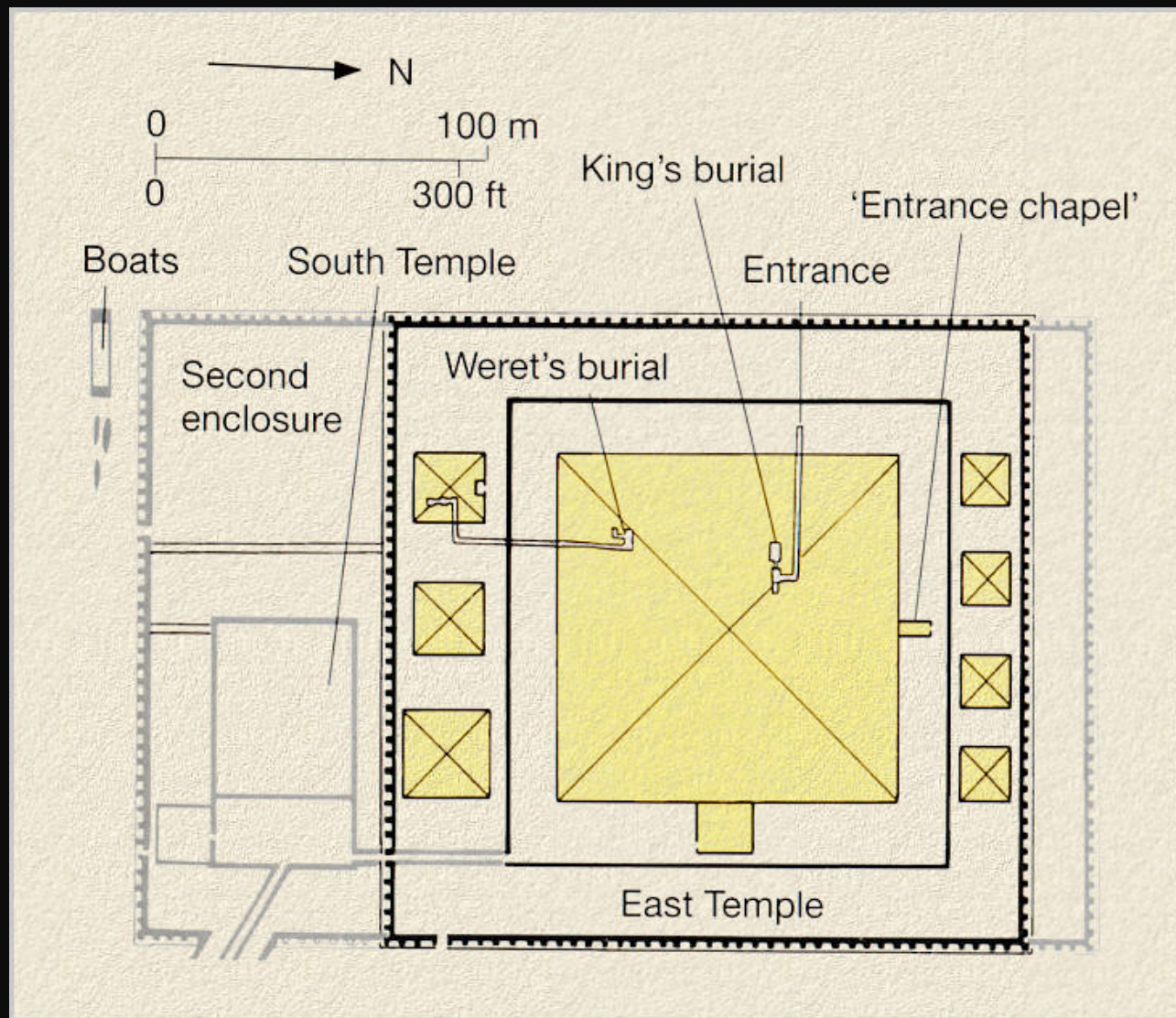


Jewelry of Princess
Sithathoriunet from Lahun

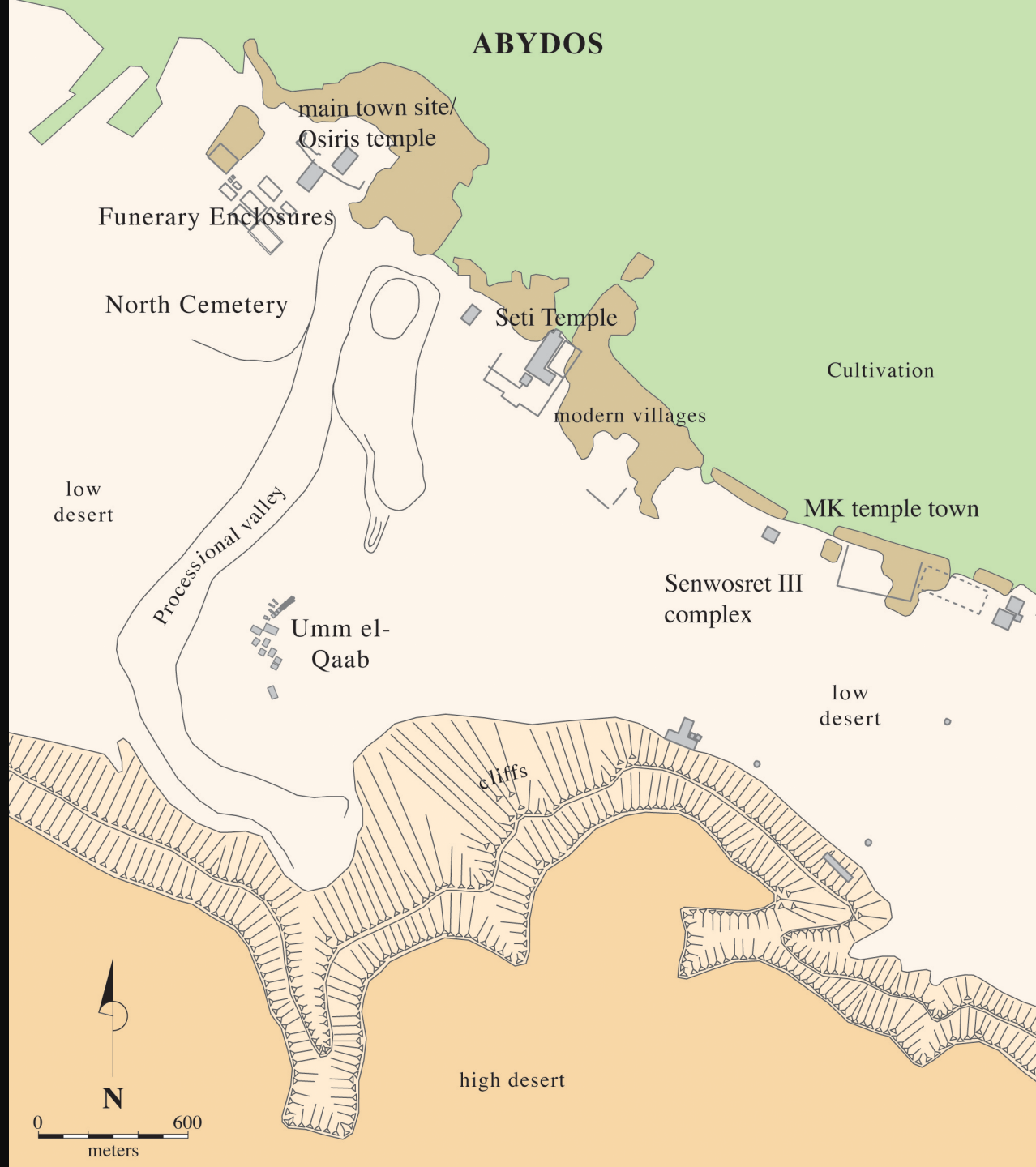




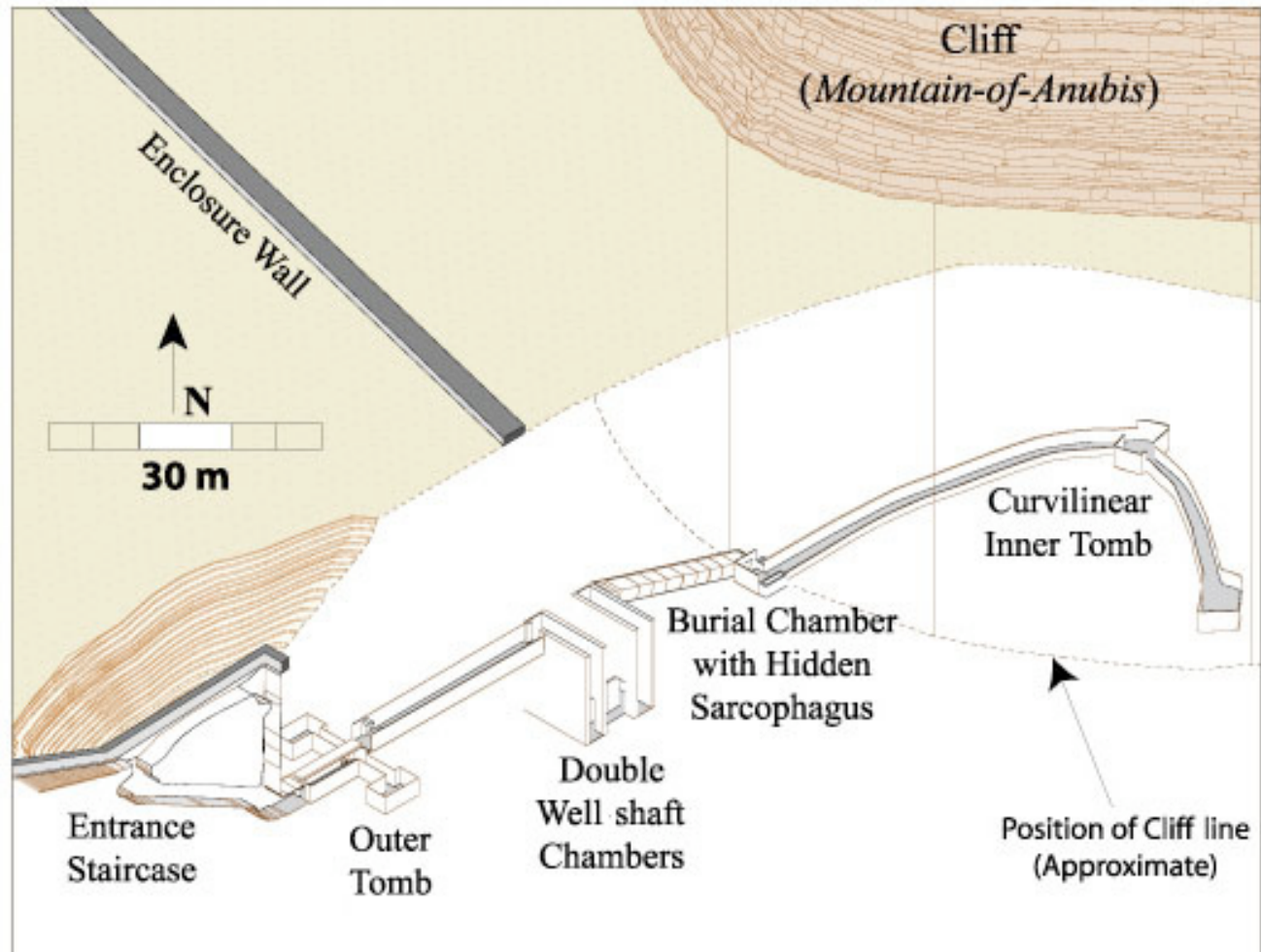
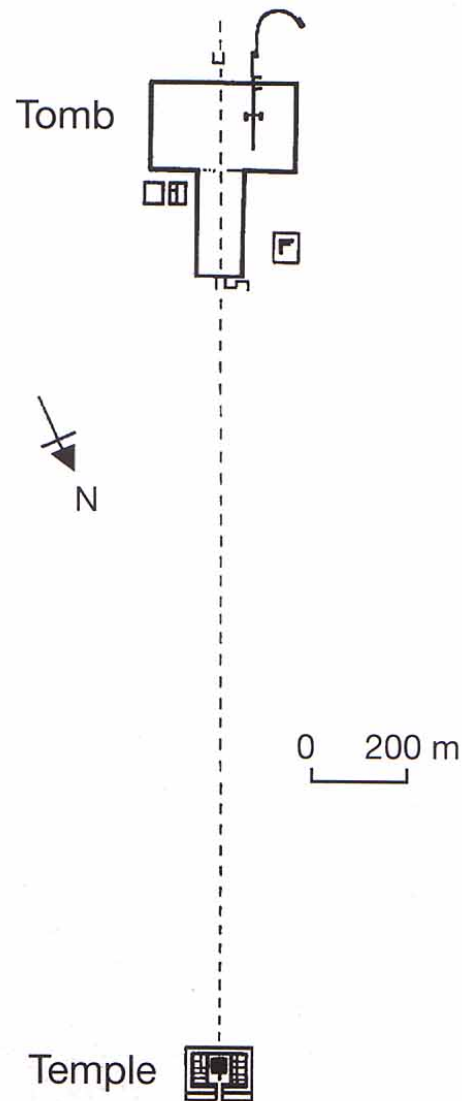
Pyramid of Senwosret III at Dahshur



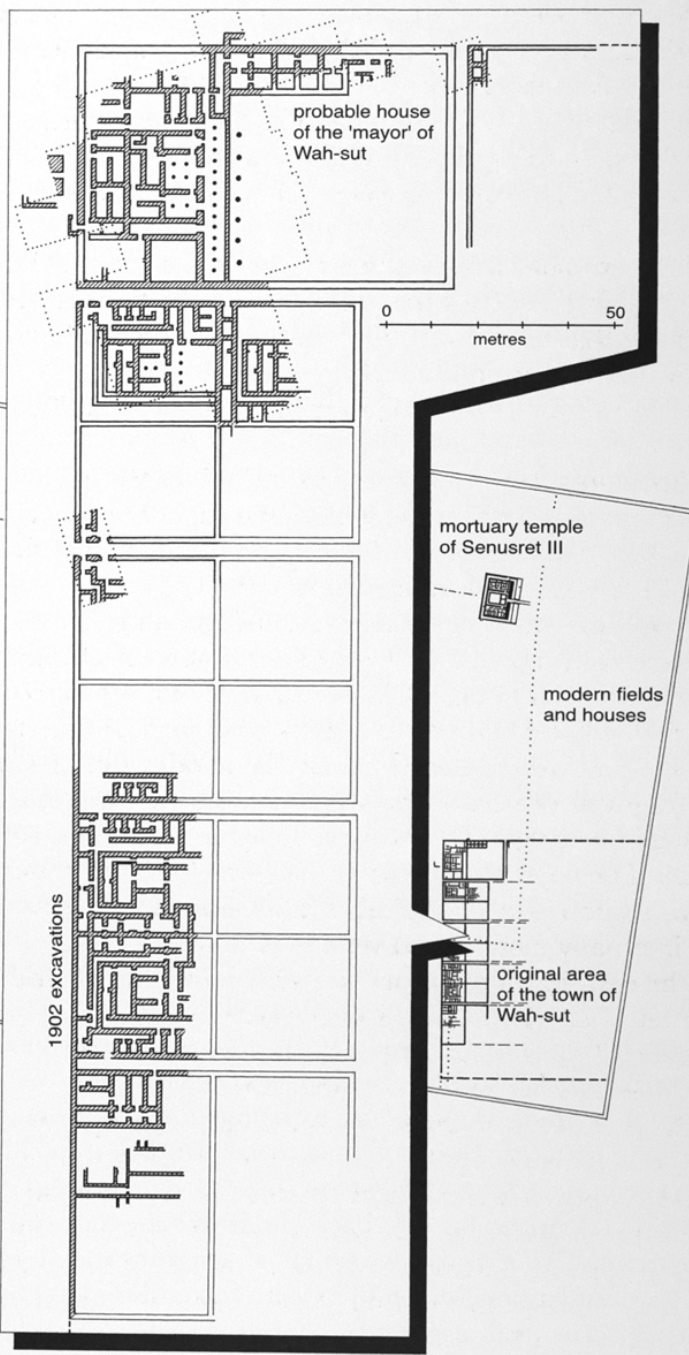
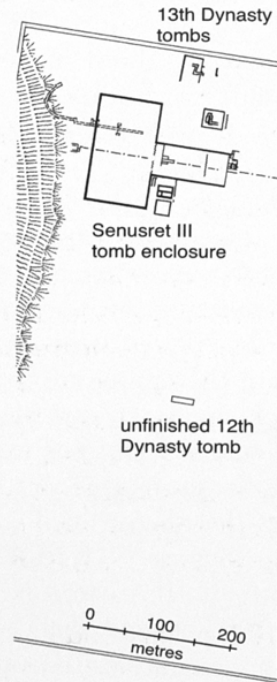
Senwosret III's pyramid complex at Dahshur



Senwosret III at Abydos

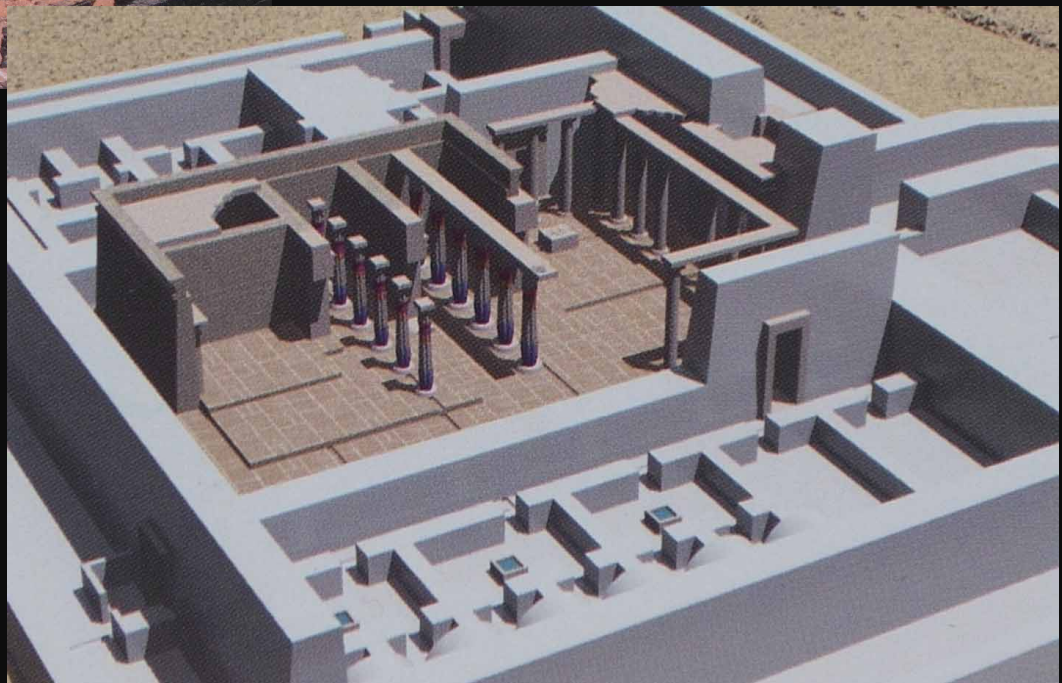


ABYDOS SOUTH





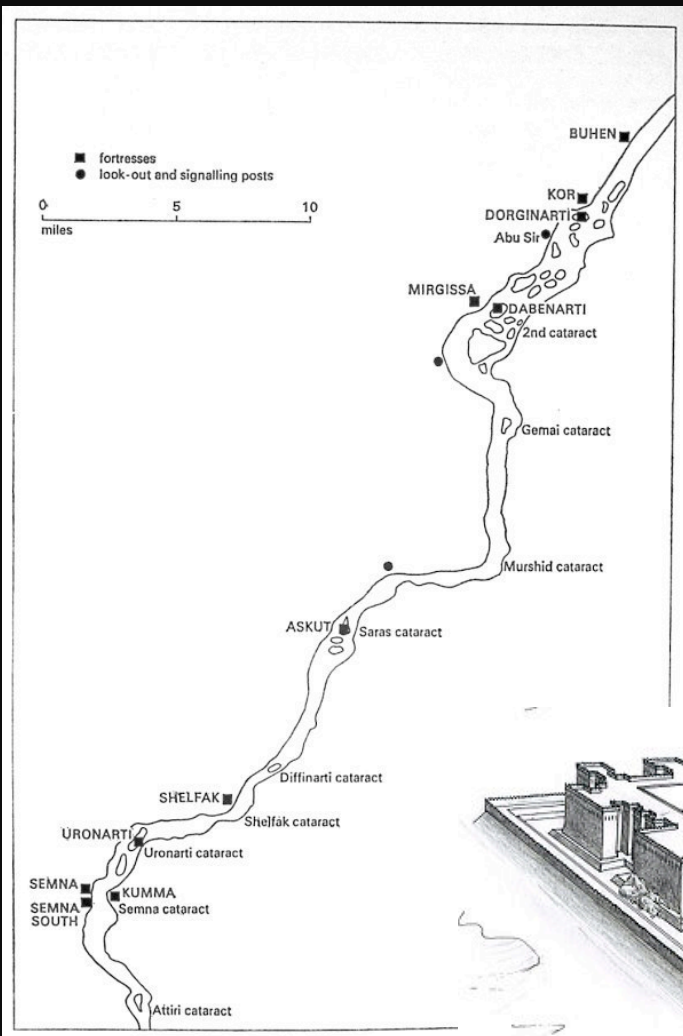
Senwosret III mortuary
temple at Abydos



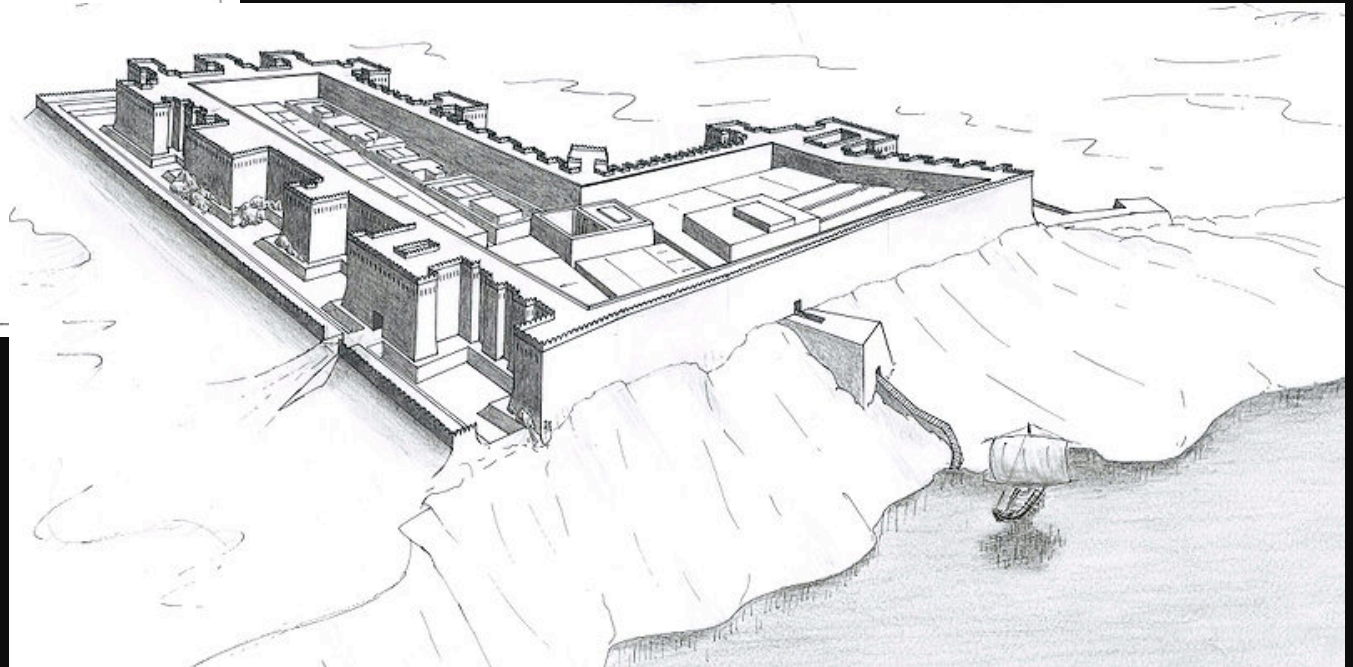
Sculpture of Senwosret III







Map of the Second Cataract showing locations of fortresses of the Middle Kingdom;
reconstruction of Semna fortress (below)





Fortress at Buhen

