



Tribes and States

Social relations and socio-political
organization of Arab Society

Elements of Group Cohesion/'*asabiyya*

- Kinship (real or fictive)
- The Gods
- Monarchs
- Trade Pacts (*Ilaf*)
- The land
- Shared labor
- Commensality

Maximal Lineage

I

A

B

1

2

3

4

a

b

c

d

e

f

g

h

i

ii

iii

iv

v

vi

vii

viii

ix

x

xi

xii

xiii

xiv

xv

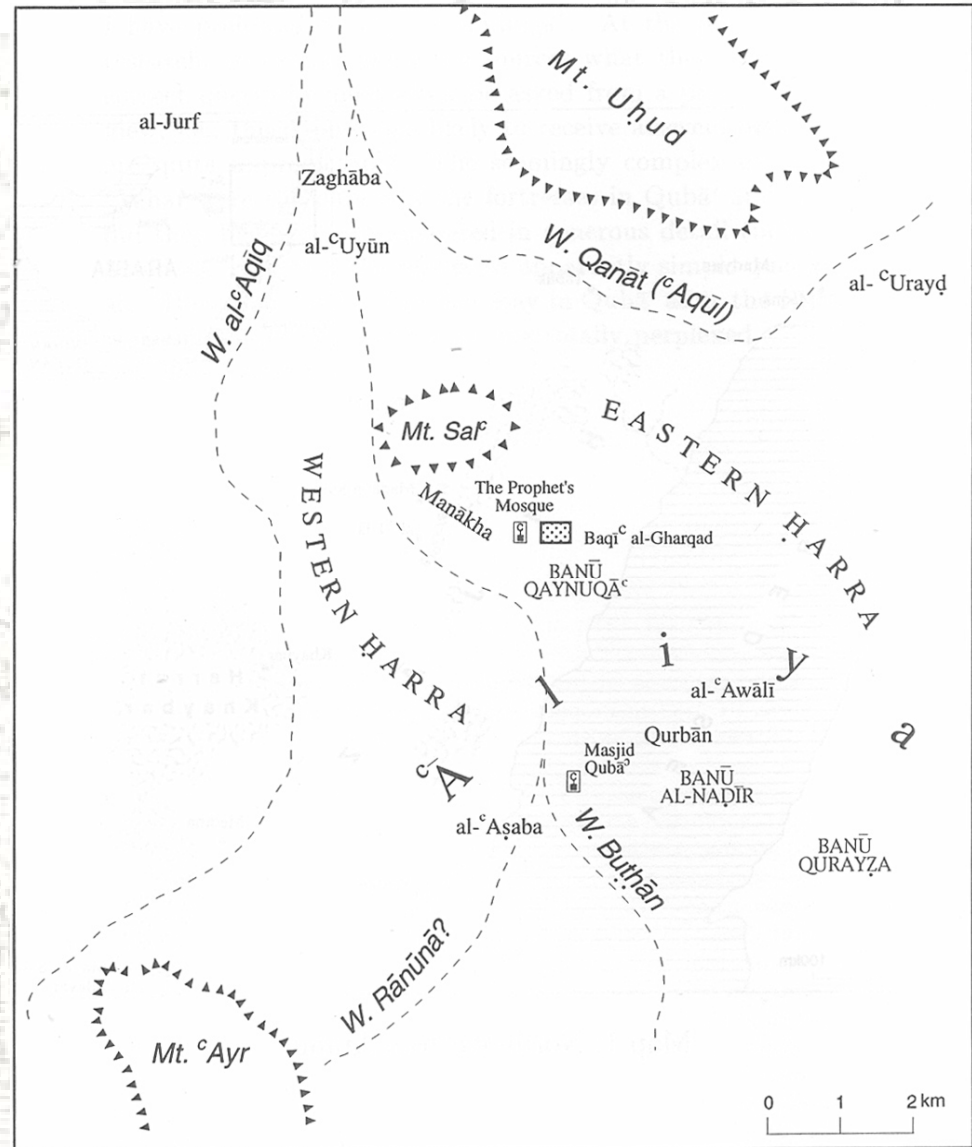
xvi

Segmentary Lineage Theory

Umm al-Jimal – Southern Jordan



Spatial organization of Pre-Islamic Madina (Yathrib)

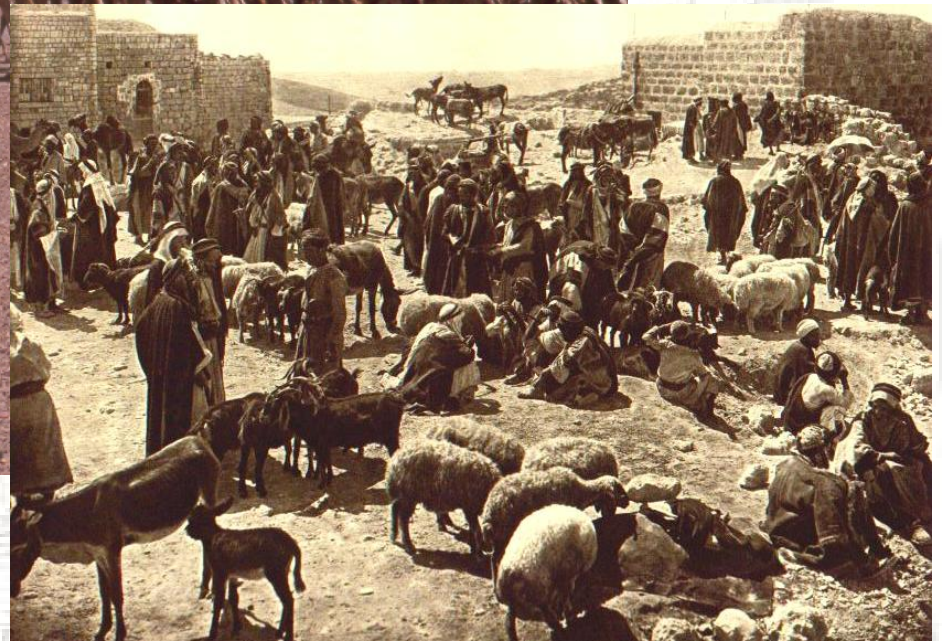


Tribe and Gender

ARABIA



Nomadic Pastoralism



Social Organization and the environment



Tribal Humanism

ARABIA

