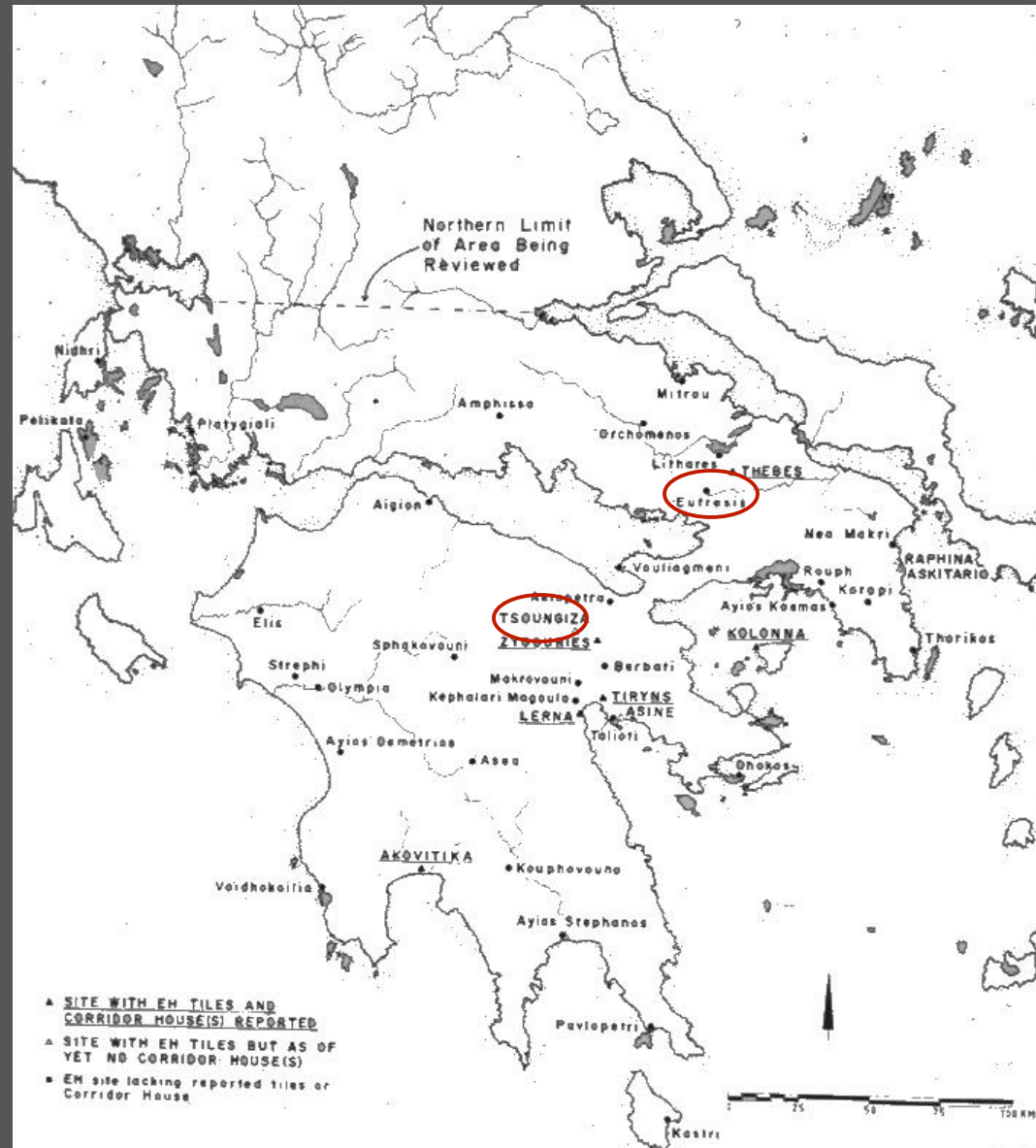


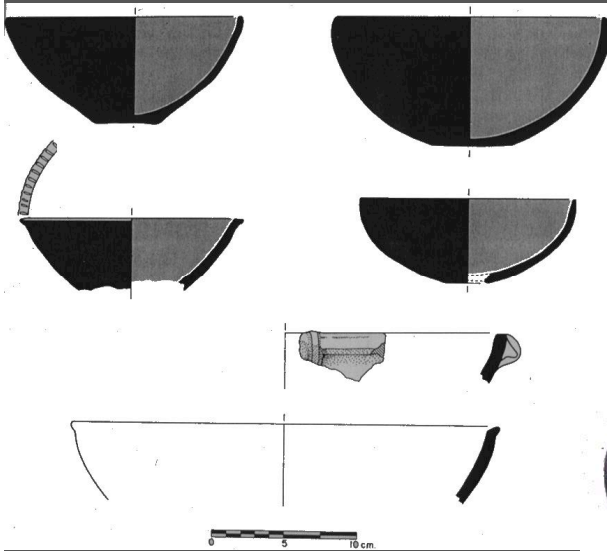
The Early Bronze Age on the Greek Mainland

(3100/3000 - 2200/2150 BCE)

Greek Mainland: Map of major Early Helladic Sites



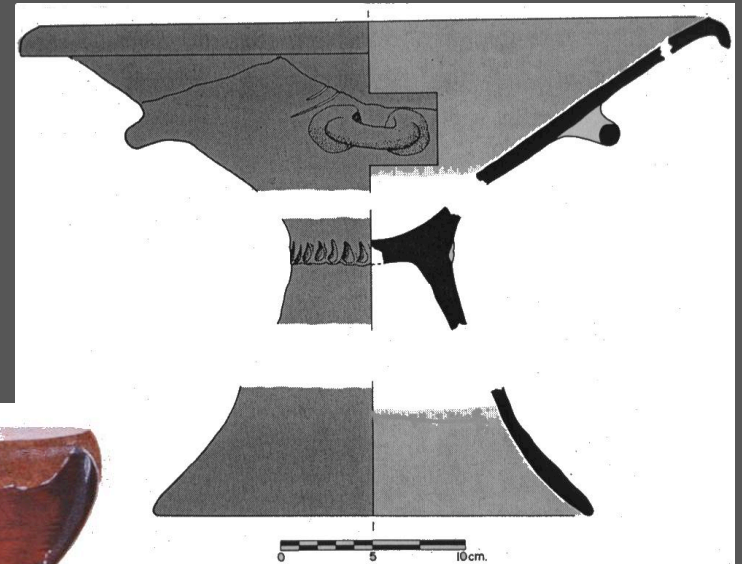
Early Helladic I Pottery (Eutresis Culture)



Hemispherical bowls
Tsoungiza.



Hemispherical and conical bowls. Eutresis.

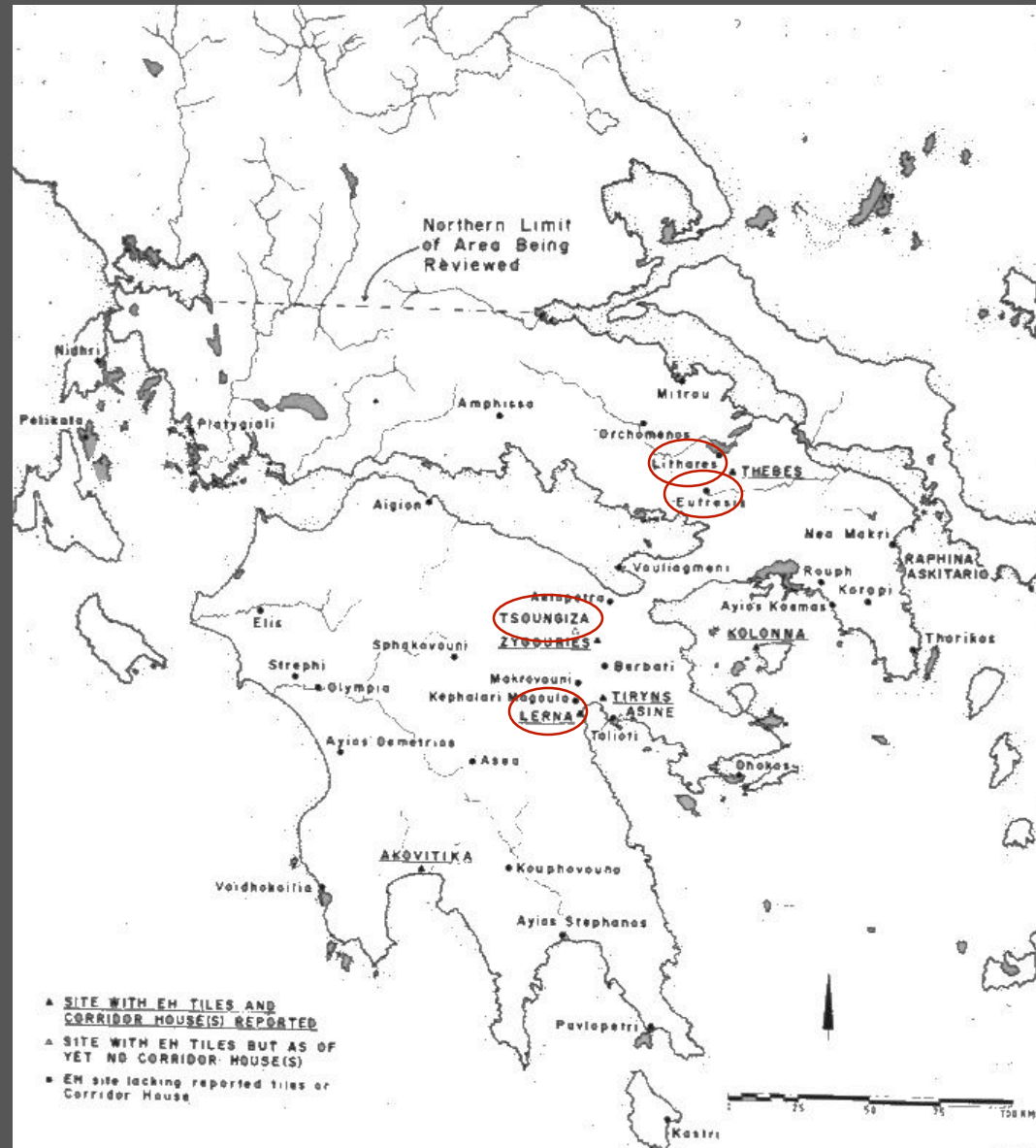


Pedestal-footed bowl.
Tsoungiza.

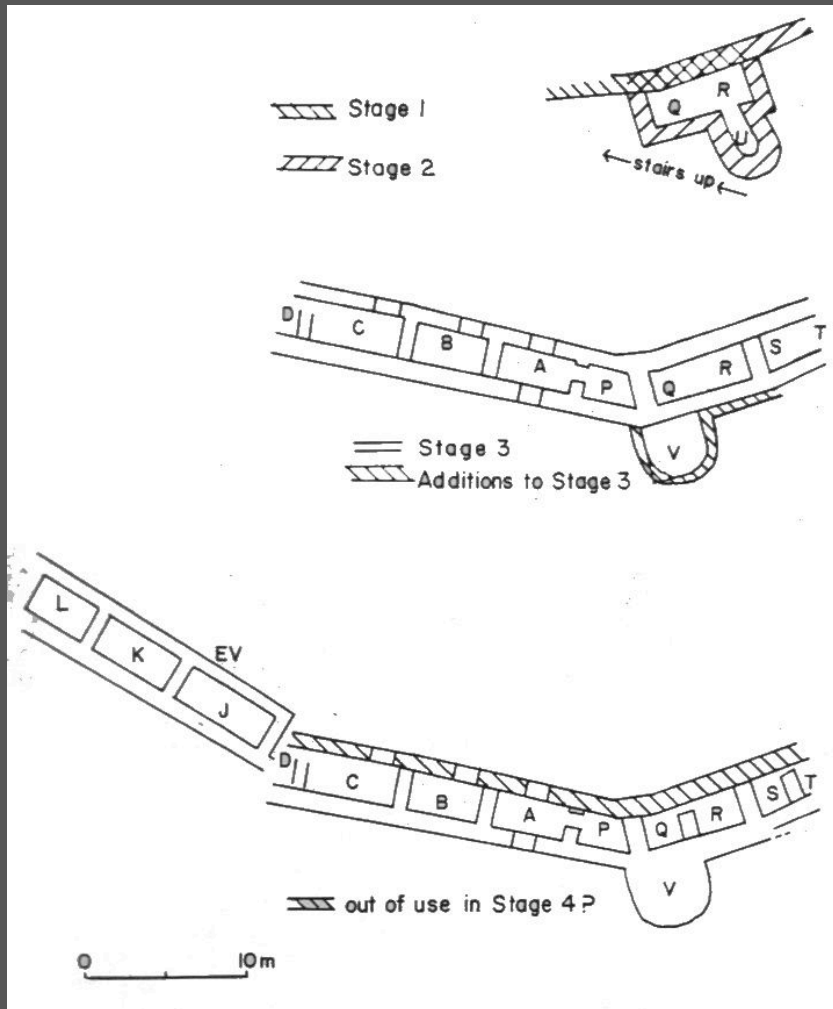
Map of some Early Helladic II Sites on Mainland Greece



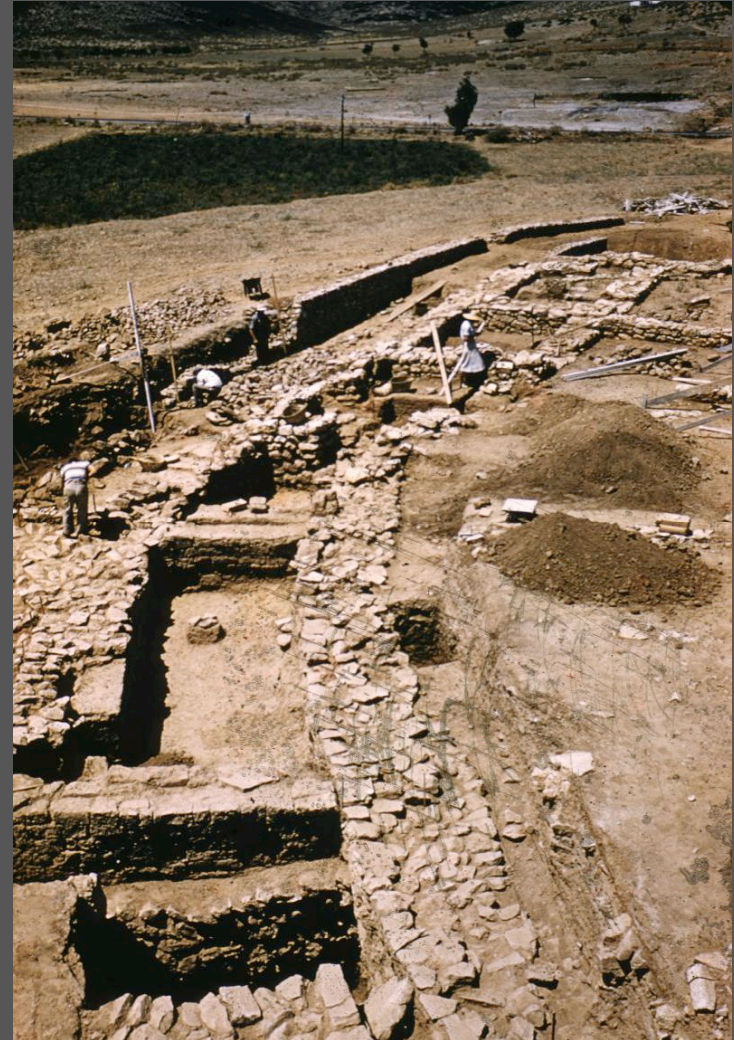
Map of the main EH IIA Sites



The fortification walls at Lerna from Early Helladic IIA



Plan of the fortifications at Lerna in 4 phases

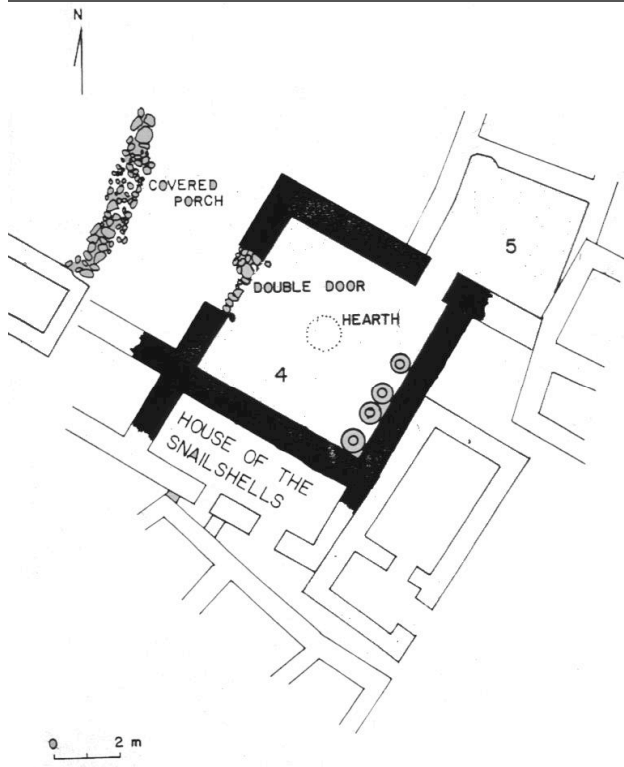


View of the fortifications at Lerna

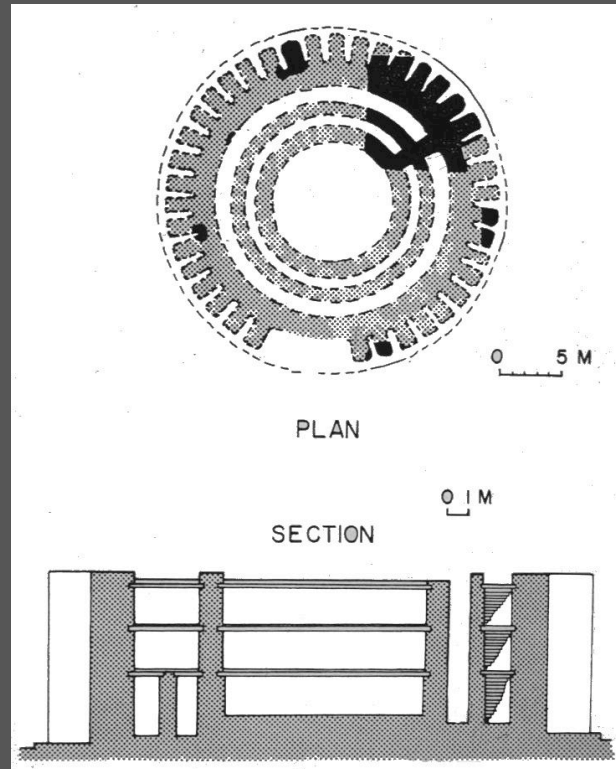
View of the site at Tsoungiza (below)
and a fuzzy reconstruction of the
EH IIA building (left)



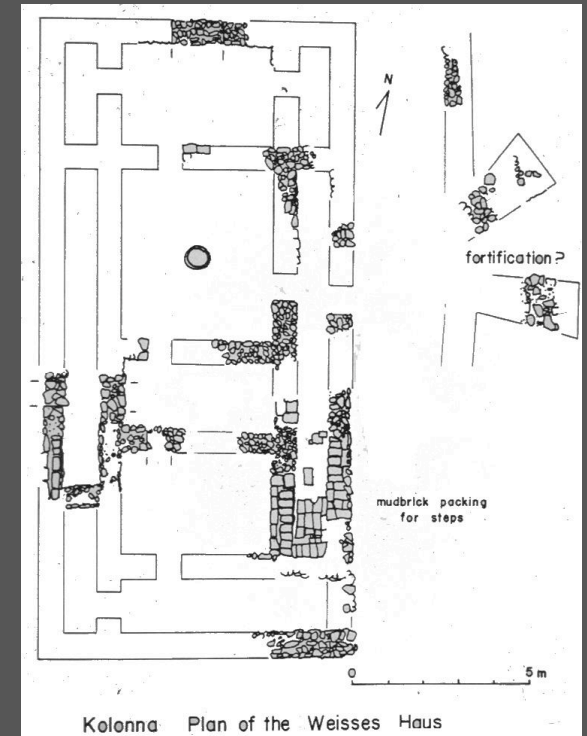
Plans of buildings from the EH II period.



Plan of the House of the Pithoi.
Zygouries

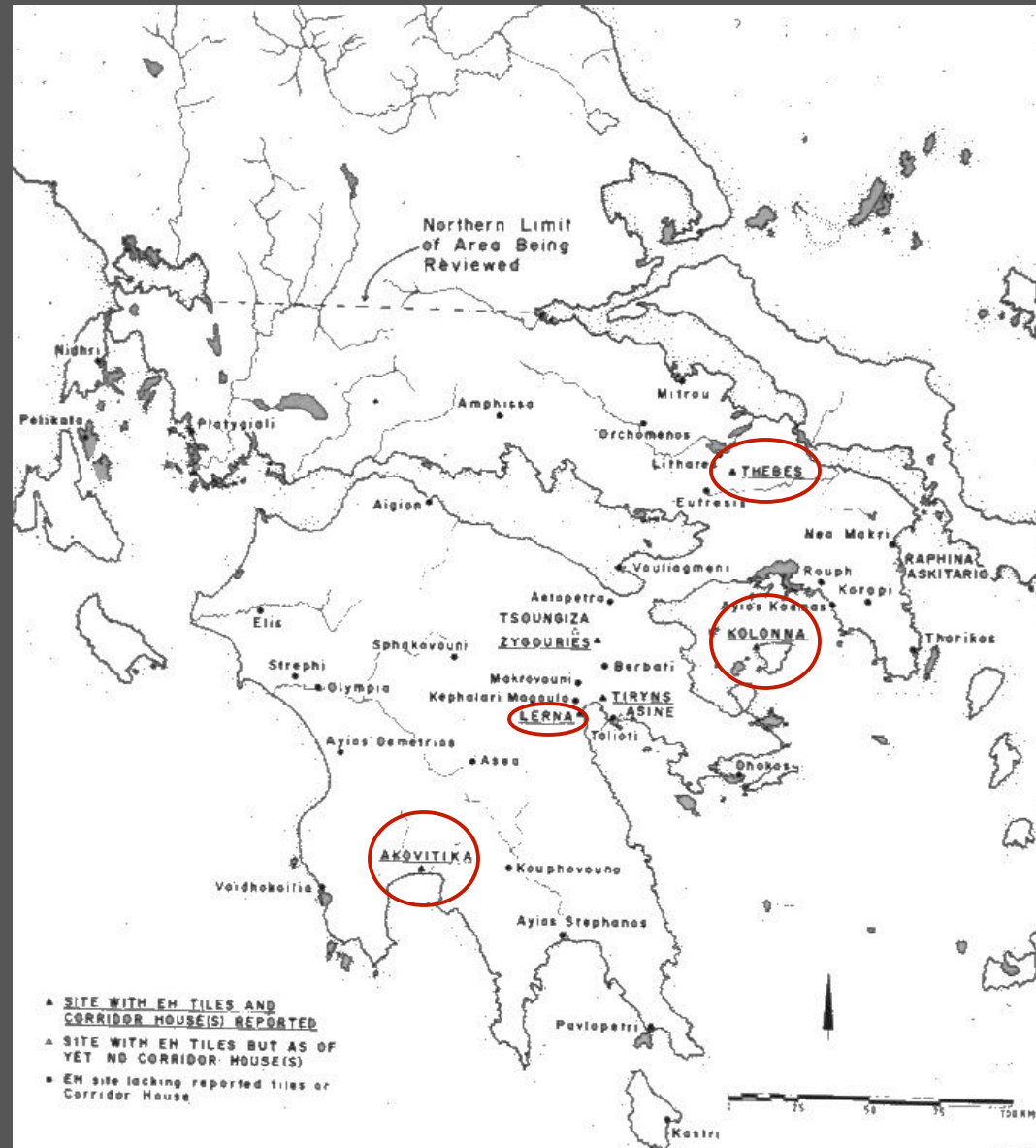


Plan and reconstructed section
of the Rundbau. Tiryns.

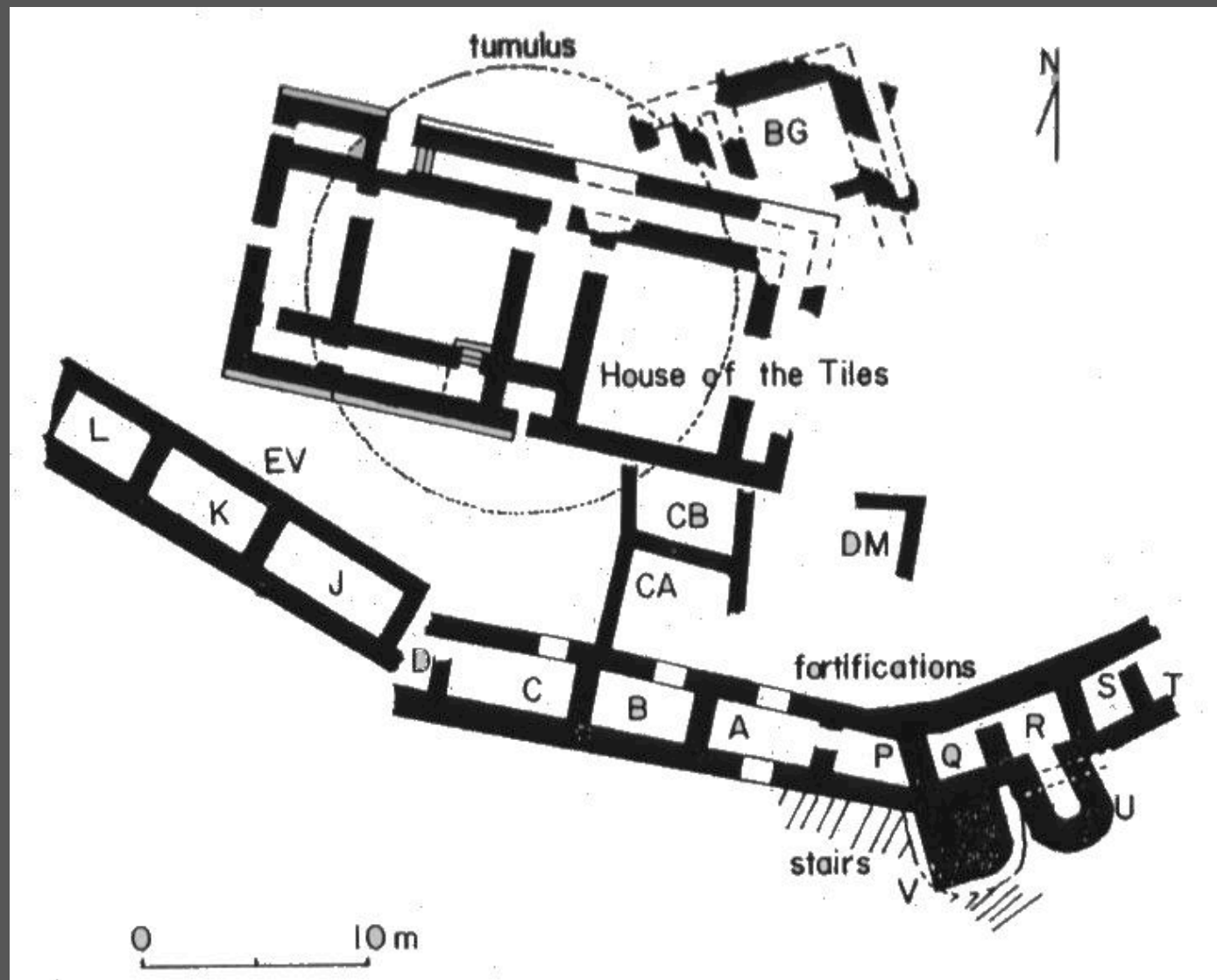


Plan of the Weisses Haus.
Kolonna.

Site from the Early Helladic IIB period



Early Helladic II at Lerna level III. All phases.





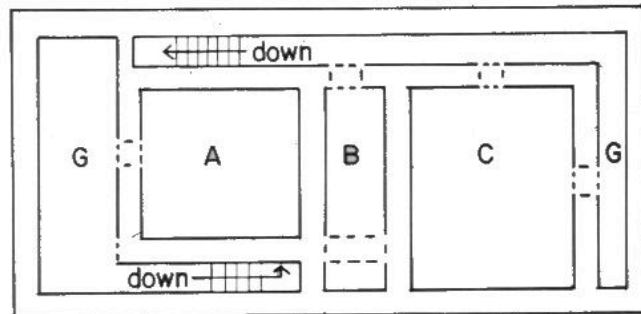
Lerna, House of the Tiles, from the West

RECONSTRUCTION 1

- A Private Room
- B Lightwell
- C Public Room
- G Galleries (open to exterior)

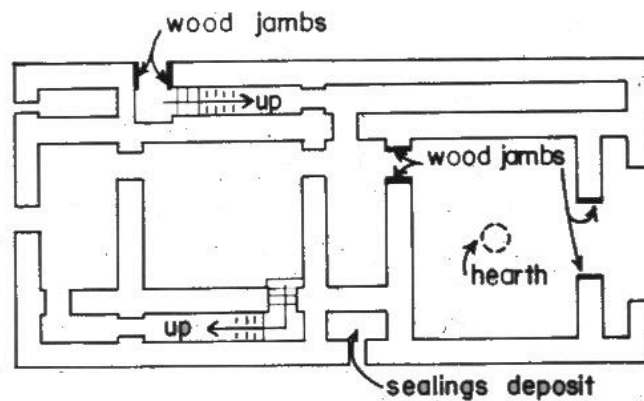
RECONSTRUCTION 2

- Private Room
- Gallery or Public Room
- Clerestory
- Galleries



SECOND FLOOR

0 5m



FIRST FLOOR

House of the Tiles
at Lerna. Plan of
both floors.

Building materials from Lerna III: House of the Tiles



Roof tile.

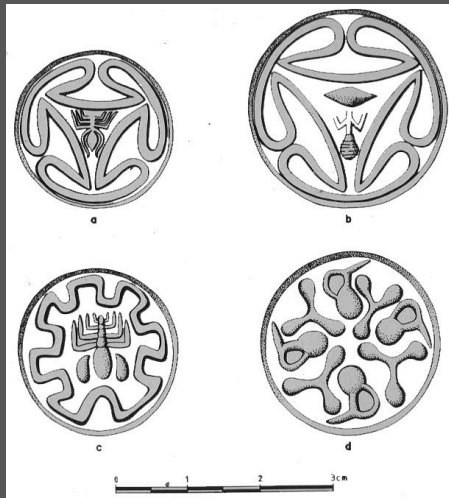


Mud brick.

Room XI of the House of the Tiles at Lerna, view from the South



Evidence for seal use and/or administration in EH II at Lerna III.



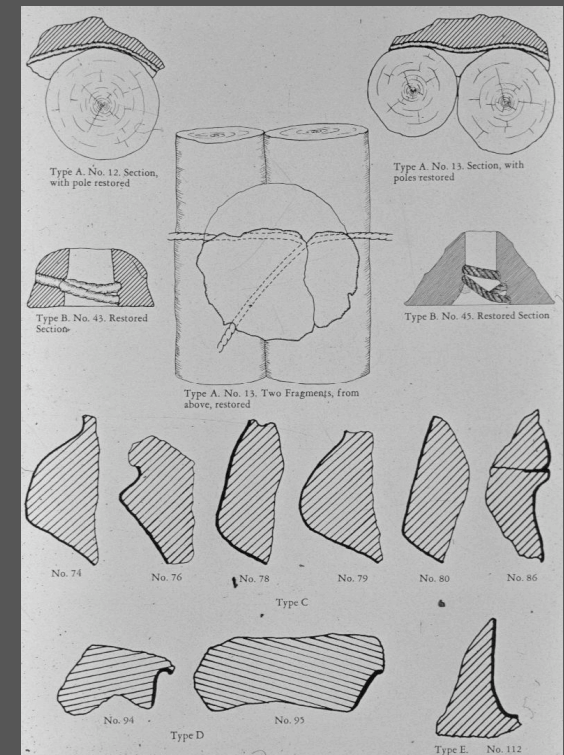
Sealings. Representational Types.



Sealing: View.



Seal-impressed pithos.



Types of Sealings.

Pottery from EH II levels Lerna.



Spoon.



Urfiris Saucer.



Cooking jar with incised graffiti.



Linear Beaked jug.

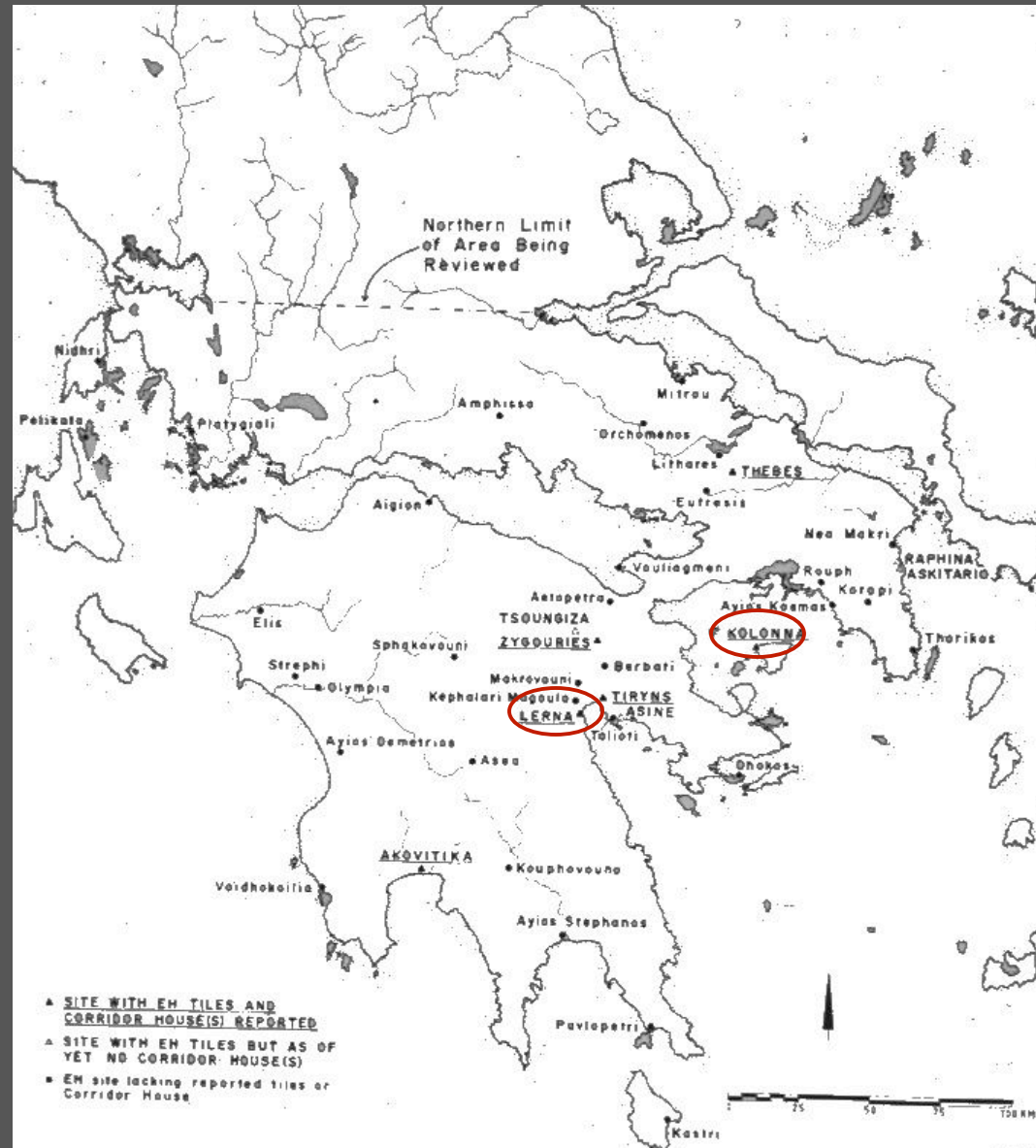


Urfiris Sauceboat.

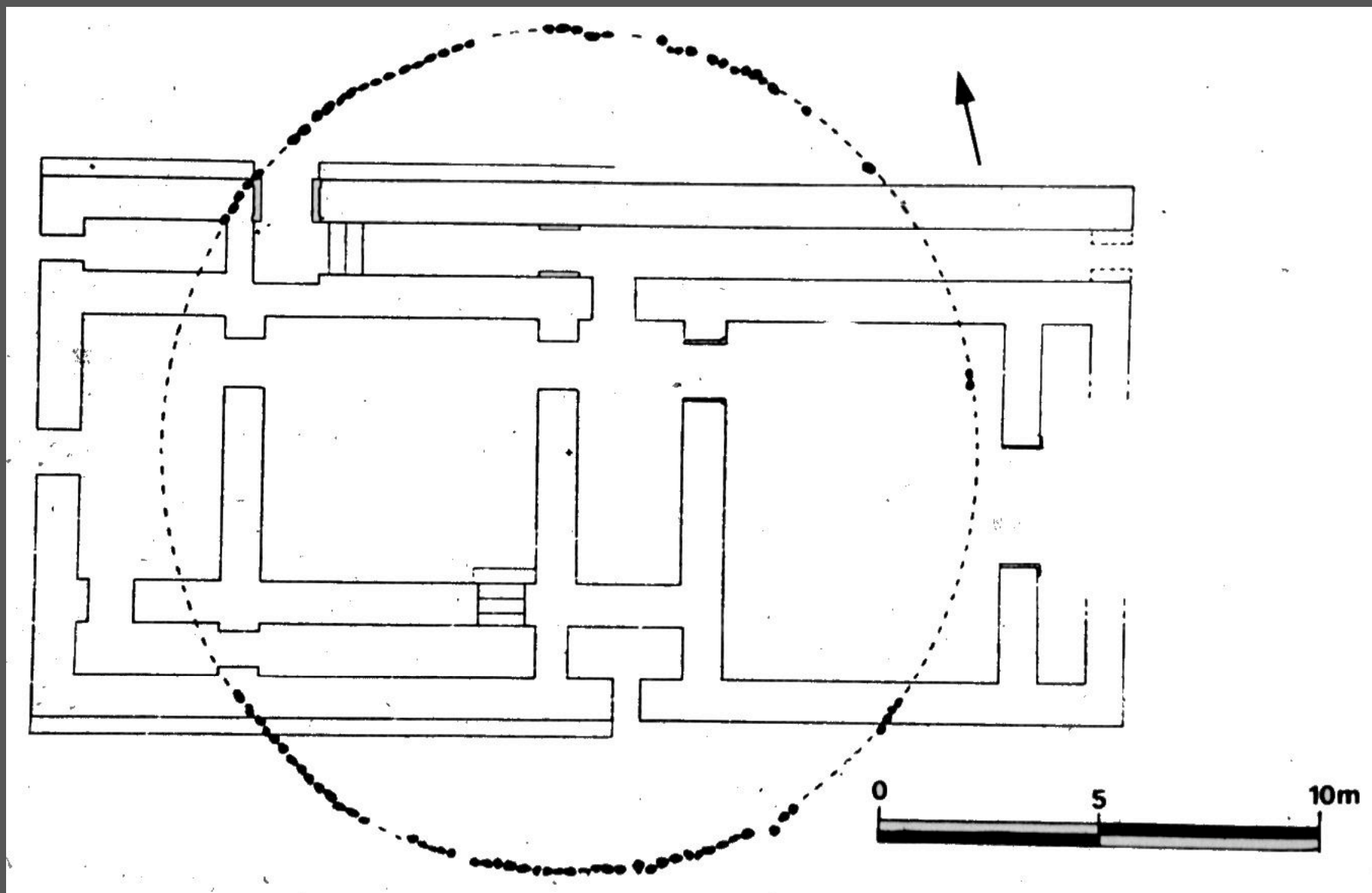


Patterned askos.

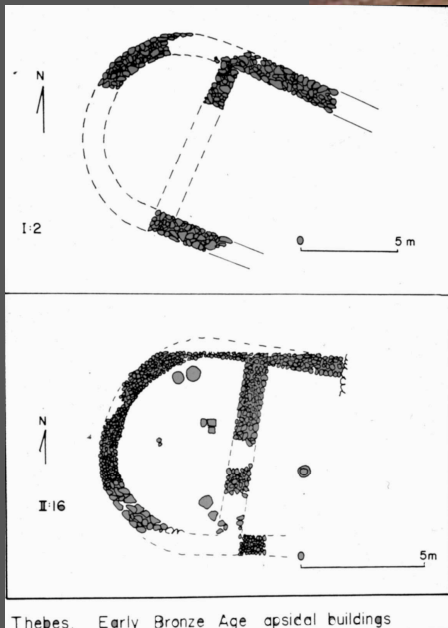
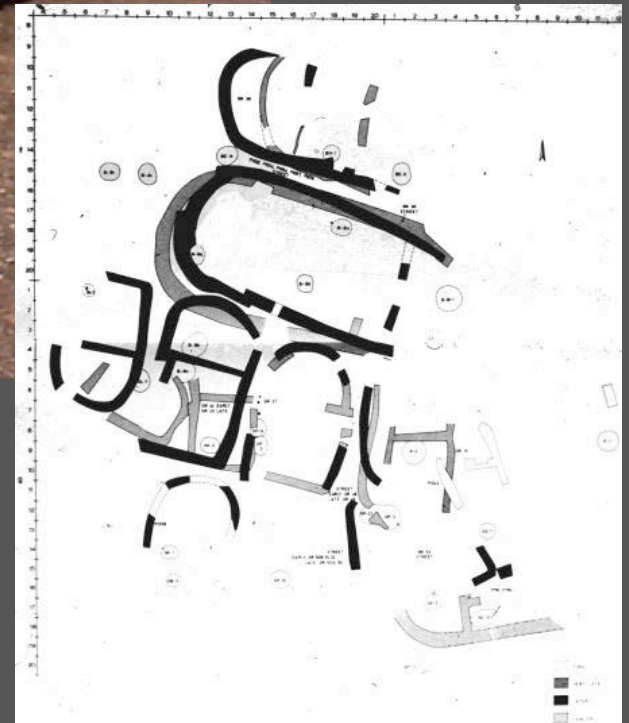
Map of Early Helladic III Sites



Early Helladic III period at Lerna:
tumulus built over the House of the Tiles



Apsidal buildings of Early Helladic III period



View of one of the apsidal buildings at Lerna (above); plan of the apsidal buildings at Lerna (right); plan of the apsidal building at Thebes (left).

View of the site of Kolonna on Aegina

