

# CLAS 0210

## Sport in the Ancient Greek World



Class 10

Wednesday 19 February,  
2010

Athletic Events I:

Running





Sprinter on a  
6th-century BC  
vase





- Stadium at Delphi

**STADION = a sprint footrace of 600 ancient feet**

**the foot varied from 0.296 to 0.32 m**

**Olympic stade = 192.27 m**

**Delphi (Pythian) stade = 177.5 m**

**Pergamon stade = 210 m**



## Length of a 24-stade length dolichos:

- at Pergamon = 5,040 m
- at Delphi = 4,260 m
- difference = almost 800 m

## The three main foot races:

**STADION** — sprint of 600 feet

**DIAULOS** — double stade race

**DOLICHOS** — middle-distance race

- at Olympia = 24 stades, ca. 5.000 m
- elsewhere, 7, 12, 20, or 24 stades

**HIPPIOS** — the “horsy race”

- not run at Olympia, but introduced at other games later; 6 stades long


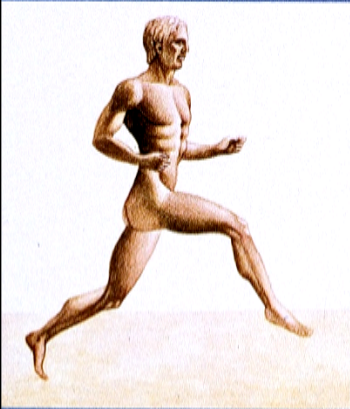





kampter



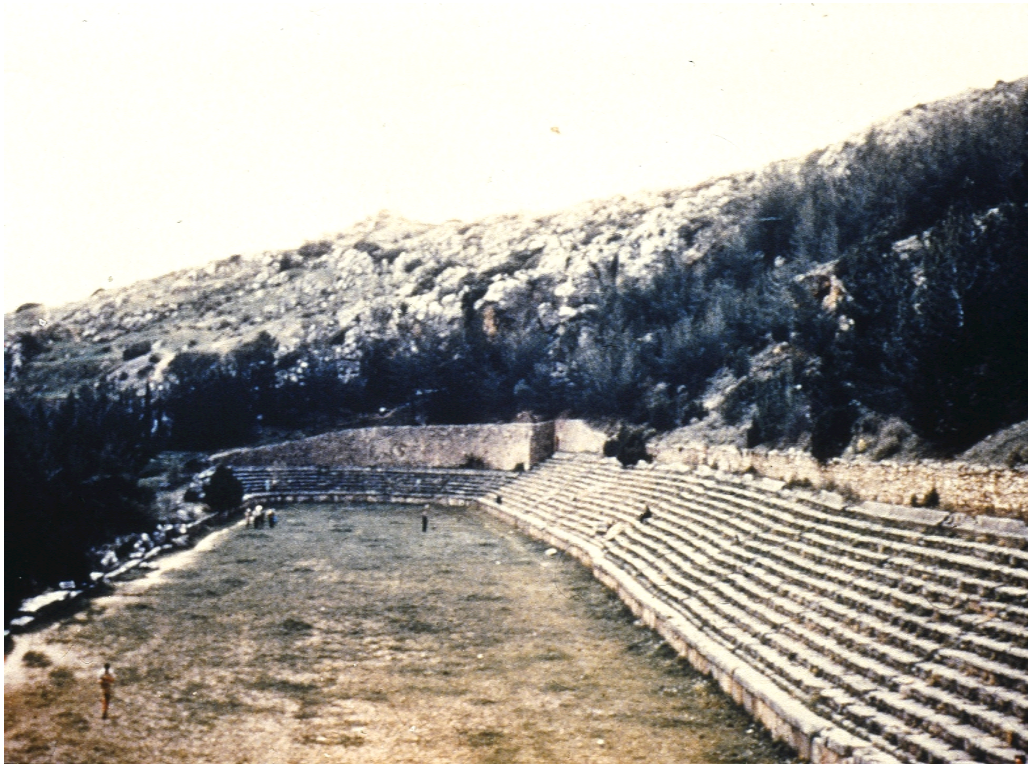


	ANCIENT NAME	DISTANCE OF ANCIENT RACE	CORRESPONDING MODERN RACE
	stadion	1 stade = 600 ancient feet = 192.27 m. (Olympia)	200 m.
	ANCIENT NAME	DISTANCE OF ANCIENT RACE	CORRESPONDING MODERN RACE
	diaulos	2 stades = 1,200 ancient feet	400 m.
	ANCIENT NAME	DISTANCE OF ANCIENT RACE	CORRESPONDING MODERN RACE
	hippios	4 stades	800 m.
	ANCIENT NAME	DISTANCE OF ANCIENT RACE	CORRESPONDING MODERN RACE
	dolichos	7 to 24 stades	2,000 m.



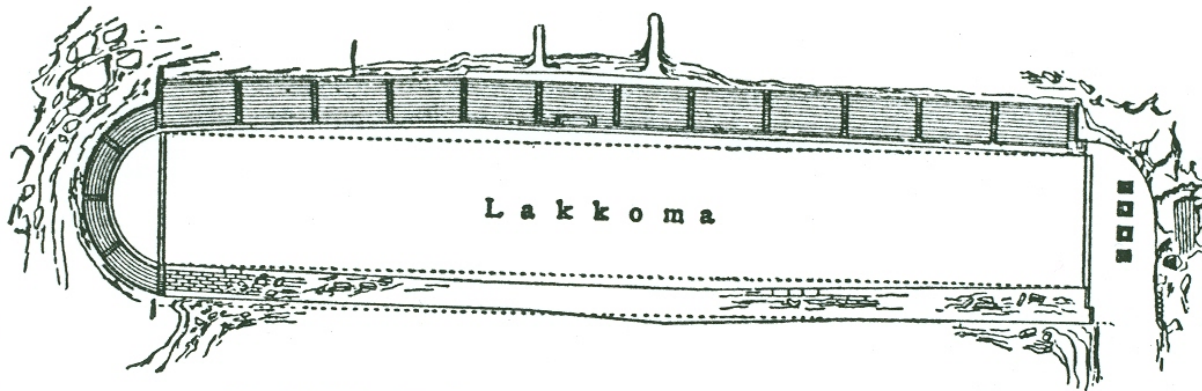
# Stadium at Delphi

---

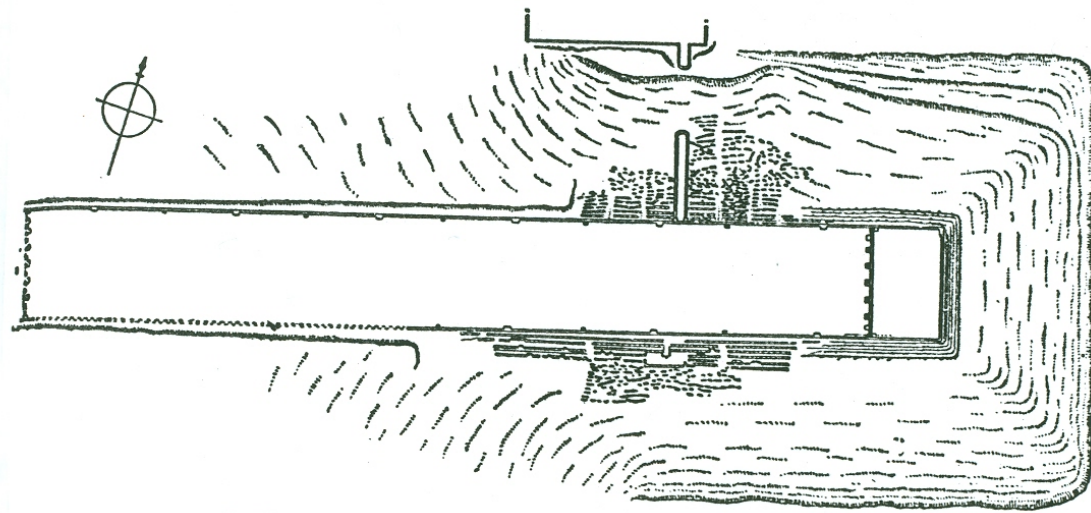




# Stadium plans



80. PLAN OF STADIUM OF DELPHI. *B.C.H.* xxiii  
(1899), pl. XIII.



81. PLAN OF STADIUM OF EPIDAURUS. *Πρακτικά*,  
1902, pl. I.

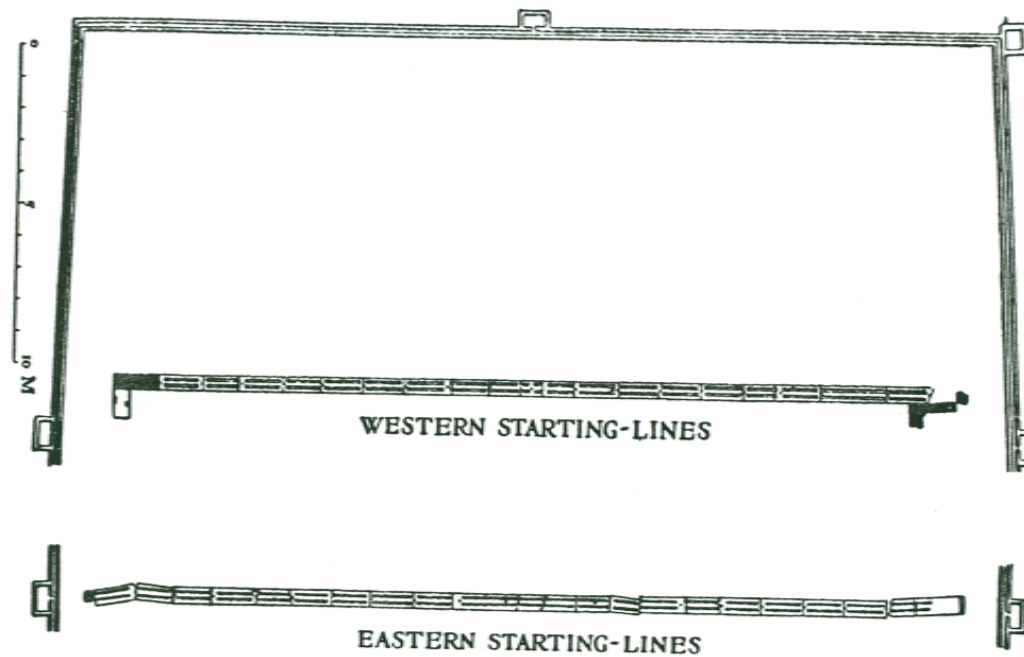




---

The girls' race at the Heraia at Olympia  
(6th-century BC black-figure vase)

## Starting lines at Olympia



*Bater* = starting line, or jumping off point

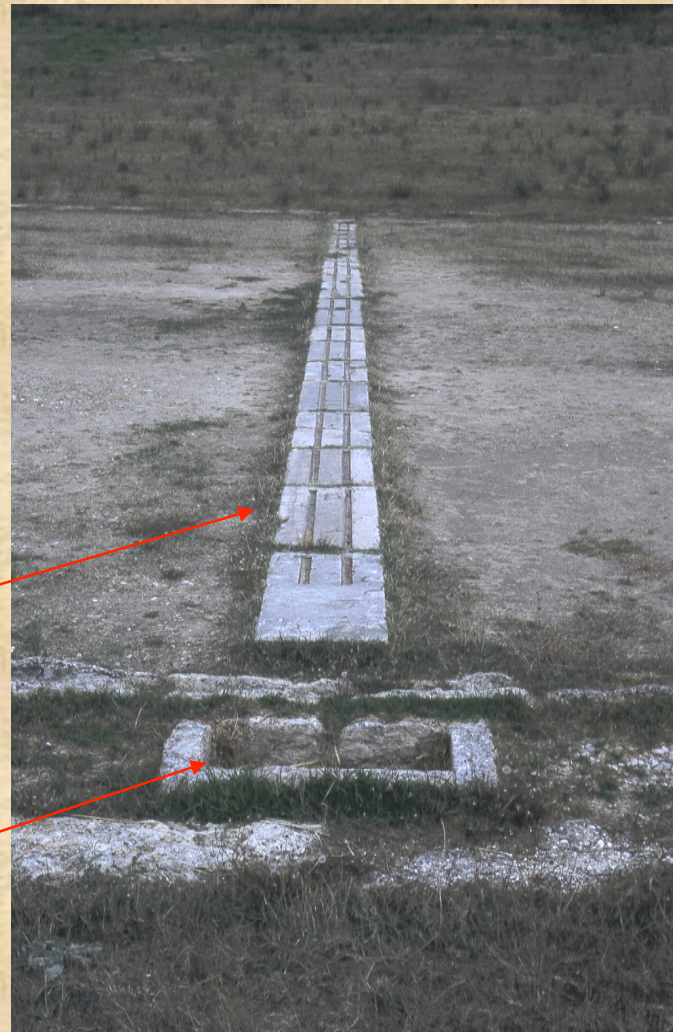


# Starting line at Olympia

---

“Bater” (jumping-off point)

Water basin





## Stadium at Olympia

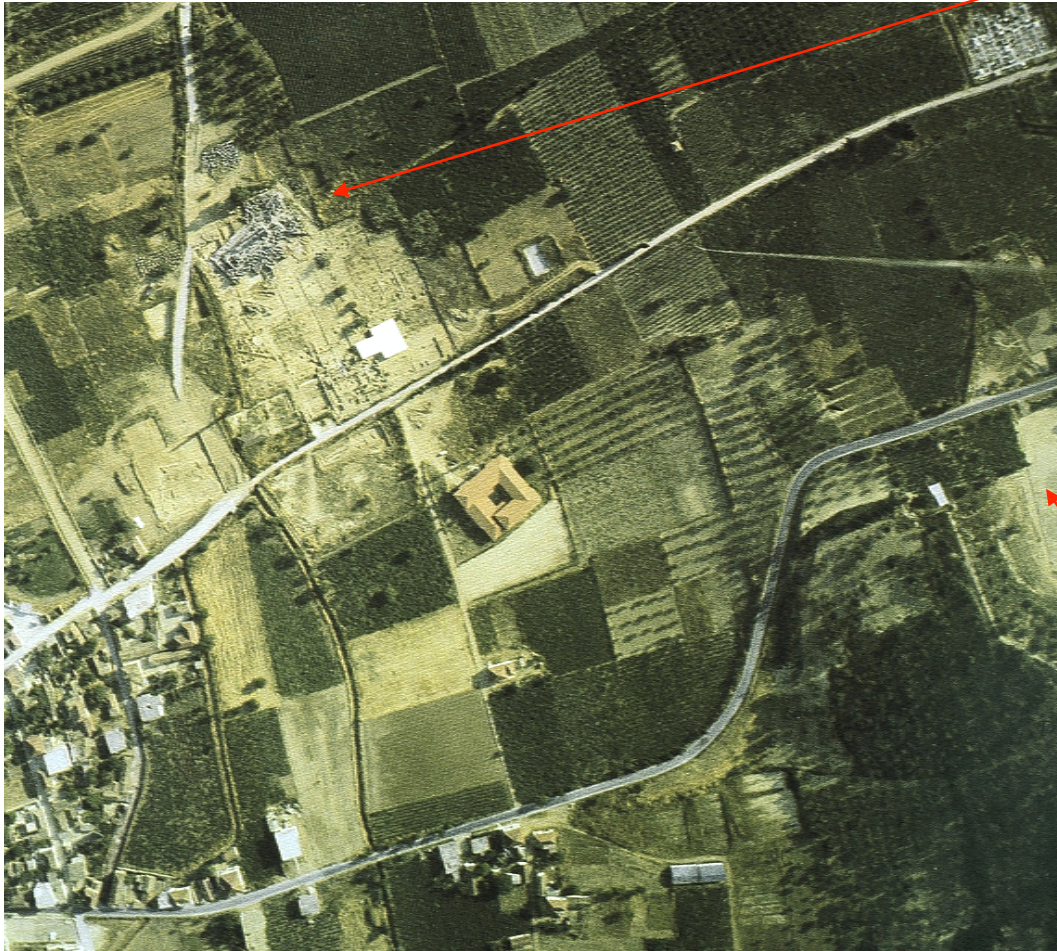
(looking down course from the finish-line end)

---





# Nemea



Temple of Zeus

stadium



# Nemea



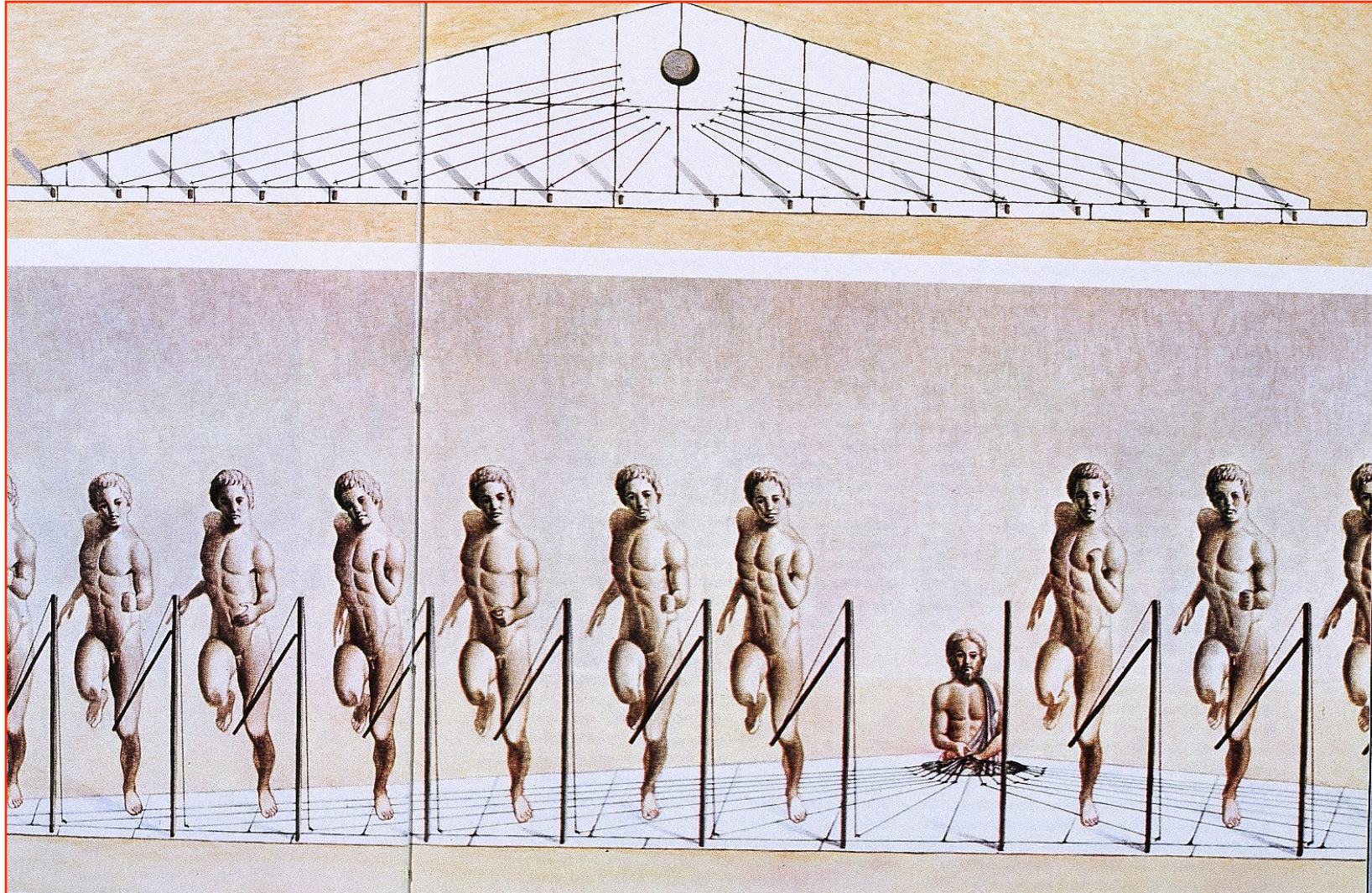
water  
channels

tunnel  
into  
stadium



# the **hysplex** (starting-gate)

See Arete #21-24







PHOTOGRAPH COURTESY OF THE UNIVERSITY OF CALIFORNIA AT BERKELEY, NEMEA EXCAVATIONS ARCHIVE

100m race,  
Athens 1896

*Girls, in traditional starting posture, prepare to run at Nemea in 1994, marking the opening of the ancient stadium as an archaeological park.*

Nemea, stade race reconstruction, 1994

