

Mounds In The Rania Plain And Excavations; At Tell Basmusian (1956)

I. Introduction:

The ancient sites in the Rania plain, or Dasht-i-Bitwain, were first investigated officially by Sd. Sabri Shukri in 1950, as part of the normal survey work of the Directorate General of Antiquities. In September, 1955, a more detailed study of the area due to be flooded by the new Dokan Dam was made by a team consisting of Sd. Muhammad Ali Mustafa, Sd. Mudhaffar Sheikh Qadir, and the present writer. Some notes on this survey have been published already¹; further details are included here.

The five mounds dug on our recommendation were Kamarian, ed-Dem, Shemshara, Qarashina, and Basmusian. Sd. Abdul Qadir Al-Tekriti has produced a report on Tell ed-Dem,² and there have been several on Shemshara,³ in addition to an account of the Uruk pottery from all five sites.⁴

(1) Dr. Naji al-Asil, *Sumer*, 12 (1956). pp. 6-7.

(2) Abdul Qadir Tikl'iti, M.A., *Sumer*, 16 (1960), pp. 93-109 (in Arabic).

(3) Harold Ingholt, *Sumer*, 13 (1957) pp. 214-215; J. Laessoe, *ibid.* pp. 216-218. -----, *Sumer*, 15 (1959), pp. 15-18. -----, *Sumer*, 16 (1960), pp. 12-19. -----, The Shemshara Tablets. A preliminary report (Arkaeologisk-Kunst historiske Meddelelser udgivet of Det Kongelige Danske Videnskabernes Selskab, Bind 4, nr. 3) Copenhagen, 1959. Peder Mortensen, *Sumer*, 18 (1962), pp. 76-80. -----, *Sumer*, 20 (1964), pp. 28-36

(4) Abu Al-Soof, *Sumer*, 20 (1964), pp. 37-42.

The present writer was responsible for the first of the three seasons of excavation at Basmusian, and this is now described briefly below. In the years that have elapsed since our work in the Rania plain, some essential plans and records have been mislaid to continue the search for them might delay publication indefinitely. This article has been written, with regret and many reservations, in the belief that scholarship is better served by limited information than by none at all.

II. Mounds in the Rania Plain (pls. I and V-VI):

The original descriptions of these sites are provided. The dating was based on collections of surface sherds, and it is clear, in the light of further experience, that more precise criteria would have added to the value of the survey. It may be noted that, among the terms used, Akkadian, Hurrian, and Median are likely to indicate a fairly wide range of, respectively late third millennium, early or middle second millennium, and post-Assyrian material.

1. *Kirdi Bur*: Two mounds, 400 m. apart, on either side of a seasonal stream, the northern is roughly circular, some 500 m. in circumference and 3 m. high, and the southern, which lies on a natural hillock, is some 100 m. across and 4 m. high. Pre-Uruk (?), Uruk, Hurrian, late Assyrian.
2. *Mullah Umar*: Large circular mound on the western bank of the Zab; some 200 m. in circumference, and 15 m. across

- at its top, where stone and juss foundations are visible. Hurrian, Late Assyrian, Median, Parthian.
3. *Kamarian*: Conical mound, some 70 m. in diameter and 12 m. high. Pre-Halaf (?), Ubaid, Uruk, Akkadian, Hurrian, Middle Assyrian, Median.
 4. *Butan*: Large elongated mound, beside the eastern bank of the Zab; some 150 m. long, 70 m. wide, and 6-7 m. high. Pre-Halaf, Halaf, painted Hurrian, Assyrian, Median.
 5. *Ed-Dem*: Hemispherical mound, some 70 m. in diameter and 12 m. high. Many large pebbles on the surface. Ubaid, Uruk, Akkadian, Assyrian, Hurrian, Median.
 6. *Kullah*: Ovoid mound on eastern terrace of Zab; some 100 m. long at its base, 70 m. across on its top and 20 m. high. Assyrian, Hurrian, Median, Parthian and early Islamic.
 7. *Tankija*: Mound on hill; some 150 m. long, 100 m. wide, 3 m. high. Prehistoric, Assyrian, Median.
 8. *Kullah Kawi*: Elongated (west-east) mound in the Si-Najian valley; some 200 m. long, 70 m. wide and 7 m. high. Ubaid, Uruk, Assyrian, Hurrian, Median.
 9. *Qara Qaj*: Large low mound south of Kullah Kawi; some 250 m. long and 100 m. wide. Late Assyrian, Median, local wares.
 10. *Mullah Shell*: Two mounds on a high cliff, overlooking Zab on its eastern bank; the northern mound is some 150 m. across and the southern 200 m. Prehistoric, Assyrian, Median.
 11. *Haiz*: Large mound, some 150 m. at its base and 15 m. high. Prehistoric, Hurrian, Assyrian, Median.
 12. *Babu Gawran* (i.e. father and son): Two mounds 300 m. apart the larger is some 200 m. at its base and 8 m. high. Both are Prehistoric, Assyrian, Median.
 13. *Mamand*: Large mound some 150 m. across at base and 5 m. high. Prehistoric, Assyrian, Median.
 14. *Tepe Gawran*: Two mounds, the lower is some 150 m. long and 50 m. wide, the other is 250 m. long and 3 m. high. The former shows traces on its summit of an Assyrian building with baked bricks. Both are Late Assyrian, Median, Sassanian, and Islamic.
 15. *Shemshara*: - Conical mound, some 50 m. across at its base, 20 m. across on top, and nearly 25 m. high (50 m. above the Zab). Prehistoric, Assyrian, Median, Islamic.
 16. *Kullak*: Hemispherical mound, 100 m. across at its base and 8 m. high. Prehistoric, Assyrian, Median, Islamic.
 17. *Parah Post*: Two small mounds, altogether 200 m. long, 70 m. wide, and 2-3 m. high. Prehistoric, Late Assyrian, Sassanian, Median.
 18. *Basmusian*: See below; the surface sherds were described as prehistoric, Assyrian, Hurrian, Median, Sassanian, and Islamic.
 19. *Qarashina*: Some 70 m. across at its base and 20 m. high. Prehistoric (especially Uruk), Assyrian, Median.
 - 20-27. No details available.
 28. *Serkhomah*: Large mound in

- Baslan valley, some 200 m. across at its base, 100 m. across on top, and 20 m. high. Prehistoric Assyrian.
29. *Buskain*: Large mound, some 200 m. at its base and 15 m. high. Prehistoric, Halaf, Ubaid, Uruk, Assyrian, Median.
30. *Kullan*: Large mound some 150 m. long, 100 m. wide, and 10 m. high. Samarra, Halaf, Ubaid, Late Assyrian, Median.
31. *Kamam*: Large hemispherical mound on hill; some 250 m. long at its base, and 15 m. high. Prehistoric, Assyrian, Median, Sassanian, early Islamic.
32. *Kundu*: Hemispherical mound some 300 m. in circumference and 12 m. high. Hassuna, Samarra, Ubaid, Assyrian, Hurrian, Median.
33. *Qurralla* (north): Ovoid mound some 200 m. long, 50 m. wide, and 10 m. high. Ubaid, Uruk, Assyrian, Median.
34. *Qurralla* (south): Large ovoid mound, some 250 m. long, 100 m. wide, and 20 m. high. Ubaid, Uruk, Late Assyrian, Median.
35. *Mahmud Habbas*: Large mound some 200 m. long and 10 m. high. Late Assyrian, Median, early Islamic.
36. *Ghaznah*: Large mound, some 200 m. long and 21 m. high. Assyrian, Median, early Islamic.
37. *Araban*: Some 250 m. long and 20 m. high. Assyrian, Median, Islamic.
38. *Qara Tepe Kun* (in *Qaratepe village*): Some 300 m. long and 15 m. high. Prehistoric, Middle and Late Assyrian, Sassanian, early Islamic.
39. *Kirdel*: Some 200 m. long and 10

m. high Ubaid, Uruk, Assyrian, Median.

40. *Qabr es-Sahabah*: Mound near Merzah Rustam. Prehistoric, Assyrian, Median.

III. Basmusian:

Tell Basmusian, the largest site in the Rania plain, lies about 12 km. south of Rania. It covers an area some 1500 m. in circumference, and is 23 m. high; there is a projection on its north-western side (Pl. II). The river Zab is 800 m. due east.

A village, half a century old, and consisting of some forty houses, occupied part of the south-eastern flank of the mound (Pl. IV, 1). It may be of interest to note that the houses, all of which had stone footings to their walls, were usually built of *tof*, with mud-brick and *juss* plaster in the finest dwellings. They were roofed with earth, which rested on beams and small branches of wood. Some were two-storeyed with livestock sometimes on the lower floor, though most animals were normally kept in the courtyards. The main crops, irrigated from perennial stream were cotton and tobacco; some wheat, barley, rice, and summer vegetables were grown for local consumption. Fish from the Zab was another staple food.

The first season of excavation lasted from 10th. July to 15th October, 1956. It was directed by the present writer, with Sd. Borhan Chelmiran as field assistant and registrar; Sd. Sha'lan Hussein acted as camp-manager and Sd. Hassan Azam as accountant. Sd. Muhammad Hamidha helped with the surveying and Sd. Isa Toma was foreman. I am greatly indebted to all my colleagues for their assistance and

ingenuity.

The Excavations:

Two trenches 20 m. wide were originally opened: (A) stretched 40 m. eastwards from the summit of the mound on its northern side, and (B) 25 m. westwards. The area between the trenches proved to contain a temple, and work was eventually concentrated here, with slight extensions to north and south. There were five levels (I-V Starting from the top), only strips 5 m. wide were excavated below level II in trenches (A) and (B). The stratigraphy was almost everywhere disturbed by pits.

Level I was represented by scattered fragments of pebble foundations from which no meaningful plan could be recovered. Those in trench (A) were mainly found at its western and eastern ends; there was a Clear floor, and many ovens, on the east. The sherds belonged to the eighth and ninth centuries A.D.; some sizable constructions of baked brick, possibly arched tombs of Ilkhanid date, were also found in both trenches (PL. VIII, 2), and it is possible that the site was occupied throughout the Abbasid period. If so, the floors had been eroded away in the area in which we dug, but there are still traces of brick and *juss* structures elsewhere on the mound, resembling the buttressed terracing visible on the flanks of Qal'at Erbil.

There had been a break in occupation between levels I and II, but the remains of the latter were somewhat similar. We found more pebble foundations, mostly at the eastern end of trench (A) and the western end of trench (B); there were traces of brick pavements at the western end of trench (A). Again no meaningful ground-plan

could be recovered. The foundations of level II had sometimes cut into level III, and Islamic sherds were mixed with a high proportion of much earlier material.

Level III contained, apart from the temple described below, no building remains at all. The sherds suggested a date towards the middle or end of the second millennium B.C., and this level (or possibly level II) may be the source of some fragments of Middle Assyrian tablets⁵ which were found in a pit cut into level IV just south of the temple.

Level IV incorporated two phases of an earlier version of the temple. Outside it, in trench (B), there were fragments of thin mud-brick walls, but the occupation fill had been severely pitted. The pottery belonged predominantly in the first half of the second millennium, and included Khabur ware.

Level V, which had been partially cut away by the builders of level IV, produced solid and respectable mud-brick walls, coated with layers of white and grey-green plaster and up to 40 cm. high, in both trenches (A) and (B). The building or buildings of which we found these traces may have been constructed towards the beginning of the second millennium.

Our evidence for the dating of levels I-V may be traced through the list of illustrations.

We may add that Sd. Abdul Qadir al-Tekriti identified eleven more major levels, VI-XVI, in the second and third seasons, showing that the site had been occupied throughout most of the third millennium, and in the Uruk, and Halaf/Samarra periods.

The Temples:

(5) J. Laessoe, *Sumer* 15 (1959), pp. 15-18.

Both Temple I (level III) and Temple 2 (level IV) were free-standing structures on the summit of the mound, and both consisted of a single rectangular room with corners oriented towards the cardinal points (Pls. IX-XI). Temple I was a rebuilding, with the walls shifted slightly eastward, of Temple 2. It has been necessary to reconstruct the ground plan of Temple 2 (Pl. III) from photographs and measurements, all of which are included among the illustrations and in the text.

Temple I (level III) had been built of mud-bricks, some 44 by 40 by 10 cm. in size, on a foundation of stones and large pebbles (Pl. X, 4). The walls, which had been severely damaged by pits, were 3 m. wide and plastered white inside and out. A surviving recess, 2.6 m. wide, near the western corner of the south-western wall, suggested that the entire facade had been decorated in this fashion; certainly the doorway, which was 1.6 m. wide, had elaborate and well-plastered sets of six pairs of reveals on either side (Pl. XI, I). A possible later addition was a mud-brick platform or buttress, 8.5 m. wide and projecting 6.8 m., which abutted against the north-western wall.

The temple was entered through its north-eastern wall, near the northern corner; there were traces of burning inside the door. Beside it, to the right, was a baked-brick structure extending below the floor; despite its superficial resemblance to a door-socket casing, this was presumably a well for ritual use. It was cleared to a depth of 1.5 m.; it had an internal-diameter of 90 cm and was made out of bricks, curved on the inside, which measured 30 by 25 by 6 cm. (Pl. X, 3). The room was surrounded, except perhaps on the damaged south-western

side, by a bench 40 cm. wide and 25 cm. high. A dais or offering table, 2.3 m. long and 1.1 m. wide, stood almost in the centre of the room. In the north-western wall was a niche, 2 m. wide and with its base 30 cm. above the floor; it was framed by reveals, each face of which was 20 cm. wide. Whether this niche was the focal point of the room, or whether there was another at the opposite end (as in level IV) remains uncertain.

The foundation of Temple 2 (level IV), which had been cut into level V, consisted of a stepped mud-brick platform (Pl. X, 4). This was between six and twelve courses high (10-12 cm. for each course). The walls, which had been badly cut by the builders of temple 1, were in parts 3 m. wide on the south-west, 3.25 m. on the north-east, and 3.5 m. on the south-east. On the south-western facade, near its western end, was a niche containing three half-columns framed by three reveals on each side (Pl. XI, 2). Other traces of niches were observed at the southern corner (Pl. VIII, I), and it is likely that this type of decoration was carried right round the exterior as has been suggested on the restored plan. All details of the doorway had been destroyed; it must have stood in the same position as that of Temple I, and can have been no less elaborate (Pl. X, I).

The interior was quite well-preserved. The internal dimensions of the room were 10 m. by 6.5 m., and there was a niche, slightly larger than that of Temple I, in the middle of the south-eastern wall (Pl. IX, 1-2). In front of the niche there was a dais, some 20 cm. high and projecting 2 m. from the wall; this had apparently stretched the full width of the room, though it was broken on the south. Round the

remaining walls was a bench 40 cm. wide, preserved to a height of 13 cm., 17 cm. and 22 cm. on the north-western, north-eastern, and south-eastern walls respectively. A plastered table, 33 cm. high and 1.75 m. square, occupied the middle of the room. Each of the two long walls was handsomely decorated with three sets of three recessed half-columns at regular intervals (Pl. X, 1-2); there could have been another, lost set, on the south-western wall opposite the door. The short north-western wall had two groups of two columns each. All these half-columns were normally some 40 cm. wide and 14 cm. deep. There were again traces of burning near the door.

It would seem that, despite the

height of the foundations of Temple 2 and their weathered appearance, the ground-level outside the temple came to be higher than that within, with a distinct slope towards the door. The temple probably remained in use for a long time, and at least one additional phase was confirmed by a sounding beneath the floor of Temple 2. This revealed, 40 cm. down, a lower set of walls with identical fittings and decoration.

The application of half-columns to a simple bent-axis temple represents an unusual conjunction of southern and northern features, and suggests some degree of real sophistication in what was probably quite a small community in this remote district of Iraq at the beginning of the Old Babylonian period.

IV, Notes on the illustrations:⁶

Pl. I:

Mounds in the Rania Plain.

Pl. II:

Contour Map of Tell Basmusian.

Pl. III:

Temple 2 (level IV); approximate ground plan; partially restored.

Pl. IV:

1. Basmusian.
2. Qarrashina.
3. Haiz.

Pl. V:

1. Qurralla (north)
2. Kallah.
3. Blail (Blair)
4. Kamam.

Pl. VI:

1. Kullan.
2. Ali Yawah.

Pl. VII:

1. View from the east showing part of trench B; beyond is the road to Rania with Tell Kamam on the horizon.
2. View from the west showing part of trench A.
3. View from the west showing part of trench B.
4. View from the north showing part of trench A.

Pl. VIII:

1. View from the west showing part of the temple area with trench A, in the background. Darband-i-Ramkan (Sungasur gorge) appears on the horizon.
2. View from the west showing part of trench B with the ilkhanid brick tomb in the foreground.

Pl. IX:

1. View from the south-east showing Temples I and 2. The figure is standing on the floor of Temple 2, behind his head is the altar niche of Temple I.

(6) The writer is much indebted to his colleague Dr. Tariq Madhloom, Director of Assyrian research, who has drawn, in 1956, most of the finds, pottery and pot sherds illustrated in this article.

2. Altar of Temple 2 with the offering table in front. Note the half columns.

Pl. X:

1. View from the south with figure standing in the temple entrance. Note the half columns in the south-eastern wall and the bench in front.
2. Internal south-western wall in Temple 2.
3. Northern corner in Temple 2.
4. View from the north showing the Temple doorway. The stone foundation belongs to Temple I and the stepped foundation to Temple 2.

Pl. XI:

1. Entrance to Temple 1.
2. Outer south-western wall of Temples I and 2 showing the remains of decoration.

Pl. XII: (1 and 2, 1M. 60294)

Frontal and side views of a clay model, perhaps an incense burner, showing a two-storeyed tower on an ibex or similar animal. Found in fragments, in Temple I, on floor (level III). Height: 50 cm. length of base 22 cm.

Pl. XIII:

1. Two clay models from Shemshara illustrated here for comparative purposes (excavations of the second season 1958):
 - a. 1M. 62079 (to the left): height: 75 cm., length of base 21 cm.,
 - b. 1M. 62083 (to the right): height: 70 cm., base: 20x27 cm.Both were found in the courtyard of the Temple of level V.
 - a. 1M. 60273 (to the left)
Remains of a clay model, found in fragments, in Temple 1, on floor (level III).
Height: 34 cm., length of base: 30 cm.
 - b. In centre: see Pl. XII.
 - c. 1M. 60274 (to the right)
Remains of a clay model, found, in fragments, in Temple I, on floor (level III).
Height: 30 cm., length of base 28 cm.

Pl. XIV:

1. *Upper row (from the left):*
 - 1M. 60269: reddish-buff ware; height: 10 cm., rim dia. 9.3 cm. level III to the south of Temple 1.
 - 1M. 60282: height 12.5 cm., rim dia. 9 cm. Level IV, in front of the entrance of Temple 2.
 - 1M. 60267: greenish-brown ware, slightly burned; height: 11.8 cm., width at middle: 14 cm. Level IV; outside Western wall of Temple 2.
 - 1M. 60264: Crudely made, reddish-buff globular hole-mouthed jar, height: 9.5 cm., rim dia. 7.2 cm. Level IV, in front of the entrance of Temple 2.

Lower row (from the left):

- 1M. 60265: buff-ware, broken and mended, ring base; height: 9.5 cm. Level IV,

infront of the entrance of Temple 2.

IM. 60263: reddish-buff; height: 9 cm. Level IV, infront of the entrance of temple 2.

IM. 60279: Zoomorphic vessel, broken, perhaps a hedgehog, reddish-buff clay with traces of burning; length 13.5 cm., width: 8.5 cm. Trench A, level III, on floor.

IM. 60281: Strainer; reddish-buff with traces of burning height 7 cm., rim dia. 11 cm. Trench B, level III, in fill.

2. Upper figure (Basmusian cat. no. 8):

Large jar with four vertical handles, height: 65 cm., rim dia. 23 cm. base dia. 22 cm., width at middle: 44 cm. Trench A, level 1.

Lower row

Left: Bas. cat. no. 10: buff-ware; height: 34 cm., rim dia. 12.5 cm., base dia. 13.5 width at middle 27.5 cm. Trench A, level 1.

Right: Bas. cat. no. 9: Greenish-buff ware; height: 44 cm., rim dia. 11 cm., width at middle: 28 cm., 5 cm., Trench A, level I on floor.

Pl. XV.

Top row (from the left):

IM. 60268: broken and mended; reddish-buff with traces of burning; height: 10.5 cm., width: 9 cm. Temple 2, level IV.

IM. 60276 (A and B): two fragments, reddish-buff, belonging to a large ritual vessel decorated on the outside with animal figures: a leopard, goats and snakes. Found on the floor of Temple 2, level IV., near its eastern wall.

IM. 60256: reddish-buff ware, height: 12 cm., rim dia. 24 cm., width at middle: 28 cm., Trench A; level 1.

Second row (from the left):

IM. 60272: a lid with a central knob; reddish-buff; height: 5 cm., dia. 19 cm. Trench A; level II in fill.

IM. 60288: A clay fragment of an animal figurine representing parts of the head and upper body, perhaps a goat; height: 14 cm., surviving length: 9 cm., height of head 12 cm. Trench A, level II. (See Pl. XXXVII, no. 3).

IM. 60277: Incised grey ware; remaining height: 12 cm. Trench A; Level II. Found in a disturbed spot.

IM. 60285: Clay model of a claw; remaining height: 10 cm. Trench B, level I, in fill.

IM. 60271: Small clay lid with a central knob; dia. 8cm., thickness: 2 cm. Trench A, level I in fill.

IM. 60258: Small saucer, reddish-buff, dia. 14 cm. Trench A, level I.

IM. 60275: Clay lamp, reddish-buff; length: 12.5 cm., height: 4.5 cm. Trench A, level I in fill.

Third row (from the left):

IM 60260: Small deep plate, reddish-buff; height: 3.5 cm., rim dia. 11 cm. trench A, level II.

IM. 60270: Deep carinated bowl, reddish-buff; height: 6.2 cm., rim dia. 13 cm.,

base dia. 5 cm., trench A, level II.

IM. 60259: Deer cup with rounded bottom; reddish-buff; height: 9 cm., rim dia. 7 cm. Trench A, level II.

IM 60280: Small jar with wide open month, brownish-buff; height: 7.6 cm., rim dia.: 10 cm., base dia: 7.1 Trench A, level II.

IM. 60261: Small spouted jar with wide open mouth, reddish-buff, height: 7.5 cm., rim dia: 6 cm. Trench B, level II.

IM. 60286: A broken jar handle of mother goddess type; height: 10 cm., Trench A, level II.

IM. 60287: Pottery leg, incised with fingernail impression; height: 6.5 cm., length of foot: 5.5 cm. Trench B, level II.

IM. 60283: Jar stopper with central knob, height: 7.4 cm., top dia. 8.2 cm. Trench A, level II.

IM. 60262: Tripod bowl, reddish-buff, height: 7 cm., rim dia. 12.6 cm. Trench B, level II.

Bottom row (from the left):

IM: 60278: Fragment from a large clay vessel, length: 28.5 cm., height 9 cm., with the remains of animal in relief, perhaps a leopard (see Pl. XXXII, no. 2). Level IV, outside Temple 2, on the south.

IM. 60266: Small alabaster bowl, height: 3.1 cm., rim dia. 7.6 cm. Level IV, outside southern wall of Temple 2.

IM. 60275: Fragment from a clay vessel; height: 5.5 cm., length: 8.5 cm. with a goat in relief (See Pl. XXXVIII, no. 1). Level III, outside the southern corner of Temple 1.

IM. 60290: Clay figurine in relief, height: 11 cm., width: 5 cm. Trench B, level III in fill.

IM. 60293: Clay animal head with horns and starred forehead, perhaps an ox; height: 7 cm. width at forehead: 6 cm., level IV, to the east of Temple 2.

IM. 60291: clay ram's head with long incised horns; height: 4.5 cm. level IV, in front of the entrance of Temple 2.

IM. 60289: Lower body of clay female figurine; height: 7 cm., width: 6 cm. Level III, Temple I on floor.

IM. 60292: a broken clay painted duck or horn; remaining height: 9 cm., dia. 5.5 cm. Level IV, in front of the entrance of Temple 2.

Pls. XVI-XVII:

Details of various objects illustrated on Pl. XV.

Pl. XVIII:

Top row (from the left):

IM. 60246: Translucent crystal perforated bead; dia. 2.4 cm. Trench A, level II.

IM. 60253: Two incised bone beads; the lower one is stained red. Trench B, Level II.

IM. 60248: Square, perforated, lapiz-lazuli bead; length. 2 cm. Trench B, level II in fill.

IM. 60252: Small incised bone bead; dia. 2.2cm. Trench B, level II in fill

IM. 60242: White-stone cylinder seal with impression; length: 4 cm., dia. 1.8 cm. Trench A, level I in fill. Typical Jamdat Nasr geometrical design.

Second row (from the left):

IM. 60247: Seven carnelian and one translucent crystal beads. Trench A, level II in fill.

IM. 60251: Small incised bone bead dia. 1.5 cm. Trench A, Level II in fill.

1M. 60245: Small carnelian bead, dia. 1.5 cm., Trench A, level I in fill.

1M. 60284: clay incised spindle-whorl; dia. 3.5 cm. Trench A, level I in fill

Third row:

IM. 60249: black-stone celt or whet-stone perforated at one end; length: 6.5 cm., width: 1 cm. Trench A, level III in fill.

1M. 60244: White-stone bead, dia. 2.5 cm. Trench A, level III in fill.

1M. 60250: Black-stone bead; dia. 2 cm. Trench A, level III in fill.

IM. 60243: Small, highly fired, clay cylinder seal with impression, length: 2.8 cm. Trench A, level III in fill.

Bottom (right):

1M. 60254: Small incised bone bead with impression, dia. 2 cm. level III, Temple 1.

Pl. XIX: (from the top)

1M. 60220: "Copper/bronze" knife, length: 22.7 cm. level IV, to the east of the eastern wall of Temple 2. Bas. cat. no. 97: "Copper/bronze" point, length: 12.8 cm. level IV, in front of the entrance of Temple 2.

IM. 60236: Bone awl, length: 6.6 cm. level IV, in front of the entrance of Temple 2.

IM. 60219: "Copper/bronze" Spoon (or spatula), remaining length: 7.8 cm level IV in front of the entrance of Temple 2.

IM. 60221: "Copper/bronze" sickle, length: 18 cm. Trench A, level III in fill.

IM. 60230: "Copper/bronze" hook, remaining length: 8.5 cm. Trench A, level III in fill.

IM. 60238: "Copper/bronze" statu of a calf, total height: 14 cm. animal length: 8 cm. level III, to the east of Temple I in fill.

IM. 60240: and 1M. 60:241: fragments of letters from a pit cut into outside the south-eastern wall of Temple 2. probably Middle Assyrian (Cf. J. Laessoe, *Sumer* Vol. XV, 1959, pp. 15-18). Bas. Cat. no. 83: iron ring, dia. 7.4 cm. level III, Temple 1.

Pl. XX:

IM. 60238: (figure to the left), detail of calf on plate XIX.

IM. 60237: (figure to the right), Small "Copper/bronze" figure, height: 6.7 cm. width at shoulder: 2.2 cm. Trench, A, level II in fill.

Pl. XXI: (from the top)

Bas. Cat. no. 68: spear head, iron, length: 20.5 cm. Trench A, level I, in fill.

1M. 60228: Anklet, "Copper/bronze", dia. 8 cm. level III, 2 m. to the west of west wall of Temple I. Bas. Cat. no. 26: small bowl, "Copper/bronze"; rim dia. 5 cm.

height: 2.5 cm. Trench B, level I. Bas. Cat. no. 7: small bowl, "Copper/bronze", rim dia. 6 cm., height: 3.2 cm., base dia. 3.5 cm. Trench A, level I, in fill. Bas. Cat. no. 16: broken anklet, "Copper/bronze", dia. 8 cm., Trench A, level I in fill. Bas. Cat. no. 17: needle, "Copper/bronze", length: 8 cm. Trench A, level I in fill. IM. 60229: "Copper/bronze" object, length: 12.8 cm. level I in fill. Bas. Cat. no. 107: needle, "Copper/bronze", length 9.2 cm. level IV, Temple 2. 1M. 60239: Silver cup, height: 9.5 cm., rim dia. 7.5 cm. level IV, Temple 2 on floor.

Pl. XXII:

Top row (from the left):

Bas. Cat. no. 65: badly damaged "Copper/bronze" lamp, length: 11.2 cm. height: 3 cm. Trench B, level II in fill.

1M. 60216: "Copper/bronze" lamp, length: 12.5 cm., width 7.3 cm. Trench B, level II in fill.

IM. 60213: "Copper/bronze" lamp with three arms, length: 11.4 cm., width: 6 cm. Trench B, level II in fill.

Second row (from the left):

IM. 60215: "Copper/bronze", lamp, Trench B, level II, in fill.

IM. 60214: Small vessel, "Copper/bronze", rim dia. 7.1 cm., height: 2.2 cm. Trench B, level II.

IM. 60211: Small "Copper/bronze" vessel, rim dia. 6.5 cm., height: 2.5 cm. Trench A, level II in fill.

IM. 60212: Small "Copper/bronze" vessel, rim dia. 6.8 cm. height: 3.8 cm. Trench A, level II in fill.

Third row (from the left):

IM. 60231: Two small "Copper/bronze" lids, each is 4.4 cm. in dia. Trench B, level III in fill.

IM. 60233 and 1M. 60234: Two "Copper/bronze" brachlets, each is 4.5 cm. in dia. Trench B, level II.

Fourth row (from the left):

IM. 60218: "Copper/bronze" sickle, length: 17 cm., width 2.4 cm. Trench B, level II.

IM. 60223: A bronze mortar's handle, perhaps modern, length: 20 cm. Trench A, in pit cut into level II.

Bottom row (from the left):

1M. 60217: A "Copper/bronze" dagger, length: 24 cm. Trench A, level II in fill.

1M. 60235: A "Copper/bronze" chisel, length: 16.5 cm. Level III, Trench A.

Pl. XXIII:

Top Row (from the left):

IM. 60227: A "Copper/bronze" awl, length: 11.2 cm. Trench B, level II in fill.

IM. 60232: A "Copper/bronze" needle, length: 8 cm. Trench B, level II in fill.

Bas. Cat. No. 64: A "Copper/bronze" awl, length: 12.4 cm. Trench E, level II in fill.

Bas. Cat. no. 45: A "Copper/bronze" awl, length: 13. Trench A, level II in fill.

IM. 60222: A "Copper/bronze" object, length: 10.2 cm., Trench A, level II.
IM. 60225: A "Copper /bronze" tweezers, length: 6.5 cm. Trench A, level II.
IM. 60224: Fragment of "Copper/bronze"; height: 3 cm., width: 3.5 cm. Trench A, level II.

Bottom row (from the left):

Bas. Cat. no. 44: A "Copper/bronze" fragment. Trench A, level II, in fill.
Bas. Cat. no. 96: two "Copper/bronze" nails, length of each: 1.8 cm., top dia. of each: 1.8 cm. level II, in front of the entrance of Temple 1.
Bas. Cat. no. 27: small "Copper/bronze" ring; dia. 3 cm., Trench A, level II.
Bas. Oat. No. 43: a "Copper/bronze" object; dia. 4 cm., Trench A, level II in fill.

Pl. XXIV:

1. Bas. Cat. no. I: reddish-buff ware, height: 14 cm., width: 15.5 rim dia. 12 cm. base dia. 10 cm. trench A, level I on floor.
2. Bas. Cat. no. 84: buff ware; height: 8.5 cm., width 11.5 cm., rim dia. 7.6 cm. Trench B, level I in fill.
3. Bas. Cat. no. 58: buff ware, height: 14.2 cm., width: 10.5 cm., rim dia. 7.5 cm., base dia. 7 cm. Trench 13, level II in fill.
4. Bas. Cat. no. 114: reddish-brown ware; height: 11.5 cm. width: 8 cm. Outside western wall of temple 2, in pit cut into level IV.
5. Bas, Cat. no. 3: greenish-buff; height: 12 cm., width: 9 cm., rim dia. 5 cm. base dia. 5 cm. Trench A, level I on floor.

Pl. XXV:

1. Bas. Cat. no. 24: buff ware, grooved body; height: 15.5 cm., width: 13 cm., rim dia. 11 cm. Trench B, level I in fill.
2. Bas. Cat. no. 118: reddish-brown ware; height: 10 cm., width: 11 cm., rim dia. 0.3 cm. level IV, to the south of Temple 2 in fill.
3. Bas Cat. no. 75: buff ware, incised groove on body; height: 21.5 cm., width: 17.5 cm., rim dia. 10.5 cm. Trench B, level II, in fill.
4. Bas. Cat. no. 146: brown ware; height: 7.6 cm., base dia. 7.3 cm. Trench B, level II in fill.
5. Bas. Cat. no. 12: reddish-buff ware; height: 12 cm., width: 28 cm., rim dia. 24 cm. Trench A, level 1 on floor (1M. 60256).

Pl. XXVI:

1. Bas. Cat. no. 9: (see Pl. XIV, 2, below right).
2. Bas. Cat. no. 2: greenish-buff; height: 19 cm., width: 15 cm., rim dia. 11 cm., base dia. 9 cm. Trench A, level I on floor.
3. Bas. Cat. no. 11: reddish-buff; height: 31 cm., width 22 cm., rim dia. 11.5 cm., base dia. 14 cm., Trench A, level I on floor.
4. Incised fragment; trench A, level 1.
5. Bas. Cat. no. 10: buff ware; height: 34 cm., width: 27.5 cm., rim dia. 12.5 cm., base dia. 13.5 cm. Trench A, level I on floor.

Pl. XXVII:

1. Broken jar; greenish-buff, incised shoulder. Trench A, level 1.
2. Potsherd with Barbotine design. Trench A, level 1.
3. Handle with Barbotine design. Trench A, level I.
4. Potsherd with geometric incised design. Trench B, level I.
5. Potsherd with Barbotine design. Trench A, level I.
6. Bas. Cat. no. 14: buff colour; length: 2.5 cm., height: 4.5 cm. Trench A, level I in fill.

Pl. XXVIII:

Pottery lamps.

1. and 4. Bas. Cat. no. 35: glazed green; height: 9 cm., length: 13 cm., Trench A, level II.
2. Bas. Cat. no. 89: glazed green; length: 4 cm., height: 2 cm. level III, outside Temple I in fill.
3. Bas. Cat. no. 77: glazed silver-white; length: 11.5 cm. height: 5.5 cm. Trench B, level II.
5. Bas. Cat. no. 93: glazed green; length: 7.5 cm., height: 4.8 Trench A, level I.
6. Bas. Cat. no. 14: buff colour; length: 2.5 cm., height: 4.5 cm. Trench A, level I in fill.

Pl. XXIX:

1. Bas. Cat. no. 87: brownish-buff; height: 4 cm., rim dia. 9.5 cm. Trench B, level I in fill.
2. Bas. Cat. no. 13: buff ware; height: 3 cm., rim dia. 9 cm., base dia. 6 cm. Trench A, level I in fill.
3. Bas. Cat. no. 147 (1M. 60281): strainer, reddish-buff; rim dia. 11 cm. height: 7 cm. Trench B, level III in fill.
4. Bas. Cat. no. 116: strainer, reddish-buff; rim dia. 7 cm., height: 4.2 cm. level IV, outside western wall of Temple 2.
- 5.- 6. From level II.
7. From level III.
8. Bas. Cat. no. 6: small vessel with corrugated sides, glazed green; height: 2 cm., rim dia. 6.5 cm., base dia. 6 cm. Trench A, level I.
9. From level I.
10. From level II.
11. Bas. Cat. no. 82: small vessel with corrugated sides, glazed green; height: 2 cm., rim dia. 7.8 cm., base dia. 7.2 cm. Trench B, level II.
12. Bas. Cat. no. 48: small vessel with four lugs; height: 2.5 cm., rim dia. 6 cm., base dia. 4.7 cm. Trench B, level II.
13. Bas. Cat. no. 134: glazed green; height: 2 cm., rim dia. 6.7 cm. Trench A, level III.

Pl. XXX:

1. Bas. Cat. no. 117: brownish-buff, upper part restored (see: Pl. XV. top row, first from left).
2. Bas. Cat. no. 145: brownish-buff, broken and mended; height: 8.6 cm., rim dia.

- 8.6 cm. Trench A, level II, in fill.
3. Bas. Cat. no. 90 (1M. 60263): reddish-buff; height: 9 cm. rim dia. 7 cm., level IV, in front of the entrance, of Temple 2.
 4. Bas. Cat. no. 22 (1M. 60259): (see Pl. XV, third row third from the left).
 5. Bas. Cat. no. 85 (1M. 60262): (see Pl. XV, third row, first from the right).
 6. Bas. Cat. no. 145 (1M. 60270): (see Pl. XV, third row, second from the left).
 7. Bas. Cat. no. 21 (IM. 60258): (see pl. XV, second row second from the right).
 8. Bas. Cat. no. 86: buff ware, height: 4 cm., rim dia. 9.5 cm. Trench A, level II in fill.
 9. Bas. Cat. no. 39: (IM. 60260): (see Pl. XV, third row, first from the left).
 10. Bas. Cat. no. 63: buff ware, height: 3.4 cm., rim dia. 11 cm., base dia. 4.7 cm. Trench B, level II in fill.

Pl. XXXI:

1. Bas. Cat. no. 98 (1M. 60265): (see Pl. XIV, bottom row, first from the left).
2. Bas. Cat. no. 108 glazed green, height; 7.5 cm., rim dia. 4.6 cm., width at belly 6.5 level IV, in disturbed part of Temple 2.
3. Bas. Cat. no. 106: buff ware, broken and mended; height: 8.8 cm., rim dia. 6.2 cm., base dia. 3 cm. level IV, Temple 2.
4. Bas. Cat. no. 4: buff ware; height: 9 cm., width 8 cm. Trench A, level I on floor.
5. Bas. Cat. no. 115 (IM. 60267): (see Pl. XIV top row, second from the right).
6. Bas. Cat. no. 91 (IM. 60264). (see Pl. XIV, top row, first from the right) possibly Uruk in origin.
7. Bas. Cat. no. 88 (IM. 60295): reddish-brown ware, spouted; height: 6.5 cm., rim dia. 3.7 cm. level III, in front of the entrance of Temple 1. Possibly Uruk in origin.
8. Bas. Cat. no. 132: reddish-brown; height: 7 cm., width: 7.4 cm., rim dia. 5.5 cm. Trench A, level III in fill. Possibly Uruk in origin.
9. Bas. Cat. no. 57 (1M. 60261): (see Pl. XV, third row in the middle. Trench B., level II. Possibly Uruk in origin.

Pl. XXXII:

Bas. Cat. no. 127 (IM. 60277): see Pl. XV, second row, third from the left.

Pl. XXXIII:

- 1- 8. From level IV, Temple 2.
9. From trench A, level II.
10. -11. and 13. From trench A, level III.
- 12 and 14. From trench B, level IV.

Pl. XXXIV:

1. Bas. Cat. no. 112 (1M. 60292): see Pl. XV, bottom row first from the right.
2. and 5. Painted Halaf potsherds; trench A. level IV in fill.
3. painted Ubaid potsherds; trench A, level IV in fill.
4. Painted Ubaid potsherd; Trench A, level I in fill.
6. From Trench A, level III in fill.

Pl. XX-XV:

1. Bas. Cat. no. 25 (IM. 60271): clay lid with a central knob, reddish-buff; dia. 8 cm. Trench A, level I in fill.
2. Clay lid; Trench A, level III in pit.
3. Clay lid; Trench A, level I.
4. Bas. Cat. no. 31 (IM. 60283): Clay stopper. (see Pl. XV, third row second from the right).
5. Clay lid; Trench B, level I.
6. Small clay lid; Trench B, level I.
- 7, 10-12. 15-16. knobs and handles of clay lids; trench A, level I in fill.
- 8-9, 13-14. Knobs of clay lids; trench B, level III in pit.

Pl. XXXVI:

1. and 3. From level II.
- 2, 8-9, 11-12. From level 1.
- 6-7, 10. From level III, in pit.
4. From level III, Temple I.
5. From level IV, Temple 2.

Pl. XXXVII:

1. Bas. Cat. no. 121 (IM. 60275): see Pl. XV, bottom row, third from the left.
2. Bas. Cat. no. 128 (IM. 60278): see Pl. XV, bottom row, first from the left.
3. Bas. Cat. no. 47 (IM. 60288): see Pl. XV, second row, second from the left.
4. Bas. Cat. no. 60: a broken brick fragment showing a foot or a claw; 14 cm by 10.5 cm. trench B, level II in fill.
5. Bas. Cat. no. 30 (IM. 60285): a broken brick fragment showing a foot or a claw; 10 cm. by 10 cm. Trench B, level I in fill.

Pl. XXXVIII:

1. IM. 60290: see Pl. XV, bottom row in the middle; and Pl. XVII, top row in the middle.
2. IM. 60289: see Pl. XV, bottom row, second from the right.
3. Bas. Cat. no. 59: thighs of a clay female figurine, height: 6 cm., width: 3 cm. Trench B, level II in fill.
4. Bas. Cat. no. 142 (IM. 60279): see Pl. XIV, I, bottom row, second from the right.
5. Bas. Cat. no. 5B (IM. 60287); see pl. XV, third row, third from the right.
6. Bas. Cat. no. 102: Perhaps a male figurine, reddish clay; height: 9 cm., width: 5 cm. Trench A, level I in fill.
7. Bas. Cat. no. 36 (IM. 60286): see Pl. XV, third row, fourth from the right.
8. Bas. Cat. no. 123 (IM. 60293); see Pl. XV, bottom row, fourth from the right.
9. Bas. Cat. no. 109 (IM. 60291): see Pl. XV, bottom row, third from the right.
10. Bas. Cat. no. 126: perhaps a bull's head; height: 9 cm., width: 4.2 cm., level III, north of Temple I in fill.
11. Bas. Cat. no. 137: ram's head; height: 4 cm. level III, north of Temple I.
12. Bas. Cat. no. 72: ram's head; height: 6 cm., width: 3.5 cm., Trench B, level II in fill.

Pl. XXXIX:

- 1-4. Rimsherds and base fragments from Temple 1, level III.
- 5-13. Rimsherds and base fragments from Temple 2, level IV.

Pl. XL:

Selected rimsherds and base fragments from level I (Trenches A and B).

Pl. XLI:

Selected rimsherds and base fragments from level II (Trenches A and B).

Nos. 11 and 12: painted.

Pl. XLII:

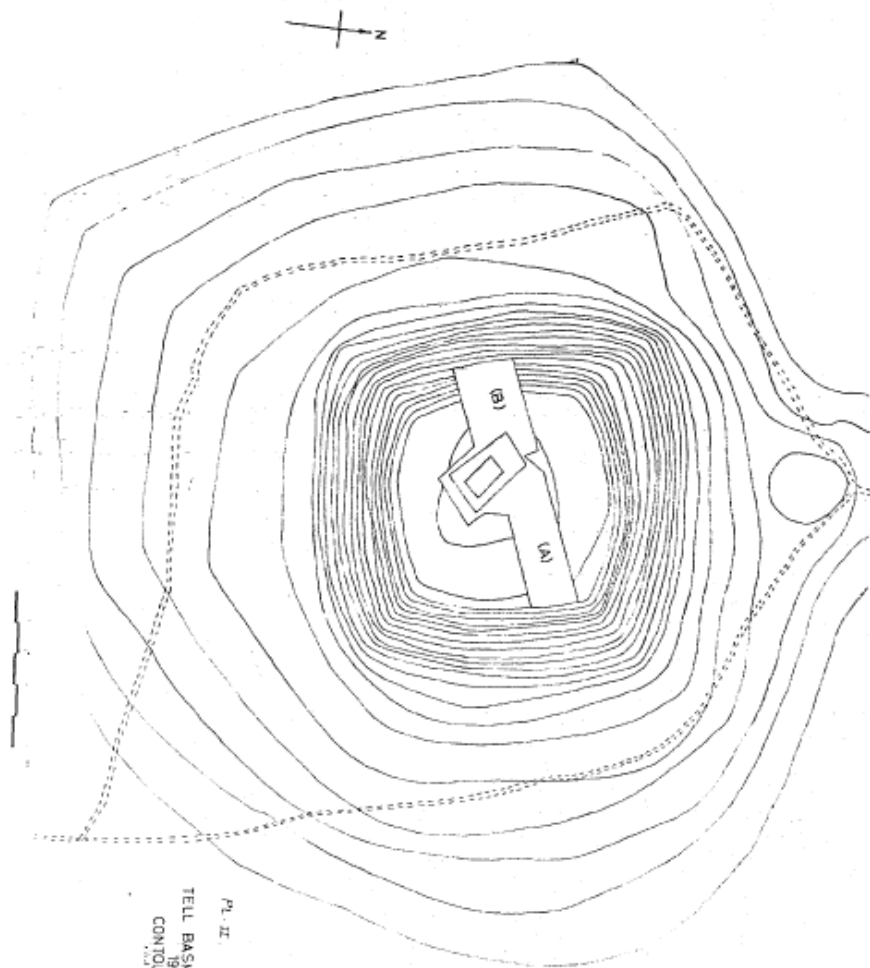
Selected rimsherds and base fragments from level III (Trenches A and B).

Pl. XLIII:

1-11. Selected rimsherds and base fragments from level IV.

12-17. Selected rimsherds from level V.

Pl. II



Pl. II
TELL BASAJSIYAN (DOKAN)
CONTOUR MAP



(1)



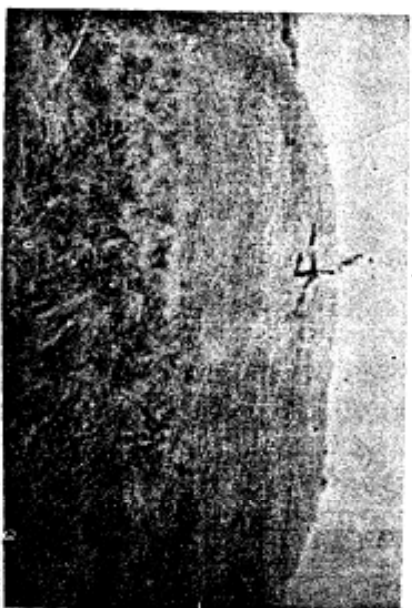
(3)



(2)



(1)



(2)



(3)



(4)



(1)



(2)



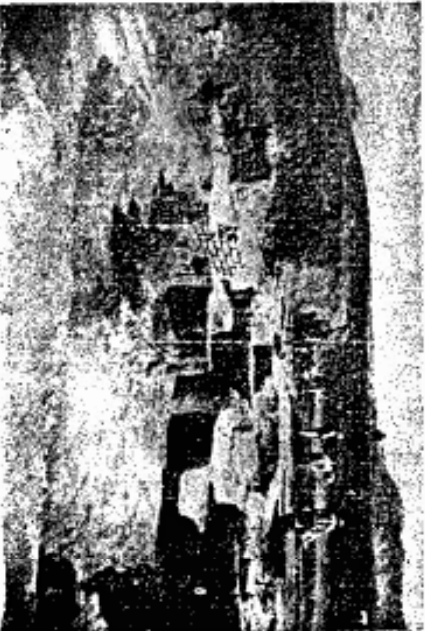
(1)



(2)



(3)



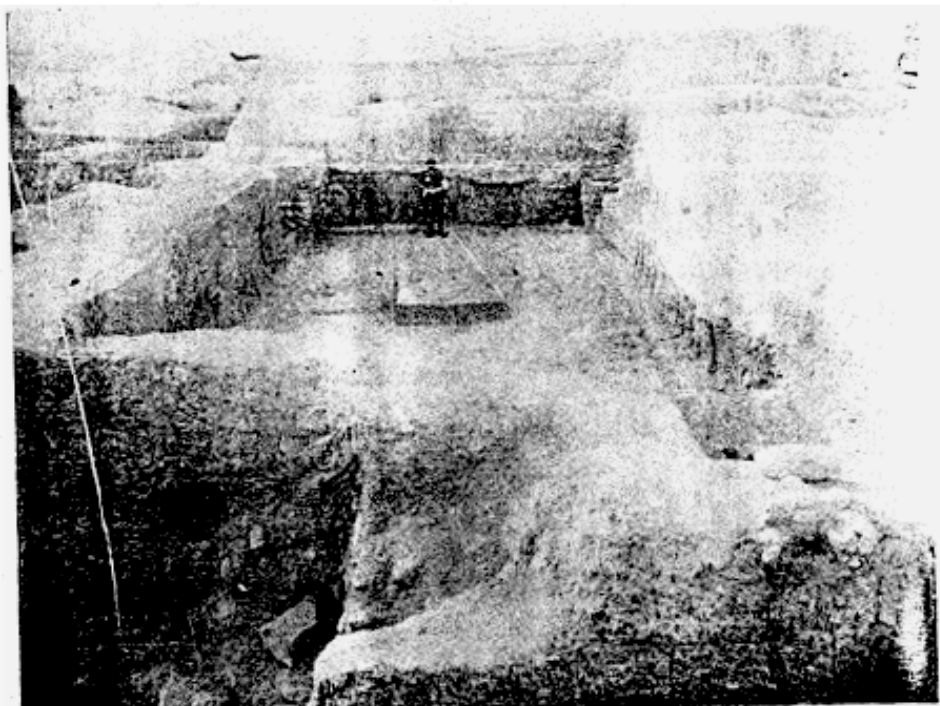
(4)



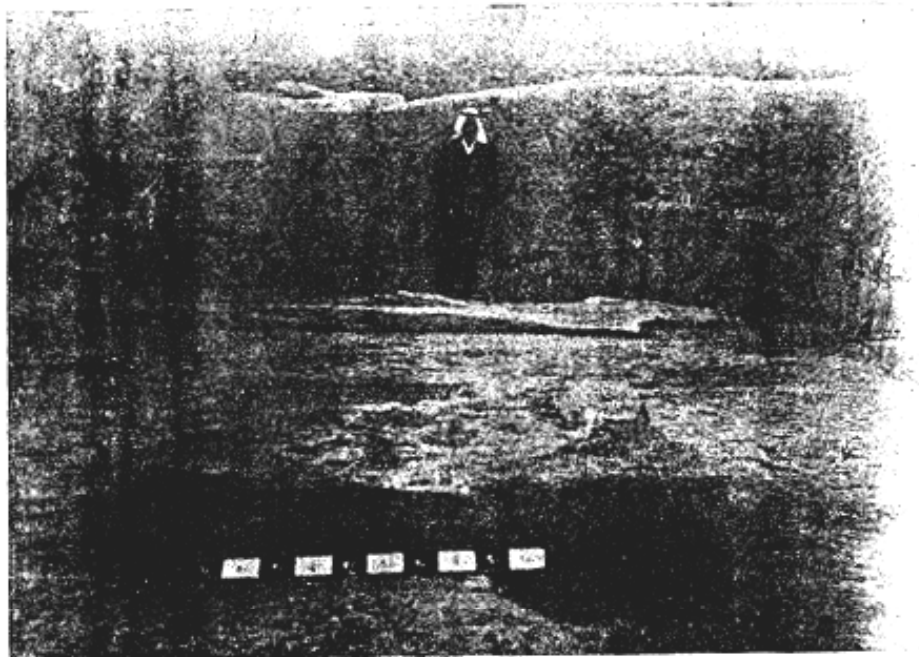
(1)



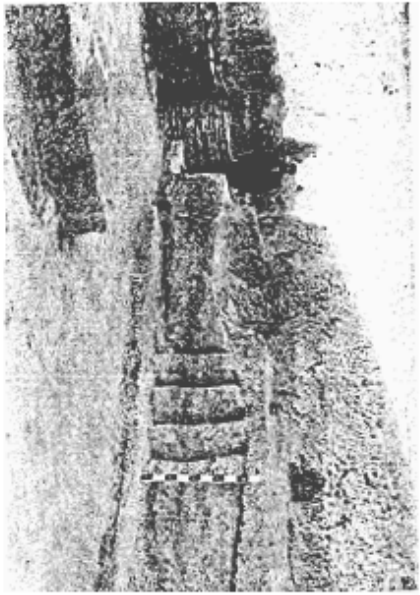
(2)



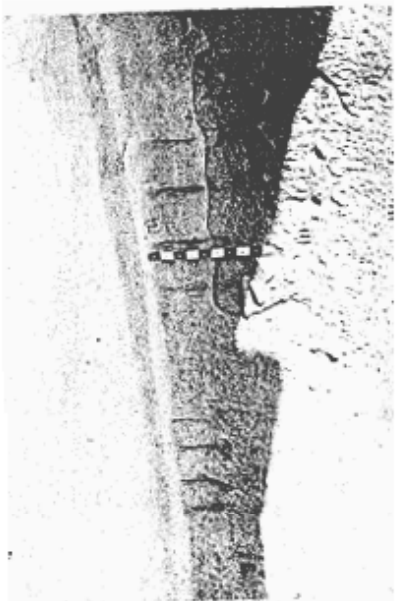
(1)



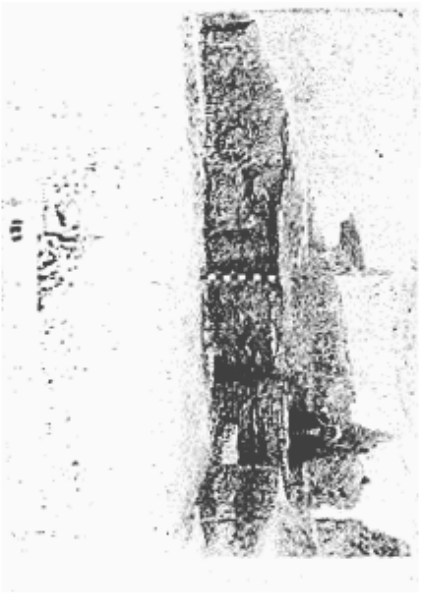
(2)



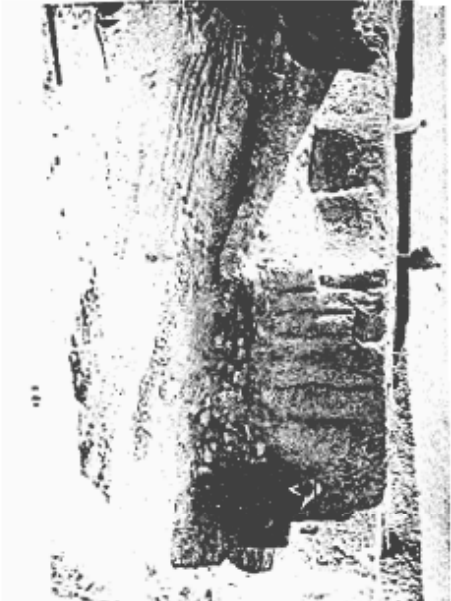
(1)



(2)

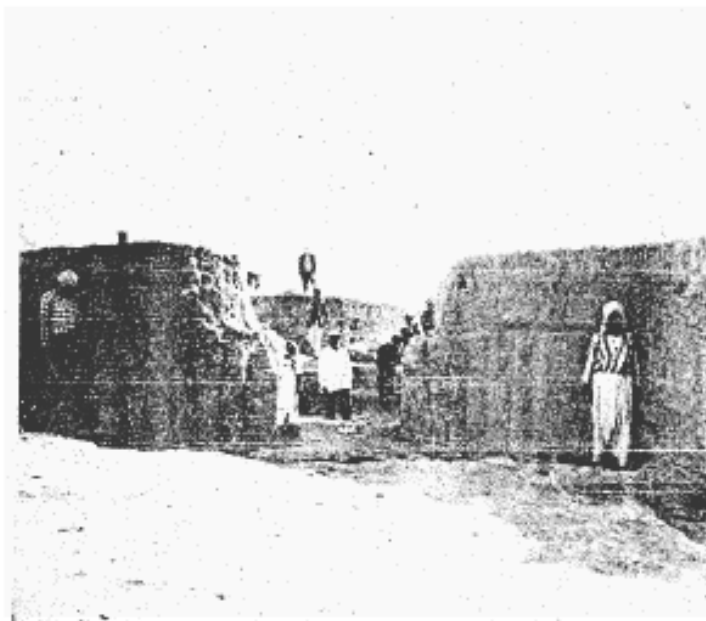


(3)

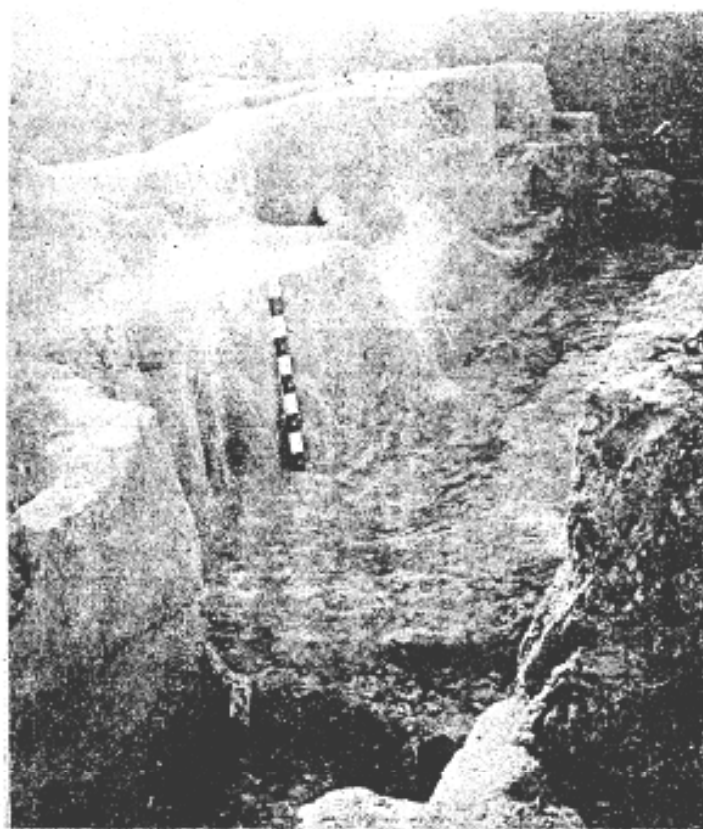


(4)

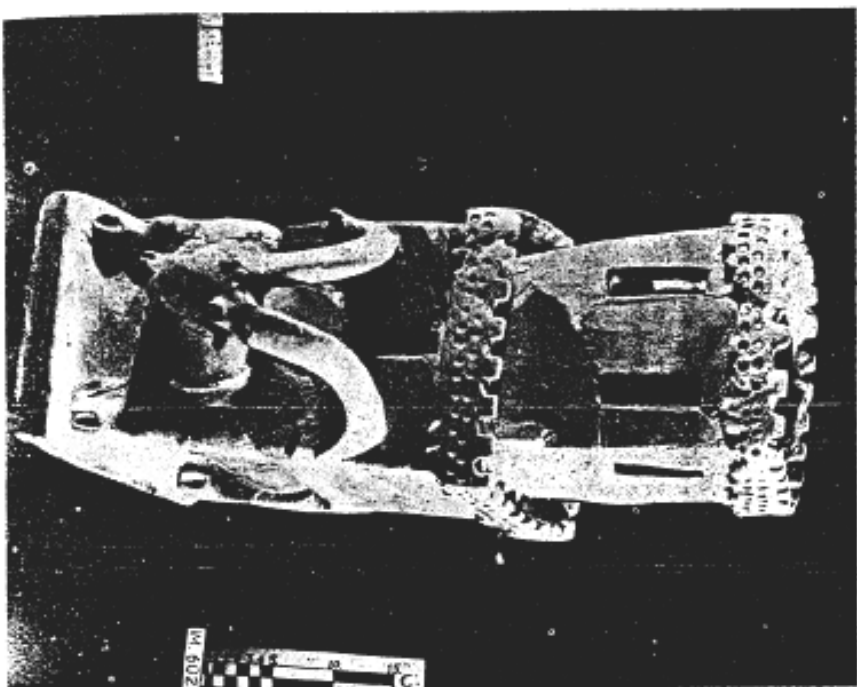
PL. XI



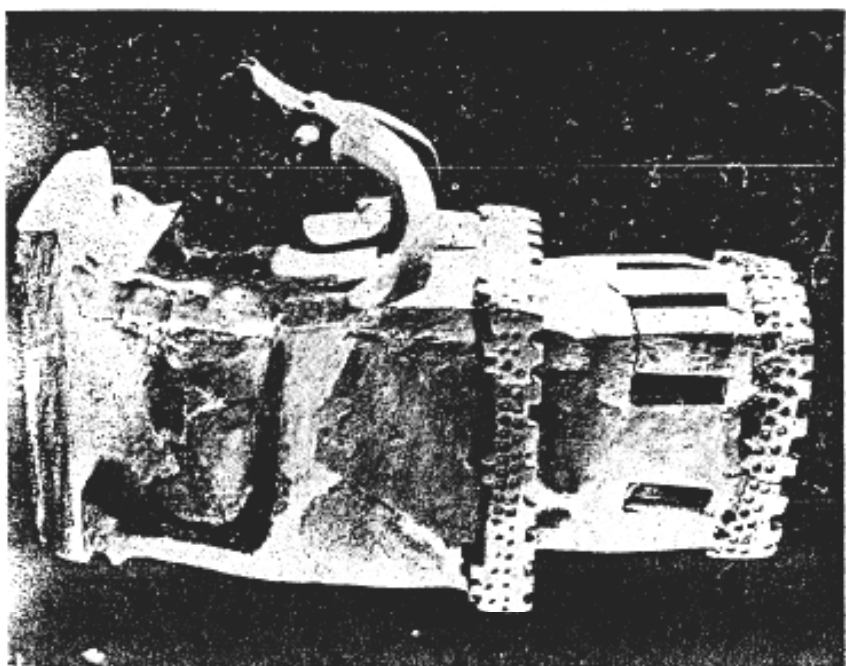
(1)



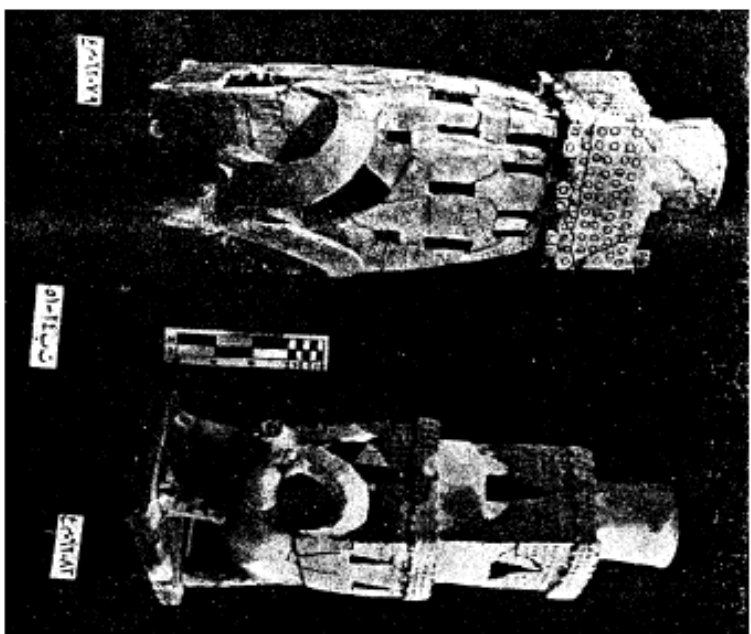
(2)



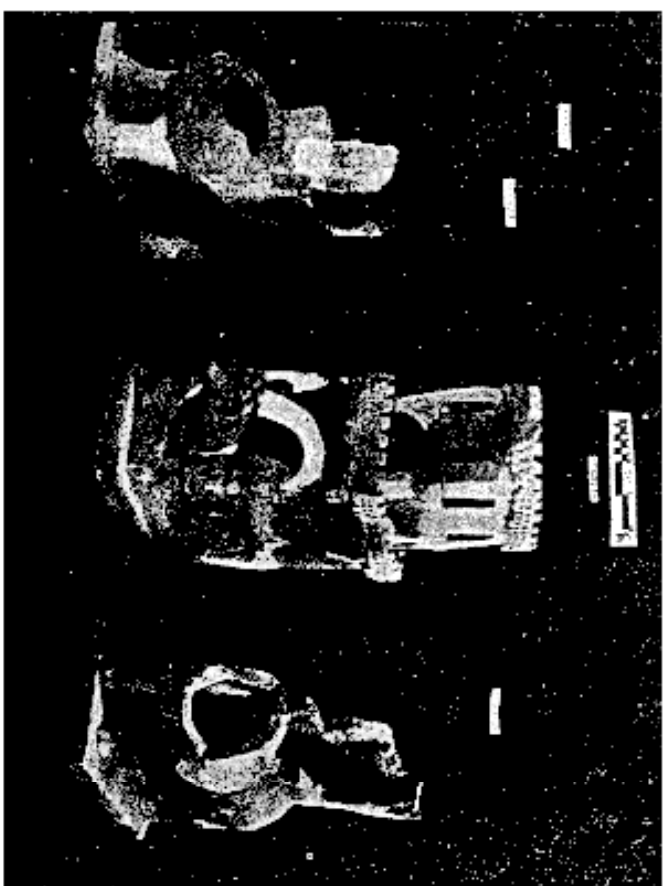
(1)



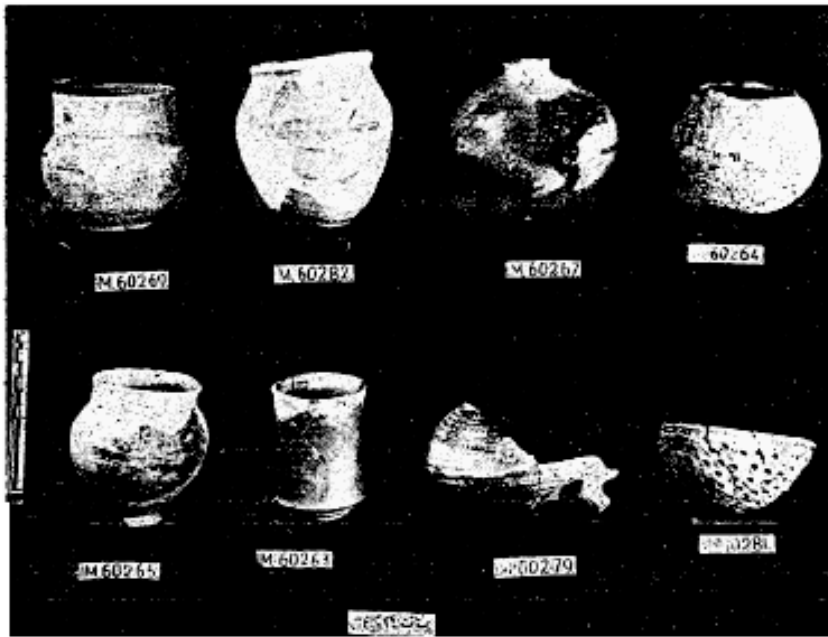
(2)



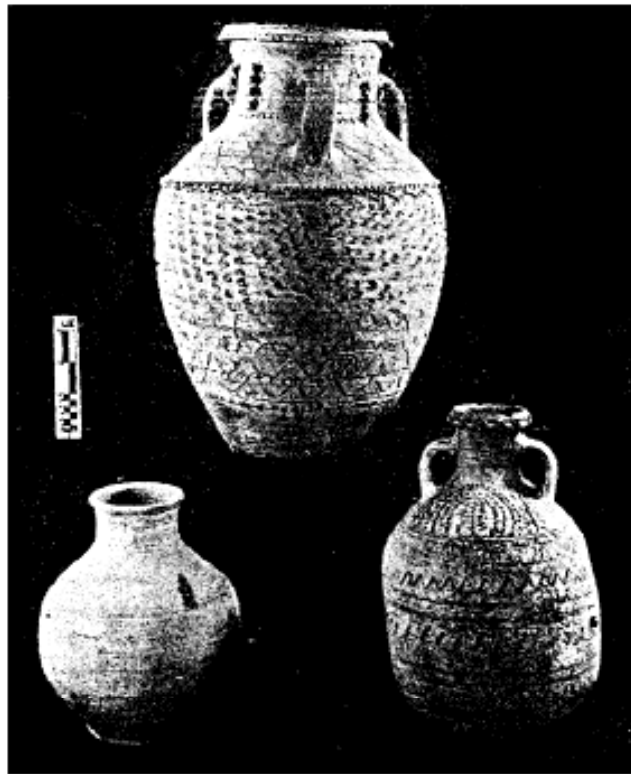
(1)



(2)

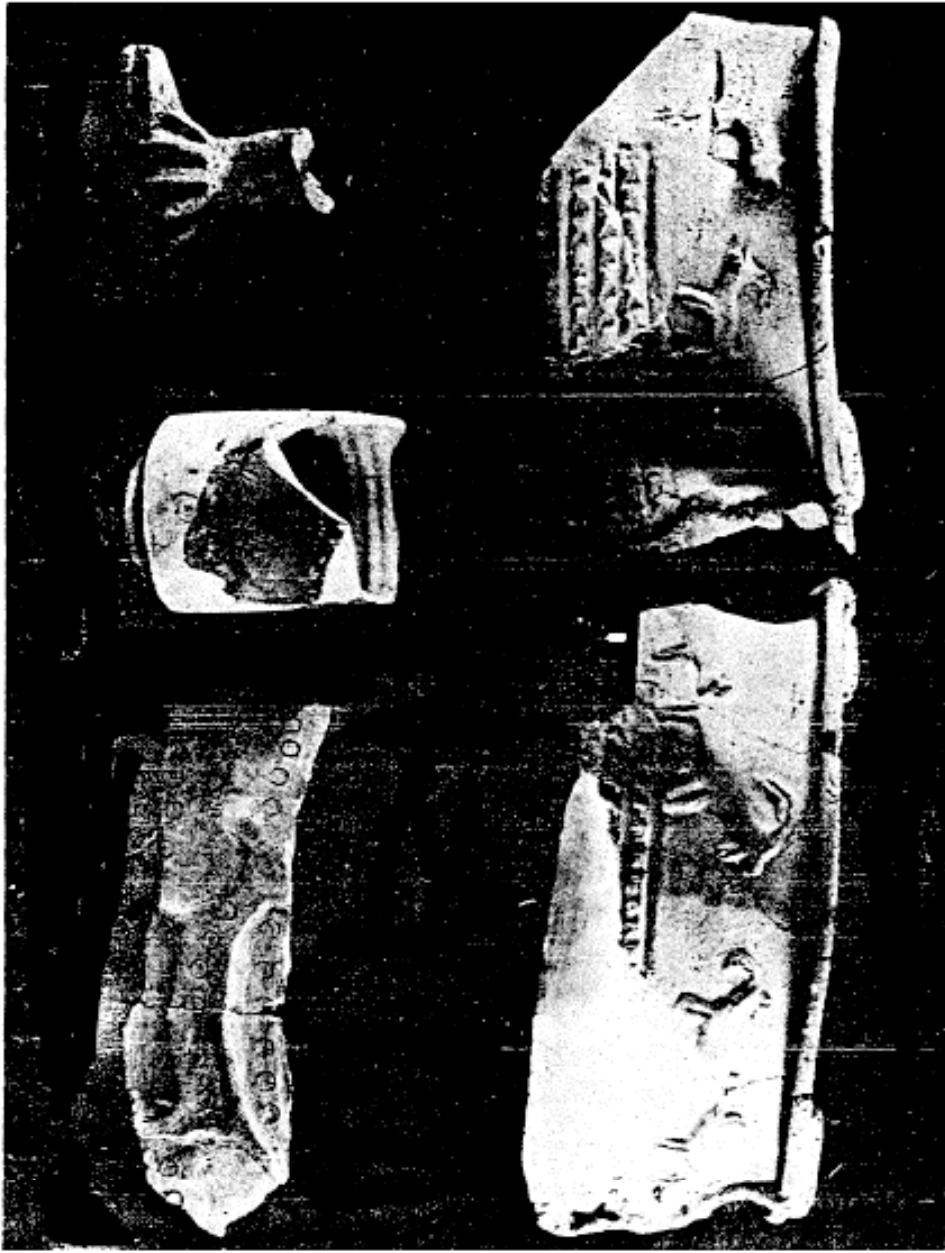


(1)

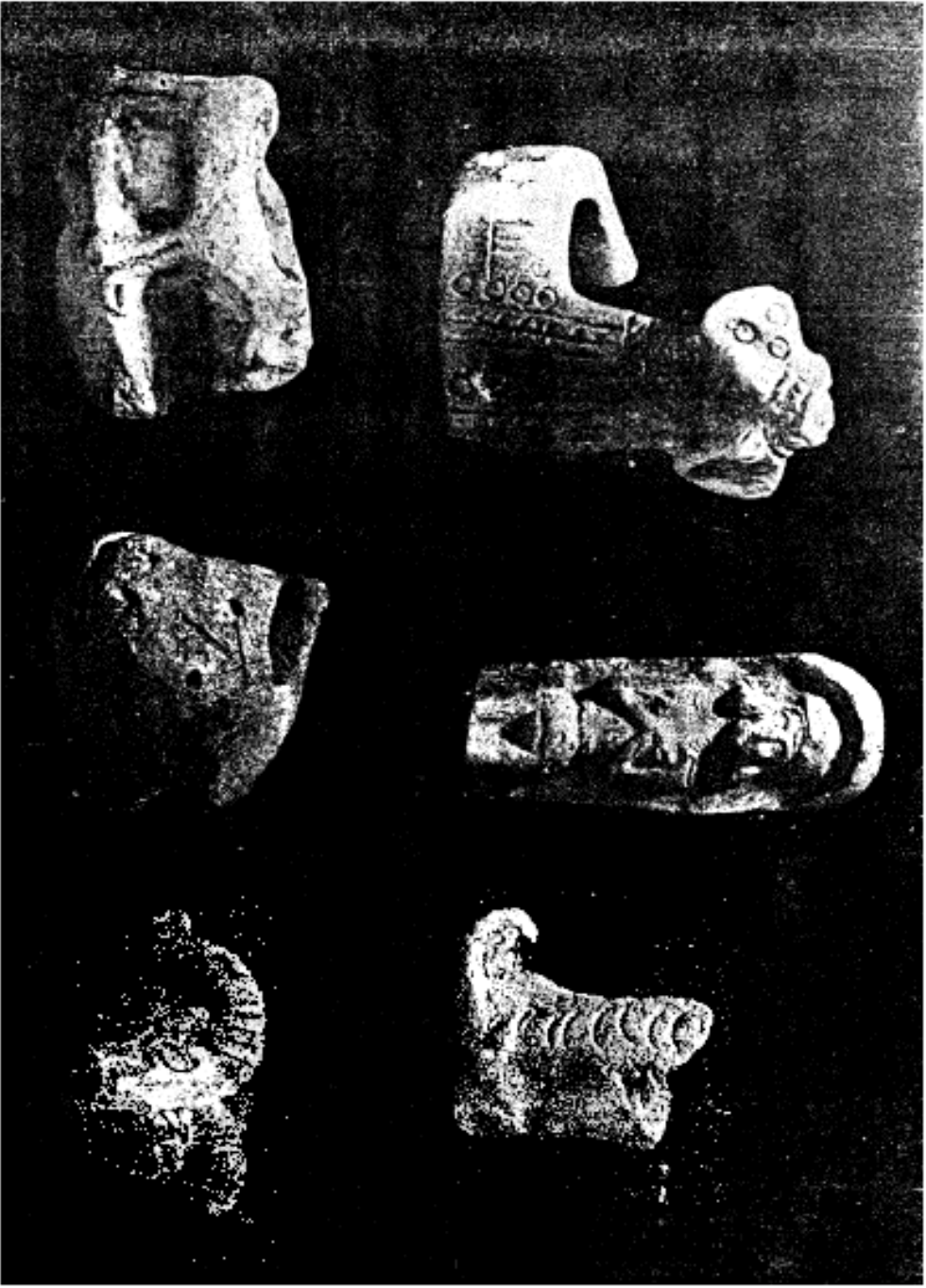


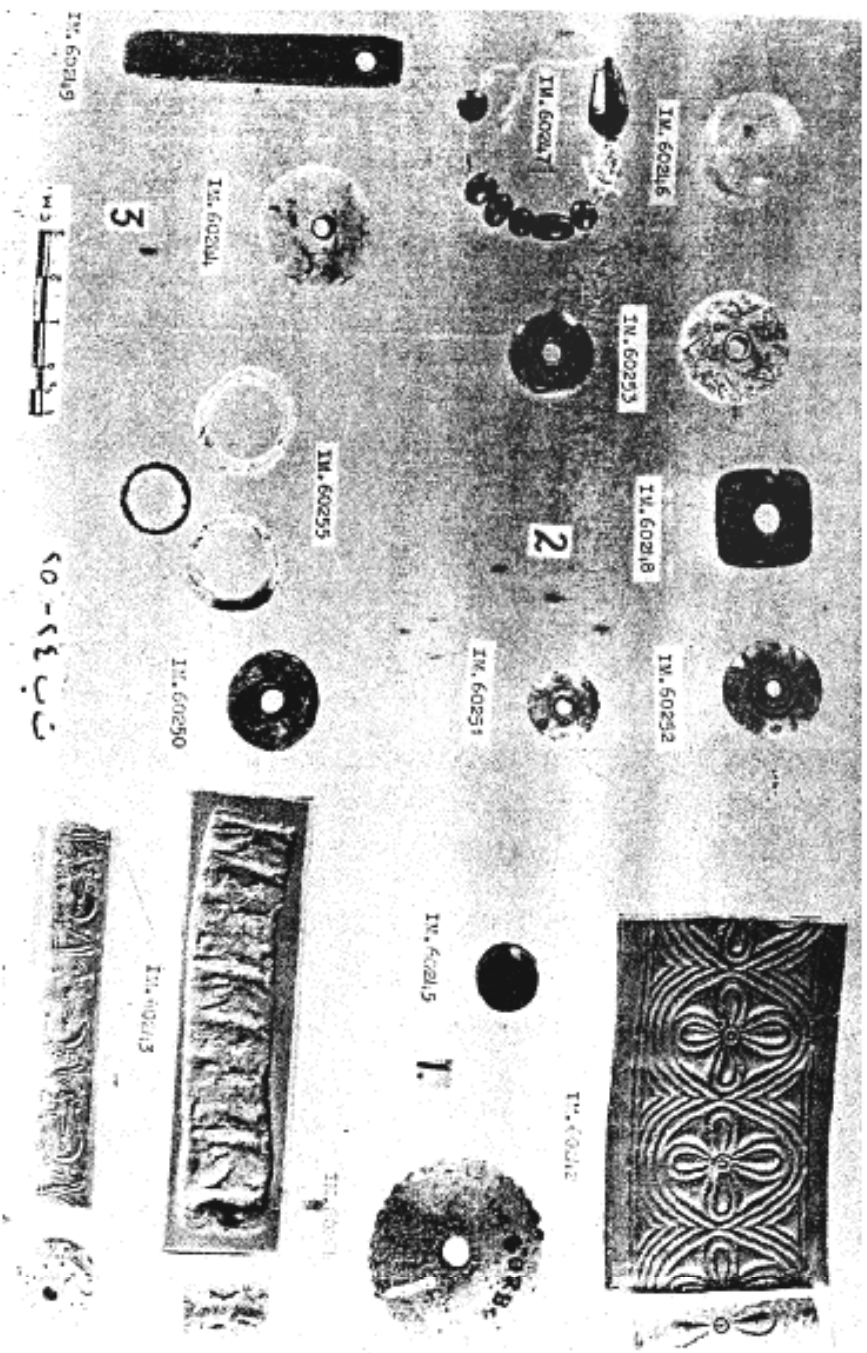
(2)

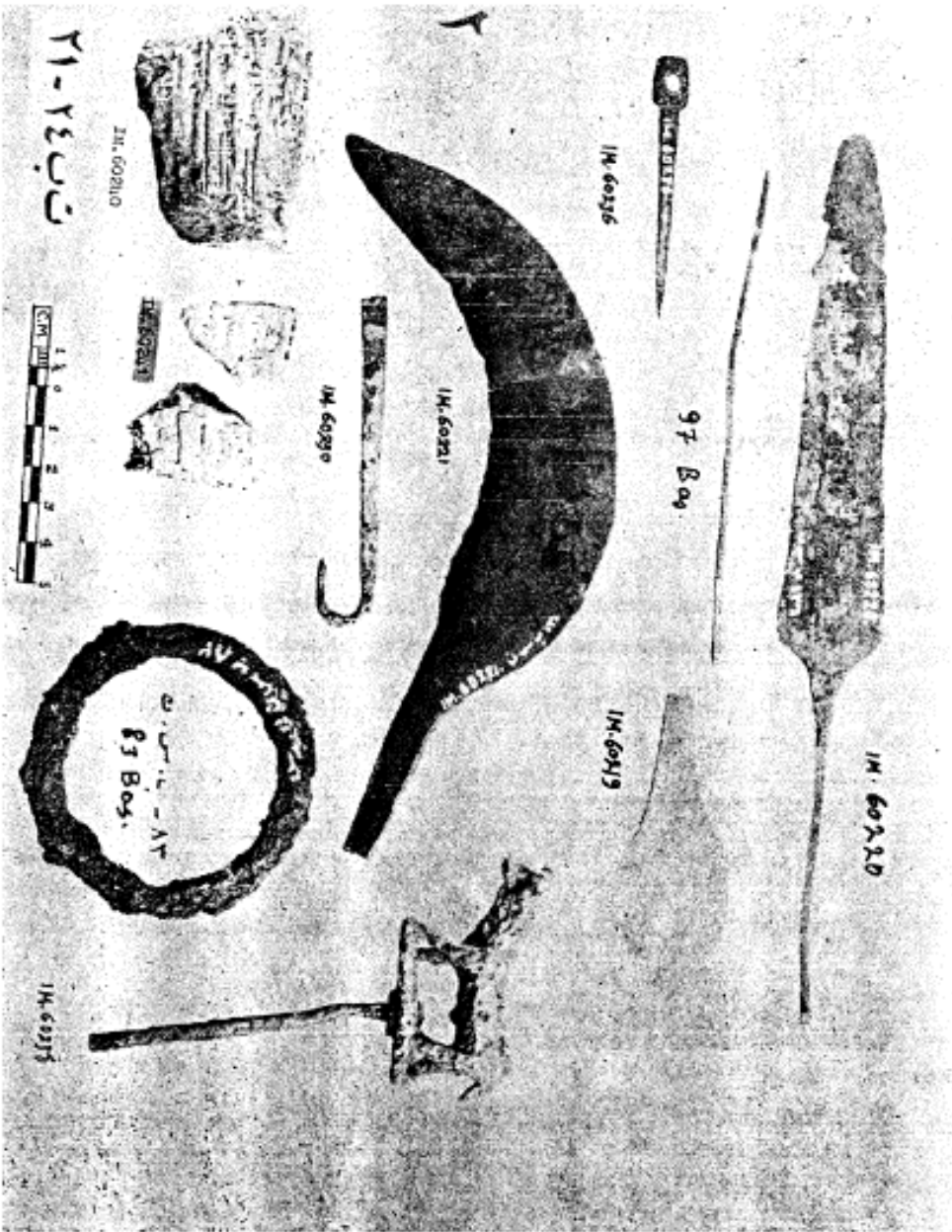


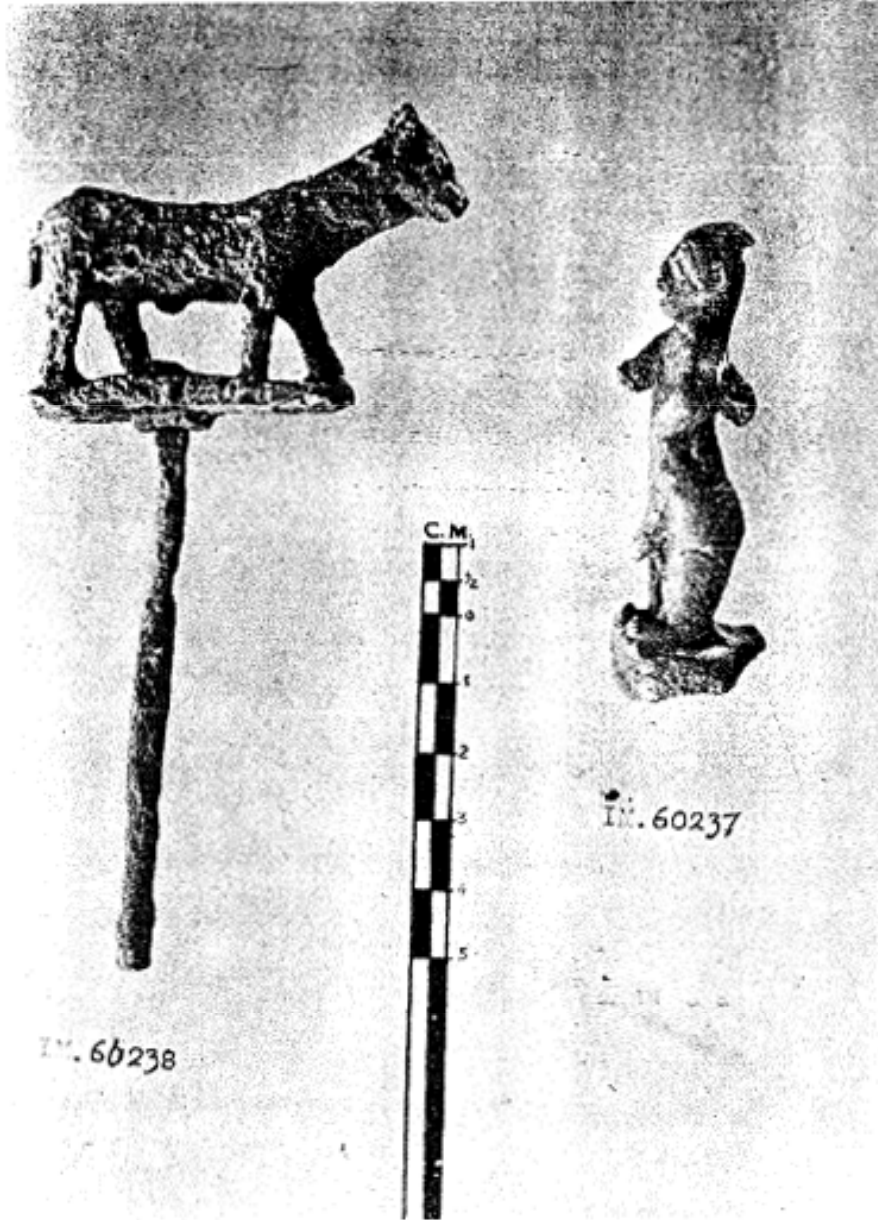


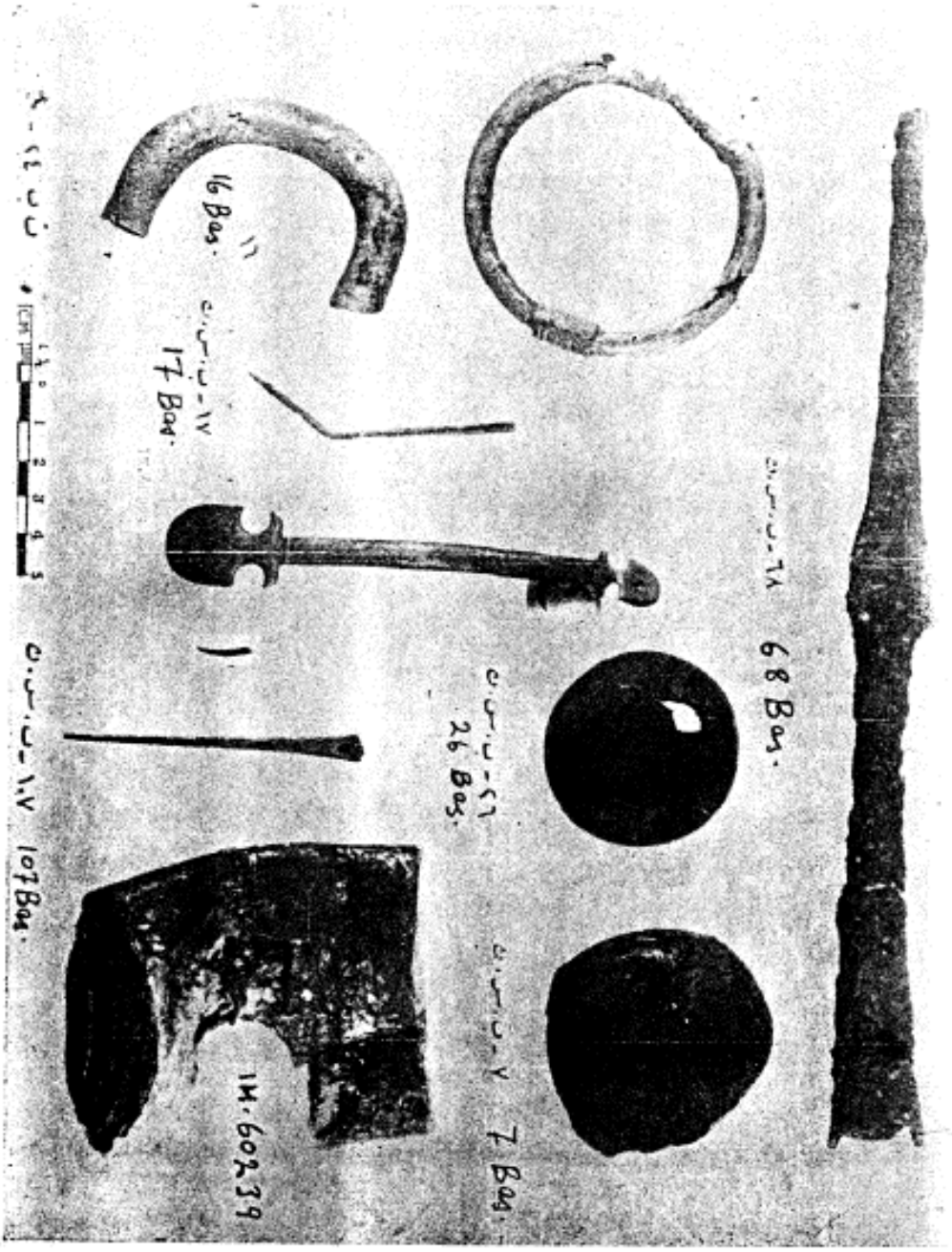
Pl. XVI

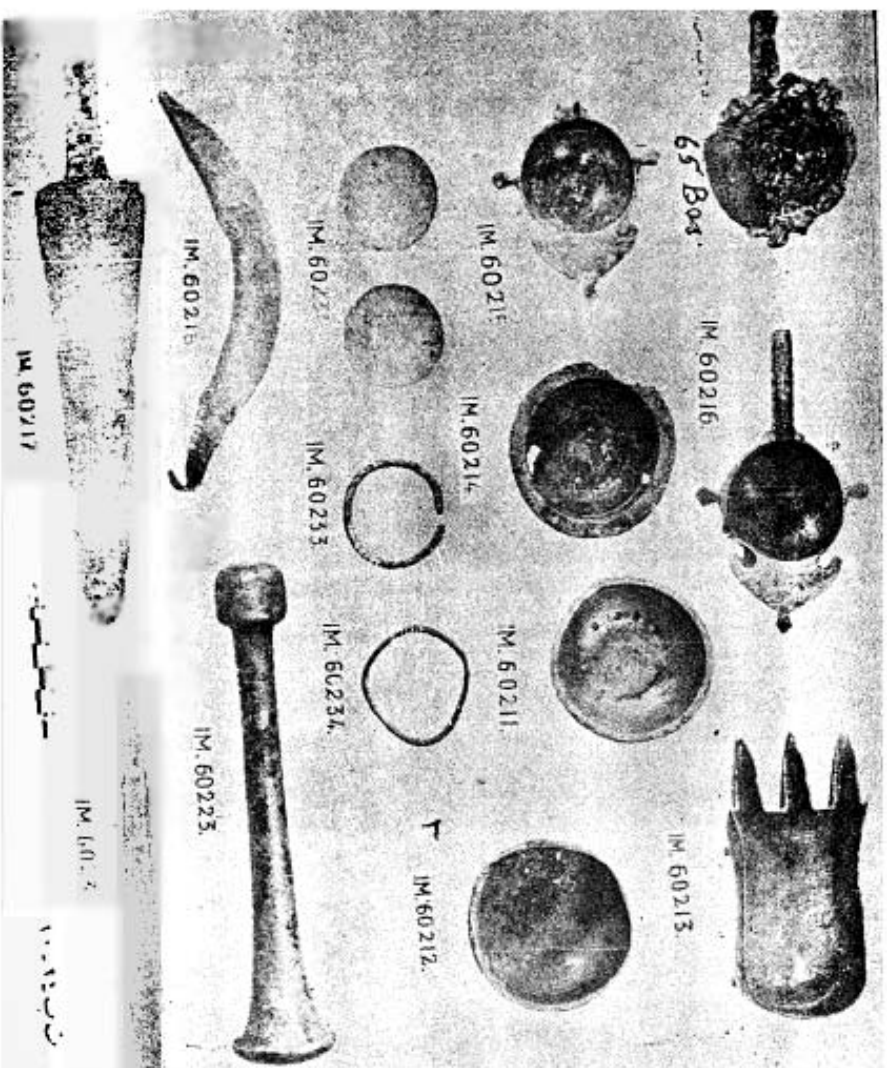




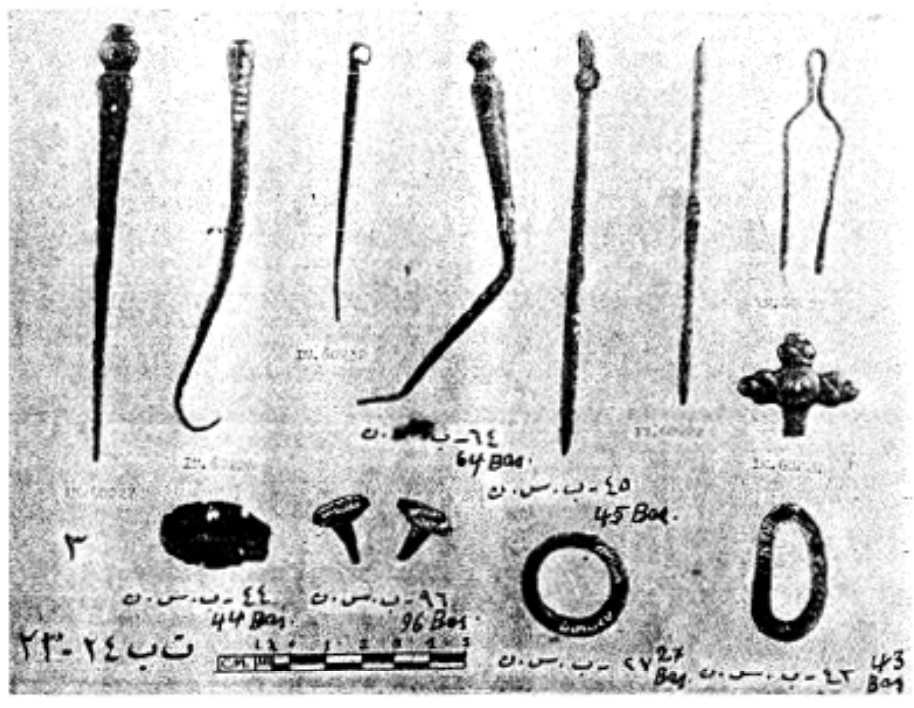


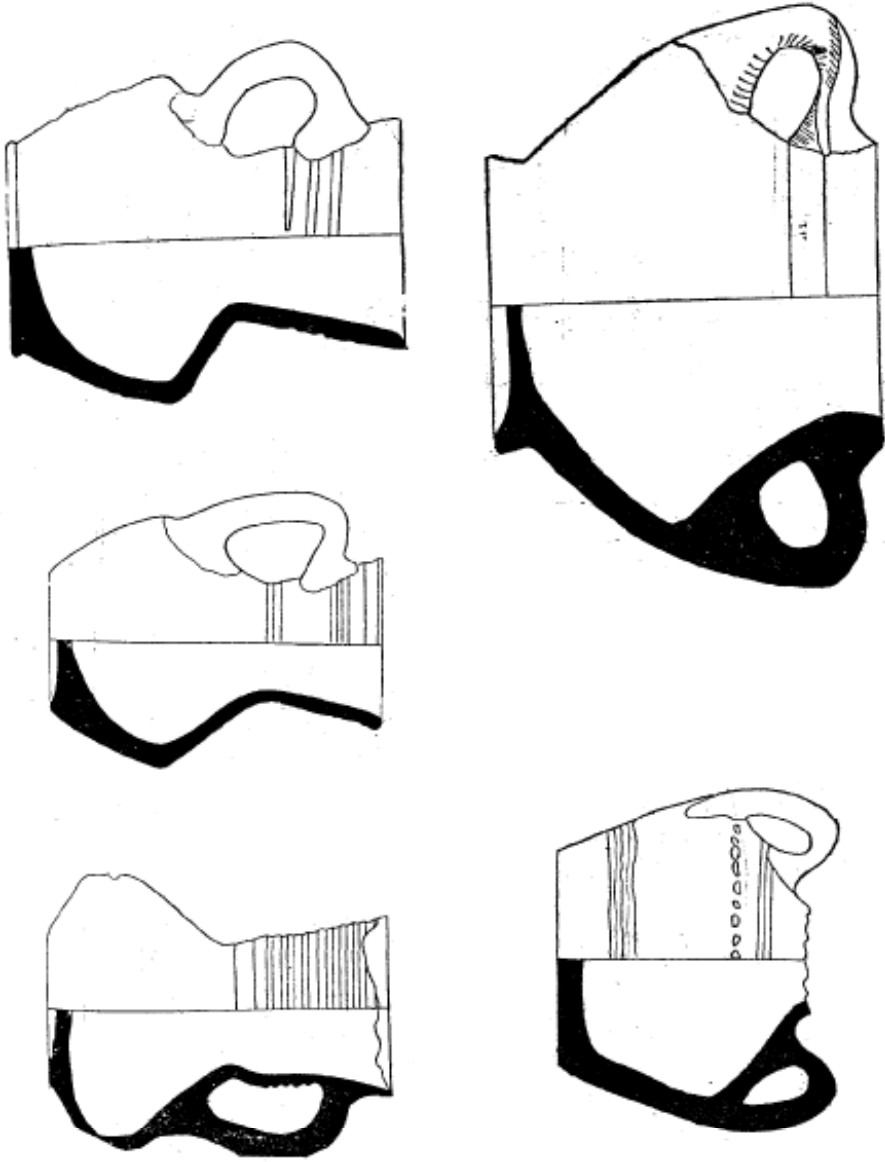


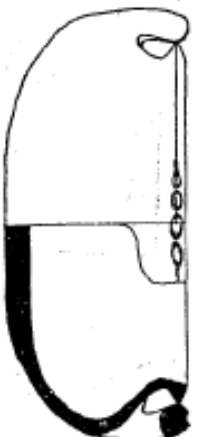
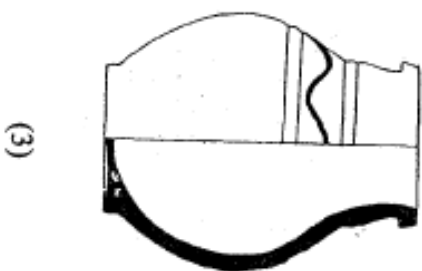
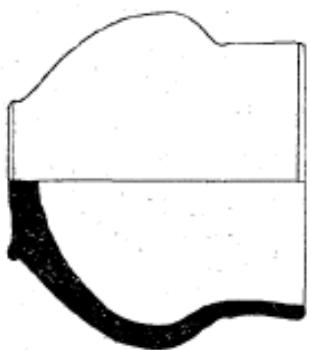
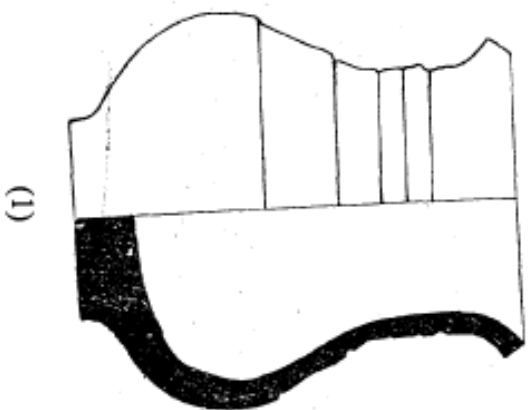


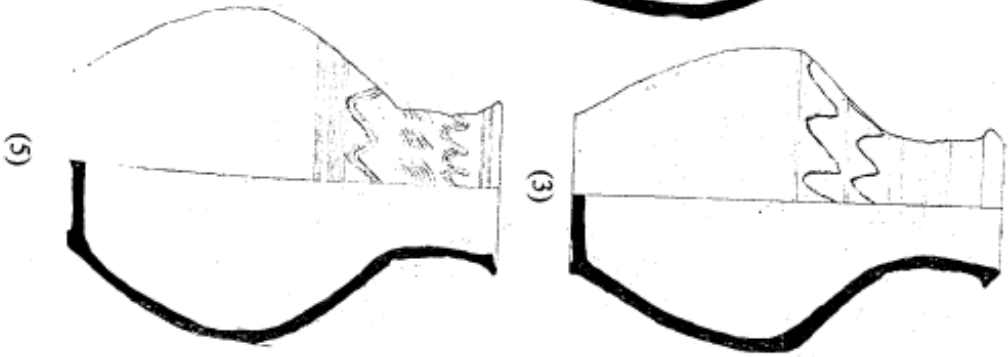
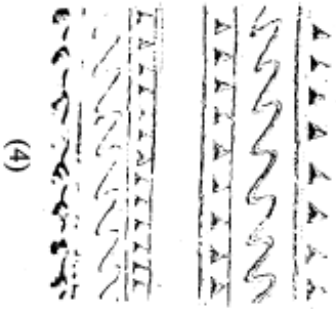
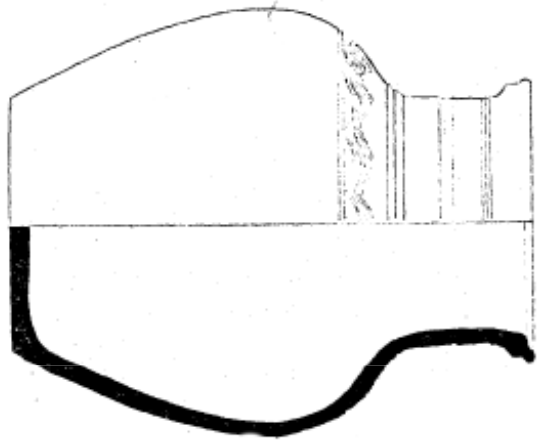
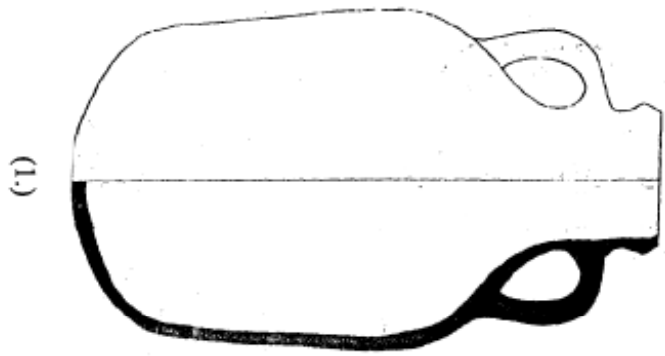


Pl. XXIII

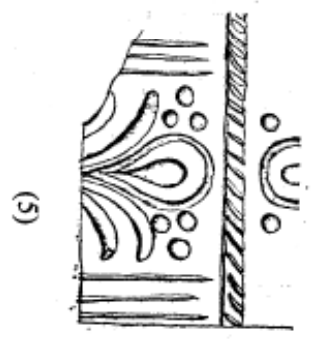
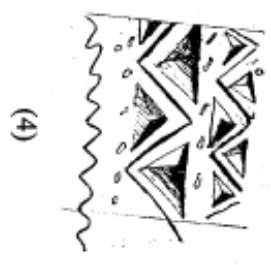
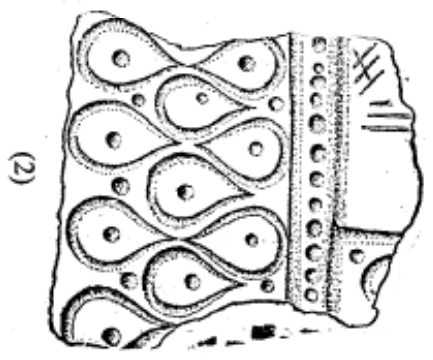
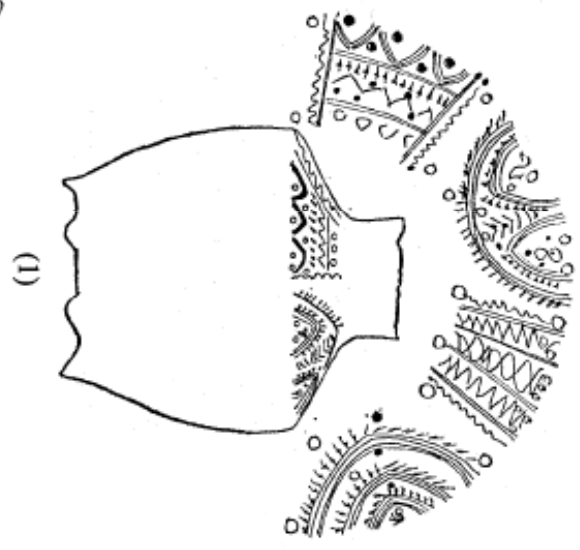


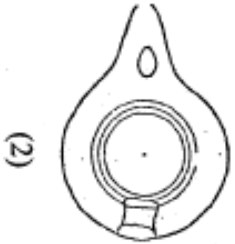
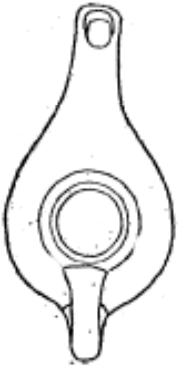
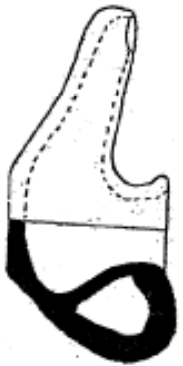
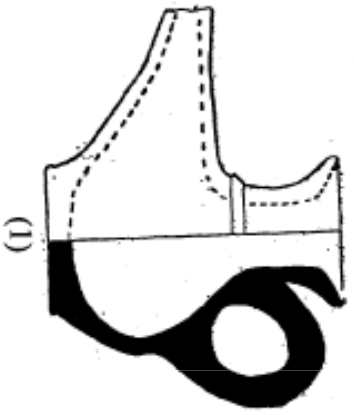




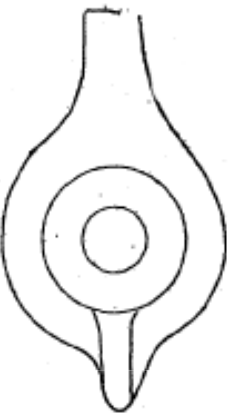


(5)





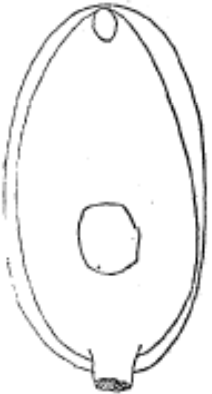
(2)



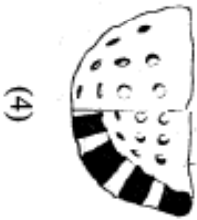
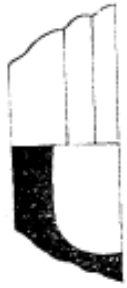
(3)



(5)



(6)



(1)

(2)

(4)

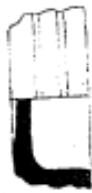


(5)

(6)

(7)

(8)



(9)

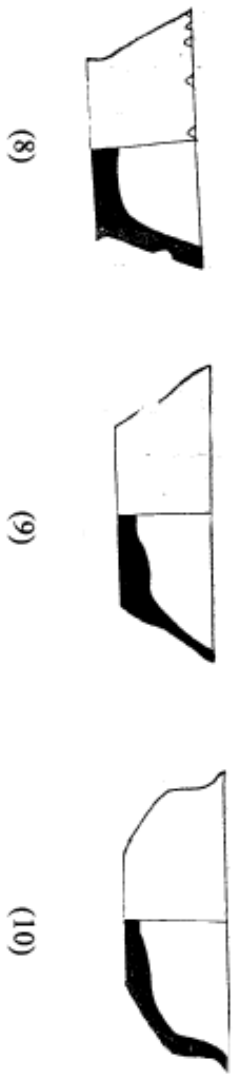
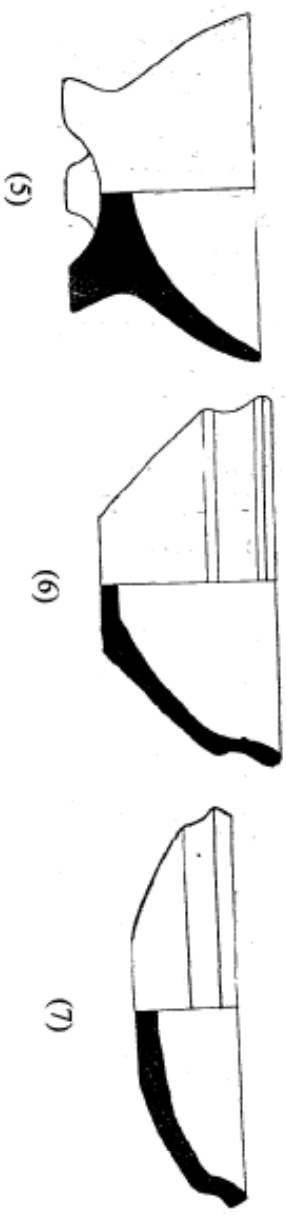
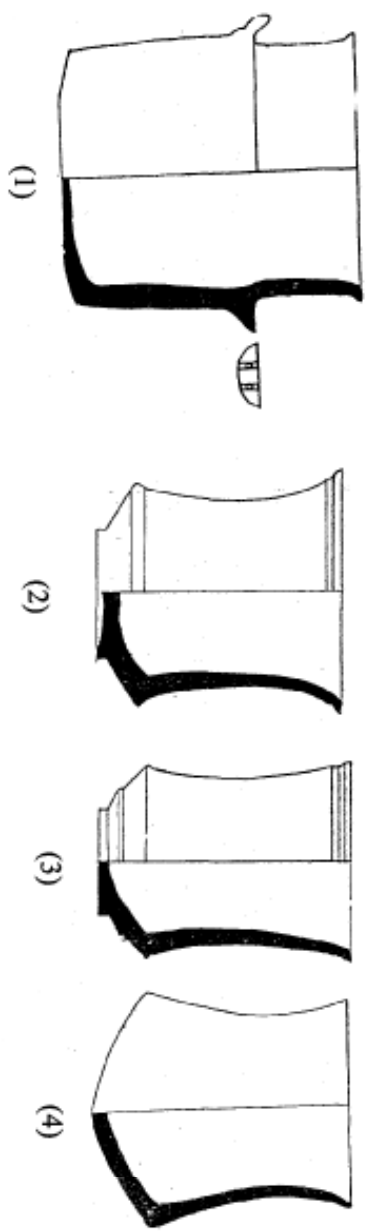
(10)

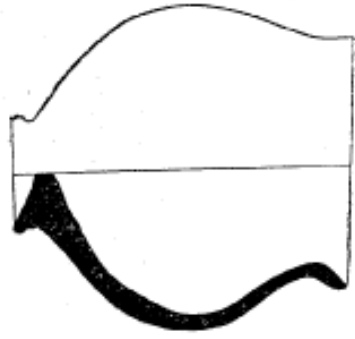
(11)

(12)

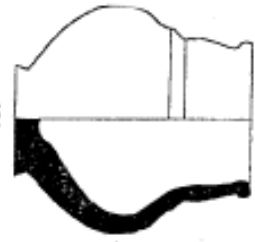


(13)





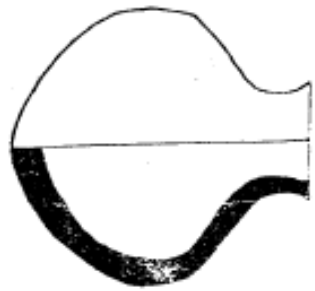
(1)



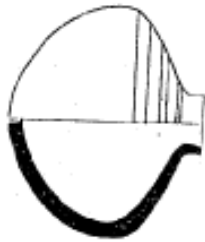
(2)



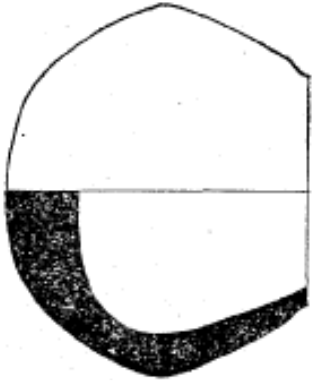
(3)



(4)



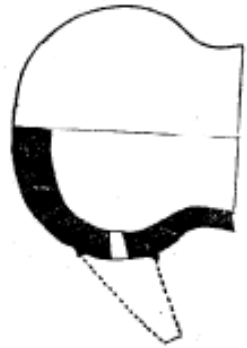
(5)



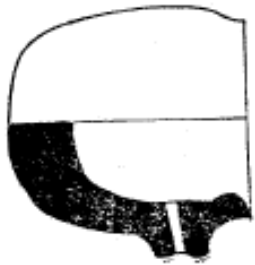
(6)



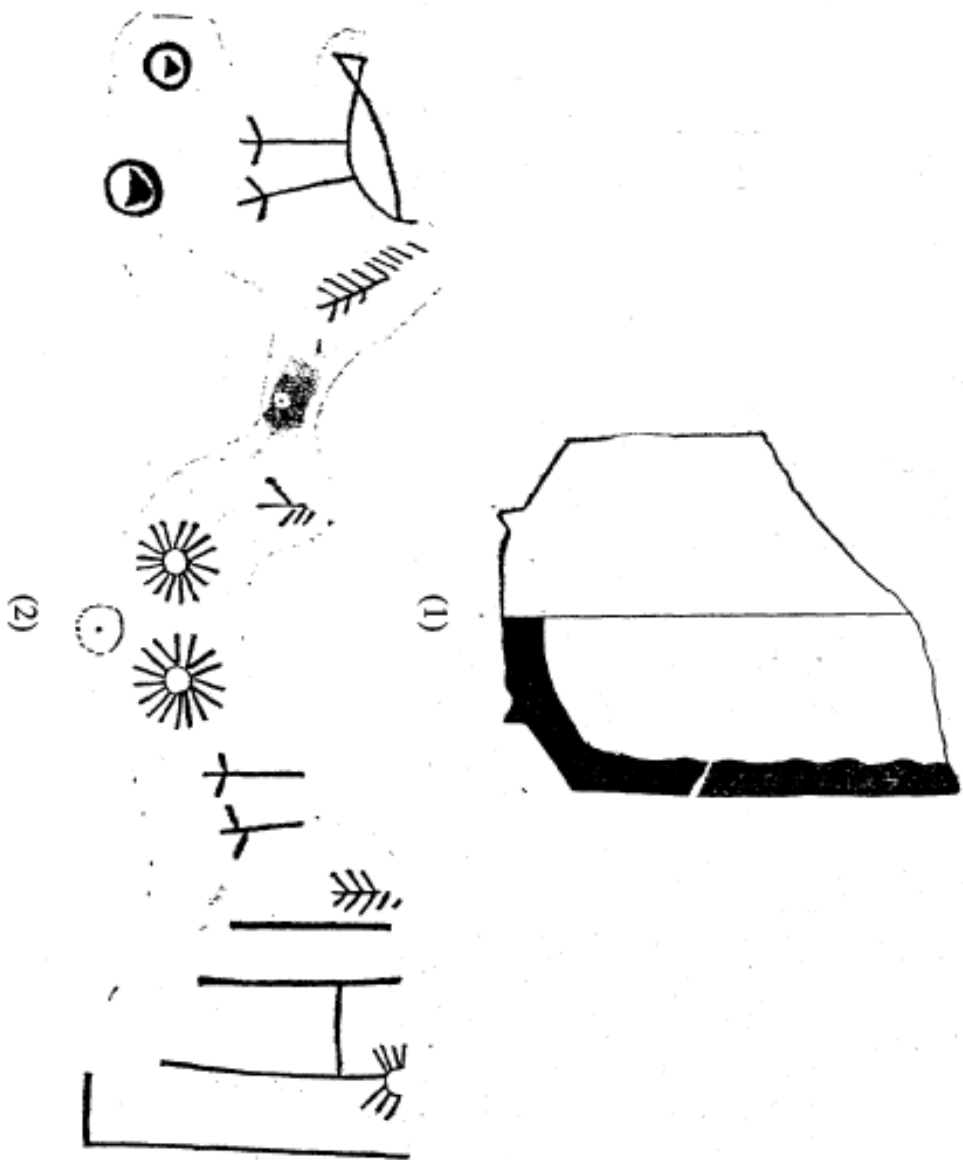
(7)

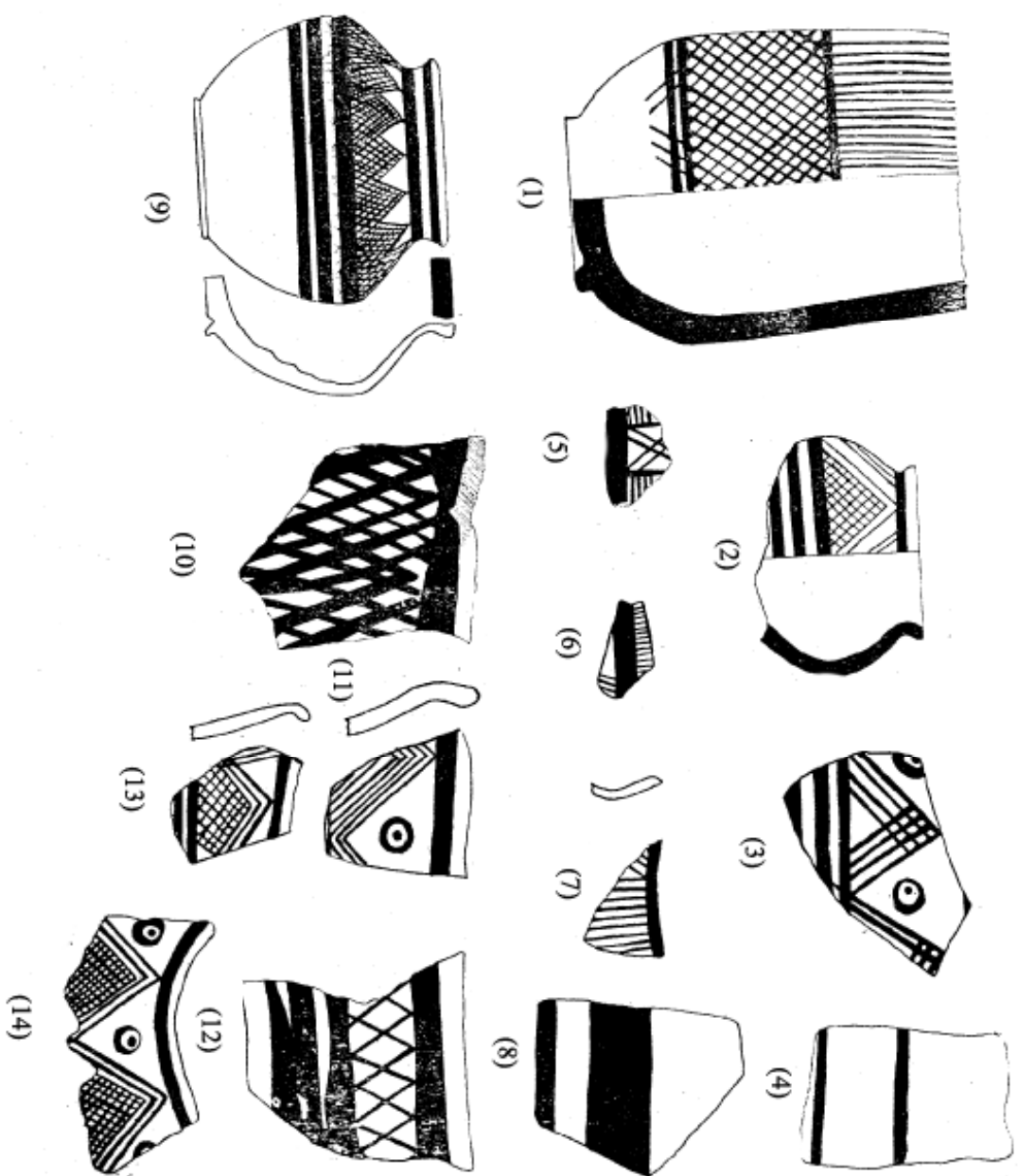


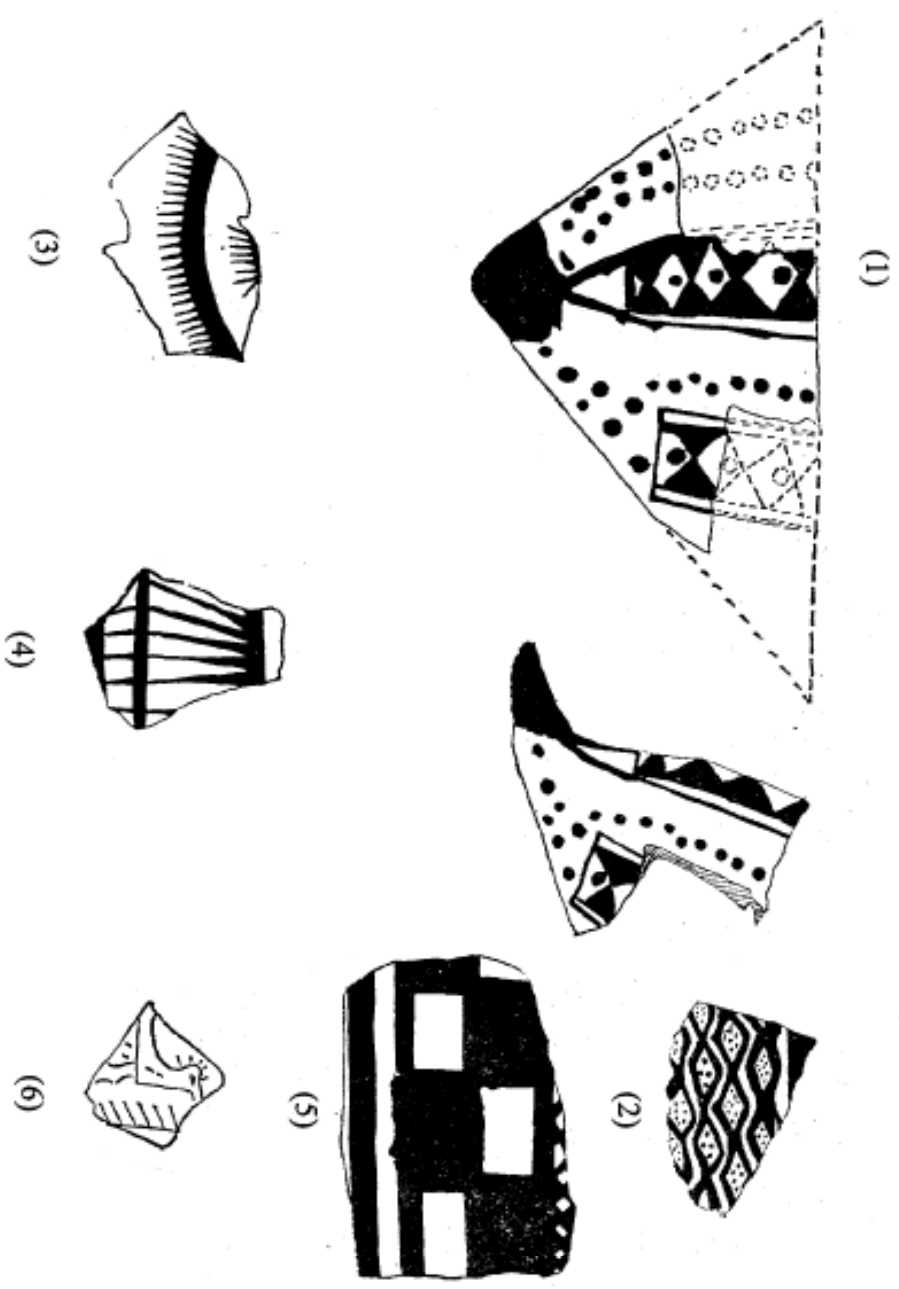
(8)

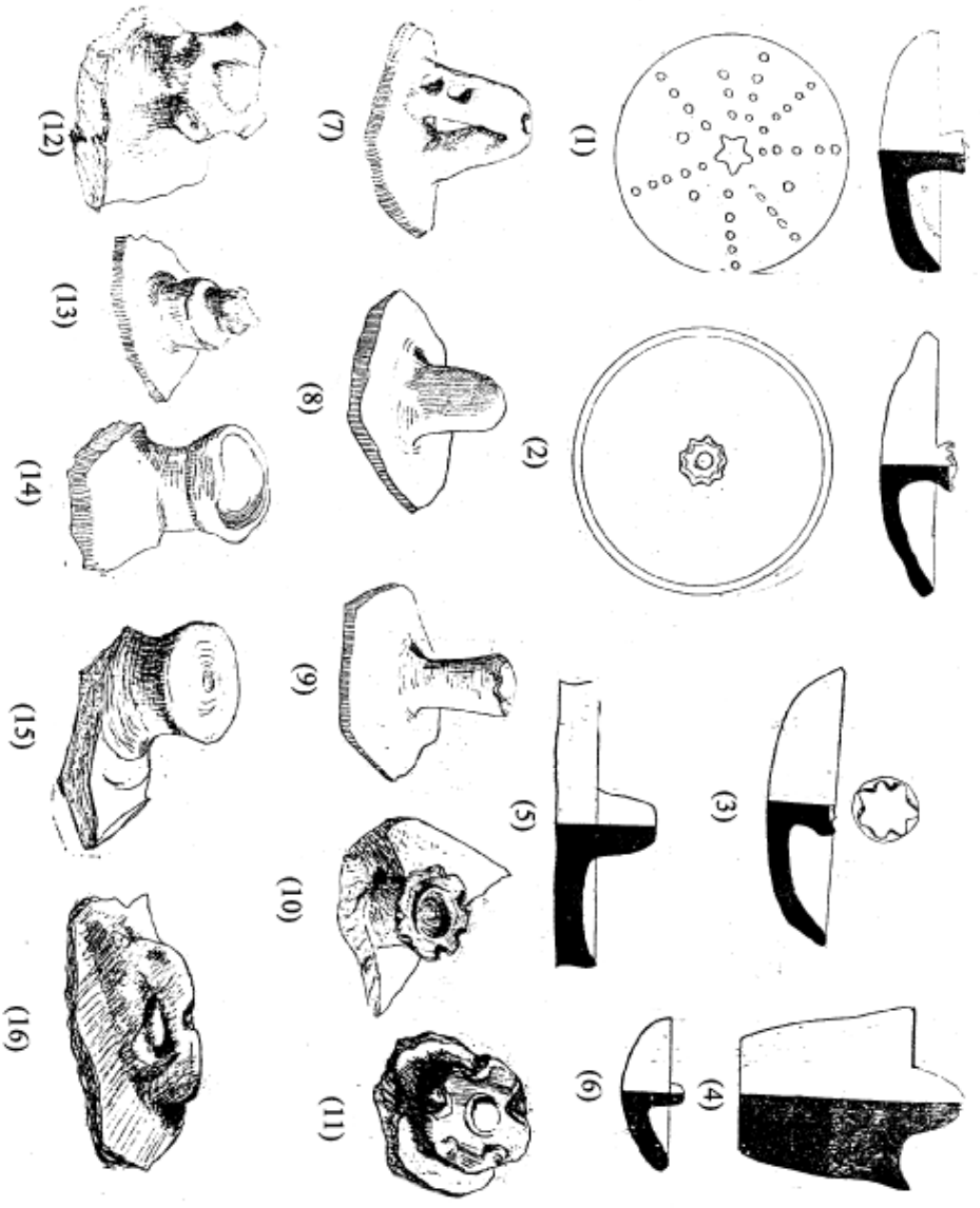


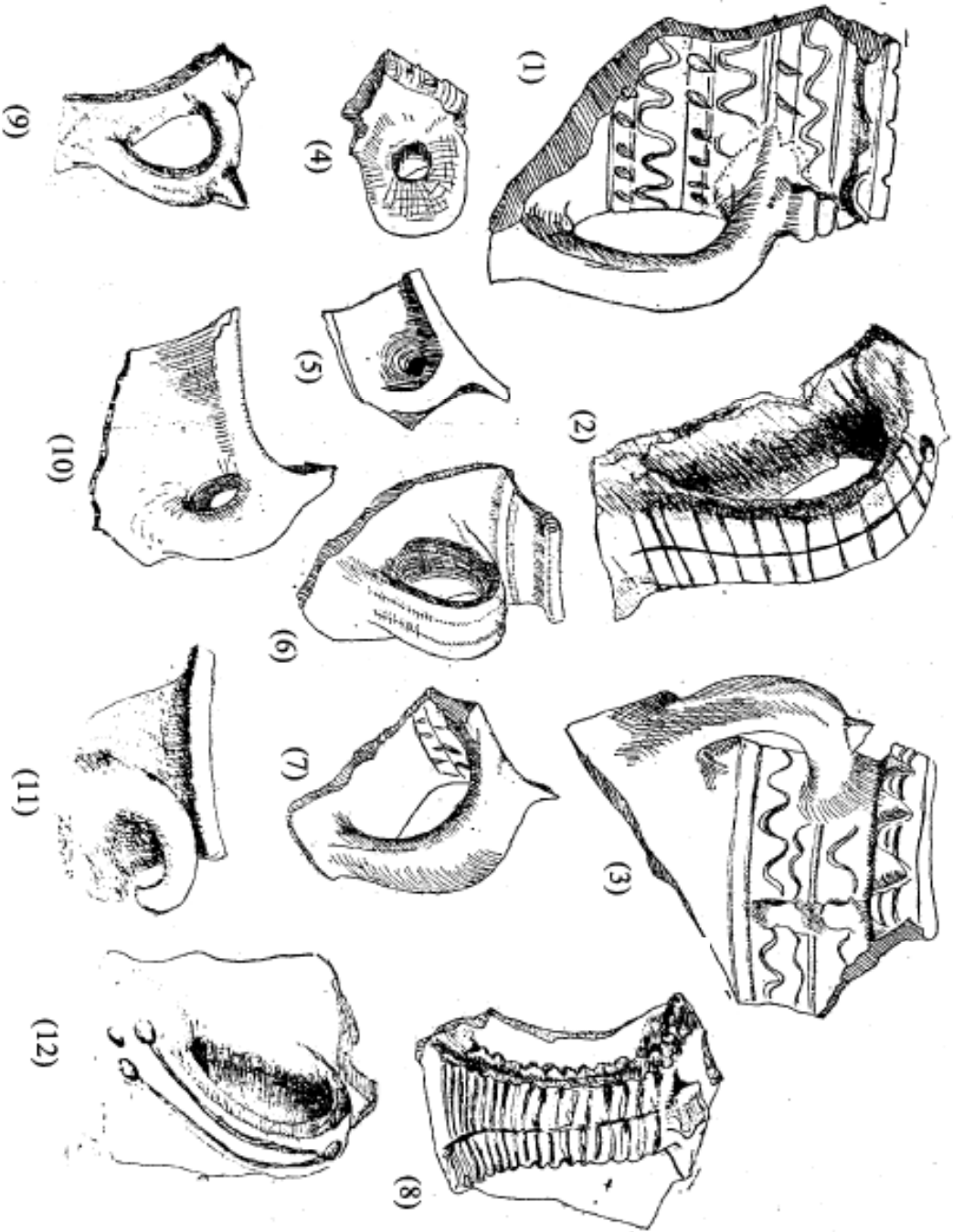
(9)





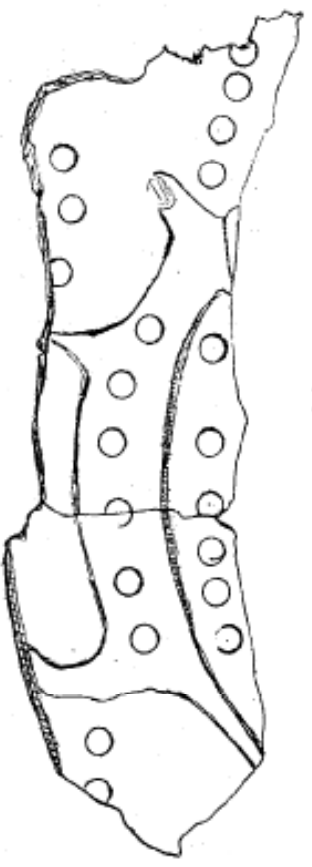








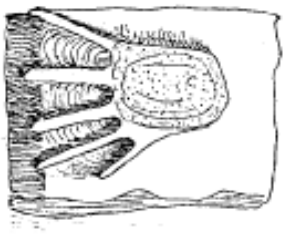
(1)



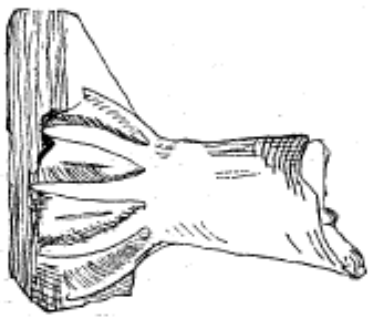
(2)



(3)



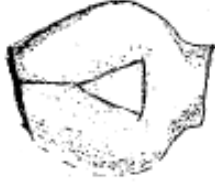
(4)



(5)



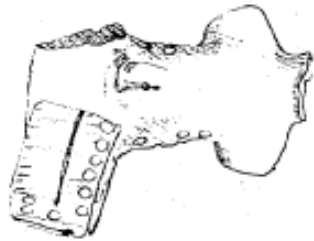
(1)



(2)



(3)



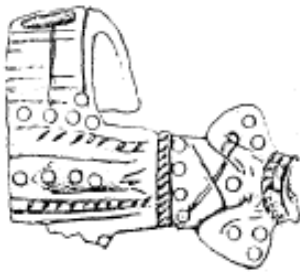
(4)



(5)



(6)



(7)



(8)



(9)



(10)



(11)



(12)

