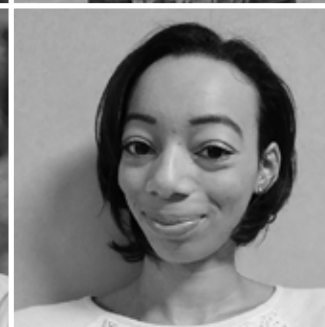
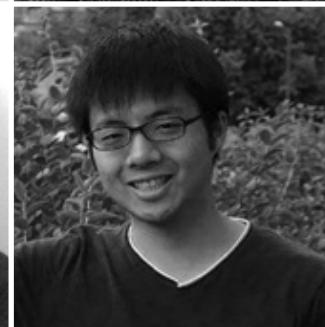
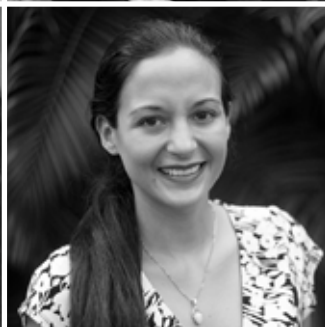
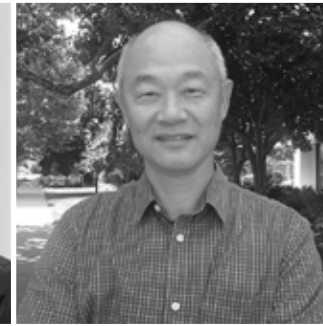


# New Faces at the PSTC

*Fall 2017*



# Faculty



## **Nina Joyce**

Investigator in Health Services, Policy and Practice, School of Public Health

Nina's research focuses on the association between the built environment, medical history, medication use, and traffic accidents in the elderly and on patterns of long-acting reversible contraception in adult women. She loves to cook and has nearly perfected her New York bagel recipe.



## **Laura López-Sanders**

Assistant Professor of Sociology

Laura's research examines the role of institutions and societal policies and practices in the patterning of inequality. She enjoys walks with a camera to work on improving her photography skills, running (mainly half marathons), and newly developed interests in gardening and sailing.



## **Don Operario**

Professor of Behavior and Social Sciences, School of Public Health

Don's research addresses the social psychological determinants of HIV, sexual health, and related health issues, as well as the lived experiences associated with social inequality. He likes dogs and cats, 70s/80s reruns, 90s indie bands, YouTube videos, and Kpop.



## **Louis Putterman**

Professor of Economics

Louis's recent research consists of studies of human interaction and studies of very long run determinants of comparative economic development. His hobbies include playing piano, travel, and reading books on history, psychology, evolutionary theory, neuroscience, and philosophy.



## **Bryce Steinberg**

Assistant Professor of Economics and International and Public Affairs

Bryce's work focuses on health and education in the developing world, particularly the effect of market forces and government programs on families' decisions to invest in human capital.

# Visiting Scholars



## **Terry-Ann Craigie**

Associate Professor of Economics, Connecticut College

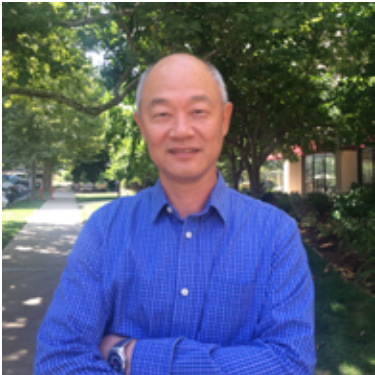
Terry-Ann has interests in mass incarceration, gender and racial inequality, family formation, and child wellbeing. While much of her work examines social and economic inequities as a whole, her current focus is on equity issues facing the U.S. correctional population, the majority of whom are young black males. She joins the PSTC while visiting the Data Science Initiative. She is a Michigan State Spartans fan and loves cooking Jamaican dishes.



## **Isaac Mbiti**

Assistant Professor of Public Policy and Economics,  
University of Virginia

Isaac's research focuses on African economic development with interests in examining the role of education policies such as free primary education and teacher performance pay programs, as well as the potential for new technologies (especially mobile phones) to spur the development process. He is a PSTC alumnus and enjoys traveling and eating.



## **Ming-Chang Tsai**

Research Fellow, Center for Asia-Pacific Area Studies, RCHSS,  
Academia Sinica, Taiwan

Ming-Chang's current research project concentrates on familial exchanges, gender equity and quality of life in the East Asian contexts. He loves food, travel, and talking with all kinds of people. During his visit until February 2018, he and his family are going to appreciate the beauty of historic Providence and New England.



# Postdoctoral Trainees



## Joseph Danko

Postdoctoral Research Associate in Population Studies and Spatial Structures in the Social Sciences (S4)

Joey specializes in utilizing GIScience to analyze socioeconomic issues in a spatial context, focusing particularly on those related to urban areas, demographic change, economic development, and real estate. He enjoys exercising outdoors, traveling, real estate, genealogy, New England sports teams, and spending time with his family.



## Daniel Schleith

Postdoctoral Research Associate in Population Studies and Spatial Structures in the Social Sciences (S4)

Daniel's research is classified as urban or transportation geography. It is focused on quantifying urban sprawl in order to identify strategies for making cities more accessible by modes of travel other than private automobiles. He enjoys board games, finding new places to eat, riding his bike, and spending time with his two dogs, Mulder and Macey.



## Eric Seymour

Postdoctoral Research Associate in Population Studies and Spatial Structures in the Social Sciences (S4)

Eric's work is broadly concerned with urban policy, real estate, and affordable housing, particularly in so-called shrinking cities. He is specifically interested in issues related to foreclosure, predatory real estate investment, and displacement pressures in declining cities. His personal interests include long-distance running and learning new Python libraries. He is also a hockey fan and looks forward to seeing the Providence Bruins play.



## Elyse Singer

Postdoctoral Fellow in Population Studies

Elyse is a qualitative medical anthropologist whose research centers on reproductive health, human rights, bioethics, gender, and citizenship, with a focus on Mexico City's historic 2007 abortion reform. She likes yoga, cooking, coffee shops, farmers markets, hiking, Frisbee, tag sales, furniture refurbishing, house decorating, and babies and children, if anyone needs childcare.



## Yun Zhou

Postdoctoral Research Associate in Population Studies

Yun's research interests focus primarily on family, fertility, gender, marriage, inequality, and stratification. Her current project explores the population consequences of ending the One Child Policy in China. She loves all things creative and literary: going to the ballet, visiting natural history and art museums, photography, and painting. When not running around looking for the perfect spot to take sunset photos, she draws punny comics inspired by statistical distributions.

# Predoctoral Trainees



**Hilary Barker**

Sociology

Hilary's research interests include sexual and reproductive health, family, and inequality. Her hobbies are creative writing, reading, hiking, and skiing.



**Courtney Choy**

Public Health

Courtney's research focuses on cardiometabolic non-communicable diseases, early childhood development, and Pacific Islander health, specifically in the Independent State of Samoa. She grew up in Hawaii, loves to knit, paddleboard, and cook with her crockpot.



**Teresa DeAtley**

Public Health

Teresa's research interests include domestic and international tobacco control policy, vulnerable populations, tobacco regulatory science, and advocacy. She enjoys running half marathons, hot vinyasa yoga, volunteering with BRYTE, and reading.



**Kira DiClemente**

Public Health

Kira's research focuses on reproductive health as it pertains to culture, tradition, and economic development. With an eye towards global health, she is interested in how family planning and female empowerment contribute to sustainable development. Kira loves all things seafood, practicing yoga, wandering art museums, and watching the Red Sox.



**Karolina Dos Santos**

Sociology

Karolina's research focus is on the sociology of migration. Specifically, her interests focus on migration and demography in the context of Latin America and the Caribbean. She enjoys traveling, learning new languages, and slamming pieces down at the domino table.



## **Shanelle Haile**

Sociology

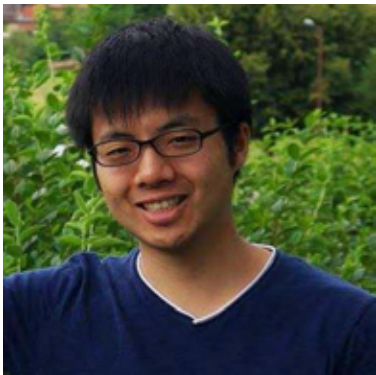
Shanelle's research interests are transnational migration, economic and social remittances, sustainable development, social mobility, sub-Saharan Africa and the African Diaspora. Her hobbies include film, photography, and Afro-literary fiction.



## **Fabiola Hernandez**

Anthropology

Fabiola's research interests lie in maternal healthcare disparities and the child birthing experiences among rural indigenous Cusqueñas in Peru, and how Quechua-speaking women communicate and interact with their reproductive healthcare providers. She grew up in a sleepy mission town in southern California known for celebrating the "return of the swallows" each year and attended her first concert (ever) last year to see the Korean pop group BTS.



## **Tate Kihara**

Sociology

Tate's research interests are on issues related to immigration, demography, and the United States. He was born in Kyoto, Japan, and loves eating, traveling, and watching American dramas.



## **Janet Lopez**

Economics

Janet's research focus is on development economics and applied microeconomics. Her interests center on issues of education, human capital, and gender, specifically, the way in which non-cognitive skills affect cognitive skills, performance in competition, and leadership on girls, and how that translates into labor market outcomes. She was born in Salta, Argentina, a beautiful place every season of the year. She loves to walk in the rain, and recently started taking photos, mainly landscapes, and enjoys practicing different techniques.



## **Erin Mellett**

Anthropology

Erin's research is on the Deaf culture and the American Deaf community. Specifically, she is interested in the experiences of deaf immigrants in the U.S. and in broader questions about what it means to be Deaf. She enjoys reading (especially science fiction/fantasy novels), being at the beach, and animals.





## **Adedotun Ogunbajo**

Public Health

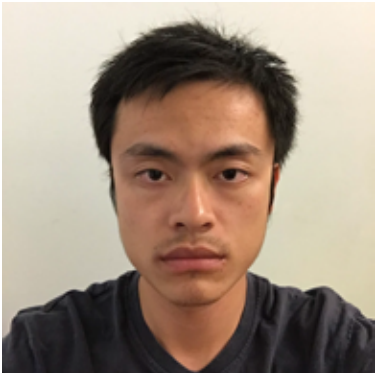
Adedotun's research interests are on issues related to health disparities and inequity, specifically HIV prevention and treatment, mental health, and substance use in racial and sexual minority communities both in the United States and across the African continent. He was born in Lagos, Nigeria, and enjoys baked goods, ice cream, and Thai food.



## **Madison Paulk**

Anthropology

Madison's research explores notions of belonging and identity re/formation of Congolese refugees in Durban, South Africa through lenses of transnational migration, gender, and urban violence. She enjoys volunteering at the International House of Rhode Island, kayaking, and visiting local micro-breweries.



## **Yifan Shen**

Sociology

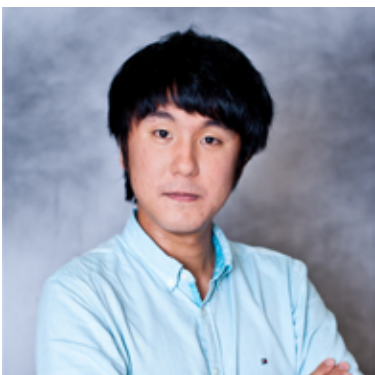
Yifan's research focuses on the relationship between mate selection and social inequality. He tries to understand why some people are better than others at entering into good romantic relationships and marriages, and examines the impact of marriage patterns on social inequality. He likes sitting in quiet parks, walking on beaches, cycling, and spending time with old friends.



## **Haoming Song**

Sociology

Haoming's current research focuses on the family transition process and its accompanying causes, manifestations, and implications. He is also interested in the newest tendencies in marriage and cohabitation, assortative mating patterns, and work-family conflicts, as well as the forming process of social inequality, with an emphasis on gender inequality. He enjoys listening to jazz and pop music, visiting museums and art exhibitions, and cooking for himself.



## **Shunsuke Tsuda**

Economics

Shunsuke's current research addresses the interlinkage between agricultural household behavior, market institutions, and conflicts in developing countries. He grew up in Nara, Japan, and likes traveling, baseball, and jazz music.

---

# Project Team

---



## **Caitlin Petruska-Mancinelli**

Caitlin works for the Equality of Opportunity Project to support their program growth and help launch new initiatives. She loves being outside in every season, cooking and traveling with her husband, and (most of what's involved in) puppy parenthood.



## **Ellen Viruleg**

Ellen works for the Equality of Opportunity Project, which studies American inequality and seeks to develop scalable policy solutions that empower families to rise out of poverty. She works alongside the PIs, overseeing the team's growth and expansion efforts. Her other full-time job involves repeatedly cleaning up the same toys and haranguing her three children to act like basic human beings.



---

# Student Assistants

---



## **Logan Casey**

Office Assistant

Logan is a first-year student from Atlanta, Georgia, and will be assisting in the front office. He is interested in applied math, economics, and languages, and plans to study abroad in South America. In high school, he ran track and cross country and edited his school's newspaper. He loves road trips and is an avid soccer fan.



## **Alexis Grant**

Training Program Aide

Alexis is a second-year ScM candidate at the School of Public Health. After assisting with the T32 grant application, she returns to the PSTC to support trainee programming and Center projects. In her spare time, she enjoys playing guitar, writing, and singing.