

SECTION 32 30 10 – SITE IMPROVEMENTS

PART 1 – GENERAL

1. Design Requirements:

- a. Trash and Recycling Receptacles:
 - 1) Design Intent: All receptacles to be placed in sets of three or more. Receptacles are labeled trash, mixed paper, and mixed containers. Install BigBelly in lieu of trash receptacle at heavy use areas as approved by Project Manager.
 - 2) Manufacturer: DuMor, Inc., P.O. Box 142, Mifflintown, PA 17059; 800-598-4018; www.dumor.com.
 - 3) Model: Model 63-985-32SH TR, Model 63-985-32SH MP, Model 63-5-32SH MC, all with domed cover. Dimensions: 32 gallon, all-steel.
 - 4) Mounting: To be set on cobble base; see typical installation sketch included in this section.
 - 5) Alternate Receptacle (Big Belly)
 - a. Manufacturer: Big Belly Solar, 85 Wells Avenue, Newton, MA 02459; www.bigbellysolar.com.
 - b. Model: BigBelly Single Station - WS-BB-SGL-5YR, with Message panel MSG PANEL.
 - c. Mounting: Similar to DuMor.
- b. Benches:
 - 1) Design Intent: Wood and metal benches are to be used in traditional setting as determined by Project Manager. There is no design standard in non-traditional settings.
 - 2) Manufacturer: DuMor, Inc., P.O. Box 142, Mifflintown, PA 17059; 800-598-4018; www.dumor.com.
 - 3) Model: 6'-long Ipe Bench 57-60I.
 - 4) Mounting: To be set on cobble base; see typical installation sketch included in this section.
- c. Bike Racks:
 - 1) Design Intent: Minimum of 3 hoops per installation.
 - 2) Manufacturer: Dero Bike Racks, Inc. 2657 32nd Avenue S, Minneapolis, MN 55406; 888-337-6729; www.dero.com.
 - 3) Model: Custom-sized Dero Surface Mounted Hoop Rack.
 - 4) Mounting: To be set on cobble base; see typical installation sketch included in this section.
- d. Bollards:
 - 1) Permanent bollards are to be made of granite.
 - 2) Removable bollards- Manufacturer: Mid-Atlantic Products, Inc., 7328 Church Hill Road, Chestertown, MD 21620, 410-778-1110.

- 3) Model: DG 4, Removable/Lockable, dimensions per drawing; standard color: powder-coated aluminum.

- e. Emergency Telephones:
 - 1) Locate as directed by Project Manager. Coordinate location with DPS and CIS.
 - 2) Manufacturer: Ramtel, 115 Railroad Avenue, Johnston, RI 02919, 401-231-3340.
 - 3) Model: PLC-8 11" Square, 1" Radius Corners.
 - 4) Installation: Wire phone for future security camera. For camera specification, see security section.
- f. Screening Fencing:
 - 1) Design Intent: To be used to screen mechanical equipment, trash dumpsters, and other unsightly areas. Screening method may vary depending on context.
 - 2) Wooden fence stained to blend with surrounding context. Screening fence should be planted with loosely spaced shrubs and/or small trees in order to de-emphasize the fencing by partially screening it.
 - 3) Manufacturer: Walpole Woodworkers, 1350-A Bald Hill Road, Warwick, RI 02886; 401-823-7091; www.walpolewoodworkers.com
 - 4) Model: "Essex" style fence. See detail in Part 4 of this section.
- g. Cigarette Ash Receptacle:
 - 1) Manufacturer: Forms + Surfaces; www.forms-surfaces.com
 - 2) Model: "Butler Ash Receptacle", standard black color.
 - 3) Mounting: Pole or wall mount.

“



RECEPTACLE CUT SHEET TYPE "MP"

SPUN DOME CORER W/ SLOT BOLTED TO CENTER PLATE

SOURCED QRM LATCH

LATCH

2" X 15" SLOT

4 1/2" O.D. X 1/2" W SIL TUBE 1/2" LONG

TOP & BOTTOM RINGS 3/8" THK SIL PLATE

3/8" X 1" SIL HEX HD CAP SCREW W/ SIL FLAT WASHERS & SIL HEX NUT

3/8" THK CENTER PLATE

3/8" SIL BAR

1 1/2" X 1" SIL VERTICAL POCKETS

32 GAL PLASTIC LINER

18 GA SIL INTERIOR LINER

1/4" X 2" SIL BAR

2" X 2" X 1/4" SIL ANGLE ANCHOR PINS (3 PLACES)

23 3/8"

27 1/2"

4 9/16"

4 1/2"

4"

37"

PLASMA CUT LETTERING ON 18 GA X 4" SIL STOP (2 PLACES)

MIXED

7/8" O.D. COLLAR W/ PRESTRESS BRASSING

DOOR RING

3/8" X 2 1/2" S. SIL HEX HD CAP SCR (FIBER)

WASHER

WASHER

END OF BOLT FIBERED

CENTER RING DRILLED & TAPPED

HINGE DETAIL

COLOR OPTIONS: POWDERCOAT

☒ BLACK ☐ HUNTER GREEN

☐ BRONZE ☐ DEEP RED

☐ BLUE ☐ GREEN

☐ OTHER _____

NOTES

1.) ALL STL MEMBERS COATED W/ ZINC RICH EPOXY THEN FINISHED W/ POLYESTER POWDER COATING (SEE COLOR OPTIONS)

2.) 1/2" X 3 3/4" PLT'D EXPANSION ANCHOR BOLTS PROVIDED.

3.) 32 GAL PLASTIC LINER PROVIDED.

4.) STL SHEET BEHIND PLASMA CUT LETTERING W/ CONTRASTING COLOR. LETTERING TO READ: "MIXED PAPER"

5.) SIDE OF RECEPTACLE HINGES FOR ACCESS TO LINER

6.) UNIT WILL BE SHIPPED WITH SIDE DOOR ATTACHED.

DATE DRAWN : 12/12/00

TITLE

RECEPTACLE

DRAWN BY : AVH

REVISION A

DRAWING NUMBER

63-985-MP

DATE REV. :

REV. BY :

MODIFIED LATCH REPLACE OLD #62-936-GMP

DuMor, inc.

P.O. Box 142 Middletown, PA 17059-0142

SWAN DOME COVER
W/ 4 1/2" DIA. HOLE
BACKED TO CENTER PLANE

SOUTHWEST CAM LATCH

LATCH

28"
4 1/2" DIA.
4 1/2" O.D. X 1/2" W
STL TUBE 1/2" LONG
4 9/16"
4 1/2"
4"

TOP & BOTTOM RINGS
3/8" THK STL PLATE
3/8" X 1" S.SIL. HEX HD CAP
SCREW W/ S.SIL. FLAT WASHERS
& S.SIL. HEX NUT
3/8" THK CENTER PLATE
3/8" STL STL BAR

1/2" X 1" STL
VERTICAL PICKETS
32 GAL. PLASTIC
LINER
18 GAL. STL
INTERIOR LINER
1/4" X 2" STL BAR
2" X 2" X 1/4" STL ANGLE
ANCHOR PINS (3 PLACES)

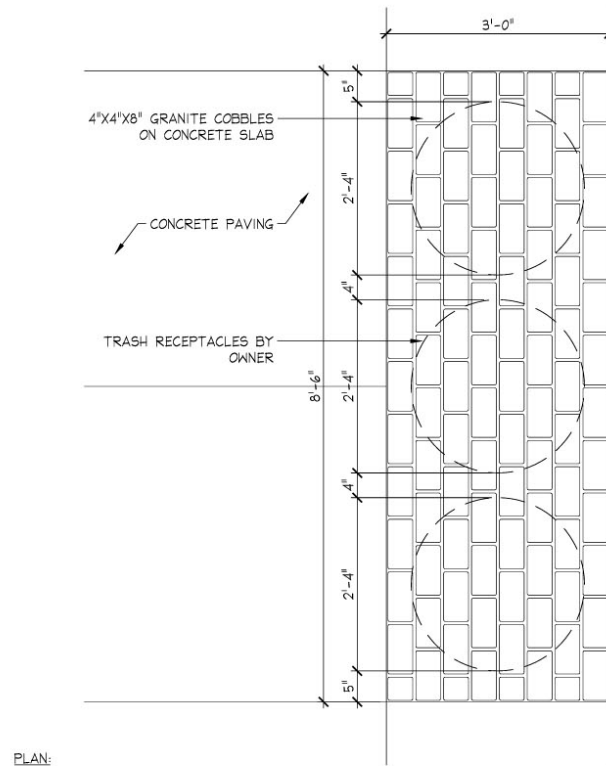
PLASMA CUT
LETTERING ON
18 GAL. X 4"
STL SHEET
(2 PLACES)

37"
23 3/8"
27 1/2"

HINGE DETAIL
HINGE
3/8" X 2 1/2"
S.SIL. HEX HD
CAP SCREW (PRED)
WASHER
DOOR
RING
7/8" O.D.
COLLAR W/
PRESS
ONLINE
BUSHING
WASHER
END OF BOLT
PREPARED
CONCRETE RING
DRILLED & TAPPED

NOTES
1.) ALL STL. MEMBERS COATED W/ ZINC RICH
EPOXY THEN FINISHED W/ POLYESTER
POWDER COATING (SEE COLOR OPTIONS)
2.) 1/2" X 3 3/4" PLTD EXPANSION
ANCHOR BOLTS PROVIDED.
3.) 32 GAL. PLASTIC LINER PROVIDED.
4.) STL SHEET BEHIND PLASMA CUT
LETTERING W/ CONTRASTING COLOR.
5.) SIDE OF RECEPTACLE HINGES FOR
ACCESS TO LINER
6.) UNIT WILL BE SHIPPED WITH
SIDE DOOR ATTACHED.

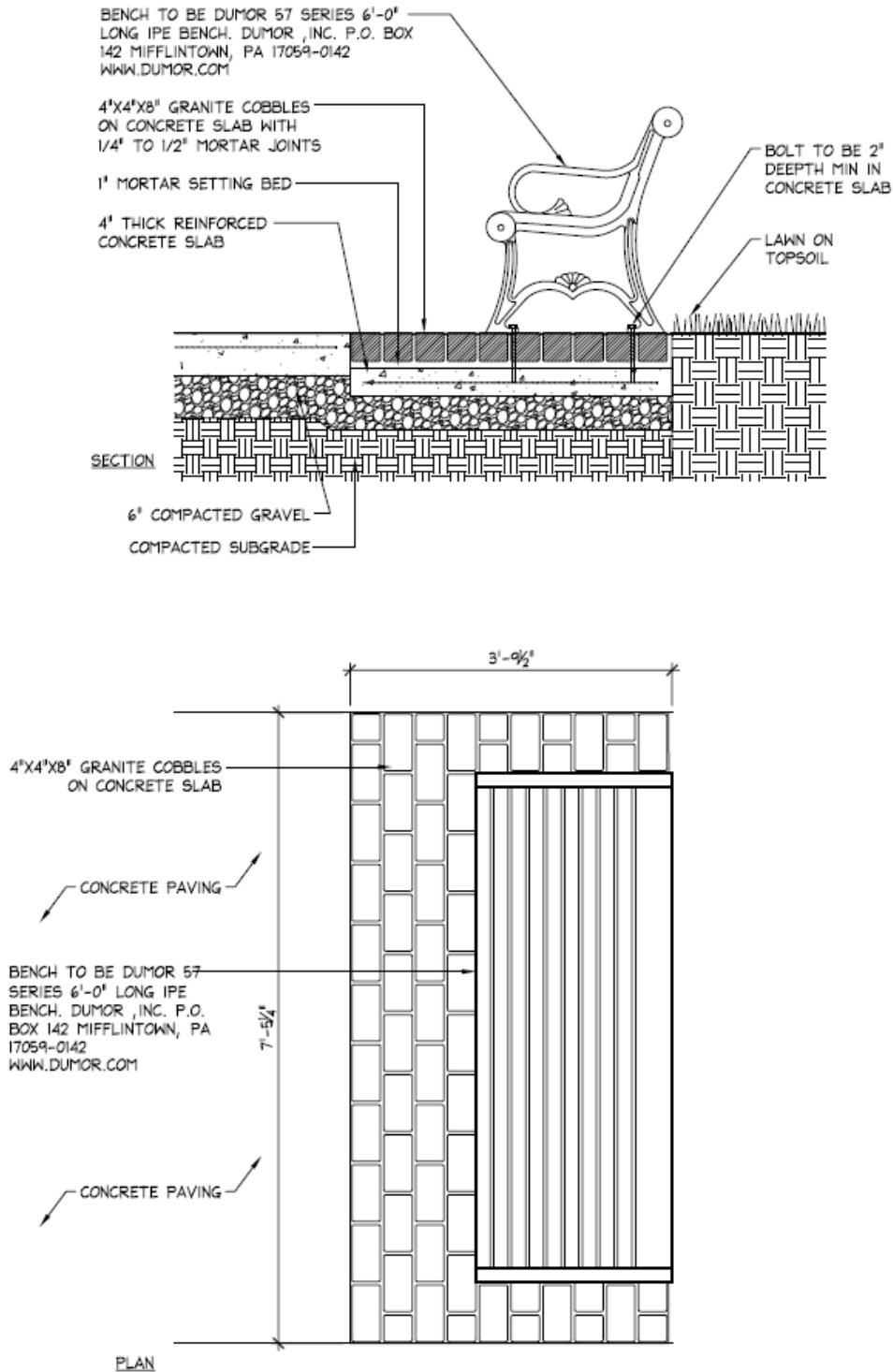
COLOR OPTIONS: POWDER COAT
☒ BLACK ☐ HUNTER GREEN
☐ BRONZE ☐ DEEP RED
☐ BLUE ☐ GREEN
☐ OTHER



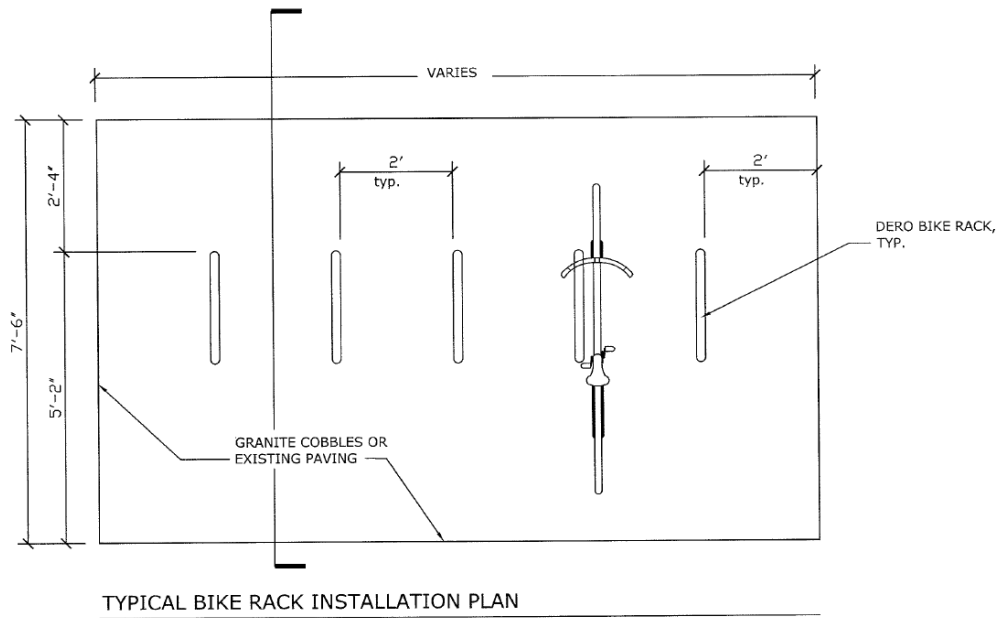
TRADITIONAL BENCH CUT SHEET

<p><u>LENGTH OPTIONS</u></p> <p><input type="checkbox"/> 6' BENCH</p> <p><input type="checkbox"/> 8' BENCH</p>																									
<p><input type="checkbox"/> CUSTOM LETTERING (37 SPACES) _____</p>																									
<p><u>NOTES</u></p>																									
<p>1.) ALL STL. MEMBERS COATED W/ ZINC RICH EPOXY THEN FINISHED W/ POLYESTER POWDER COATING.</p> <p>2.) ALL WOOD MEMBERS TREATED W/ CLEAR PRESERVATIVE.</p> <p>3.) 1/2" X 3 3/4" EXPANSION ANCHOR BOLTS PROVIDED.</p> <p>4.) CUSTOM LETTERING AVAILABLE FOR RECESSED SIDE PANELS (TOTAL OF 37 SPACES).</p>	<p><u>WOOD OPTIONS</u></p> <p><input type="checkbox"/> CLEAR ALL HEART REDWOOD S4S EE</p> <p><input type="checkbox"/> 'C' & BTR. DOUGLAS FIR KD S4S EE</p> <p><input type="checkbox"/> CLEAR WESTERN RED CEDAR S4S EE</p> <p><input type="checkbox"/> OTHER _____</p>																								
<p>P.O. Box 142 Mifflintown, PA 17059-0142</p>	<table border="1"> <tr> <td colspan="2">SCALE : NONE</td> <td colspan="2">TITLE : BENCH</td> </tr> <tr> <td colspan="2">DATE DRAWN : 3/22/94</td> <td colspan="2"></td> </tr> <tr> <td colspan="2">DRAWN BY : AH</td> <td colspan="2"></td> </tr> <tr> <td colspan="2">DATE REV. : 11/7/99</td> <td colspan="2"></td> </tr> <tr> <td colspan="2">REV. BY : JSB</td> <td colspan="2"></td> </tr> <tr> <td>REV. F</td> <td>DRAWING NUMBER 57 SERIES</td> <td colspan="2">SHEET 1 OF 2</td> </tr> </table>	SCALE : NONE		TITLE : BENCH		DATE DRAWN : 3/22/94				DRAWN BY : AH				DATE REV. : 11/7/99				REV. BY : JSB				REV. F	DRAWING NUMBER 57 SERIES	SHEET 1 OF 2	
SCALE : NONE		TITLE : BENCH																							
DATE DRAWN : 3/22/94																									
DRAWN BY : AH																									
DATE REV. : 11/7/99																									
REV. BY : JSB																									
REV. F	DRAWING NUMBER 57 SERIES	SHEET 1 OF 2																							

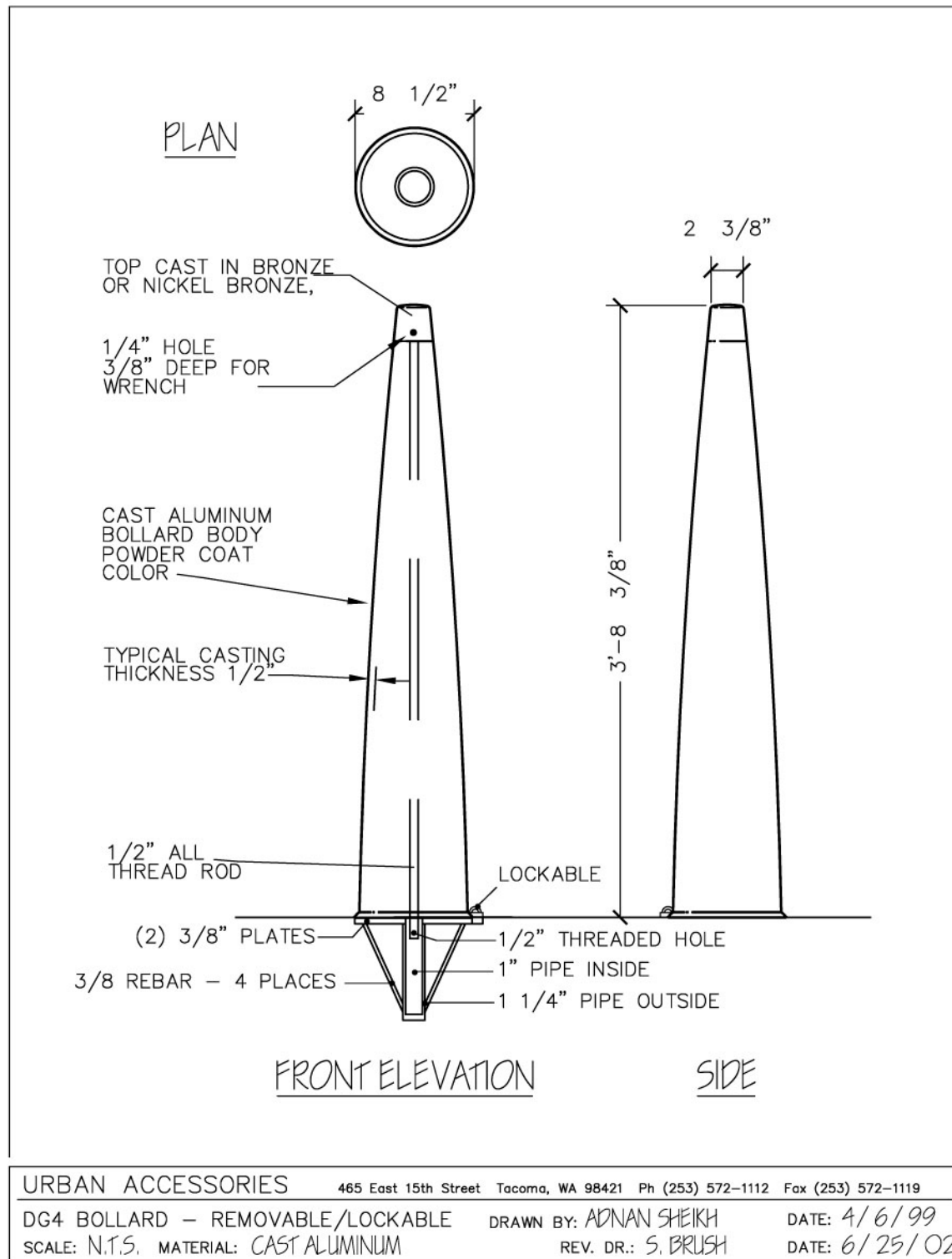
TRADITIONAL BENCH INSTALLATION DETAIL



BIKE RACK INSTALLATION DETAIL



REMOVEABLE BOLLARD CUT SHEET



EMERGENCY TELEPHONE CUT SHEET



115 RAILROAD AVENUE
JOHNSTON, RI 02919
401-231-3340

FREE STANDING UNITS
RAMTEL COLUMNS are Fabricated in
STAINLESS STEEL A Lifetime Investment

Designs fit into both Traditional and Contemporary surroundings.
The Engineering Design cannot be compared.

itta

100over
10-22-07
1600-1200



PLC-8
11" Square
1" Radius Corners



PLC-9D
11" Square - Directory
1" Radius Corners



PLC-7
13" Triangle



PLC-9
10" Square
1" Radius Corners



PLC-10
11" Square
4" Radius Corners

Phones are purchase separately.

Options:

Built-in Heater, Cellular, Solar, Camera Bracket, Covert Camera, Clear LEXAN door

Finish:

Powder Coated - Standard Colors
Black, Charcoal Gray, Neutral Gray, Midnight Blue, Parade Blue,
Architect Brown, Forest Green, Safety Red, Safety Yellow, White.

Optional:

Custom Powder Coat Colors
Natural Stainless - Glass Bead Finish

Labels:

Standard and Custom - EMERGENCY, COURTESY PHONE, ASSISTANCE,
INFORMATION, HELP PHONE

Label Colors:

Standard and Custom White, Blue, Black, Maroon

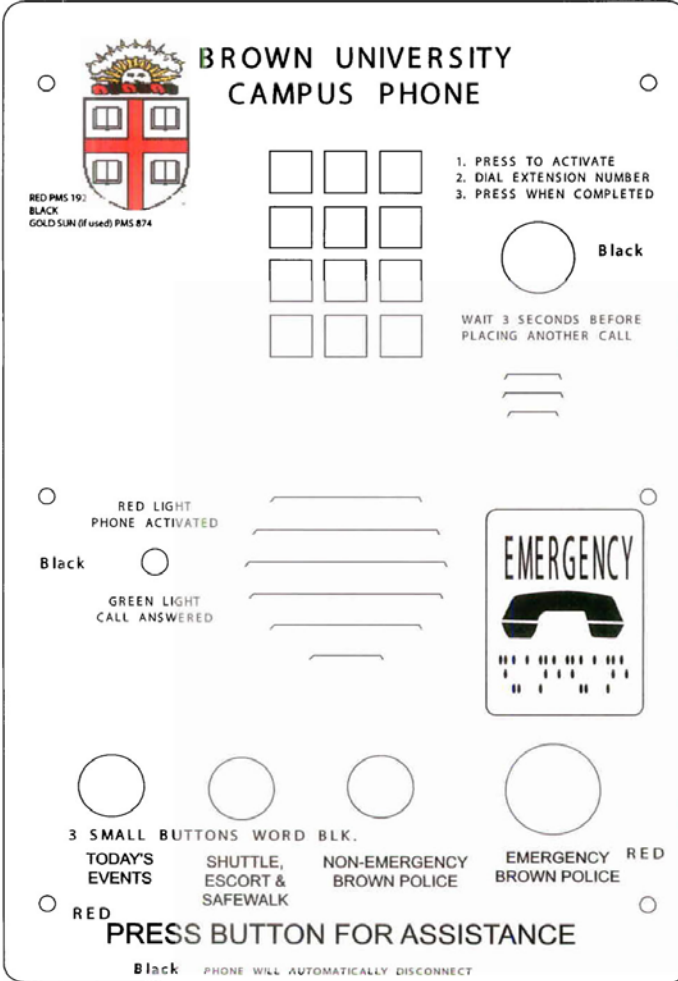


Lamp Post Option

ARCHITECT VERIFY OPTIONS.

6/05

EMERGENCY TELEPHONE CUT SHEET AND PHOTO
#2007



**BROWN UNIVERSITY
CAMPUS PHONE**

RED PMS 19:
BLACK
GOLD SUN (if used) PMS 874

1. PRESS TO ACTIVATE
2. DIAL EXTENSION NUMBER
3. PRESS WHEN COMPLETED

Black

WAIT 3 SECONDS BEFORE
PLACING ANOTHER CALL

RED LIGHT
PHONE ACTIVATED

Black

GREEN LIGHT
CALL ANSWERED

EMERGENCY

3 SMALL BUTTONS WORD BLK.

TODAY'S
EVENTS

SHUTTLE,
ESCORT &
SAFEWALK

NON-EMERGENCY
BROWN POLICE

EMERGENCY BROWN POLICE

RED

RED
PRESS BUTTON FOR ASSISTANCE

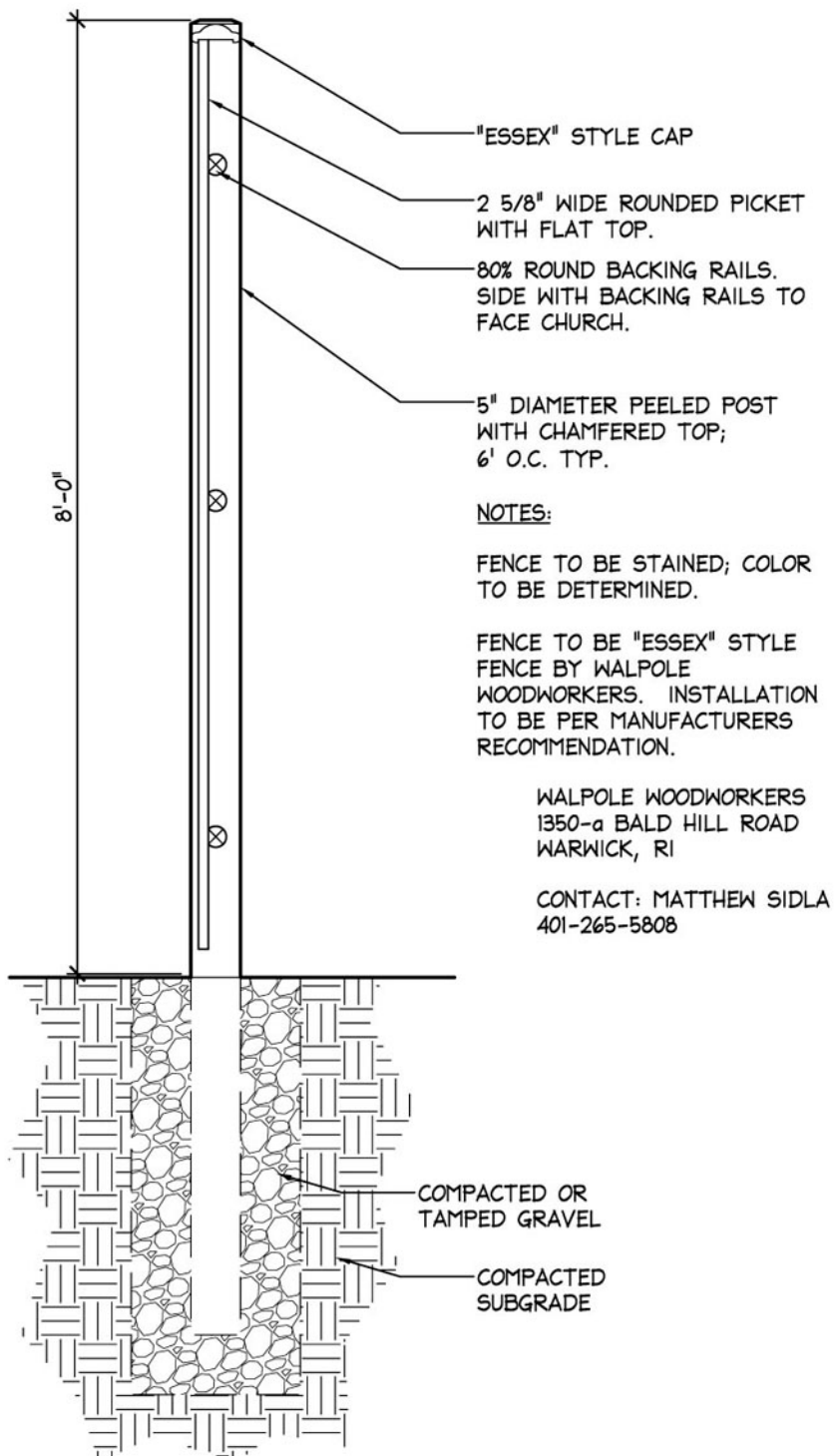
Black PHONE WILL AUTOMATICALLY DISCONNECT



RR734/3 EXISTING LAYOUT



SCREENING FENCE DETAIL



ASH RECEPTACLE CUT SHEET



BUTTLER® ASH RECEPTACLE



PRODUCT DATA

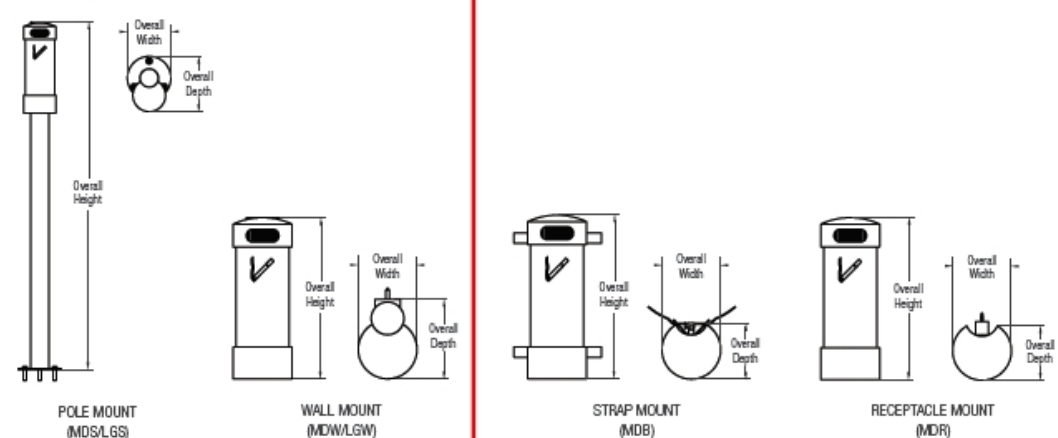
Buttler Ash Receptacles acknowledge society's changing views towards smoking by offering an aesthetic and discreet solution for the disposal of cigarette butts. Unlike exposed-sand containers, the Buttler conceals discarded cigarettes, keeping the unsightly well out of sight. Buttlers are made for easy servicing and include an internal gasket to inhibit smoldering.

MATERIAL & CONSTRUCTION DETAILS

INSTALLATION & MAINTENANCE

BODY	FINISHES	INSTALLATION	MAINTENANCE
<ul style="list-style-type: none"> Cylinder is made of extruded aluminum with two cast aluminum end caps. A grooved inner wall assists in extinguishing cigarettes and discourages the placement of litter inside. The cigarette graphic is applied in either white or black depending on cylinder color. 	<ul style="list-style-type: none"> Standard cylinder finishes are Silver Anodized, Black Gloss or Evergreen Gloss powdercoat. Standard end cap powdercoat colors are Aluminum Texture, Black Texture, and Evergreen Texture. Due to the nature of metal castings, gloss powdercoats are not offered for cast components. Standard powdercoat color for poles, wall brackets and strap brackets is Black Texture. Optional powdercoat colors from the F+S color chart and custom RAL colors are available for an upcharge. 	<ul style="list-style-type: none"> Pole mount: Surface mounted 48" (1219 mm) high pole with 2.5" (63 mm) diameter includes mounting plate. Wall mount: Tubular stainless steel bracket allows Buttler to be mounted to walls or other vertical surfaces. Strap mount: Stainless steel bracket system allows Buttler to be attached to existing lampposts, street signs or similar vertical supports (medium Buttler only). Litter & recycling receptacle mount: A special bracket is available that allows Buttler to be attached to the side of Forms+Surfaces' Urban Renaissance and Paseo Litter & Recycling Receptacles. Prep must be specified at the time of order (medium Buttler only). 	<ul style="list-style-type: none"> Surfaces can be cleaned as needed using a soft cloth or brush with warm water and a mild detergent. Stains or spotting from cigarettes may be removed using a biodegradable cleaner such as Simple Green. Avoid abrasive cleaners. The bottom end casting incorporates a key-operated security latch to prevent unauthorized access. When unlocked, the cylinder can be lowered and removed for emptying.

NOMINAL DIMENSIONS



MODEL	OVERALL HEIGHT	OVERALL WIDTH	OVERALL DEPTH	OVERALL WEIGHT
SUBUT-MDS	47.9" (1217 mm)	6" (152 mm)	7.6" (193 mm)	11 lbs (5 kg)
SUBUT-MDW	12.4" (315 mm)	4.5" (114 mm)	6.1" (155 mm)	9 lbs (4 kg)
SUBUT-MDB	12.4" (315 mm)	4.5" (114 mm)	4.2" (107 mm)	4 lbs (2 kg)
SUBUT-MDR	12.4" (315 mm)	4.5" (114 mm)	4.2" (107 mm)	4 lbs (2 kg)
SUBUT-LGS	47.9" (1217 mm)	6" (152 mm)	9.4" (239 mm)	14 lbs (6 kg)
SUBUT-LGW	16.8" (427 mm)	6" (152 mm)	7.8" (198 mm)	9 lbs (4 kg)

T 1.800.451.0410 | F 412.781.7840 | www.forms-surfaces.com

FORMS+SURFACES®

END OF SECTION