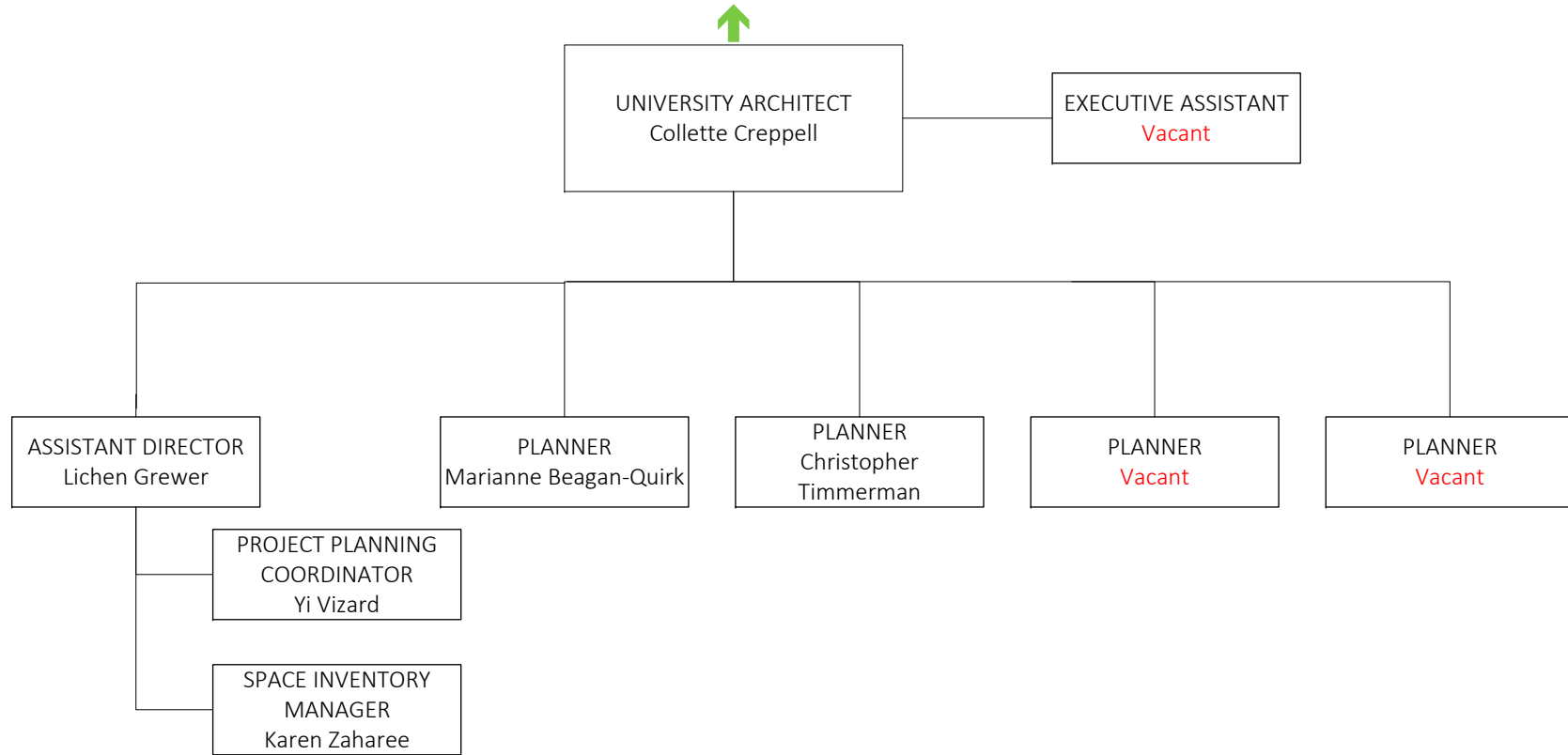
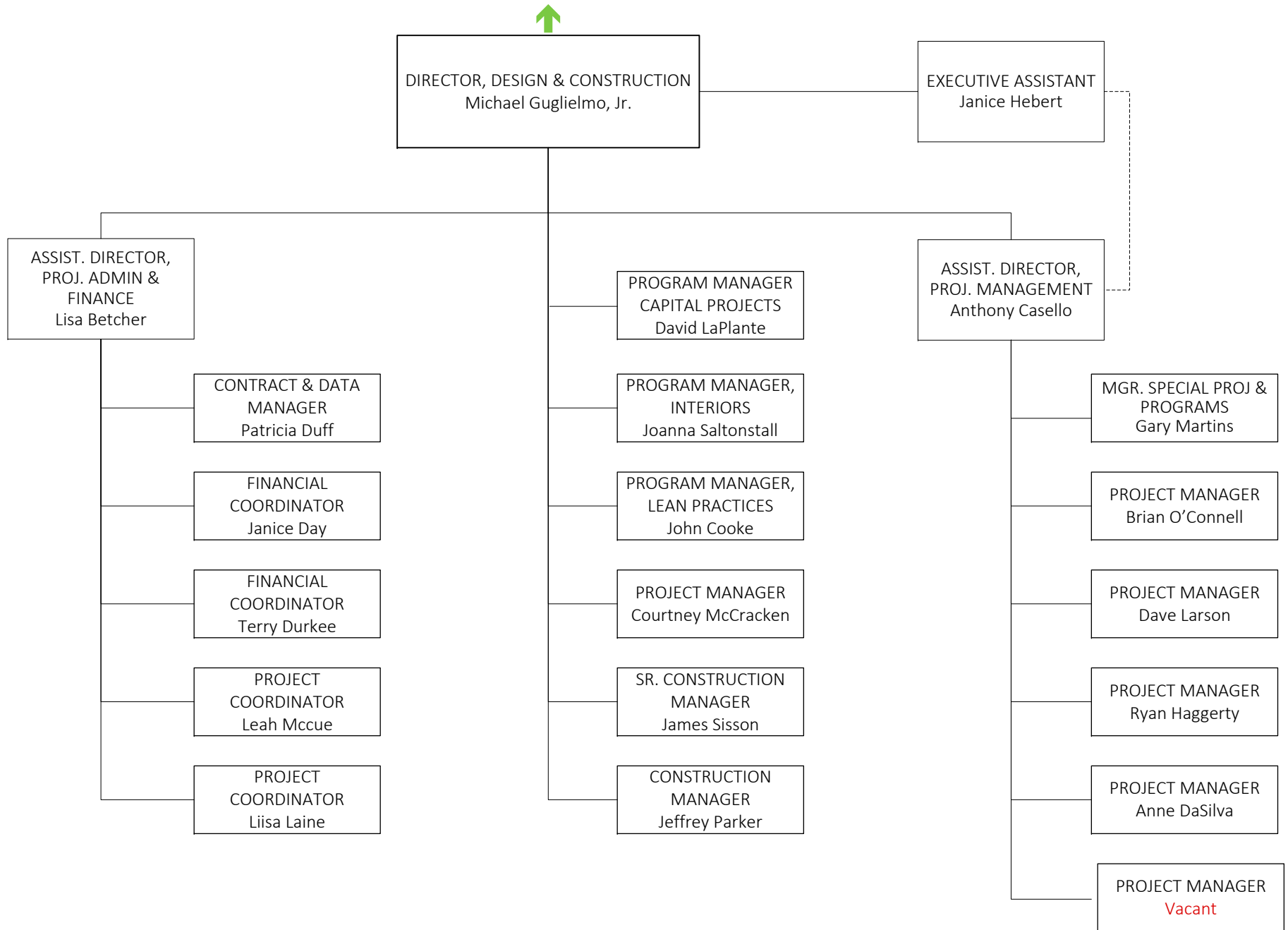




## PLANNING

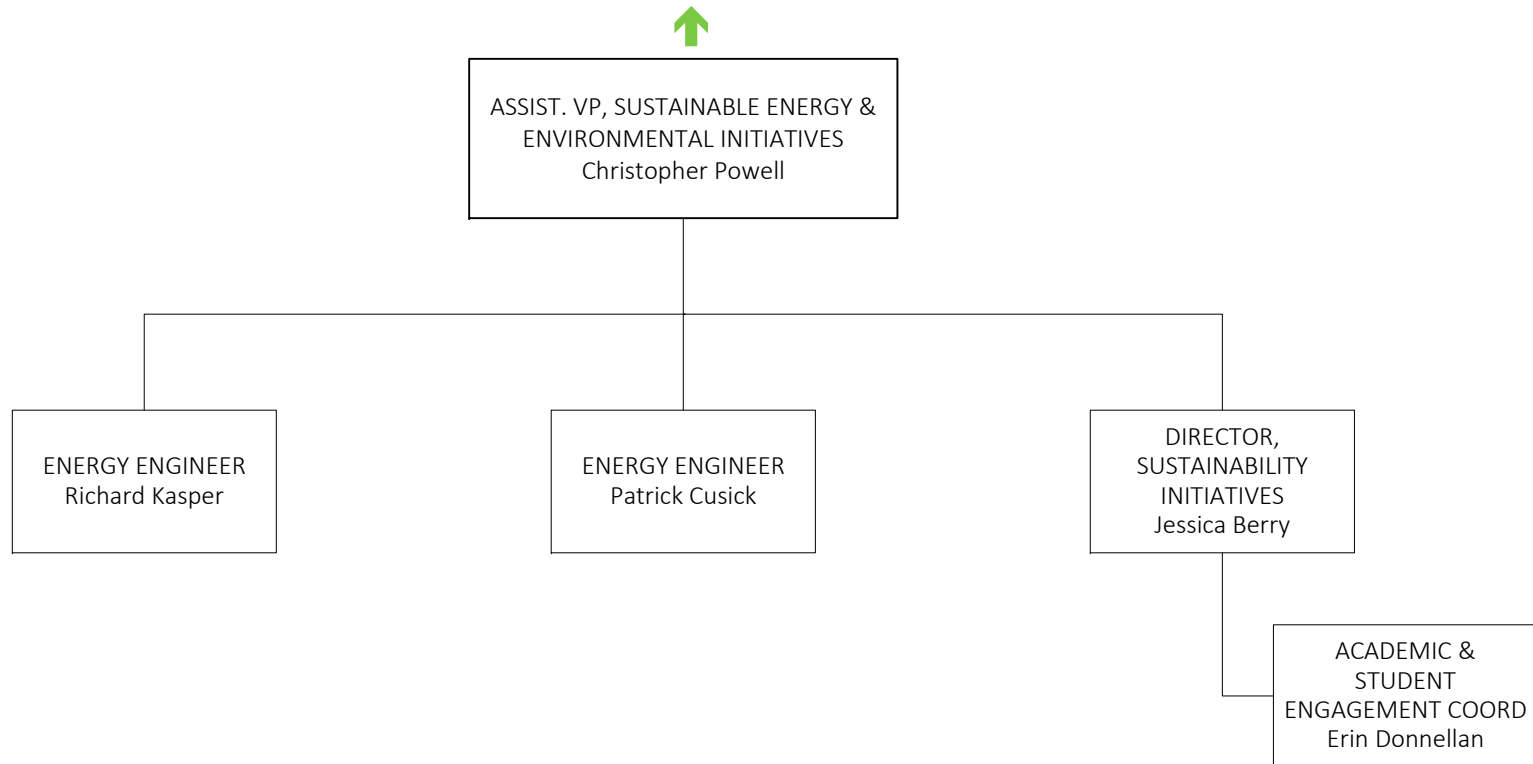


## DESIGN & CONSTRUCTION

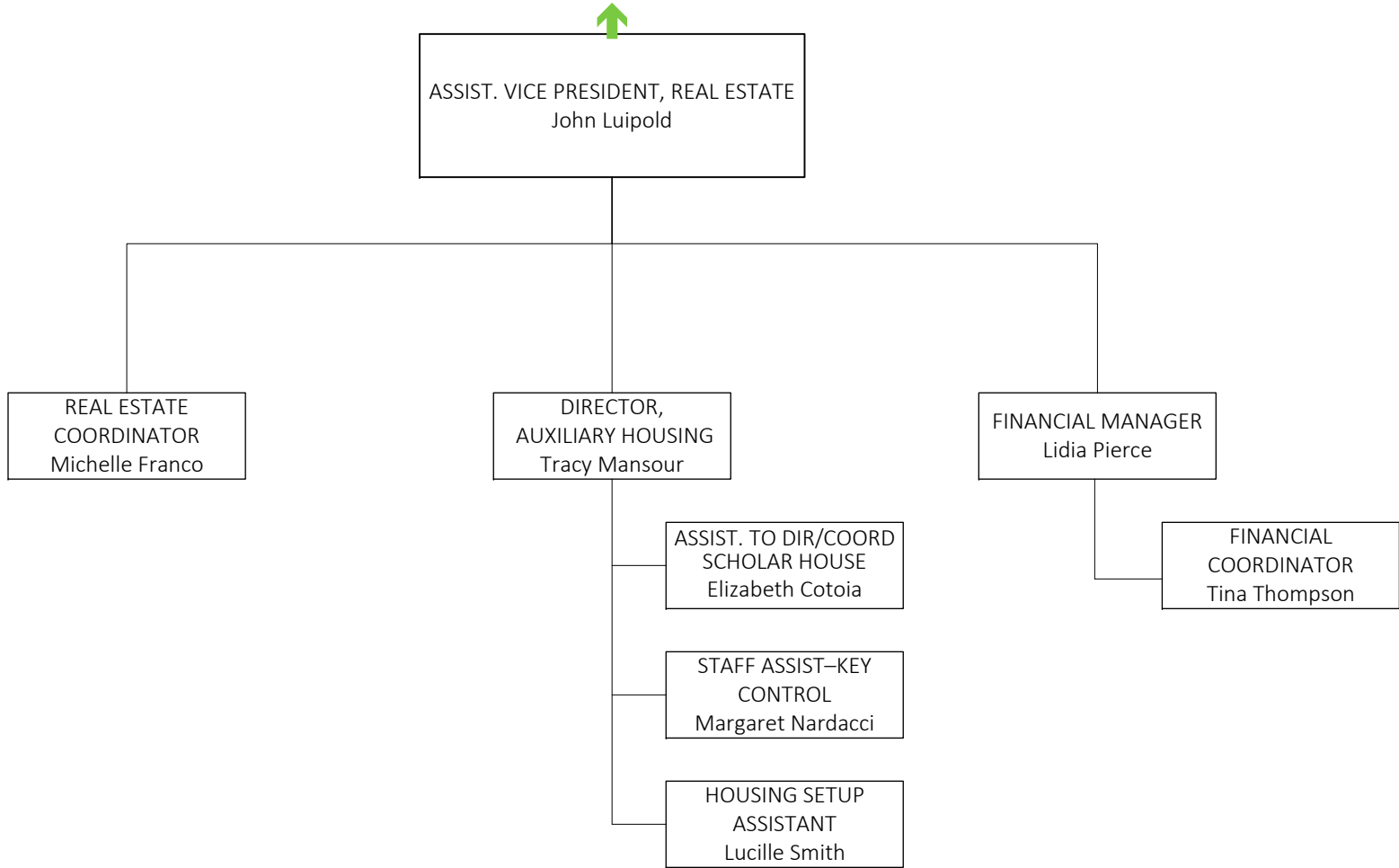




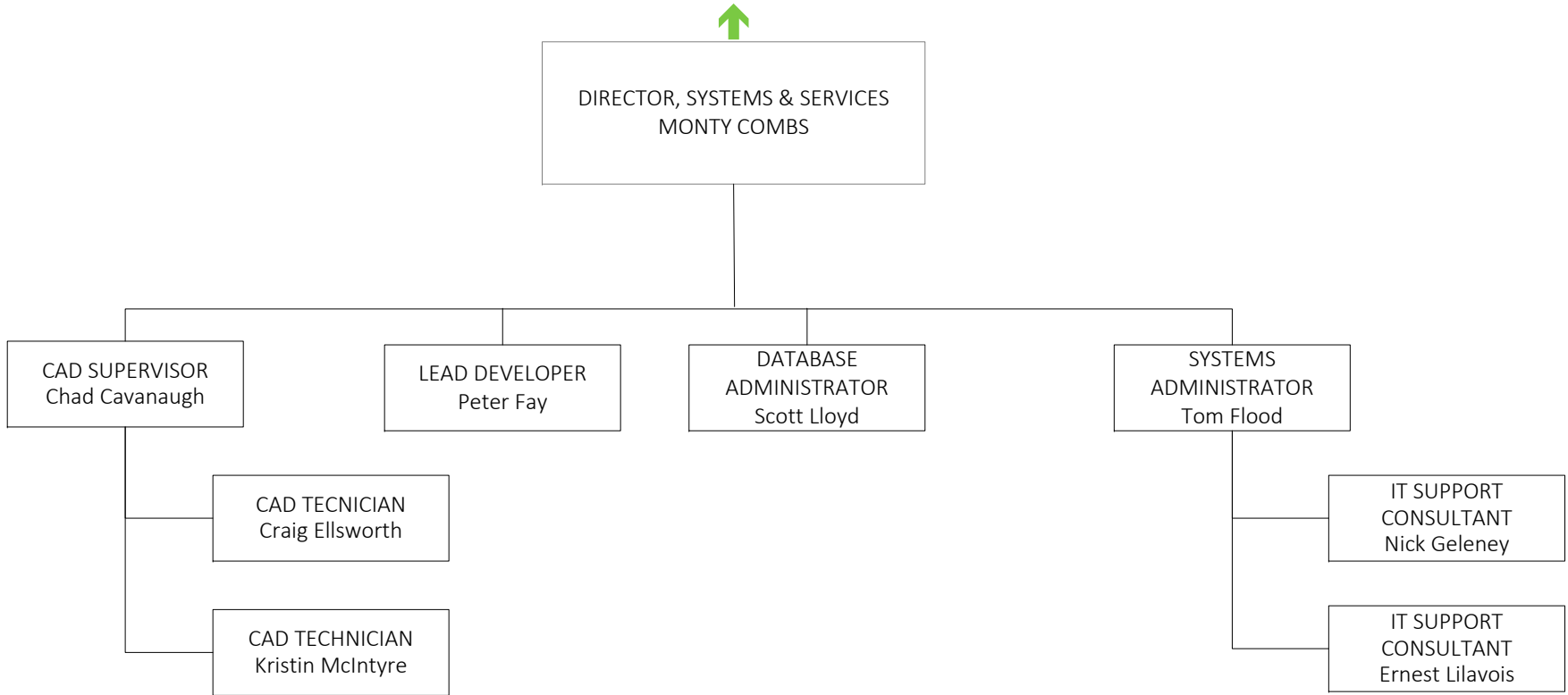
# SUSTAINABLE ENERGY & ENVIRONMENTAL INITIATIVES



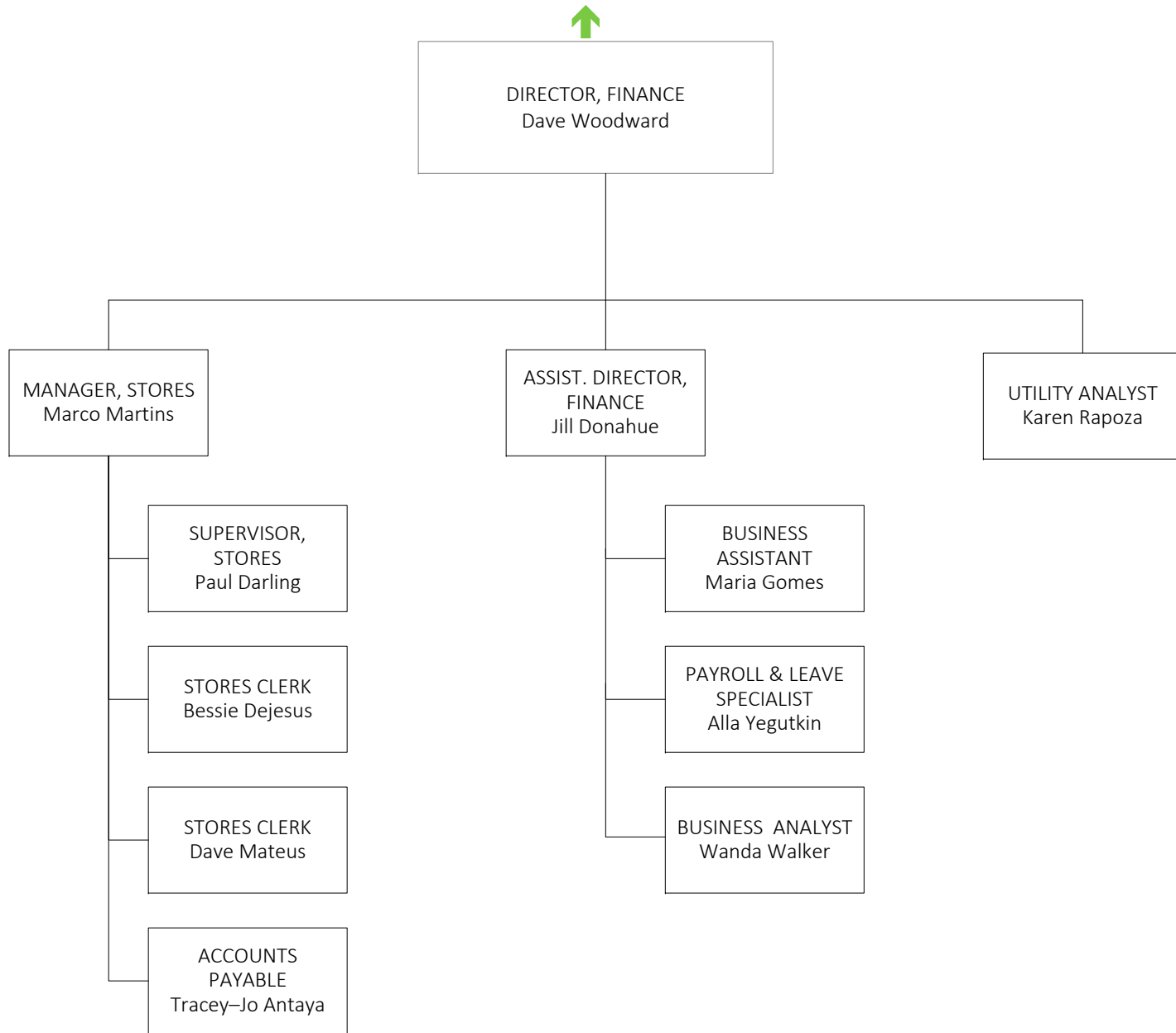
## REAL ESTATE



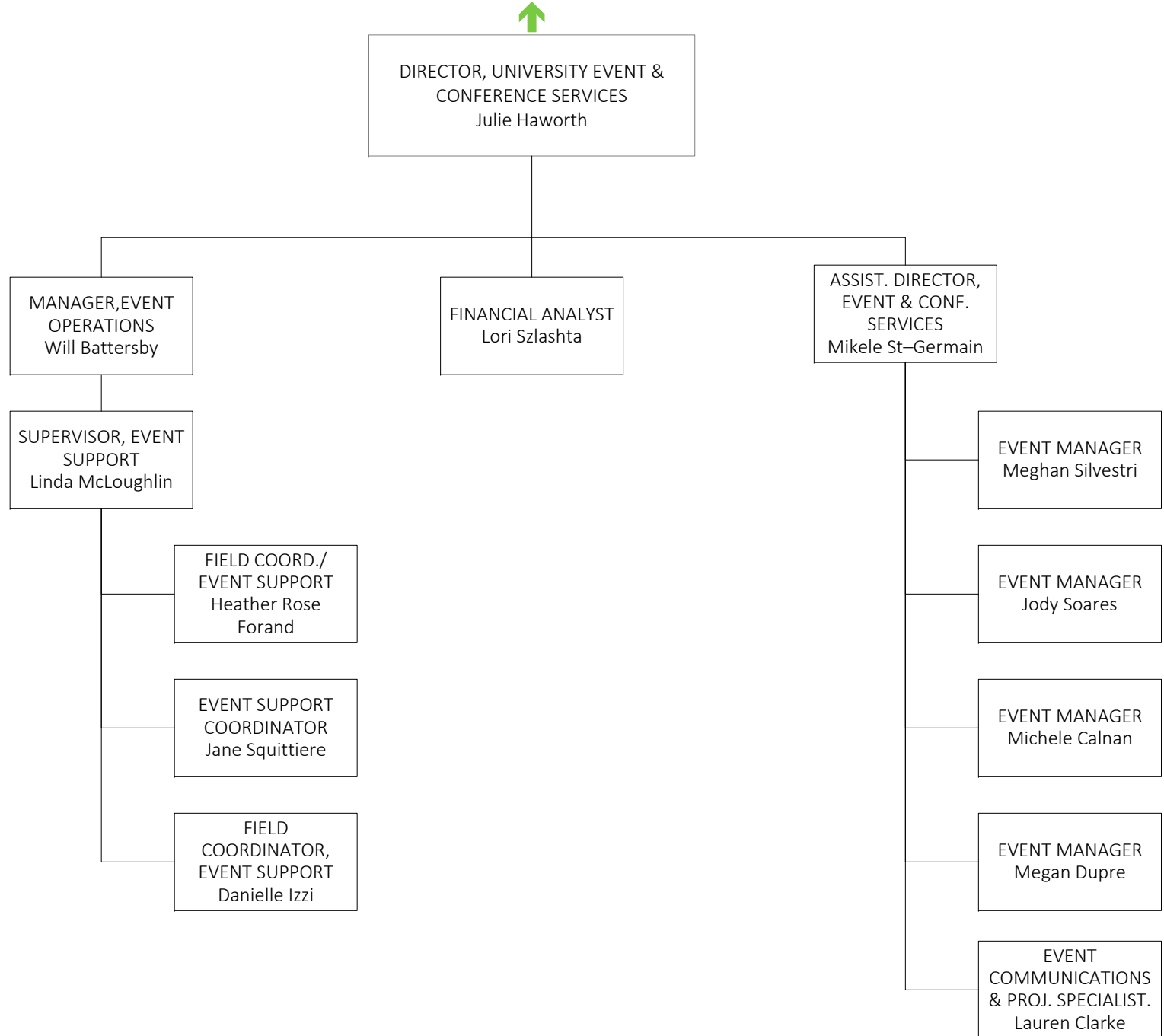
## SYSTEMS & SERVICES



# FINANCE

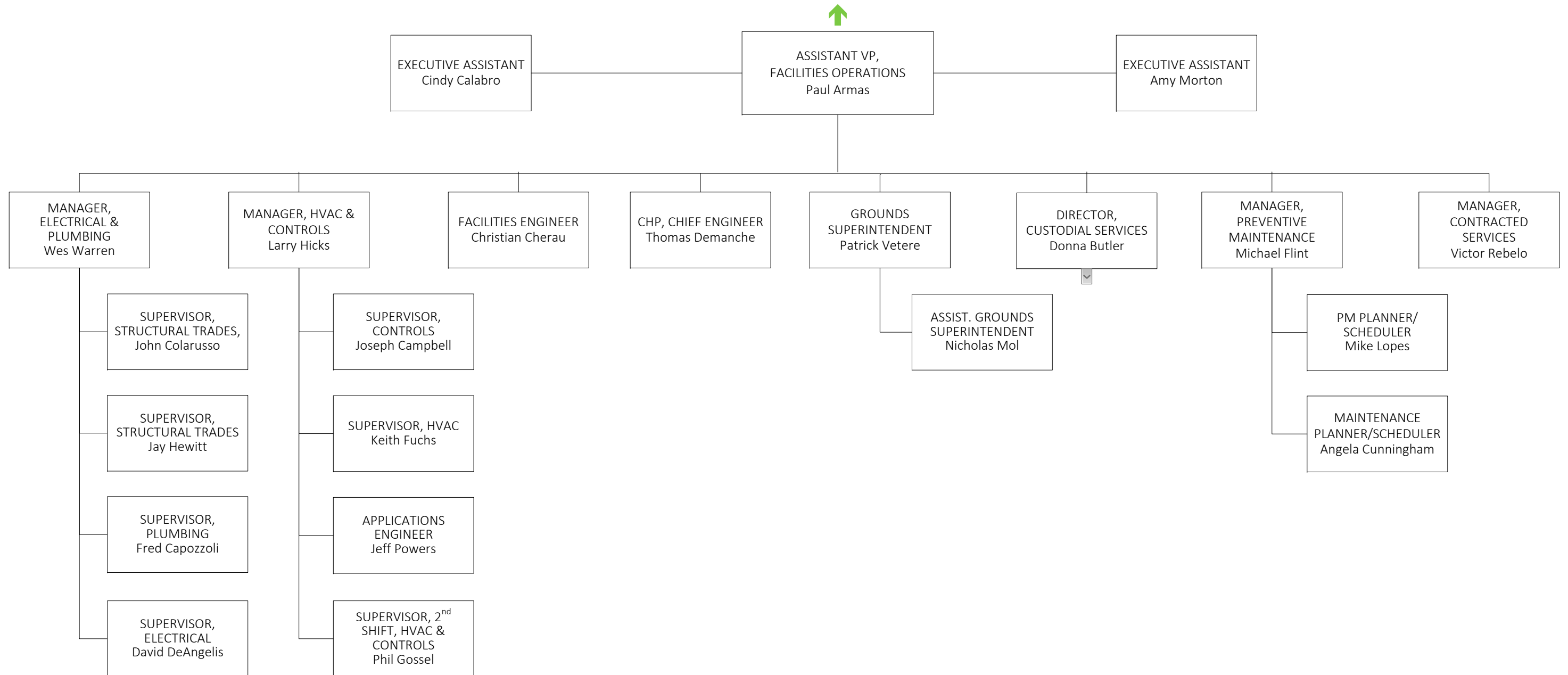


# UNIVERSITY EVENT & CONFERENCE SERVICES



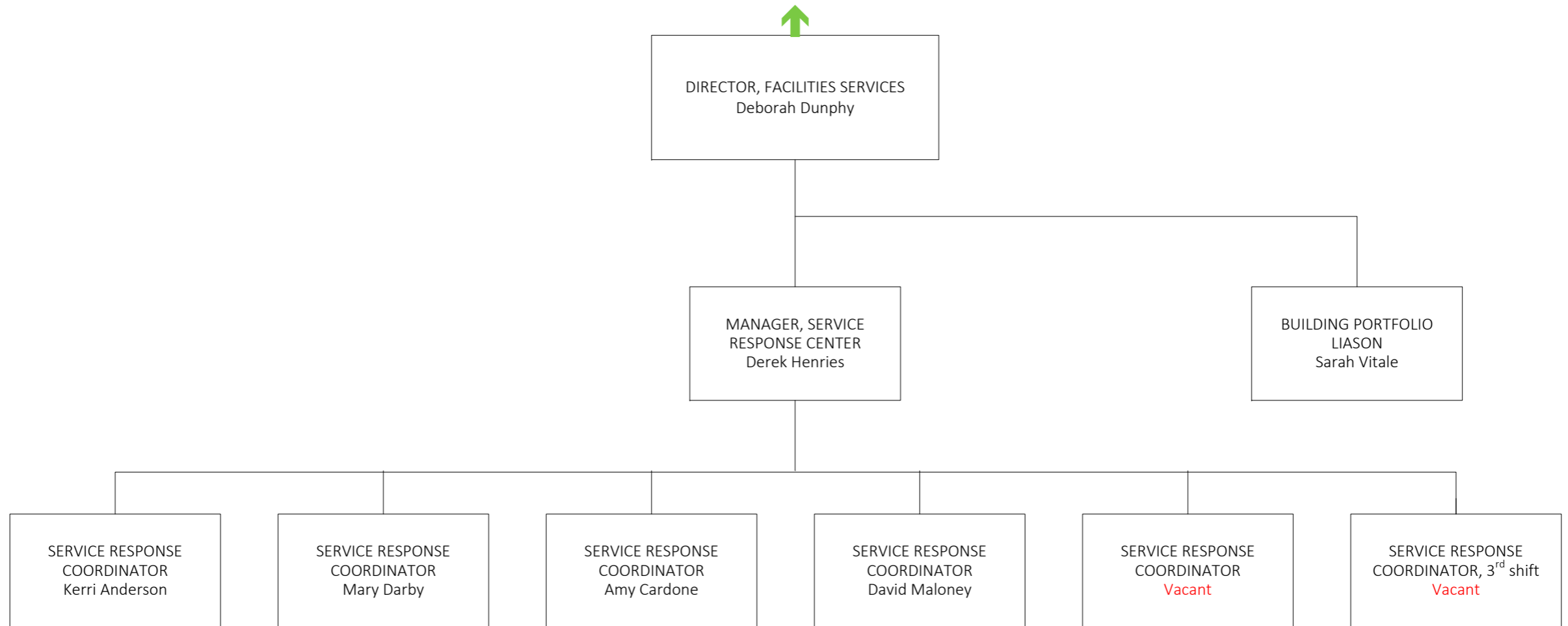


## FACILITIES OPERATIONS





## FACILITIES SERVICES



# CUSTODIAL SERVICES



DIRECTOR, CUSTODIAL SERVICES  
Donna Butler

