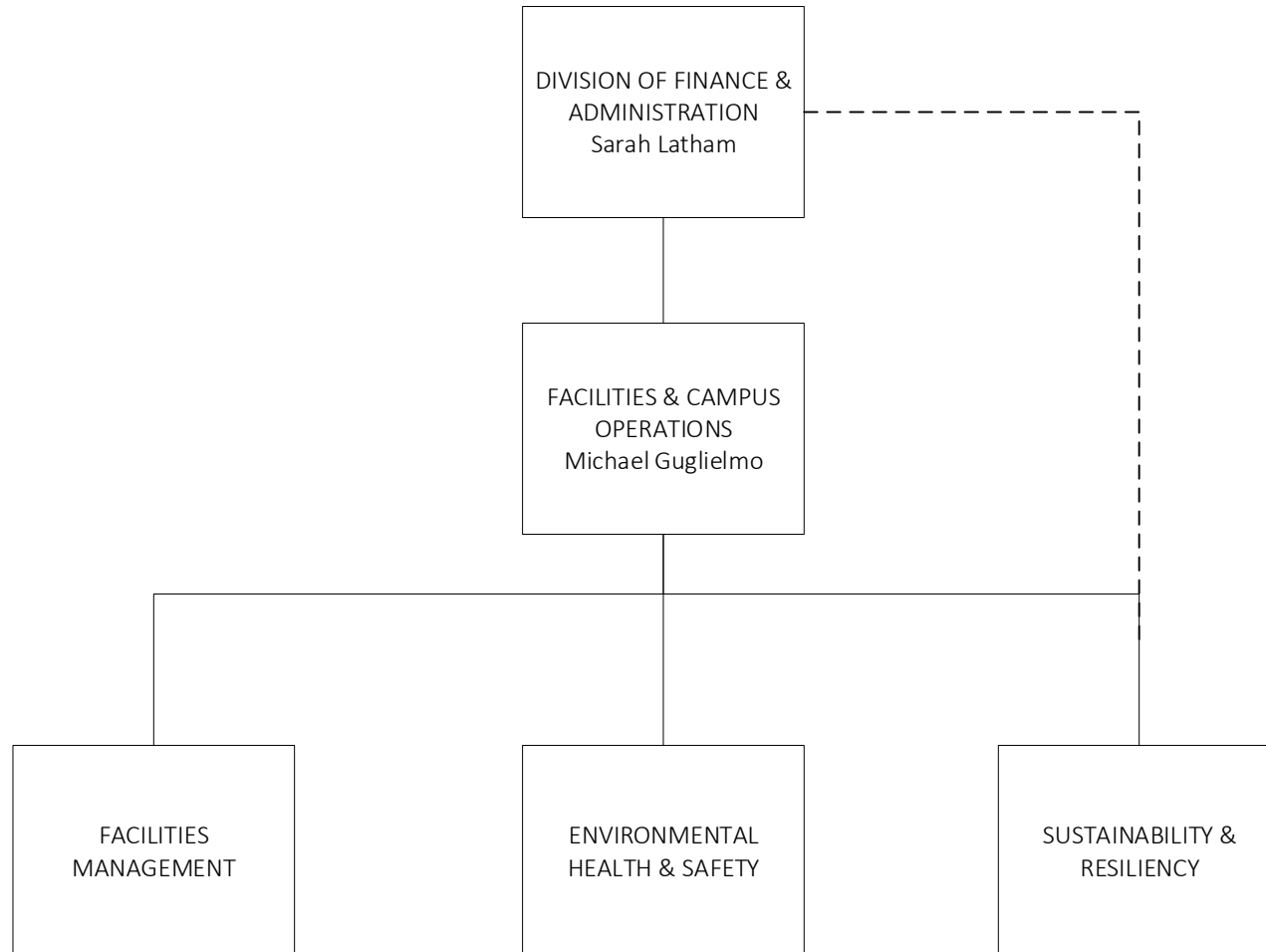
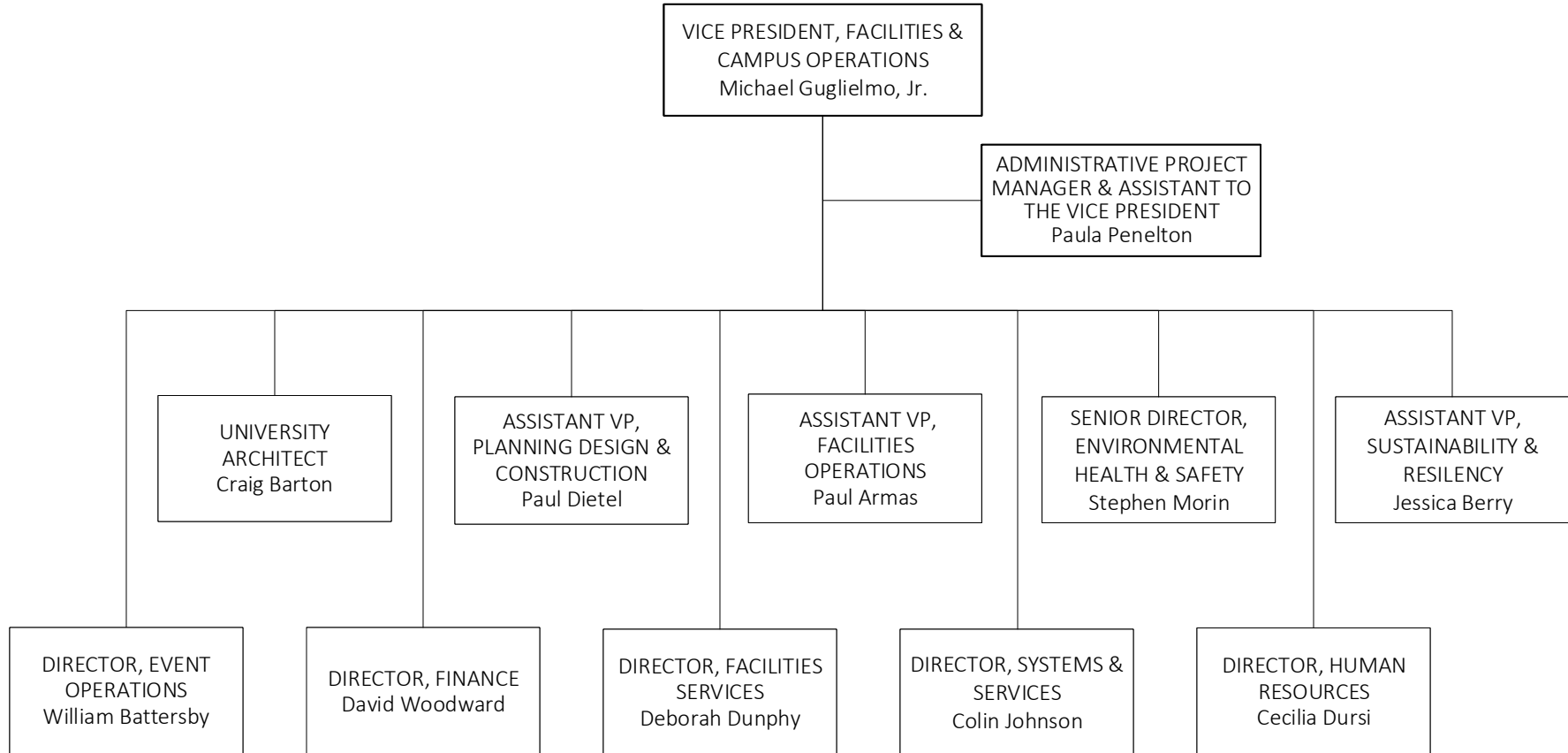


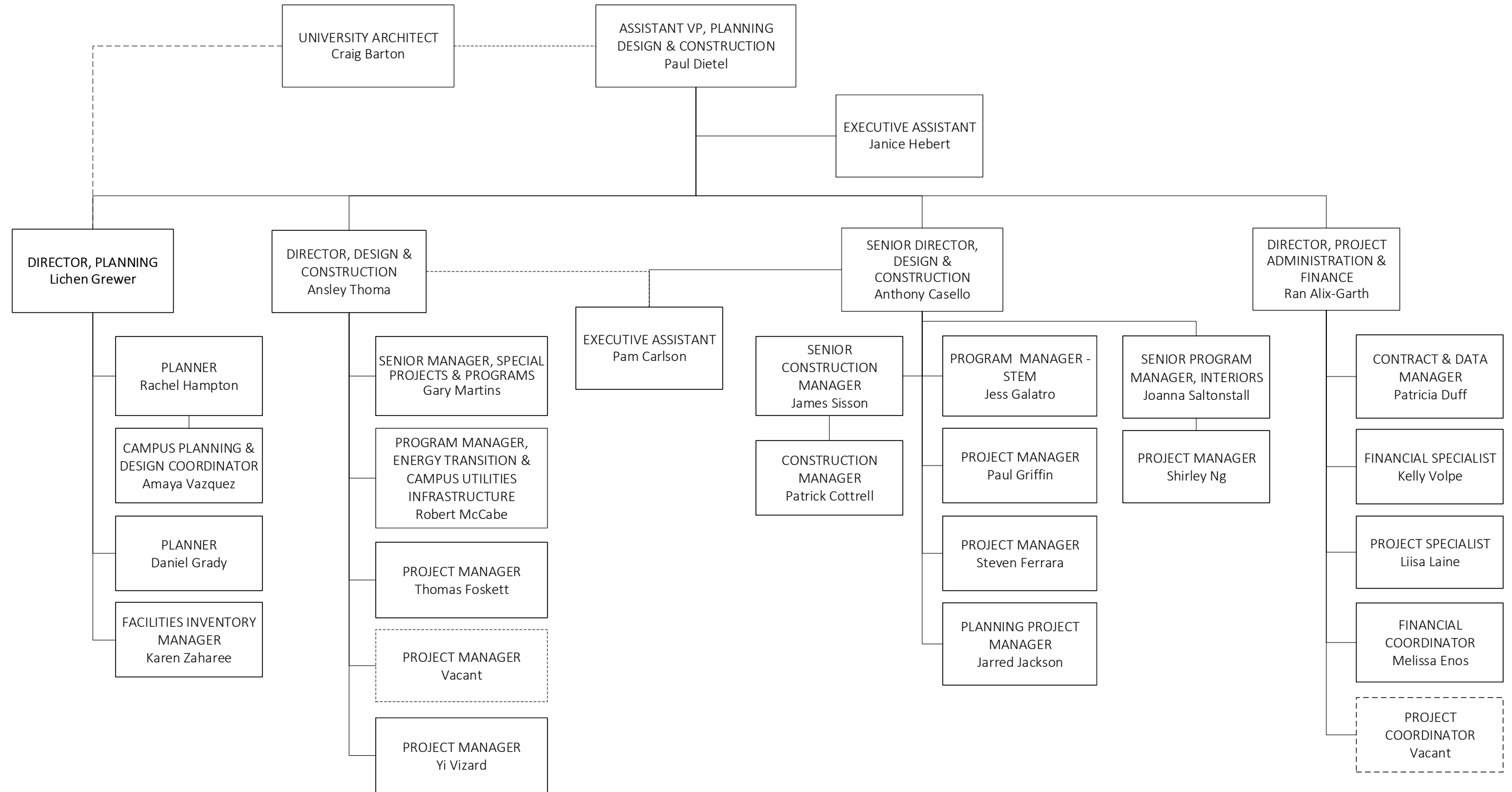
## FACILITIES MANAGEMENT & CAMPUS OPERATIONS





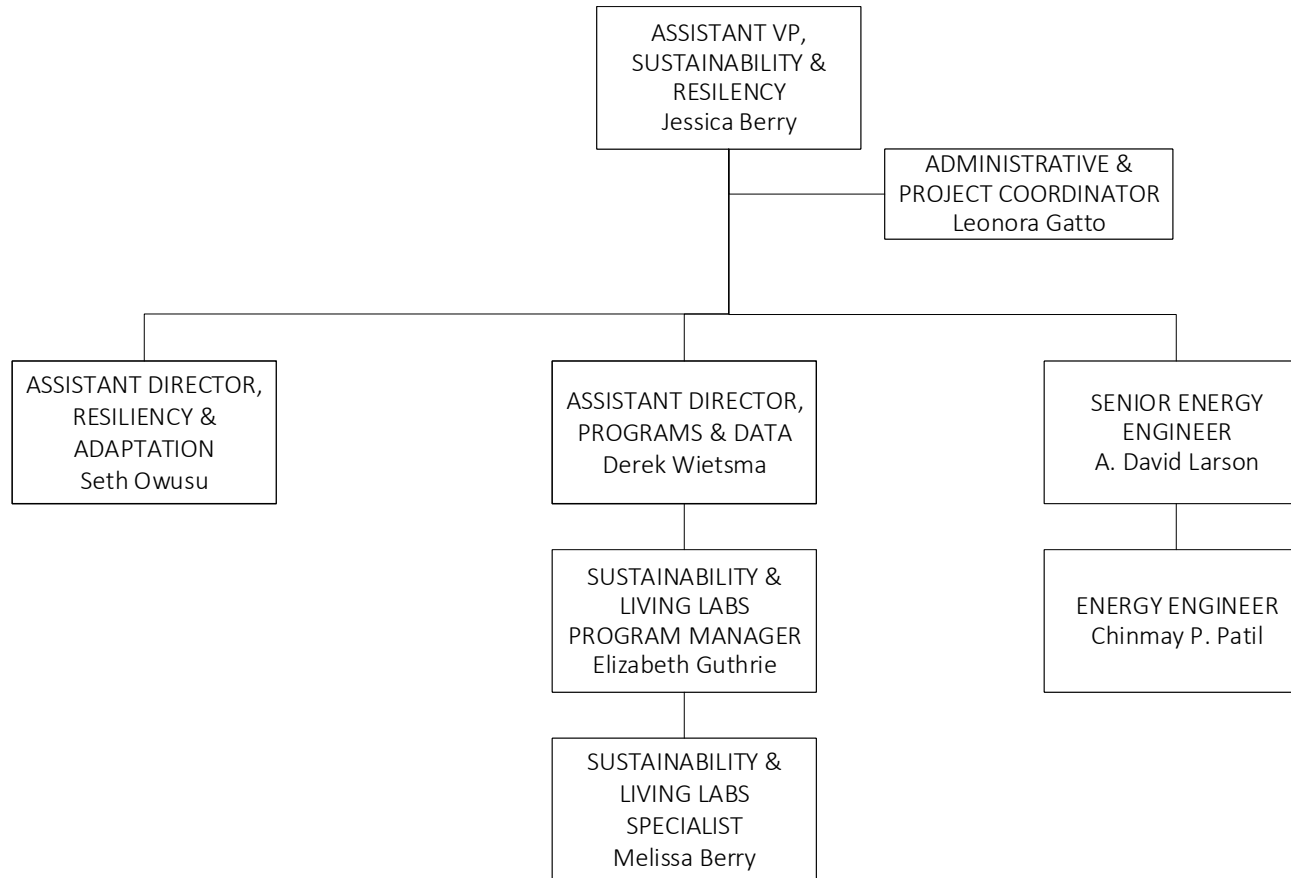


## PLANNING, DESIGN, & CONSTRUCTION (PD&C)





## SUSTAINABILITY & RESILIENCY



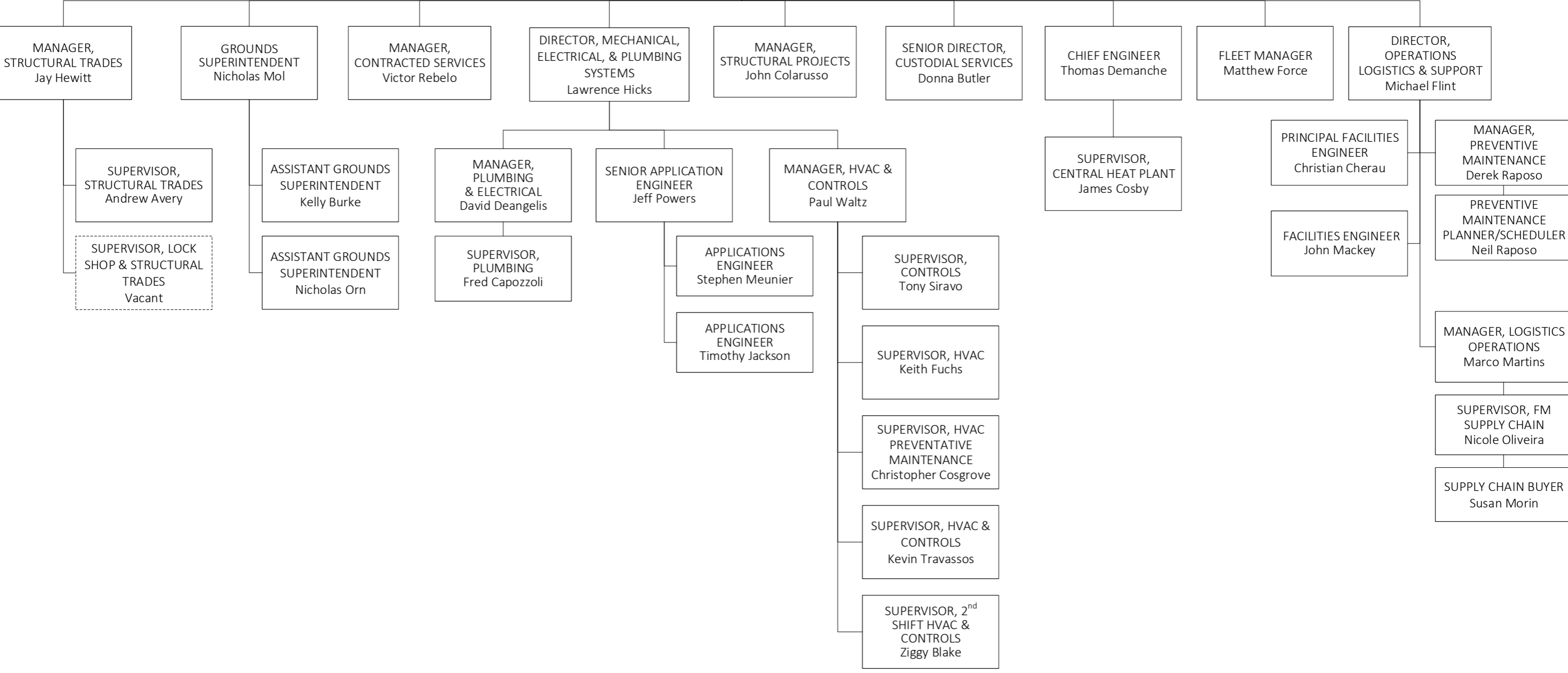


**FACILITIES OPERATIONS**

ASSISTANT VP, FACILITIES OPERATIONS  
Paul Armas

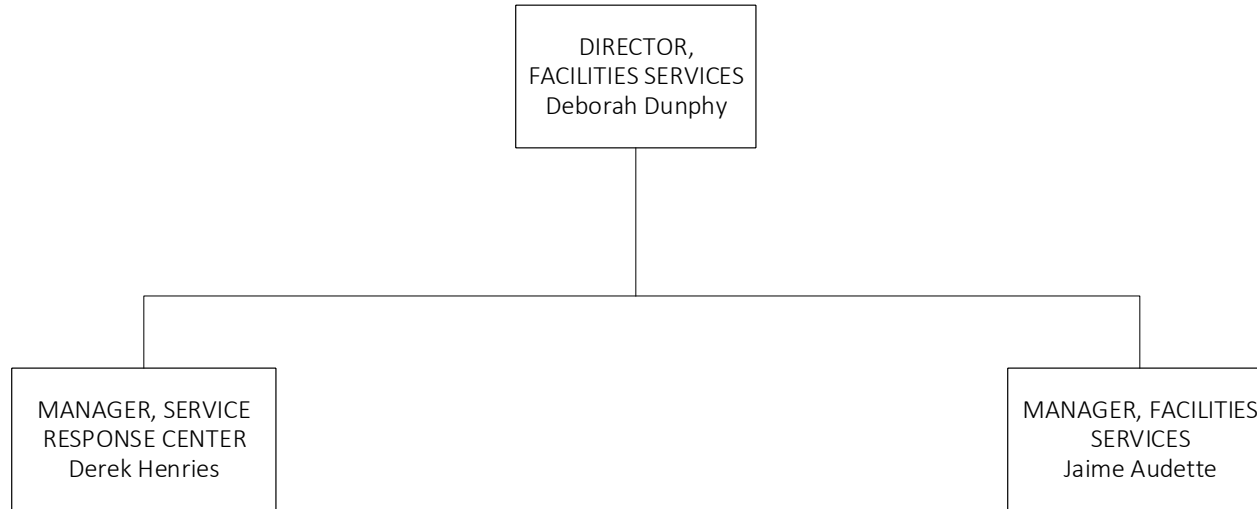
EXECUTIVE ASSISTANT  
Amy Morton

EXECUTIVE ASSISTANT  
Cindy Calabro

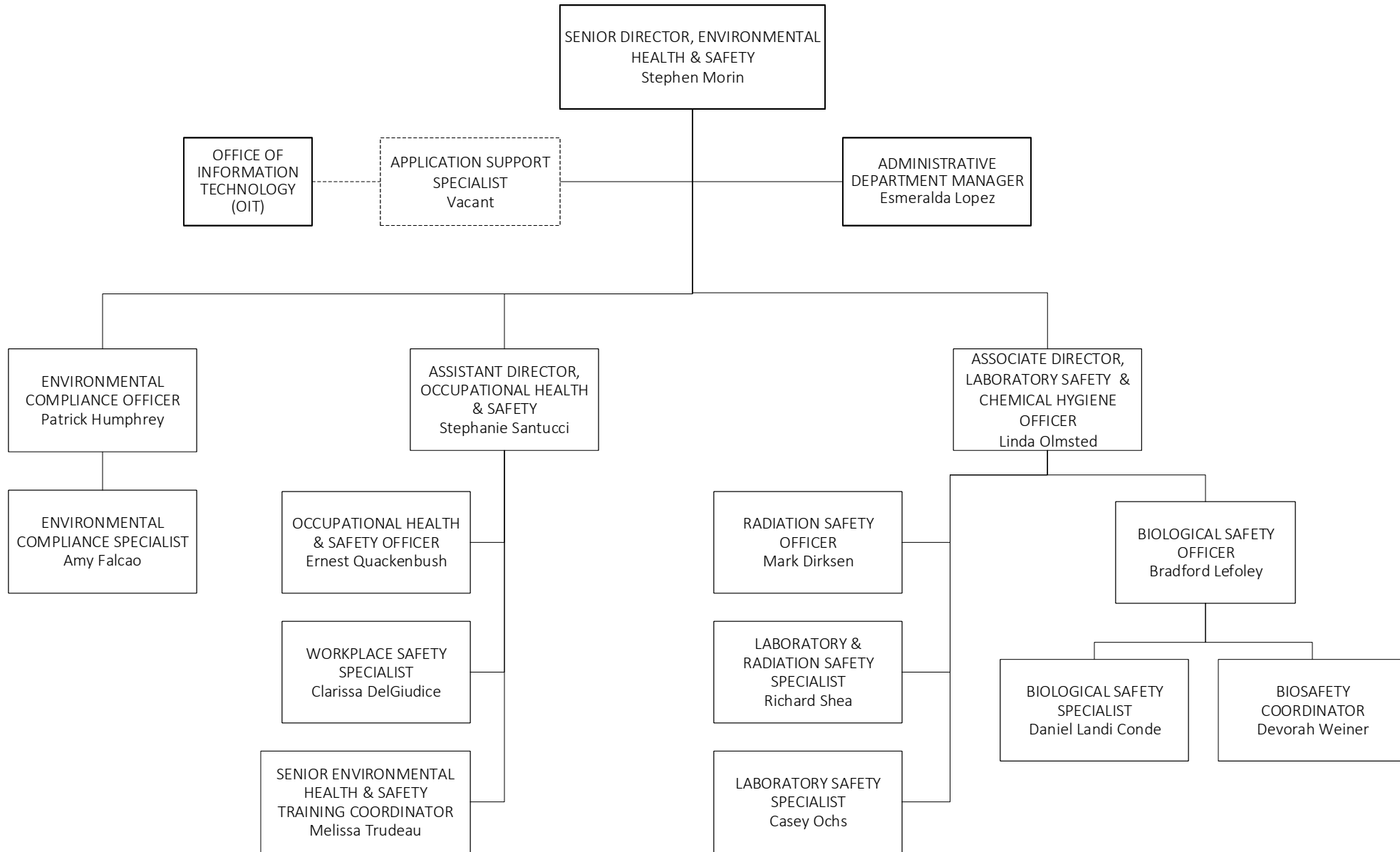




## FACILITIES SERVICES

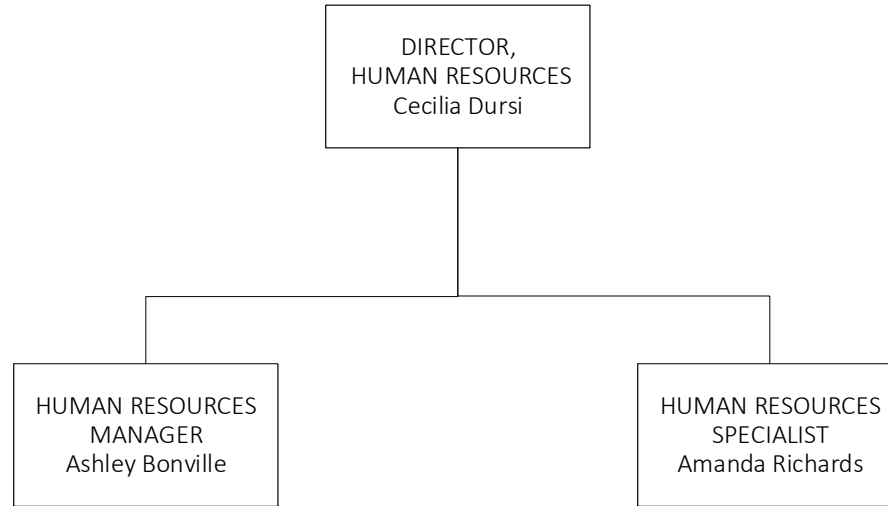


## ENVIRONMENTAL HEALTH & SAFETY (EH&S)





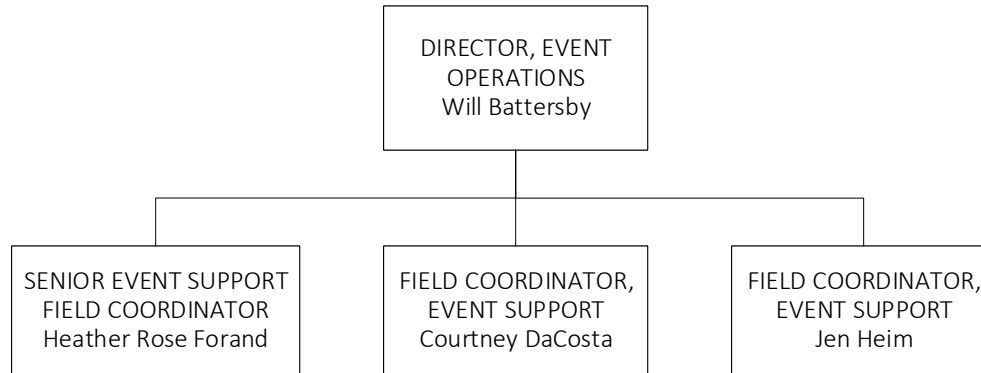
## HUMAN RESOURCES





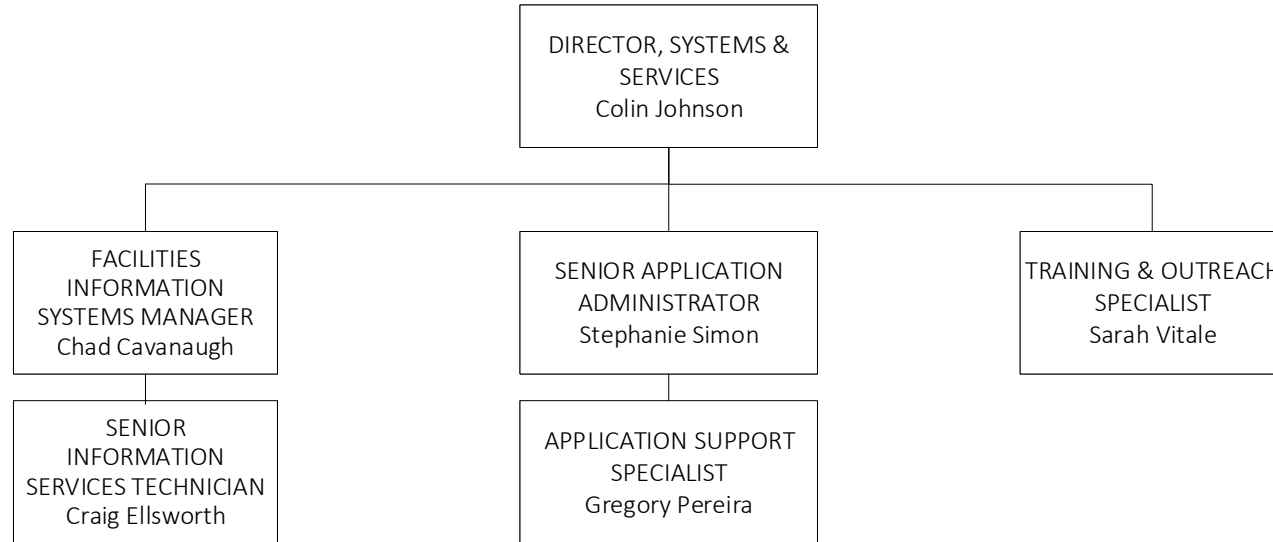


## EVENT OPERATIONS

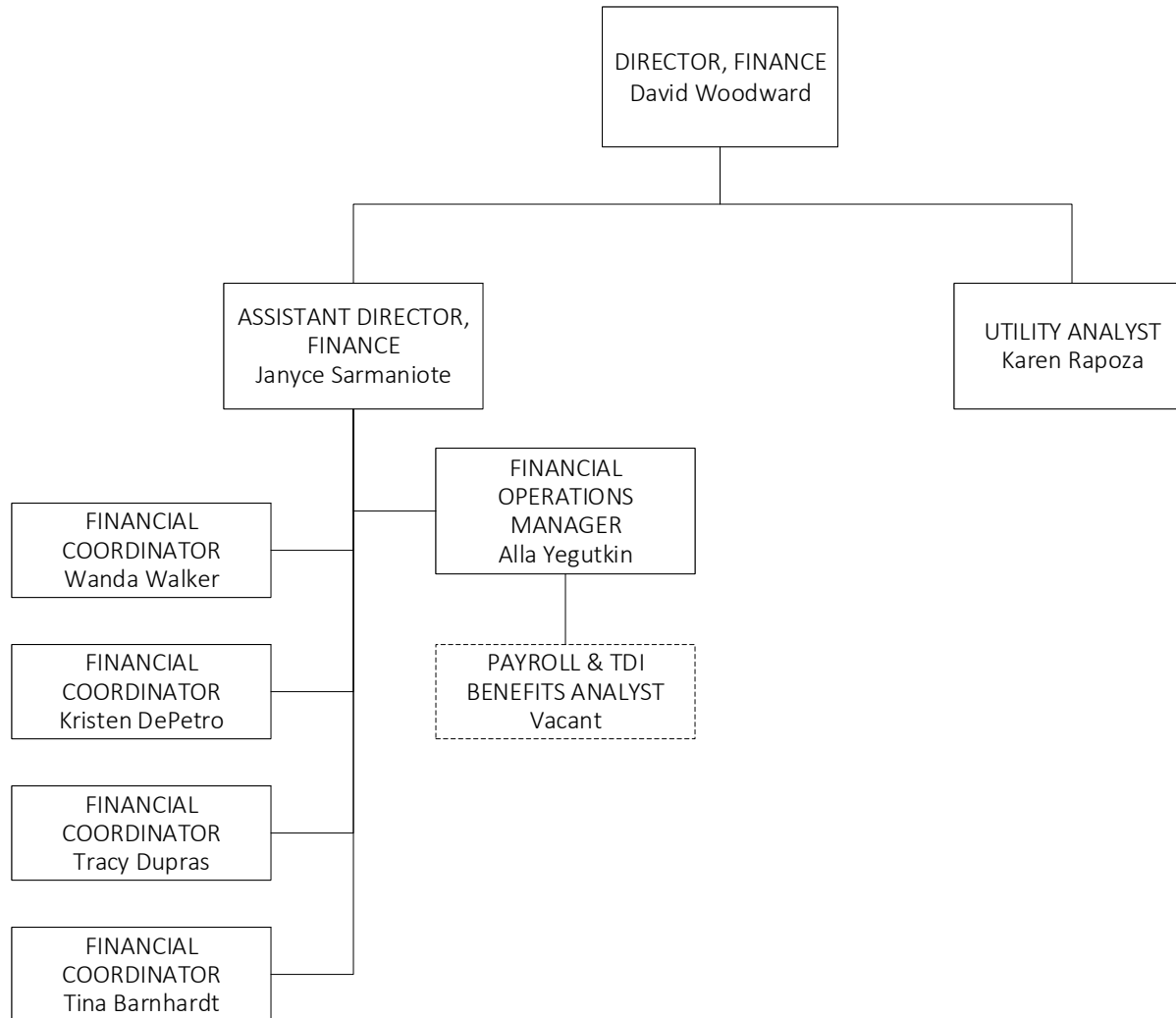




## SYSTEMS & SERVICES



## FINANCE



## CUSTODIAL SERVICES

