

FACILITIES NEWS

SUMMER 2015

*We Care**Ornamental Grasses on the Walk*

AT A GLANCE:

NEW APPLIED MATH BUILDING	1
COMPOST ON THE HORIZON	2
SHARPE REFECTORY RE-LAMPING	
SOCIAL ENTERPRISE INCLUBATOR OPENS IN REAL ESTATE PROPERTY	3
CUSTODIAL PROJECTS	3
SUMMER PROJECTS LIST	4-5
STAFF LECTURE AND COOKOUT	6
JWW MAILROOM RENOVATION	7
VISUAL AIDS	
AUXILIARY HOUSING	
REMINDERS	8
COMINGS & GOINGS	
SAVE THE DATE	
HOLIDAYS	

NEW APPLIED
MATH BUILDING

A NOTE OF THANKS

This issue of *Facilities News* focuses on environmental initiatives, projects, and more.

Thank you all for the hard work that is being done around campus to ready for the return of students in the next few weeks. The “*Summer Projects*” lists, on Pages 4 and 5, highlights some of that work; and other projects are noted throughout this edition.

As the new building for Applied Math is being completed, work is underway for the new building for the School of Engineering. See photos below for the Applied Math building and renderings on Page 8 of the School of Engineering building. For more information on both projects, visit the [Building Brown](http://www.brown.edu/Facilities/Building_Brown/) website at http://www.brown.edu/Facilities/Building_Brown/ and check out the project construction

[webcams](http://www.brown.edu/Facilities/Building_Brown/) at http://www.brown.edu/Facilities/Building_Brown/

Our Sustainable Energy and Environmental Initiatives (E&E) staff have been busy. To keep up with the changing Rhode Island state law governing diversion of all organic waste, E&E staff, along with Brown Dining Services, have been working to develop and implement a campus-wide composting program. Read more on what’s on the *horizon* for composting at Brown on Page 2.

I am very pleased that, once again, Facilities’ staff have the opportunity to participate in a lecture with a Brown University professor. On Friday, August 7th, Dr. Loury, the University’s Merton P. Stoltz Professor of the Social Sciences and Pro-

fessor of Economics, will lecture to Facilities Management staff. (See Page 6 for details.) If you are interested please join us for the lecture and afterwards for the staff cookout. I look forward to seeing you all.

Please join me in welcoming Gail, Betty, Tina, and Margaret from Auxiliary Housing to Facilities Management. See Page 7 for details. We welcome you and look forward to seeing you all on Friday.

Your continued support of the University and Facilities Management is appreciated.

Sincerely,

Vice President
Facilities Management

COR-TEN STEEL (NOT YOUR GRANDMOTHER'S SHINGLE)

The new Division of Applied Math building being constructed at the corner of Hope and George streets has an unusual cladding material. A shingle yes, we are very familiar with these on our New England campus. But this is a new spin on a traditional favorite.

The building, designed by the Architecture Research Office,

who also designed the Friedman Study Center at Sciences Library, is clad in Cor-Ten steel.

Cor-Ten steel has an alloy developed to eliminate the need for painting; it forms a stable, rust-like appearance. For more information on the project visit the [Building Brown](http://www.brown.edu/Facilities/Building_Brown/) website.



COMPOST ON THE HORIZON



Composting programs are being developed to divert all organic waste material, including food scraps, food processing residue, and soiled or unrecyclable paper. It is anticipated that the benefits to campus and the community will be significant, including at least a 10 percent increase in our current diversion rate of 37 percent. Projections show Brown could have at least a 40 percent diversion rate with the institutionalization of composting.

Additional benefits include reduced contribution to GHG emissions, internship opportunities, free compost for Grounds, and eliminating fees for hauling yard waste. To prepare for rolling out a campus-wide composting program, our Sustainable Energy & Environment (E&E) Initiatives Office has partnered with Brown Dining Services (BDS) to pilot two

composting programs—one at the Sharpe Refectory and the other at Andrews Commons. The Sharpe pilot was intended to begin the back-of-house process of switching from pig farmer diversion to compost diversion. The Andrews pilot aimed to assess

best practices for logistics and communications in engaging patrons to separate their organics from trash and recycling. During the fourteen-week pilot at Andrews, each week about 2,600 lbs. of material was diverted from the trash to become compost. Over the course of the summer, the E&E team, along with BDS, will work to develop and implement a campus-wide

composting plan, beginning with all dining facilities and catered events. It is expected that by this time next year Brown will have a robust composting program at all dining locations, cafes, and catering events. We are excited to undertake this intensive program, as waste reduction and diversion is an essential practice for any institution aiming towards sustainability and social responsibility.

For more information on the law go to <http://www.rilin.state.ri.us/pressrelease/layouts/RIL.PressRelease.ListStructure/Forms/DisplayForm.aspx?List=c8baae31-3c10-431c-8dcd-9dbbe21ce3e9&ID=10038> and for more information on what to do in the office, contact Jess (x3-7939) or Meggie (x3-6717) in the E&E office.

ORGANIC WASTE



Preventative Maintenance, Sharpe Refectory Re-lamping

While planning for a full re-lamp at



Sharpe Refectory, Division 3 suggested that this was an opportunity to convert to LED lamps.



This conversion will save energy and lower operating costs rather than replacing with the same style of light fixture.



SOCIAL ENTERPRISE INCUBATOR OPENS IN REAL ESTATE PROPERTY



Social Enterprise Greenhouse (SEG), Rhode Island's first social enterprise incubator celebrated the grand opening of its new hub this past spring in the Jewelry District. SEG's new headquarters, for co-working and educational space, is located at 10 Davol Square. **The SEG space was developed in collaboration with a lease through Brown University and will be home to the region's newest and most innovative social enterprise startups.** SEG provides a variety of services which supports the growth of this startups at every stage of their venture development. Over the past five years, SEG has helped develop a portfolio of more than 150 social enterprises, including Amos House and Capital Good Fund which has resulted in over 750+ jobs being created. At the grand opening event, Kelly Ramirez, CEO of SEG, said "We could not have made the Hub vision a reality without the generosity of our partners at Brown University. We are so grateful!"

The event was attended by many in the community who support the innovation and socially conscious entrepreneurship developed through the startups. Opening remarks included congratulations from U.S. Senator Sheldon Whitehouse and U.S. Rep-

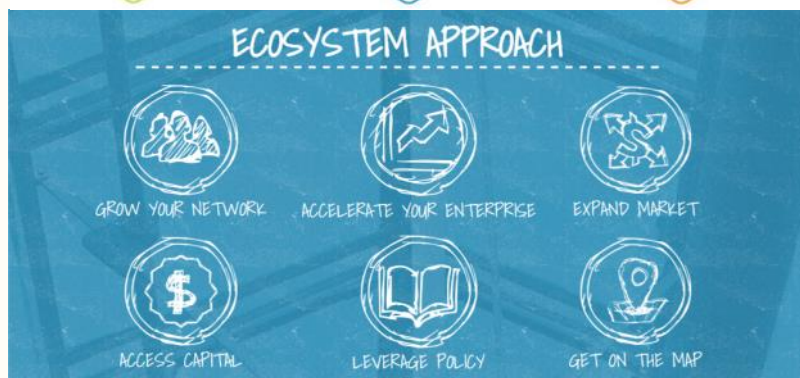
resentative David Cicilline. Russell Carey, Executive Vice President for planning and policy at Brown added, "Brown congratulates Social Enterprise Greenhouse on this exciting next step of opening the hub. We are thrilled to be able to provide SEG with a space at 10 Davol Square as their tenancy complements Brown's vision of helping create a vibrant community in the Jewelry District and fostering economic development and social enterprise in Providence."

Brown and SEG also co-organize the SEEED Summit, a two-day national social enterprise that takes place on the Brown Campus. Over 100 volunteers of this student-run organization bring social entrepreneurs, practitioners, business leaders, academics, impact investors, students, and policymakers to campus each year.

The link below has been provided to learn more about Social Enterprise Greenhouse.

<http://segreenhouse.org/>

Social Enterprise Greenhouse creates positive social and economic impacts by supporting social entrepreneurs and enterprises with the tools and networks they need to thrive. We are a network of business and community leaders who contribute time, expertise and money to create jobs and support positive change through social enterprise.



WHAT IS THE SOCIAL ENTERPRISE GREENHOUSE HUB?

The Social Enterprise Greenhouse Hub is Rhode Island's first community and co-working space where social entrepreneurs, mentors, and business professionals come together to network, share ideas, create jobs and improve our community. The Social Enterprise Greenhouse Hub is THE PLACE for new and established do well do good businesses. Will YOU be part of this movement?

CUSTODIAL PROJECTS (WITH ENVIRONMENTALLY-FRIENDLY PRODUCTS)



Summer is a great time for the custodial group to address issues that are difficult to do when buildings are full to capacity.

The custodial supervisors submit work orders for their teams to address detail cleaning of offices, carpets, flooring, wall/ceiling vents,



light lenses, windows and, of course, bathrooms.

Dormitory cleaning occurred in May. However, many projects continue throughout the summer including detailed cleaning of kitchens and lounges.



SUMMER PROJECTS LIST

Facility Name	Project Title	Complete	Contact
Andrews House	Emergency generator radiator replacement	08/31/15	Operations
Angell St. 195	Cosmetic improvements & basement cleanout	08/31/15	Divisions 1 & 2
BioMed Center	Electric panel tap changes	07/30/15	Michael Kenney
BioMed Center	Retro-commissioning	09/30/15	David Larson
BioMed Center	HHMI Teaching Laboratory-Room 112C	07/15/15	Michael Kenney
BioMed: ACF	Cage washer renovations	07/14/15	Michael Kenney
Bowen St. 251	Exterior paint	08/28/15	Gary Martins
Brook St. 456	Exterior paint	09/01/15	Gary Martins
Central Heat Plant	Fire alarm & detection installation	10/01/15	Courtney McCracken
Dormitories	Interior paint	09/01/15	Gary Martins
Energy Conservation	Retro-commissioning, Phase 3	07/31/15	David Larson
Faculty Club	Roof replacement	07/01/15	Gary Martins
Faunce House	Room 037 renovation	07/15/15	Gary Martins
Faunce House	Repairs to exterior stair at Waterman St.	09/01/15	Gary Martins
Fiering House	Exterior paint	08/28/15	Gary Martins
GeoChem	Dock leveler replacement	08/15/15	Brian O'Connell
GeoChem	Re-keying	08/31/15	Divisions 1 & 2
GeoChem	Hot water/chilled water riser flushing	08/31/15	Division 8
GeoChem	PH neutralization pumping system replacement	08/31/15	Operations
George St. 025	Exterior paint	08/28/15	Gary Martins
George St. 182	Lighting fixture refurbishment	08/31/15	Division 3
Grad Center E	ADA accessibility	09/01/15	Brian O'Connell
Grad Towers A-D	Medium temp hot water pump replacements & hot water riser flushing	08/31/15	Division 8
Grad Towers A-D	1st floor bathroom piping re-insulating	08/31/15	Division 8
Hegeman Hall	Piping & condensate receiver installation	08/31/15	Division 8
Hope College	Wireless upgrades	08/12/15	Michael Kenney
Hope St. 170	Applied Math & Engineering enabling	09/18/15	David LaPlante
J. Walter Wilson	Counseling & Psychological Services expansion, Phase 2	08/01/15	Gary Martins
J. Walter Wilson	Mailroom renovation	08/15/15	Steven Phillips
J. Walter Wilson	Financial Aid process room	07/15/15	Gary Martins
John Carter Brown Library	Renewal & security upgrades, Phase 1	06/26/15	Thomas Cousineau
John Hay Library	Replace heat exchanger	09/01/15	David Larson
Life Sciences Building	Fire alarm upgrades	07/15/15	Jeffrey Parker
Lloyd Avenue 295	Rework glass shop hood	09/30/15	Courtney McCracken
Machado House	Exterior paint	09/01/15	Gary Martins



Window washing at Wriston



Maxcy Hall Renovation



Infrastructure

SUMMER PROJECTS LIST



Hope College Roofing



Changes to CAPS, JWW



Painting 247 Bowen

Facility Name	Project Title	Complete	Contact
MacMillan Hall	PH neutralization pumping system replacement	08/31/15	Operations
Maddock Alumni Center	Vestibule upgrade	08/14/15	Joanna Saltonstall
Manning Hall	Replace tube bundle heat exchanger HX-10	09/01/15	David Larson
Maxcy Hall	Engineering enabling-Urban Studies relocation	08/07/15	David LaPlante
Miscellaneous	JCI Metasys customization of tab user views	08/31/15	Division 9
Miscellaneous	Andover Continuum & Web Client Software upgrades	08/31/15	Division 9
Multiple	Flipped classroom renovations-CIT 227, List 110, JNBC	06/19/15	Brian O'Connell
Multiple	Distribution upgrades	10/01/15	Courtney McCracken
Multiple	Exterior paint touch-ups	08/28/15	Gary Martins
Multiple	Front Green roof & façade repairs	08/19/15	Michael Kenney
Multiple	Metering installation of ATS & emergency generator run status	08/31/15	Division 3
Multiple	Refrigeration monitoring system upgrades	08/31/15	Operations
Multiple	Fire alarm system panels-battery replacement	08/31/15	Division 3
Nightingale-Brown House	Boiler replacement	09/15/15	David Larson
Olney Margolies Athletic Center	Football coaches' offices renovations	07/01/15	Gary Martins
Partridge Hall & Annex	Improvements for BCSC	08/15/15	Gary Martins
Pizzitola	Admin office renovations-Rooms 226, 227, 228	08/28/15	Gary Martins
Pizzitola	Roof repairs	08/15/15	Michael Guglielmo
Pizzitola	Women's basketball locker room renovations-Room 114	10/01/15	Gary Martins
Power St. 089	Exterior paint	08/28/15	Gary Martins
Prince Engineering Lab	Brown Design Workshop renovations	08/28/15	Thomas Cousineau
Richmond St. 222	Renovations for Primary Health Care Track	08/15/15	Steven Phillips
Rochambeau House	Office renovations	08/15/15	Gary Martins
Rockefeller Library	Fire protection	08/31/15	Joanna Saltonstall
Sharpe Refectory	Creation of semi-private offices-Room 004	07/31/15	Gary Martins
Ship Street 070	Clean steam generator modifications	08/31/15	Division 8
South Main St. 121	Plaza roof restoration	08/01/15	Brian O'Connell
University Hall	Senior administration office renovations	08/01/15	Gary Martins
Utilities/Infrastructure	HTHW replacement-Harkness to Grad Center	09/30/15	Courtney McCracken
Waterman St. 070	Offices for Economics	07/01/15	Gary Martins
Watson CIT	Improvements for CS	08/15/15	David LaPlante
West House	Exterior paint	08/28/15	Gary Martins
Wilbour Hall	Renovations-Rooms 001, 003	08/15/15	Gary Martins
Wilson Hall	Hallway carpet replacement	06/12/15	Brian O'Connell
Wriston Quad	Re-keying	08/31/15	Divisions 1 & 2
Wriston Quad	Renovations, Phase 2	08/12/15	Steven Phillips

YOU ARE INVITED STAFF LECTURE AND COOKOUT

Dear Staff,

Again, we are fortunate to have the opportunity for all Facilities' staff to take advantage of the world-class resources that are here at Brown University, to hear Dr. Glenn Loury lecture on a topic that is currently being covered on a national news level. Dr. Loury, the Merton P. Stoltz Professor of the Social Sciences and Professor of Economics here at Brown, has taught previously at Boston, Harvard and Northwestern Universities, and the University of Michigan and holds a B.A. in Mathematics from Northwestern University and a Ph.D. in Economics from MIT. He is a highly regarded academic economist, a prominent social critic and a public intellectual who writes mainly on the themes of racial inequality and social policy.

For all those interested, I hope you will attend. If not, I look forward to seeing you afterward at the picnic.

Sincerely



Stephen M. Maiorisi, Vice President of Facilities Management

"Race, Incarceration and American Values: Where Do We Go from Here?"

Who: All Facilities Management Staff

When: Friday, August 7, 2015, 10:00 AM

Where: Metcalf Auditorium

What: Guest lecturer Dr. Glenn Loury, the Merton P. Stoltz Professor of the Social Sciences and Professor of Economics



Cookout

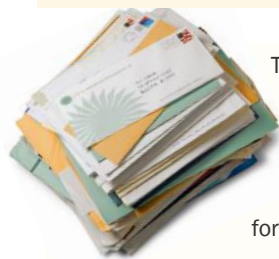
Who: All Facilities Management Staff

When: Friday, August 7, 2015, 12:00 PM

Where: 295 Lloyd Avenue, Berylson Family Field



YOU'VE GOT MAIL



This summer, the mailroom, at J. Walter Wilson (JWW), is being transformed to address the dramatic increase in packages and the equally dramatic reduction in paper mail. In addition, the growing student body has led to a mailbox shortage.

Out go the thousands of small mailboxes to be replaced by a compact shelving system, opening up most of the space for package shelving. No longer will students need to go

check their mailbox every day to see if they received mail; now they will be sent a text letting them know that they have items waiting to be picked up. They can then go to a new multi-station counter, opening to the JWW lobby, to pick up both paper mail and packages.

This project will end the need to provide a temporary package delivery space on campus at the start of the school year (most recently housed in Alumnae Hall in the former Gate). All departments will have their

mail delivered daily, as is already happening at 295 Lloyd.

Lerner Ladds + Bartels (in conjunction with Ricoh) designed the project, which is being built by Bentley Builders.



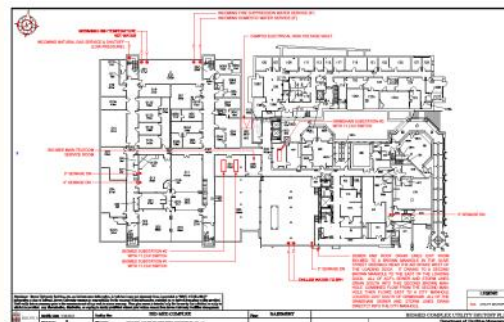
VISUAL AIDS ROLLED OUT THIS SUMMER



HVAC color-coded zone maps, by floor, will make it easier to communicate and plan building shut down work and assist trade staff in correctly diagnosing issues in the buildings.

Visual aids are being finalized for the Bio-Med Complex.

By having one plan with all the building utility shut-offs for the entire Bio-Med complex, it will make it easier for FM Maintenance Operations trades staff to quickly locate shut-offs during emergencies.



AUXILIARY HOUSING JOINS FACILITIES MANAGEMENT

Effective August 1st, the Auxiliary Housing Office at Brown will join Facilities Management, reporting to Assistant Vice President of Real Estate John Luipold.

Director of Auxiliary Housing Gail Medbury will report to John. Gail and her team (Betty Coitoia, Tina Thompson, and Margaret Nardacci) will continue to be located at Vartan Gregorian Quadrangle, 101 Thayer Street, Building A.

The mission of the Auxiliary Housing Office is to provide assistance with housing options, resources, and ser-

vice. The addition of Auxiliary Housing, to the Real Estate Office and to Facilities Management, will create the opportunity

for improved operational efficiency and strategic planning of the University's real estate assets.



Gail, Betty, Tina, and Margaret

welcome to Facilities Management!

vices to undergraduate and graduate students, faculty, visiting scholars and

SAVE THE DATE

- ◆ Lecture and Cookout - Friday August 7th
- ◆ Stewards' Meeting — 1st Wednesday of each month
- ◆ Labor/Management Meetings — 2nd Wednesday of each month

HOLIDAYS

- ◆ August 10—Victory Day
- ◆ September 7—Labor Day
- ◆ October 12—Fall Weekend

COMINGS & GOINGS**Retirements:**

Acacio Plna	Custodian II
Manny Goulart	Custodian II
Louis Piacitelli	Lead Electrician

New hires:

Jeffrey Powers	Applications Engineer
----------------	-----------------------


**REMINDERS**

Have a question about your **uniforms or safety goggles**? Contact Stores Operations at x3-2734.

Continue to submit your Facilities Management [suggestions](#).



Complete 2015 **Wellness Rewards**: For more information go to <http://www.brown.edu/about/administration/human-resources/work-life/wellness-portal>

 **Bear Bargains Discount Program** is a discount program for all members of the Brown community, with a Brown ID card. Check out the list at: <http://www.brown.edu/about/administration/human-resources/employee-resources/employee-programs> (Note scroll toward bottom of screen for up-to-date list.)

Newsletter Team: Donna Butler, Lichen Grever, Tracy Mansour, Leah McCue, Amy Morton, Paula Penelton

Contributors: Jack Wilcox,



This edition of *Facilities News* includes information regarding many of our efforts underway. It has been written to provide all Facilities Management employees with information regarding Department activities across the various offices. If you have any suggestions for articles or would like to contribute to *Facilities News* please contact FM_Newsletter@Brown.edu.