

FOR LEASE

HIGH-PROFILE LOCATION

1,262 SF & 4,970 SF OFFICE SPACE

ONE DAVOL SQUARE

Providence, RI

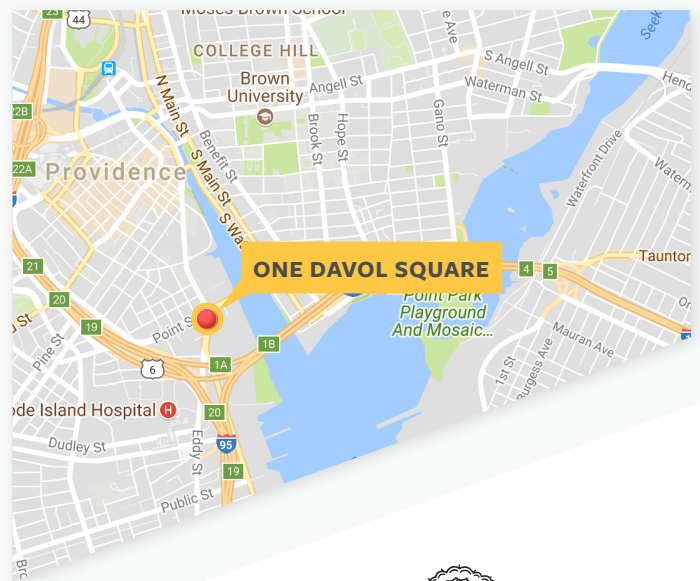
PROPERTY DESCRIPTION

CBRE is pleased to announce the availability of office space for lease at One Davol Square in Providence, Rhode Island. A former mill building that was converted to first class office space, One Davol Square is located in the heart of the Jewelry District (Eddy and Point Streets). The property is in proximity to Brown University Alpert Medical School and both the downtown and the east side of Providence.

- Immediate access to Interstates 95 and 195
- Downtown Transit Connector stop
- Four-story atrium
- Brick & beam mill construction
- On-site professional management
- Excellent tenant mix

LOCATOR MAP

The property is located at a major gateway to the city of Providence with immediate access to Interstates 195 and 95. The South Street Landing project (fully occupied) and River House—a 250-bed housing development—are adjacent to One Davol Square. The recent opening of the +/- \$21 Million pedestrian bridge and further development on the Interstate 195 land linking the Jewelry District and the Financial District put One Davol Square at the center of activity in Providence.



BROWN

HIGH-PROFILE LOCATION
FOR LEASE

1,262 SF & 4,970 SF OFFICE SPACE

ONE DAVOL SQUARE
Providence, RI



BUILDING SPECIFICATIONS & FLOOR PLAN

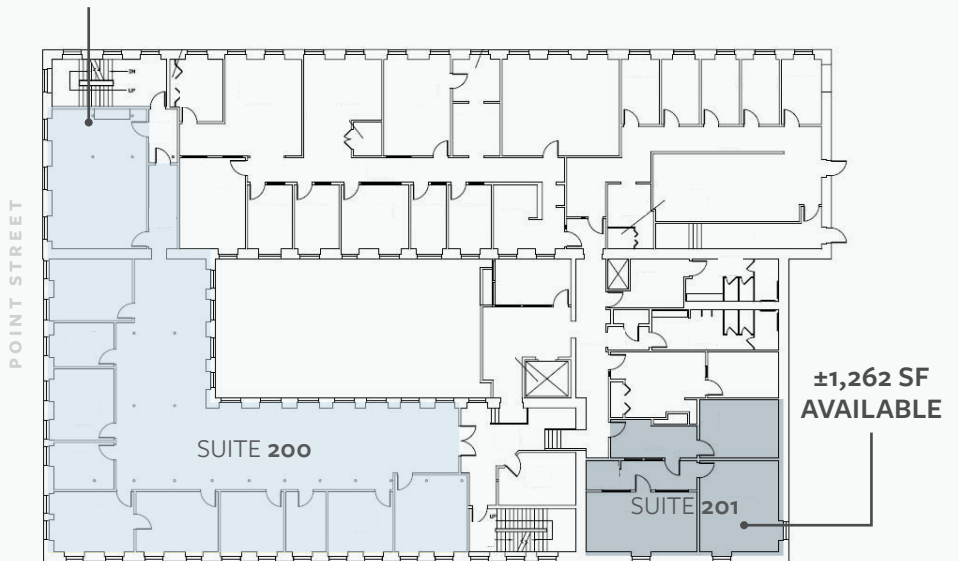
BUILDING SPECIFICATIONS

- Year Built/Renovated: 1895/1981/2008
- Building Size: 34,753 SF
- Stories: Four
- Sprinkler: Fully sprinklered

AVAILABLE

- Second Floor:
 - Suite 200 - 4,970 SF
 - Suite 201 - 1,262 SF
 - \$20.00 SF net of electric and janitorial

±4,970 SF AVAILABLE



© 2020 CBRE, Inc. All rights reserved. This information has been obtained from sources believed reliable, but has not been verified for accuracy or completeness. You should conduct a careful, independent investigation of the property and verify all information. Any reliance on this information is solely at your own risk.

CBRE and the CBRE logo are service marks of CBRE, Inc. All other marks displayed on this document are the property of their respective owners.

CONTACT US
www.cbre.us/providence

ANDREW GALVIN
First Vice President
+1 401 330 1915
andrew.galvin@cbre.com

PATRICK JOYCE
Vice President
+1 401 621 4334
patrick.joyce@cbre.com

