



FOR LEASE

**HIGH-PROFILE
LOCATION**

1,262, 2,948 & 4,970 SF
OFFICE SPACE

ONE DAVOL SQUARE

Providence, RI

PROPERTY DESCRIPTION

CBRE is pleased to announce the availability of office space for lease at One Davol Square in Providence, Rhode Island. A former mill building that was converted to first class office space, One Davol Square is located in the heart of the Jewelry District (Eddy and Point Streets). The property is in proximity to Brown University Alpert Medical School and both the downtown and the east side of Providence.

- Immediate access to Interstates 95 and 195
- Downtown Transit Connector stop
- Four-story atrium
- Brick & beam mill construction
- On-site professional management
- Excellent tenant mix



BROWN

HIGH-PROFILE LOCATION FOR LEASE

● HEALTHCARE

● JOHNSON & WALES UNIVERSITY

● RISD

● BROWN UNIVERSITY

● NEW DEVELOPMENT

1 Riverhouse Apartments (±\$62 Million)

2 South Street Landing (±\$230 Million)

3 Chestnut Commons (±\$33 Million)

4 Garrahy Garage (±\$43 Million)

5 Point225 (±\$90 Million)

6 Aloft Hotel (2021 Completion ±\$56 Million)

7 Parcel 28 - Proposed 250 unit; 20,000 SF retail

8 Parcel 6 - 62 residential units; 13,000 SF grocery store

● DTC DOWNTOWN TRANSIT CONNECTOR

Pick up at each location between train station and hospitals, every five minutes or less.



DISTANCE TO:

- WARREN ALPERT MEDICAL SCHOOL OF BROWN UNIVERSITY
±1 minutes
- RHODE ISLAND COLLEGE SCHOOL OF NURSING
±2 minutes
- JWU SCHOOL OF ENGINEERING
±2 minutes
- URI COLLEGE OF NURSING
±2 minutes
- RHODE ISLAND HOSPITAL, HASBRO CHILDREN'S HOSPITAL, WOMEN & INFANTS HOSPITAL
±0.7 miles
- BROWN SCHOOL OF ENGINEERING
±0.9 miles

1,262, 2,948 & 4,970 SF OFFICE SPACE

ONE DAVOL SQUARE

Providence, RI



RHODE ISLAND
CONVENTION CENTER

PROVIDENCE
PLACE MALL

RHODE ISLAND
TRAIN STATION

KENNEDY
PLAZA

PARK

COLLEGE
HILL

PEDESIAN
BRIDGE

BROWN UNIVERSITY

4

5

6

8

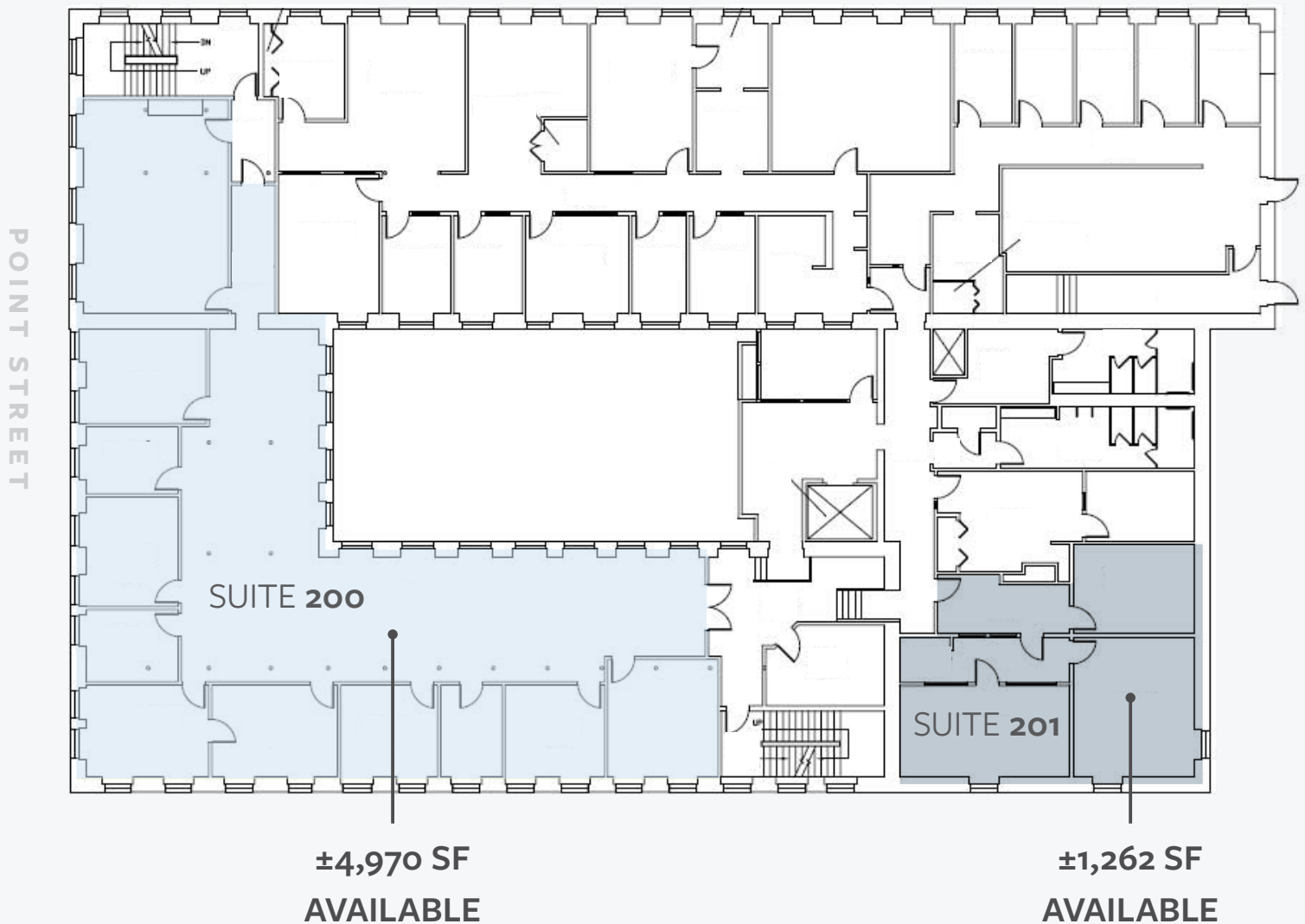
HIGH-PROFILE LOCATION FOR LEASE

BUILDING SPECIFICATIONS

- Year Built/Renovated: 1895/1981/2008
- Building Size: 34,753 SF
- Stories: Four
- Sprinkler: Fully sprinklered

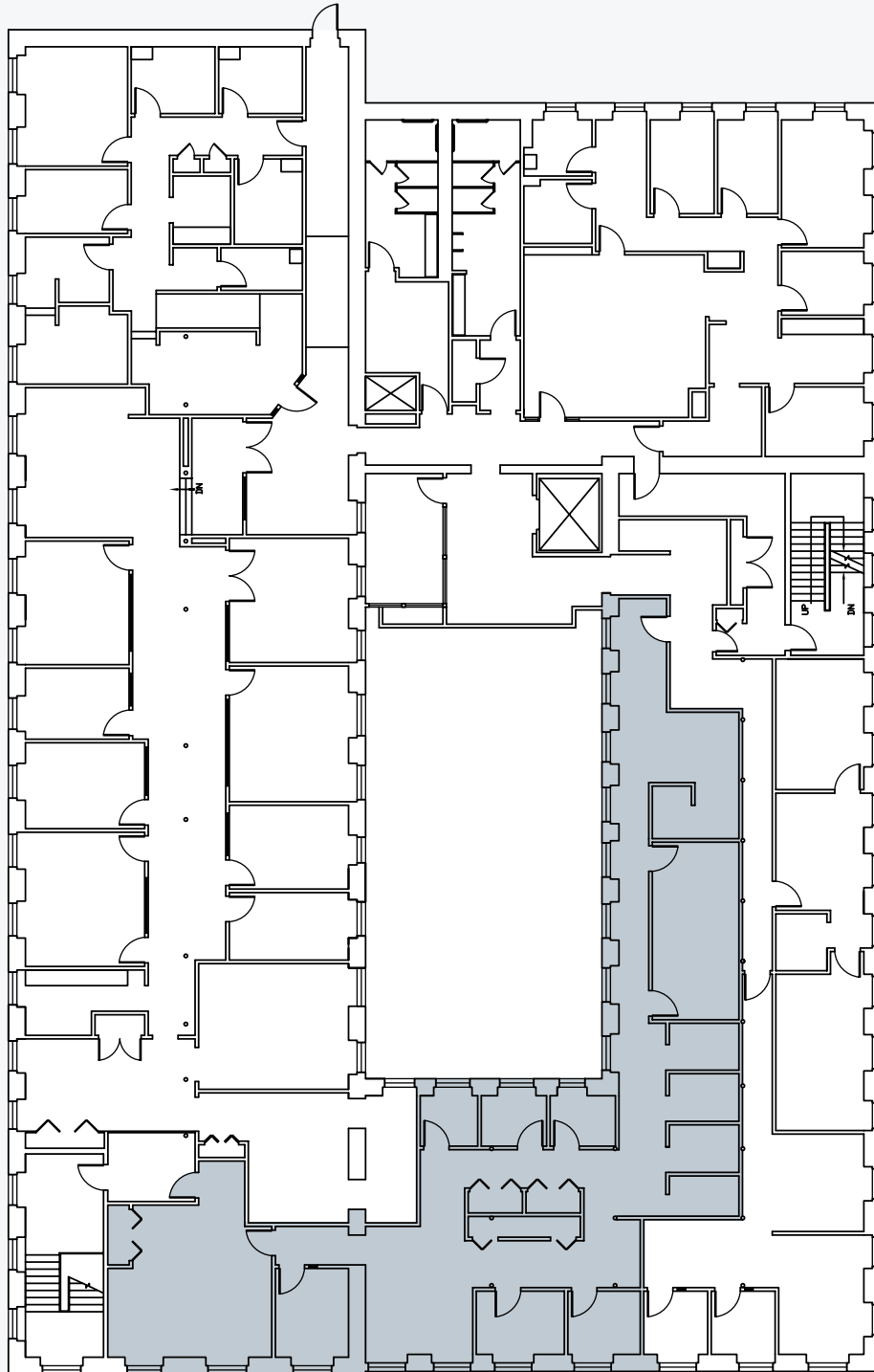
SECOND FLOOR PLAN

- \$20.00 SF net of electric and janitorial



THIRD FLOOR PLAN

SUITE 300: 2,948 SF AVAILABLE

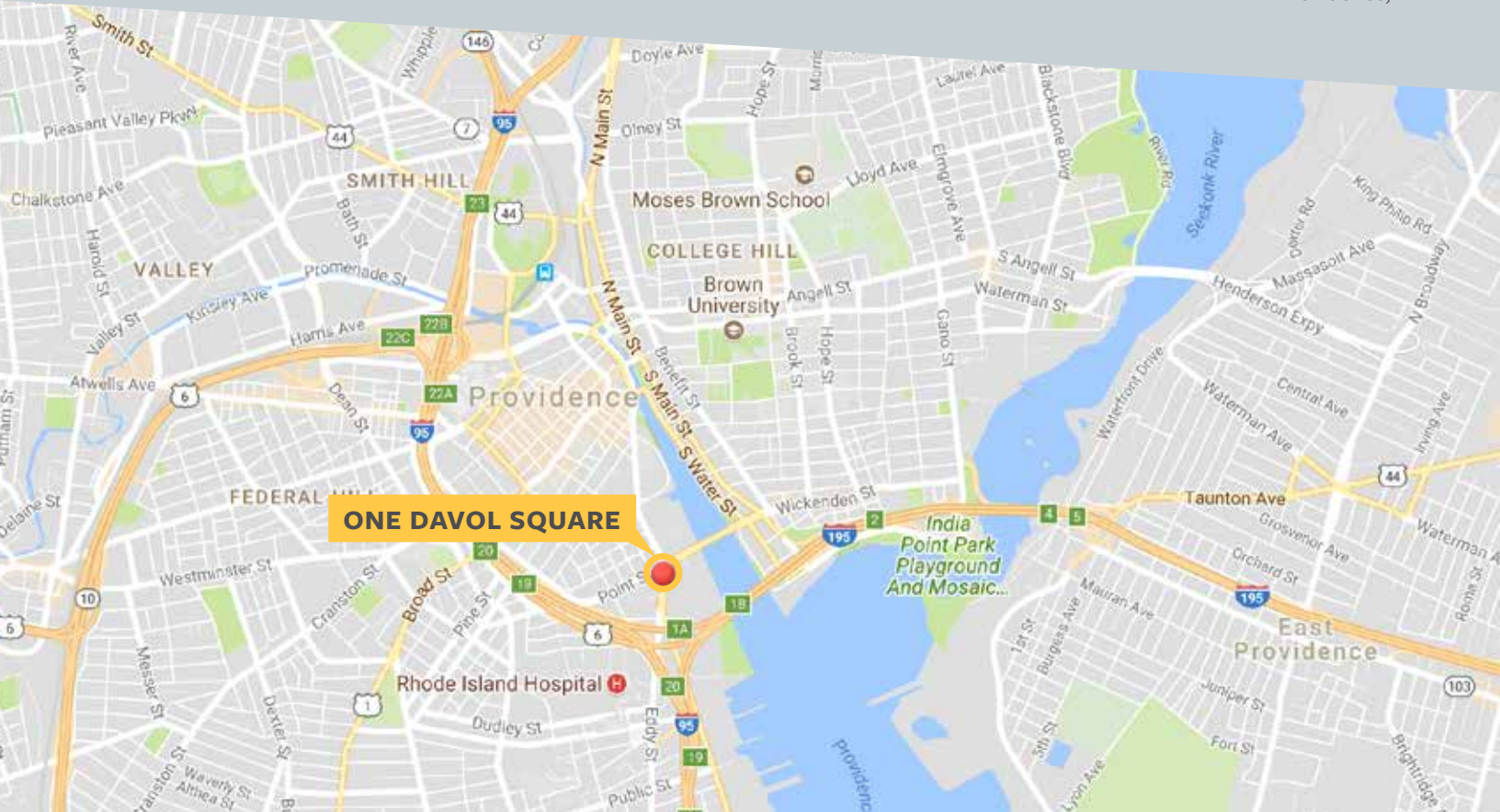


POINT STREET

HIGH-PROFILE LOCATION
FOR LEASE

1,262, 2,948 & 4,970 SF OFFICE SPACE

ONE DAVOL SQUARE
Providence, RI



LOCATOR MAP

The property is located at a major gateway to the city of Providence with immediate access to Interstates 195 and 95. The South Street Landing project (fully occupied) and River House—a 250-bed housing development—are adjacent to One Davol Square. The recent opening of the ±\$21 million pedestrian bridge and further development on the Interstate 195 land linking the Jewelry District and the Financial District put One Davol Square at the center of activity in Providence.

CBRE

© 2020 CBRE, Inc. All rights reserved. This information has been obtained from sources believed reliable, but has not been verified for accuracy or completeness. You should conduct a careful, independent investigation of the property and verify all information. Any reliance on this information is solely at your own risk.

CBRE and the CBRE logo are service marks of CBRE, Inc. All other marks displayed on this document are the property of their respective owners.

CONTACT US
www.cbre.us/providence

ANDREW GALVIN
First Vice President
+1 401 330 1915
andrew.galvin@cbre.com

