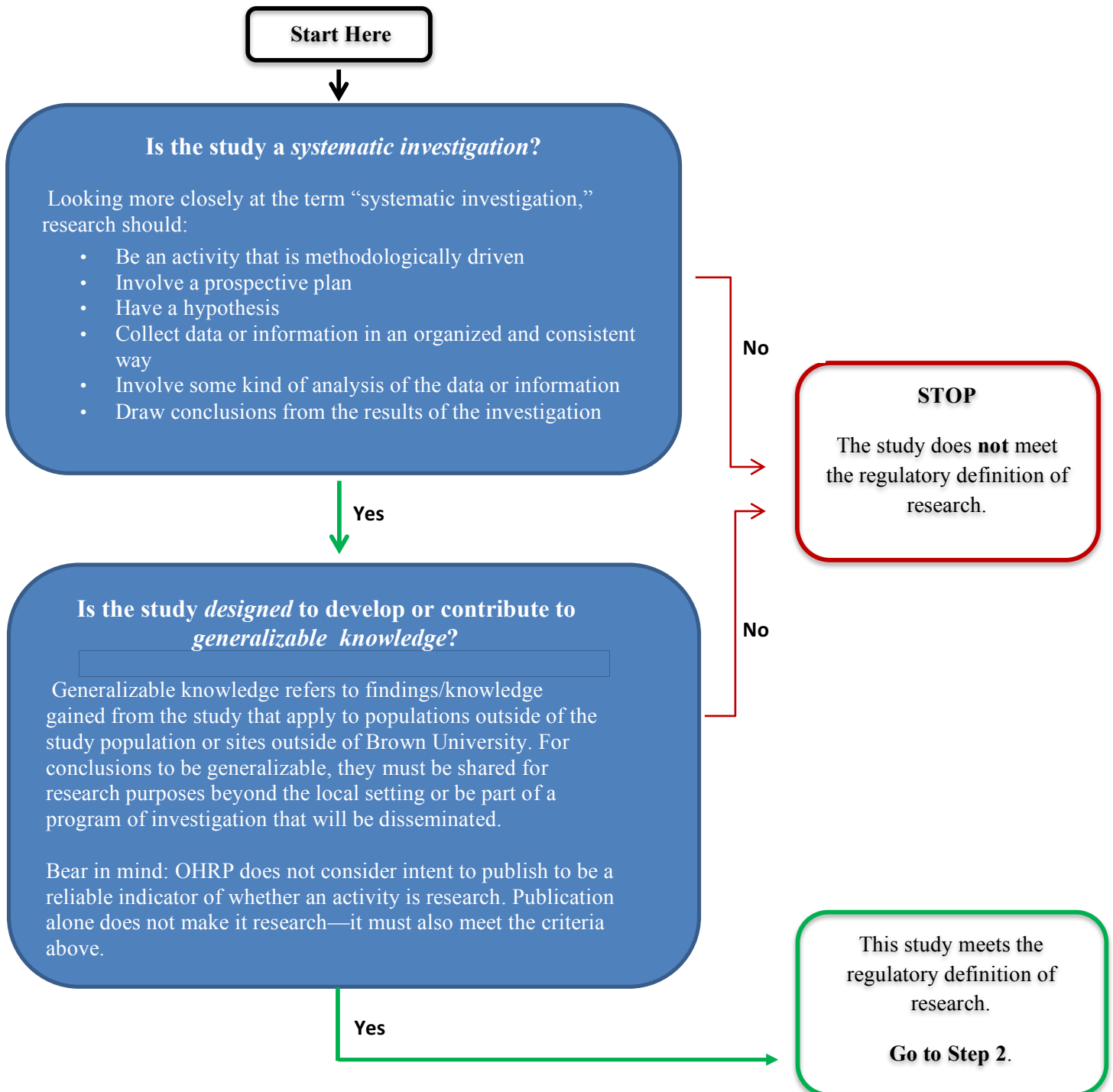




All university projects involving both “RESEARCH” and “HUMAN SUBJECTS” must be submitted to the Brown University IRB for review and approval or exemption determination before starting any human subjects-related study procedures, including recruitment, consenting, data collection, and analysis. For guidance in determining whether your study meets both of these definitions, please follow the charts below.

Step 1: Is your project RESEARCH?



Step 2: Does your research involve HUMAN SUBJECTS?

