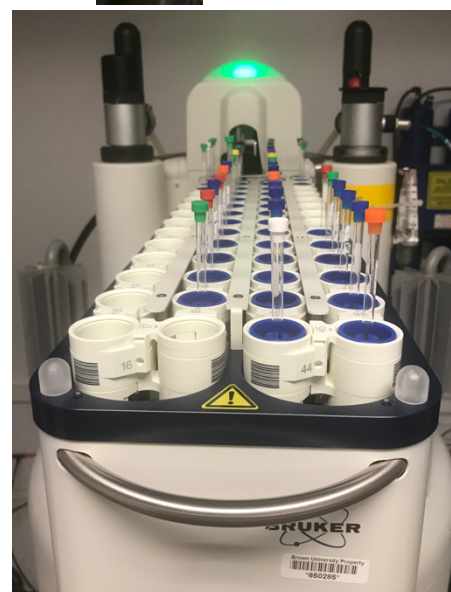
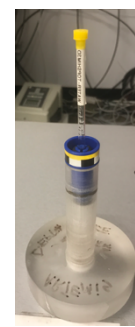


Quick Guide to Changes on Artemis for Running Routine NMR Experiment

1. Place your sample in a blue spinner and use the depth gauge to push your sample down to the correct height.
2. Take your sample to the carousel mounted on top of Artemis. Be careful with your balance on the steps. Place your sample in the carousel and make note of the slot number you placed it in.
3. Log in as you normally would to the workstation (NOTE – the scrolling mechanism makes it difficult to select your name from the list so click the ‘not listed’ link at the bottom of the screen and then just type in your username/password in the boxes that pop up).
4. Once in Topspin, type sx 45 (assuming you put the sample in holder number 45). The autosampler will eject the sample in the magnet and rotate the carousel and insert your sample.
5. Everything else is the same as far as running your samples.
6. When you have finished your experiments, type sx 1 to return the reference to the magnet and collect your sample from the carousel.
7. Wipe down the workstation keyboard and mouse with the peroxiwipe or other cleaner after logging out of the workstation.
8. NOTE: No one is permitted to sit at the processing stations in GC410. All of your NMR data must be processed on your own device or your lab computer. If you have not done so already, please register with Bruker [here](#) to gain free access to the Topspin processing software. Download TS 3.6.2. If you download TS 4 you will notice that it looks very different from the Topspin acquisition software. Alternatively, you may download [MNova software](#) from the web and then send me an email requesting access to our floating license and I will send it to you.
9. If you have multiple samples to run and would prefer to run them remotely, just make note of the holder number/identity of each sample and put the little red flag up on the side of Artemis’ monitor to notify folks it is being run remotely. You will need to download [TeamViewer](#) (free for individual use). When you launch TeamViewer click on ‘Remote Control’ and add Artemis’ ID 1 704 973 262 in the ‘Partner ID’ box and click ‘connect’. The password is the same as your login password to the workstation.



10. Once connected you should see the login screen of Artemis. Log in and proceed as you would if you were sitting right there. Be sure to exit and log out of Artemis as you would if you were sitting right there. If you just close the TeamViewer box on your local PC, you will still be logged in on Artemis.